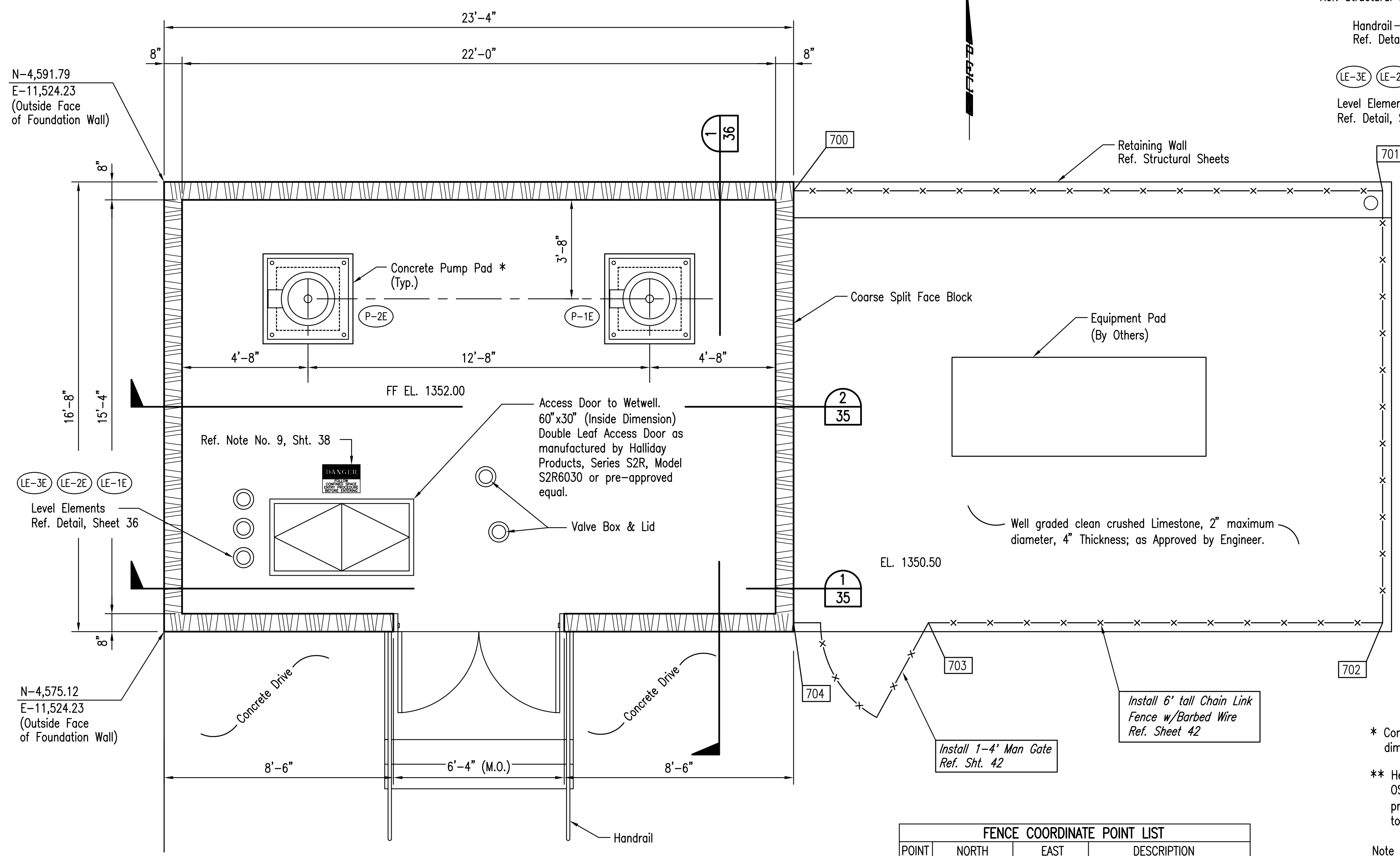


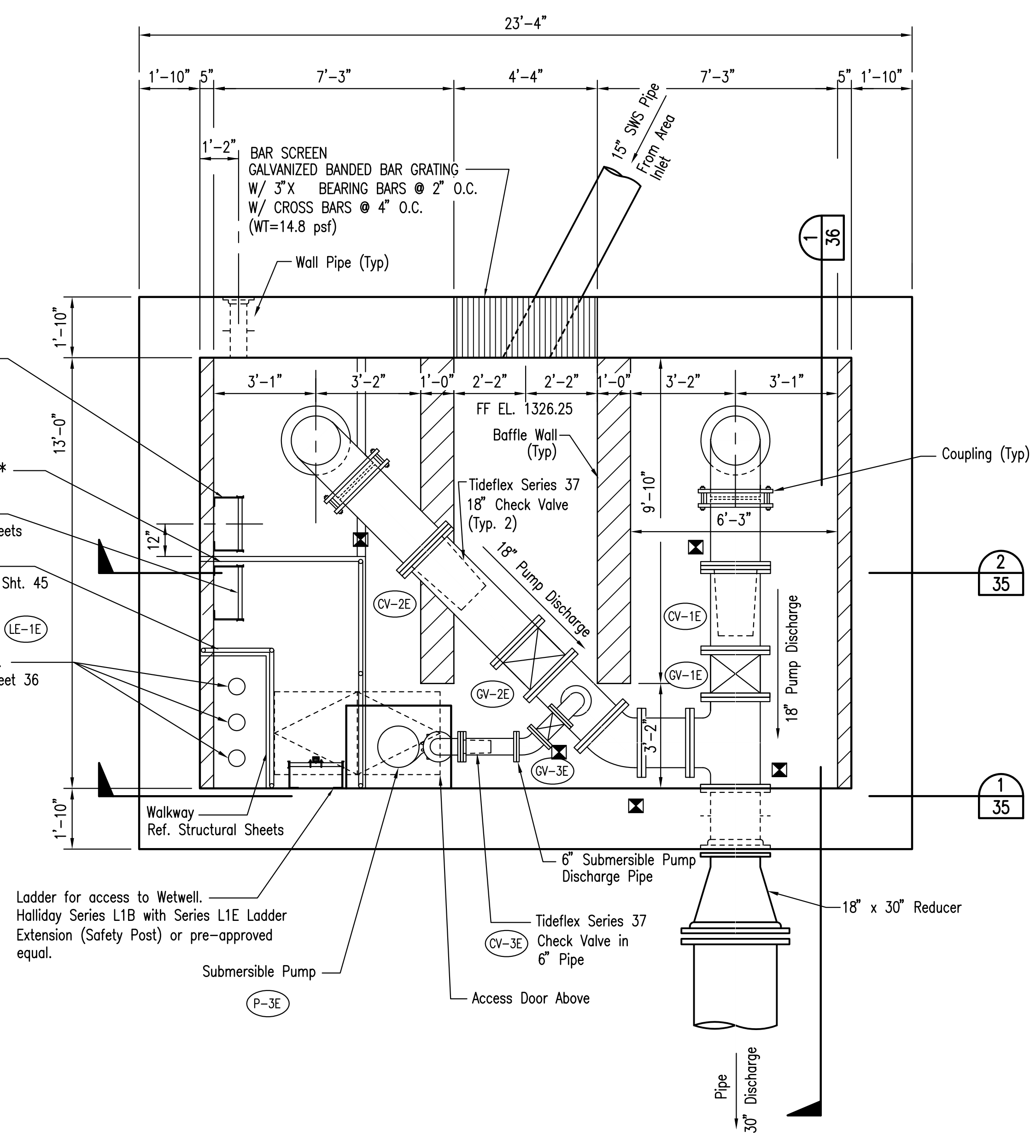
Sheet 08-29-2009 11:51:28 AM by CAE
 Plot Scale 1/2" = 1'-0"
 C:\2004\04274\041\WEST\RE-BD\04274-004-C-34-East-PumpStationPlan



EAST PUMP STATION MAIN LEVEL PLAN
 SCALE: 3/8" = 1'-0"
 0 1 2 3 4

POINT	NORTH	EAST	DESCRIPTION
700	4,591.4558	11,547.5677	Fence PI at Pump Station
701	4,591.4558	11,569.4044	Fence PI
702	4,575.4491	11,569.4044	Fence PI
703	4,575.4491	11,552.5677	Man Gate
704	4,575.4491	11,547.5677	Fence PI at Pump Station

700 = FENCE COORDINATE LOCATION



EAST PUMP STATION LOWER LEVEL PLAN
 SCALE: 3/8" = 1'-0"
 0 1 2 3 4

■ Indicates piping or equipment needs to be adequately supported. Supports such as Wall Brackets, Clevis Hangers and Steel or Concrete supports shall be positioned to adequately support the pipe. The Contractor shall also install any additional pipe supports deemed necessary. The Contractor shall submit to the Engineer for approval the type of pipe support and proposed location(s) for installation.

* Contractor shall coordinate Concrete Pad dimensions with Equipment Manufacturer.
 ** Heavy Duty Aluminum Alloy Chain, Installed per OSHA Requirements. Contractor to provide Hooks/Bolts for Connecting Chain to Handrail.
 Note to Contractor:
 Paint or Tape Safety Yellow Pavement Marking
 Tape 4" wide around Access Door opening.

No.	Revision	By	Date
PHASE II - STORM WATER DRAIN #332 EAST PUMP STATION PLAN VIEWS JAMES L. ARMOUR, P.E. - CITY ENGINEER CITY OF WICHITA PROJECT NO. 468-84396 Professional Engineering Consultants, P.A. 303 S. TOPKA • WICHITA, KANSAS 67202 316-262-2691 • FAX 316-262-3003			
Designed by	EJ, SCU	Job No.	35-04274-042
Drawn by	CAE	Date	SEPTEMBER 2009
			Sht. 34 of 63