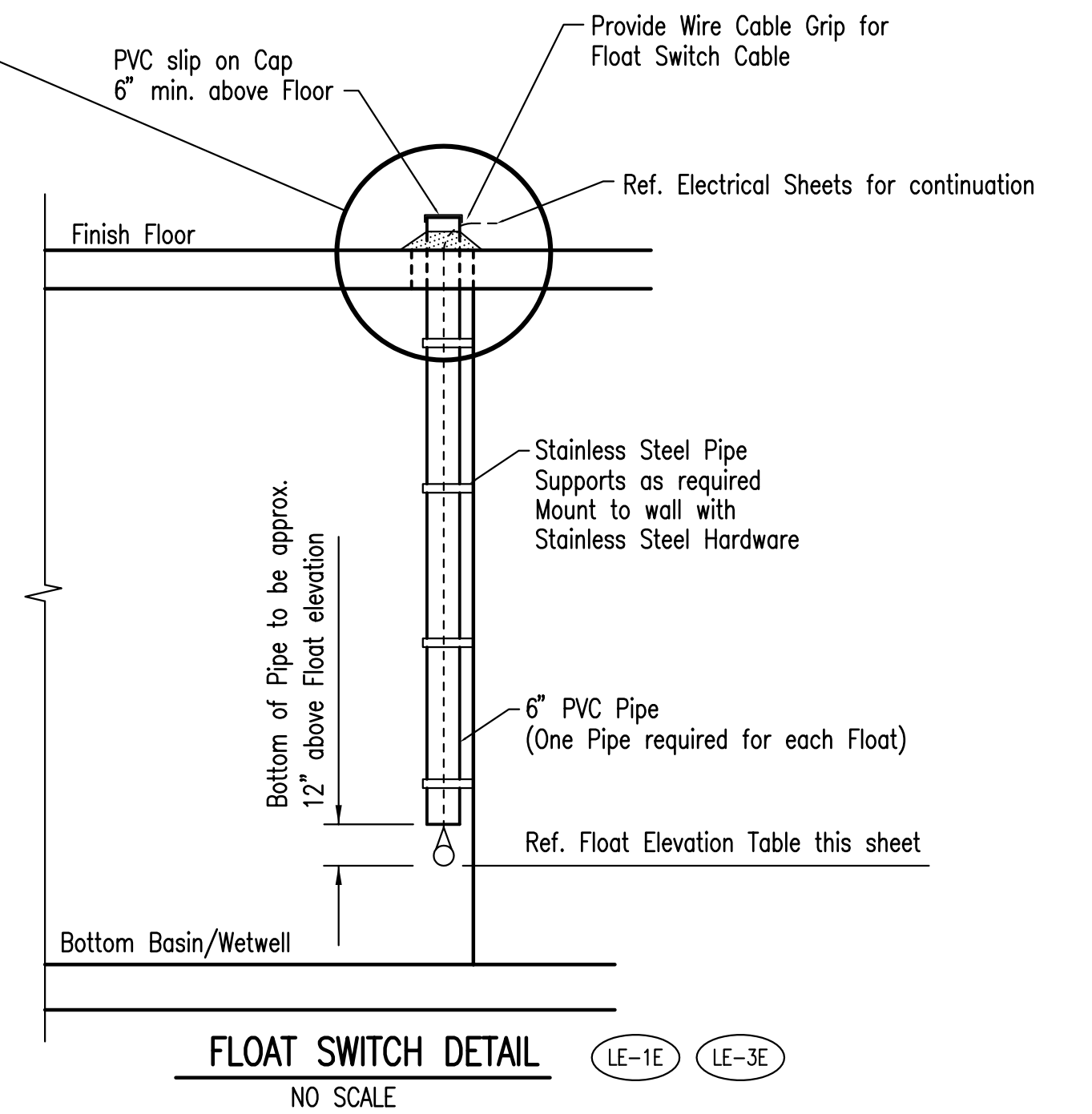
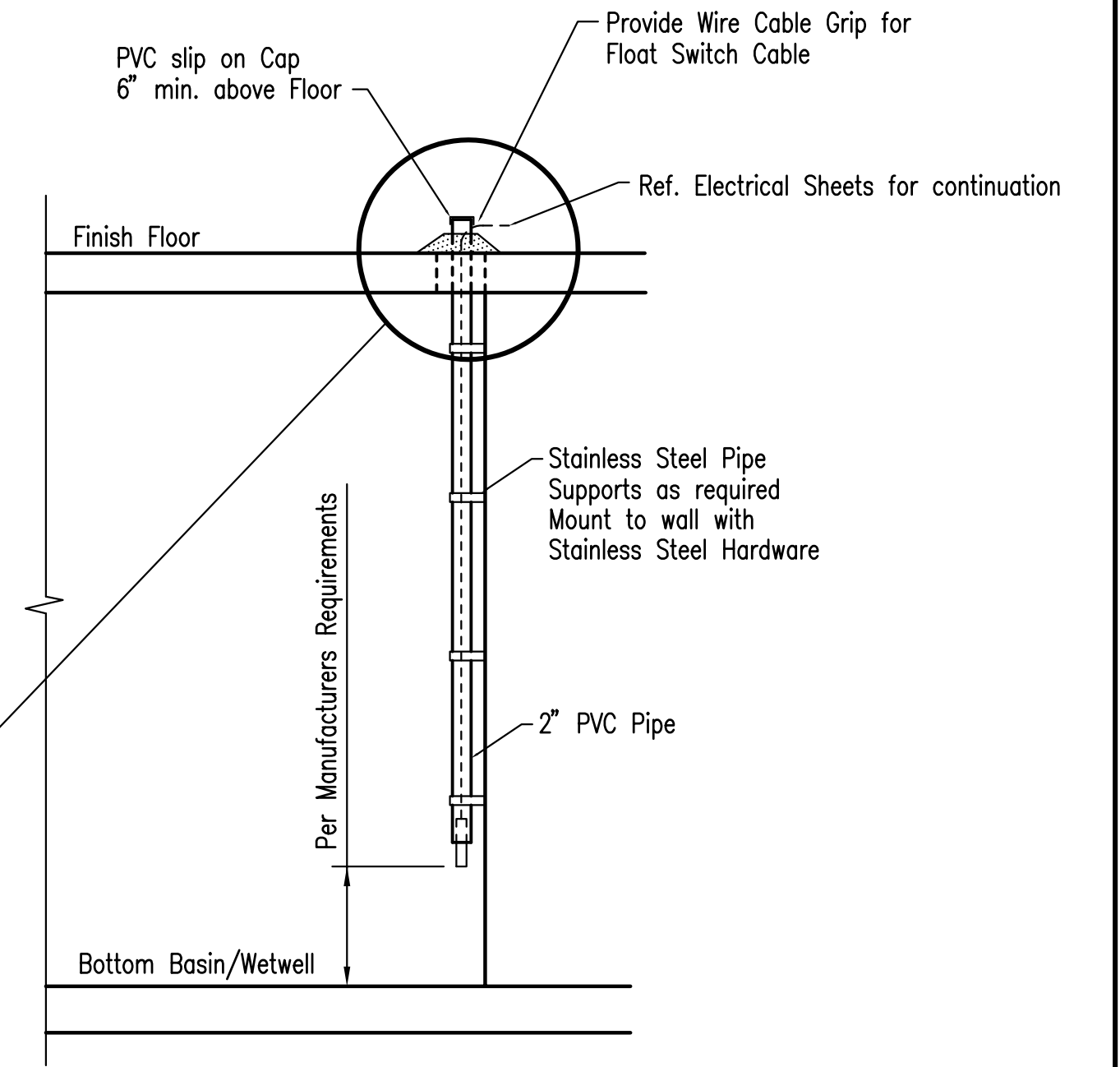
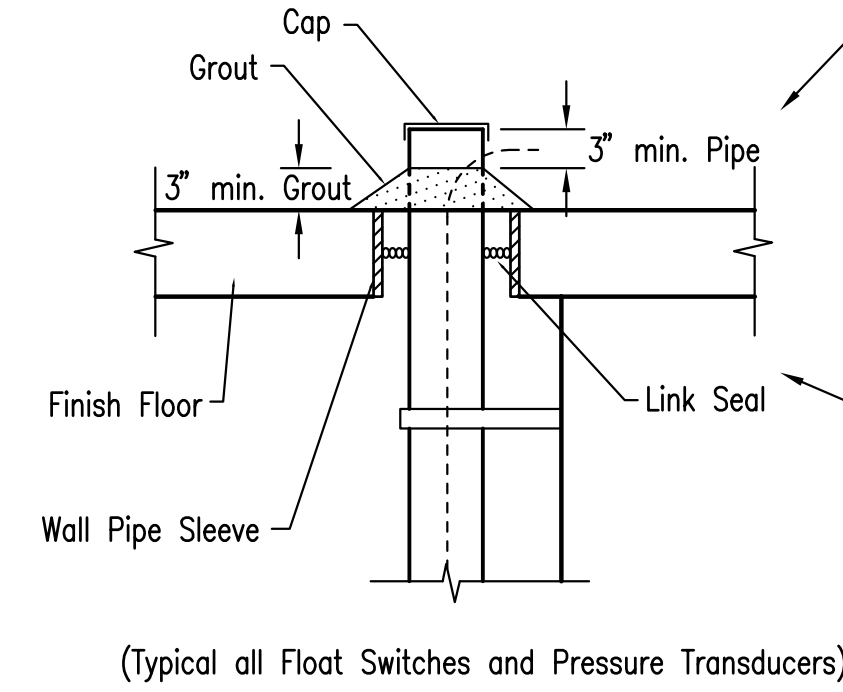
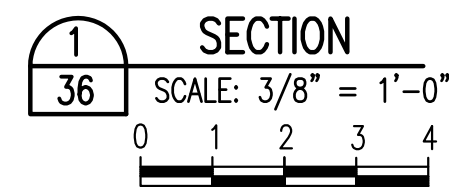


NOTE:

1. TRANSDUCER INITIATES PUMP 1 START AT WETWELL ELEVATION 1332.62.
2. TRANSDUCER INITIATES PUMP 2 START AT WETWELL ELEVATION 1334.37.
3. PUMPS CONTINUE TO OPERATE UNTIL SIGNALLED OFF BY PRESSURE TRANSDUCER EITHER BY WETWELL CONTINUING TO RISE AND REACHING ELEVATION 1346.50 OR BY WETWELL FALLING AND REACHING ELEVATION 1330.87.
4. IF PUMPS SHUT OFF DUE TO REACHING WETWELL ELEVATION 1346.50, PUMPS REMAIN OFF AND FLOW DISCHARGES THROUGH THE GRAVITY MAINS UNTIL WETWELL ELEVATION FALLS TO 1345.50, WHEN PRESSURE TRANSDUCER INITIATES PUMPS 1 AND 2 TO START.
5. PRESSURE TRANSDUCER SIGNALS PUMPS 1 AND 2 OFF AT WETWELL ELEVATION 1330.87.
6. PUMP LOW LEVEL ALARM FLOAT SWITCH AT WETWELL ELEVATION 1330.25; PRODUCES ALARM AND SHUTS OFF PUMPS IF STILL RUNNING.
7. PUMP HIGH LEVEL ALARM FLOAT SWITCH AT WETWELL ELEVATION 1343.87.



* Contractor shall coordinate Concrete Pad dimensions with Equipment Manufacturer.



☒ Indicates piping or equipment needs to be adequately supported. Supports such as Wall Brackets, Clevis Hangers and Steel or Concrete supports shall be positioned to adequately support the pipe. The Contractor shall also install any additional pipe supports deemed necessary. The Contractor shall submit to the Engineer for approval the type of pipe support and proposed location(s) for installation.

Saved: 09-29-2009 11:30:38 AM by CAE
 Plot Scale: 1/267
 09-29-2009 15:02:29 PM
 CA_2009_04274_004.WESTY.RE-BID_04274-04-C-36-East-Pump-StationSection2

No.	Revision	By	Date
PHASE II - STORM WATER DRAIN #332 EAST PUMP STATION SECTION JAMES L. ARMOUR, P.E. - CITY ENGINEER CITY OF WICHITA PROJECT NO. 468-84396 Professional Engineering Consultants, P.A. 303 S. TOPEKA • WICHITA, KANSAS 67202 316-262-2691 • FAX 316-262-3003			
Designed by	EJJ, SCU	Job No.	35-04274-042
Drawn by	CAE	Date	SEPTEMBER 2009
			Sht. 36 of 63