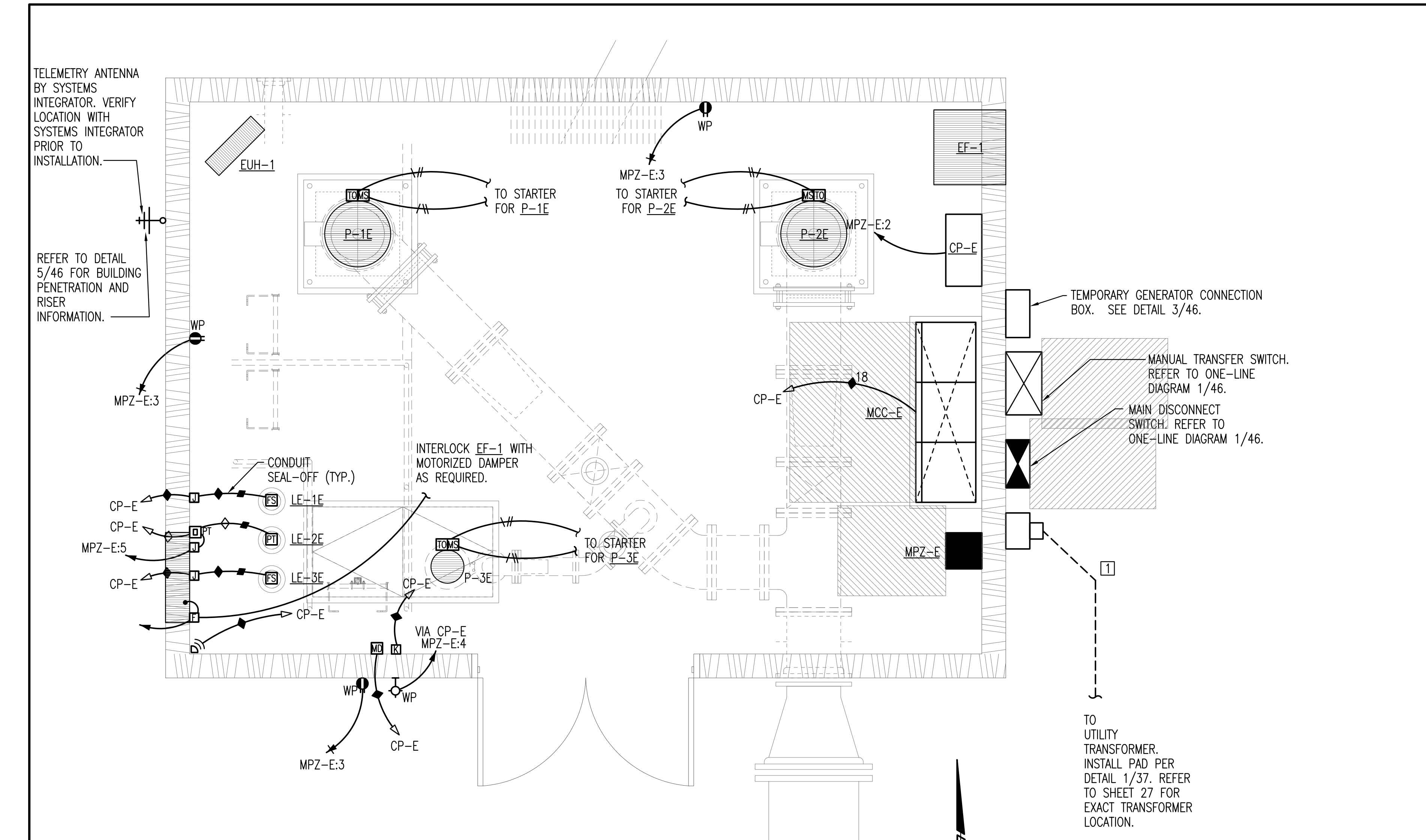
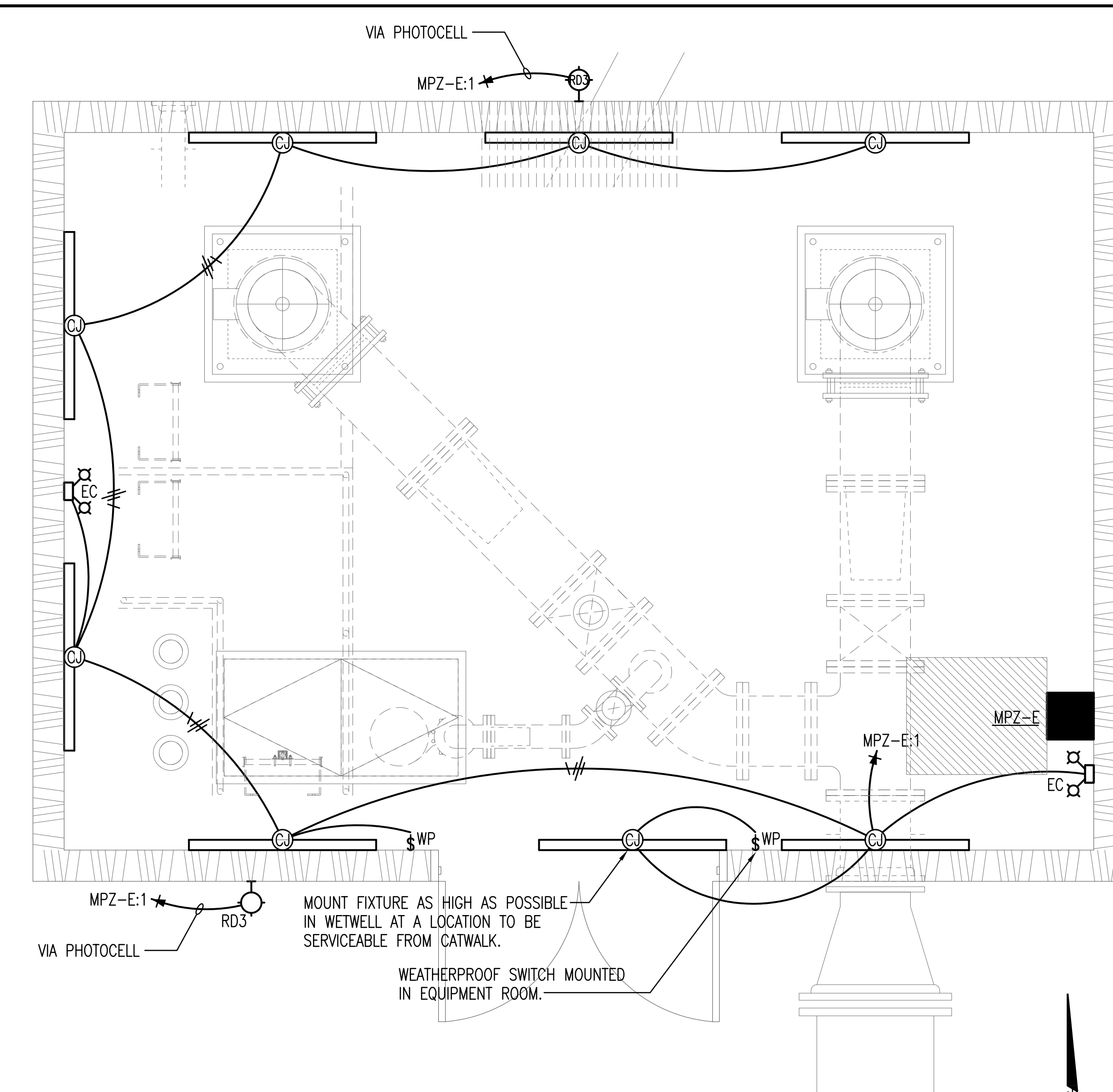


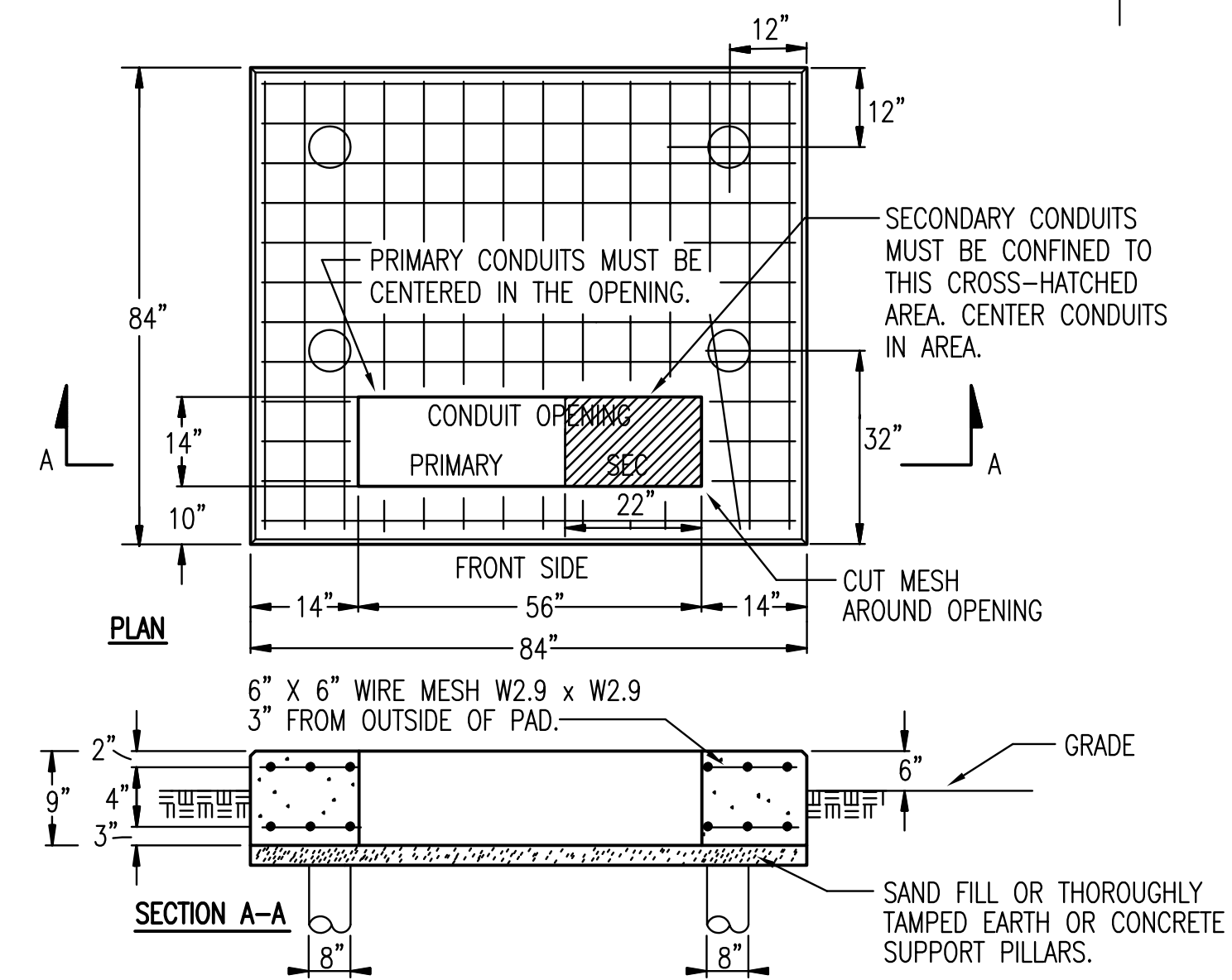
Saved: 09-25-2009 10:29:12 AM by NSM
 Plot Scale: 1/24 09-29-2009 1:26:51 PM
 \\Fs_Local_1s\local_data\Drawings\DWG\2004\04274\04274-004 - 55 - EAST - ELECTRICAL PLANS AND DETAILS



A ELECTRICAL POWER PLAN
1/2" = 1'-0"



B ELECTRICAL LIGHTING PLAN
1/2" = 1'-0"



1 TRANSFORMER PAD DETAIL
NO SCALE

NOTES:

1. VERIFY PAD LOCATION, DIMENSIONS & ALL REQUIREMENTS WITH LOCAL UTILITY CO.
2. THE TOP OF THE TRANSFORMER PAD SHALL RECEIVE A SMOOTH TROWEL FINISH. THE CORNERS AND EDGES SHALL BE ROUNDED OR BEVELLED.
3. THE CONCRETE SHALL BE A MINIMUM OF 3,000 LB. MIX.
4. CONTRACTOR SHALL EXTEND FORMS DOWN TO AT LEAST 3" BELOW AVERAGE GROUND LINE.
5. TOP OF CONDUITS SHALL BE FLUSH WITH TOP OF PAD.
6. THE CONDUIT OPENING SHALL BE FREE AND CLEAR OF CONCRETE.
7. PILLARS ARE FORMED BY AUGERING AN 8" DIAMETER HOLE TO A DEPTH OF UNDISTURBED EARTH. A SEPARATOR, SUCH AS TAR PAPER, SHOULD BE PLACED BETWEEN THE PILLAR AND THE PAD SO THE PAD CAN BE LEVELLED AT A LATER TIME IF NECESSARY.

1	ADDENDUM #2	NSM	8/11/09
No.	Revision	By	Date
PHASE II - STORM WATER DRAIN #332 ELECTRICAL PLANS AND DETAILS EAST PUMP STATION JAMES L. ARMOUR, P.E. - CITY ENGINEER CITY OF WICHITA PROJECT NO. 468-84396 Professional Engineering Consultants, P.A. 303 S. TOPEKA • WICHITA, KANSAS 67202 316-262-2691 • FAX 316-262-3003			
Designed by	RDB	Job No.	35-04274-042
Drawn by	NSM	Date	SEPTEMBER 2009
			Sht. 55 of 63