

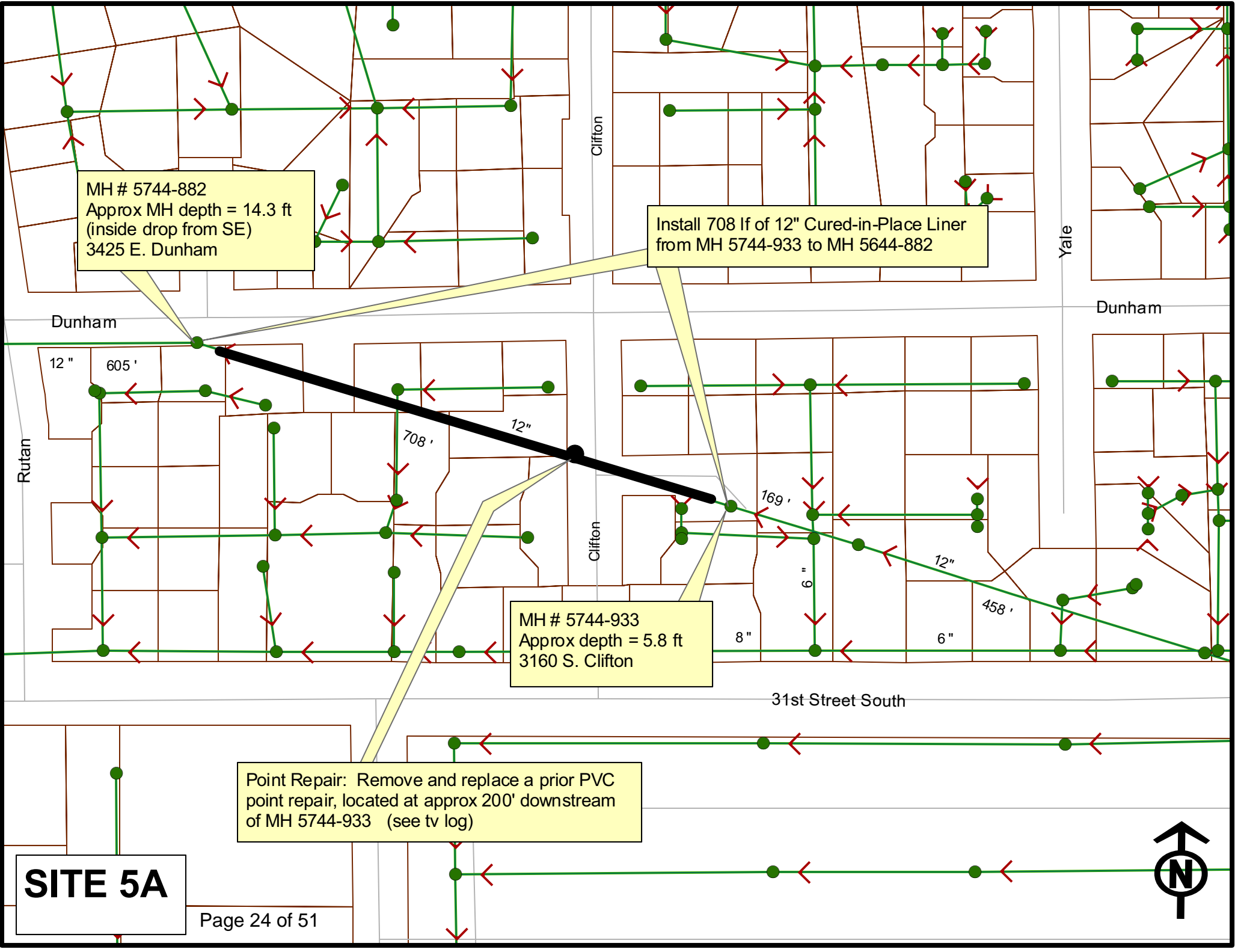
MH # 5744-882
Approx MH depth = 14.3 ft
(inside drop from SE)
3425 E. Dunham

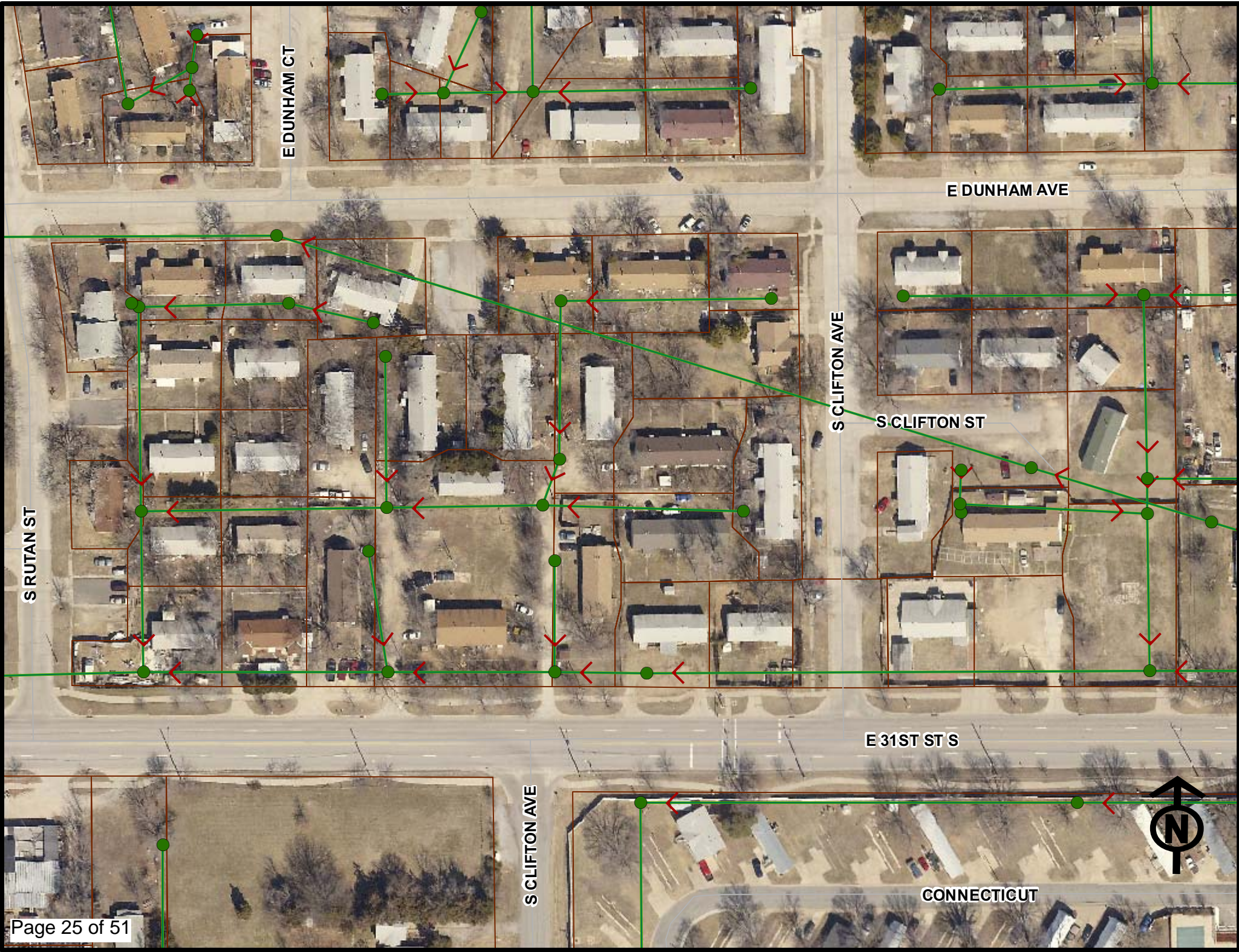
Install 708 lf of 12" Cured-in-Place Liner
from MH 5744-933 to MH 5644-882

MH # 5744-933
Approx depth = 5.8 ft
3160 S. Clifton

Point Repair: Remove and replace a prior PVC
point repair, located at approx 200' downstream
of MH 5744-933 (see tv log)

SITE 5A





E DUNHAM CT

E DUNHAM AVE

S CLIFTON AVE

S CLIFTON ST

S RUTAN ST

E 31ST ST S

S CLIFTON AVE

CONNECTICUT



Television Inspection Master Report

6/14/2010

3:37 PM

US Structure: 5744-933
DS Structure: 5744-882

3160 S. Clifton
3425 E DUNHAM AVE

Date Insp: 4/28/2010
Dir Televised: Upstream To Downstream

Basin: C01A

Pipe Information

Project No. : J-137 Dia: 12 Material: VCP Length: 708.0 Slope: 0.220 Tape ID: DVD #0573

Obs. #	VTR Counter	Distance	Location	Description	Rating	Obsrvd (gpm)	Ratings			Remain (gpm)
							Est. (gpm)	Struct	Clean	
1		0.0		5744-933 / US Manhole /	3160 SOUTH CLIFTON					
2		85.0		Crack-Horizontal	3	0.004	5	0	0.004	
3		93.6		Crack-Horizontal	3	0.004	5	0	0.004	
4		97.7		Crack-Horizontal	3	0.004	5	0	0.004	
5		198.7		Mat. Chngs to PVC	4	0.000	0	0	0.000	
6		198.7	Vertical slip at joint	Offset	4	0.030	60	0	0.030	
7		202.6		Mat. Chngs to VCP	2	0.000	0	0	0.000	
Needs excavated to fix the vertical elevation change at the repair point, prior to CIPP installation.										
8		278.6		Crack-Horizontal	3	0.004	5	0	0.004	
9		281.2		Crack-Horizontal	3	0.004	5	0	0.004	
10		284.3		Crack-Horizontal	3	0.004	5	0	0.004	
11		308.5		Crack-Horizontal	3	0.004	5	0	0.004	
12		311.9		Crack-Horizontal	3	0.004	5	0	0.004	
13		315.1		Crack-Horizontal	3	0.004	5	0	0.004	
14		318.4		Roots	3	0.008	5	8	0.008	
15		318.7		Crack-Horizontal	2	0.002	2	0	0.002	
16		321.8		Crack-Horizontal	3	0.004	5	0	0.004	
17		324.5		Roots	3	0.008	5	8	0.008	
18		324.5		Crack-Horizontal	3	0.004	5	0	0.004	
19		328.0		Roots	3	0.008	5	8	0.008	
20		328.4		Crack-Horizontal	3	0.004	5	0	0.004	
21		330.4		Crack-Horizontal	3	0.004	5	0	0.004	
22		334.2		Roots	3	0.008	5	8	0.008	
23		334.2		Crack-Horizontal	3	0.004	5	0	0.004	
24		343.3		Roots	3	0.008	5	8	0.008	
25		346.2		Roots	3	0.008	5	8	0.008	
26		349.8		Roots	3	0.008	5	8	0.008	
27		349.8		Crack-Horizontal	3	0.004	5	0	0.004	
28		351.9		Crack-Horizontal	3	0.004	5	0	0.004	
29		355.4		Crack-Horizontal	3	0.004	5	0	0.004	
30		358.2		Roots	3	0.008	5	8	0.008	
31		358.6		Broken Pipe	3	0.010	60	0	0.010	
32		361.7		Roots	3	0.008	5	8	0.008	
33		362.3		Broken Pipe	3	0.010	60	0	0.010	
34		364.4		Roots	3	0.008	5	8	0.008	
35		364.4		Crack-Horizontal	3	0.004	5	0	0.004	
36		367.2		Crack-Horizontal	3	0.004	5	0	0.004	
37		383.0		Roots	3	0.008	5	8	0.008	
38		385.9	Extremely heavy roots in this general area	Roots	4	0.010	10	25	0.010	
39		388.8		Roots	5	0.030	18	100	0.030	
40		391.5		Roots	4	0.010	10	25	0.010	

Television Inspection Master Report

6/14/2010

3:37 PM

US Structure: 5744-933

DS Structure: 5744-882

3425 E DUNHAM AVE

Date Insp: 4/28/2010

Basin: C01A

Dir Televised: Upstream To Downstream

41	393.6	Roots	3	0.008	5	8	0.008	
42	395.5	Crack-Horizontal	3	0.004	5	0	0.004	
43	399.5	Roots	4	0.010	10	25	0.010	
44	402.1	Roots	4	0.010	10	25	0.010	
45	405.6	Roots	4	0.010	10	25	0.010	
46	405.7	Crack-Horizontal	3	0.004	5	0	0.004	
47	411.8	Roots	3	0.008	5	8	0.008	
48	415.0	Roots	3	0.008	5	8	0.008	
49	421.4	Roots	3	0.008	5	8	0.008	
50	435.8	Crack-Horizontal	3	0.004	5	0	0.004	
51	439.2	Crack-Horizontal	3	0.004	5	0	0.004	
52	442.5	Crack-Horizontal	3	0.004	5	0	0.004	
53	445.3	Crack-Horizontal	3	0.004	5	0	0.004	
54	448.9	Crack-Horizontal	3	0.004	5	0	0.004	
55	451.7	Crack-Horizontal	3	0.004	5	0	0.004	
56	454.6	Broken Pipe	3	0.010	60	0	0.010	
57	458.0	Broken Pipe	3	0.010	60	0	0.010	
58	460.9	Crack-Horizontal	3	0.004	5	0	0.004	
59	463.9	Crack-Horizontal	3	0.004	5	0	0.004	
60	466.8	Crack-Horizontal	3	0.004	5	0	0.004	
61	469.8	Crack-Horizontal	3	0.004	5	0	0.004	
62	492.0	Crack-Horizontal	2	0.002	2	0	0.002	
63	615.3	Crack-Horizontal	3	0.004	5	0	0.004	
64	617.5	Roots	3	0.008	5	8	0.008	
65	620.4	Crack-Horizontal	3	0.004	5	0	0.004	
66	623.9	Crack-Horizontal	3	0.004	5	0	0.004	
67	626.6	Crack-Horizontal	3	0.004	5	0	0.004	
68	629.3	Roots	3	0.008	5	8	0.008	
69	634.4	Crack-Horizontal	3	0.004	5	0	0.004	
70	636.5	Crack-Horizontal	3	0.004	5	0	0.004	
71	639.3	Crack-Horizontal	3	0.004	5	0	0.004	
72	642.9	Crack-Horizontal	3	0.004	5	0	0.004	
73	646.1	Crack-Horizontal	3	0.004	5	0	0.004	
74	648.8	Crack-Horizontal	3	0.004	5	0	0.004	
75	652.5	Broken Pipe	3	0.010	60	0	0.010	
76	655.1	Roots	3	0.008	5	8	0.008	
77	655.6	Crack-Horizontal	0	0.000	0	0	0.000	
78	657.8	Crack-Horizontal	3	0.004	5	0	0.004	
79	660.5	Broken Pipe	3	0.010	60	0	0.010	
80	664.2	Crack-Horizontal	3	0.004	5	0	0.004	
81	666.7	Broken Pipe	3	0.010	60	0	0.010	
82	669.9	Broken Pipe	3	0.010	60	0	0.010	
83	673.1	Broken Pipe	3	0.010	60	0	0.010	
84	676.0	Broken Pipe	3	0.010	60	0	0.010	
85	679.3	Broken Pipe	3	0.010	60	0	0.010	
86	682.2	Crack-Horizontal	4	0.008	10	0	0.008	
87	685.5	Crack-Horizontal	4	0.008	10	0	0.008	
88	688.1	Crack-Horizontal	3	0.004	5	0	0.004	
89	703.2	Broken Pipe	3	0.010	60	0	0.010	
90	705.6	Last 5' of pipe busted/shifted	Broken Pipe	4	0.030	78	0	0.030
91	708.0	5744-882 / DS Manhole / 3425 EAST DUNHAM	INSIDE DROP					<i>Should be able to line through broken pipe</i>