

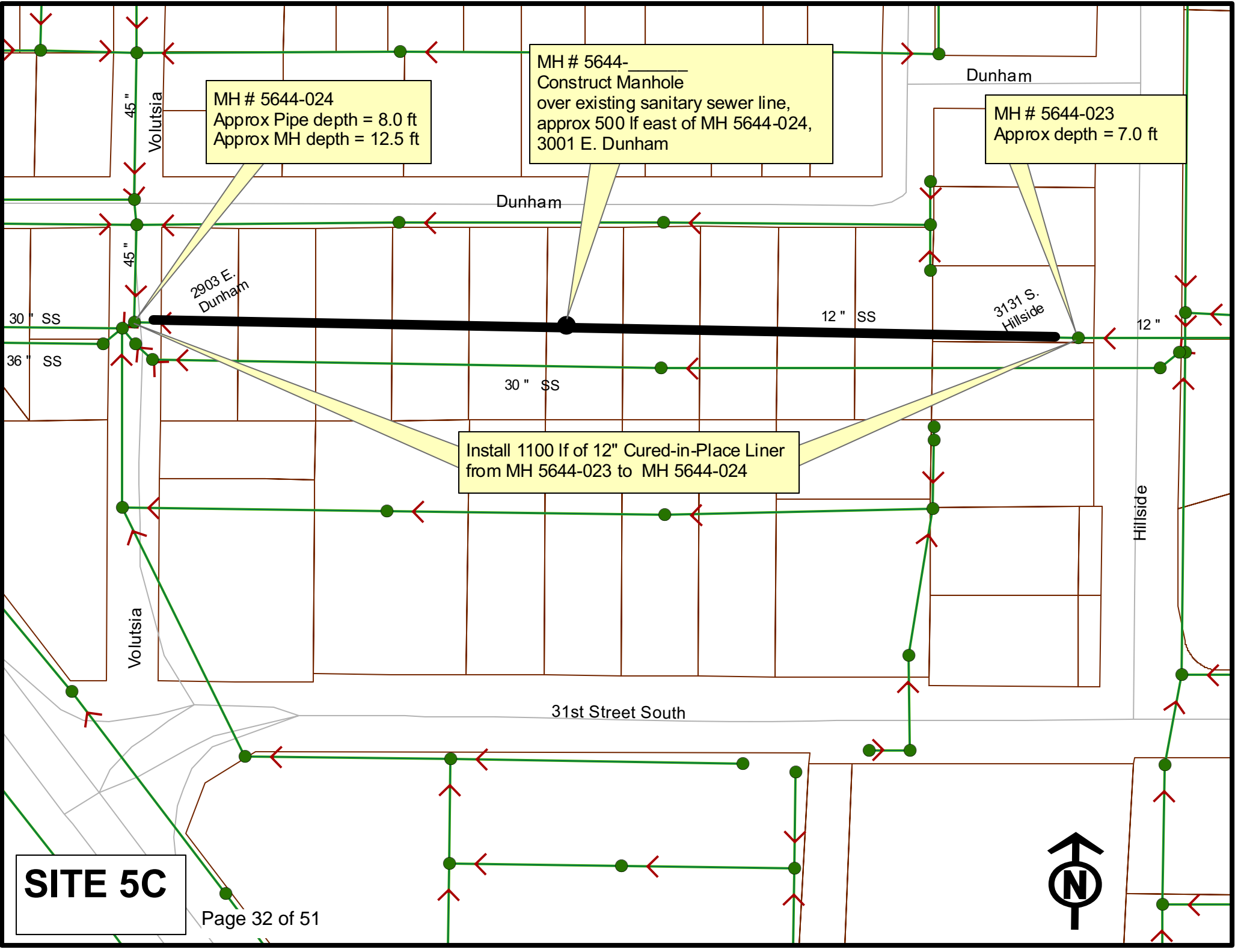
MH # 5644-024
Approx Pipe depth = 8.0 ft
Approx MH depth = 12.5 ft

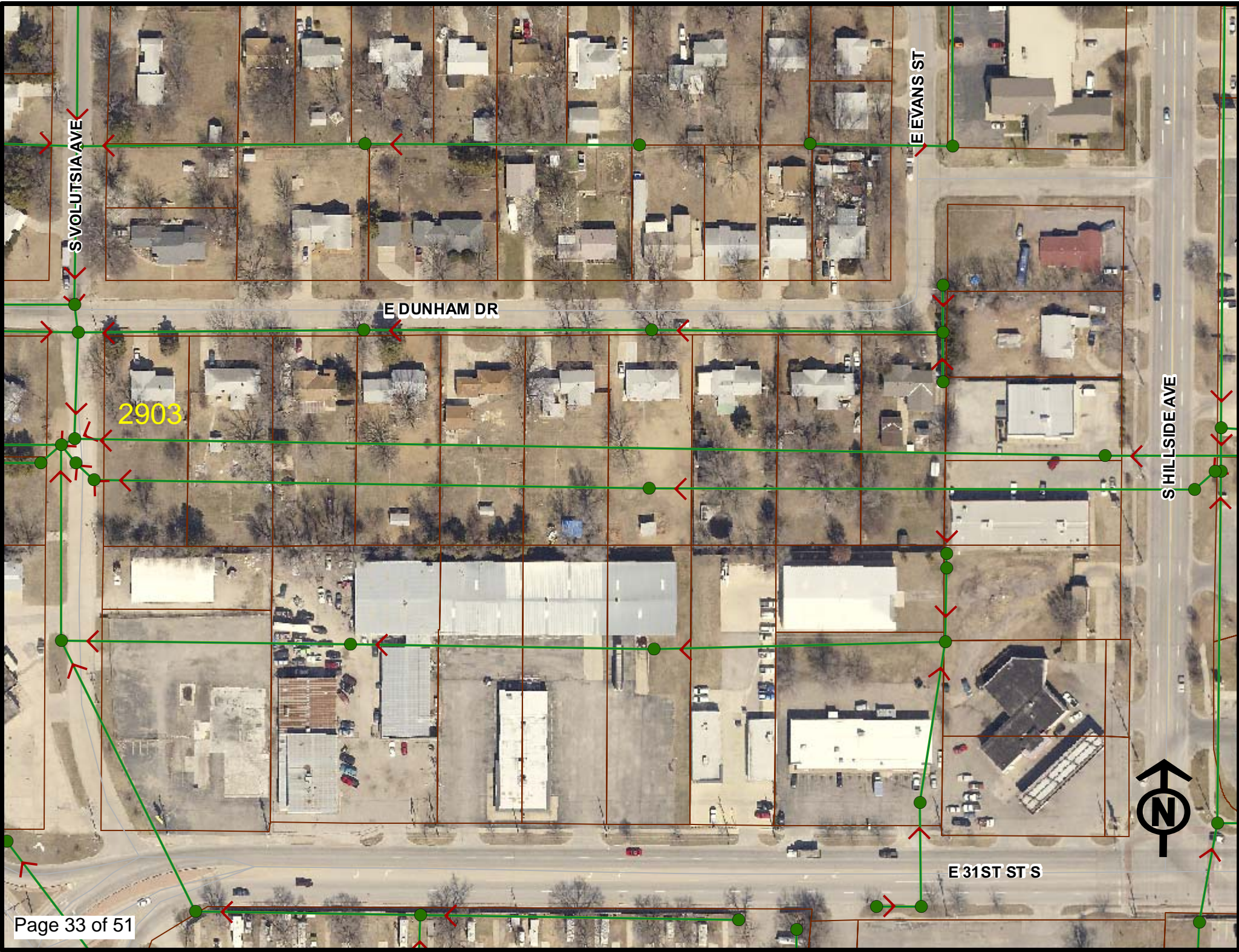
MH # 5644-
Construct Manhole
over existing sanitary sewer line,
approx 500 lf east of MH 5644-024,
3001 E. Dunham

MH # 5644-023
Approx depth = 7.0 ft

Install 1100 lf of 12" Cured-in-Place Liner
from MH 5644-023 to MH 5644-024

SITE 5C





2903

Television Inspection Master Report

12/2/2010

8:08 AM

US Structure: 5644-023 3141 S HILLSIDE ST Date Insp: 3/18/2010 Basin: C01A
 DS Structure: 5644-024 2813 E DUNHAM ST Dir Televised:Upstream To Downstream

Pipe Information

Project No. : J-136 Dia: 12 Material: VCP Length: 1100.0 Slope: 0.220 Tape ID: DVD #0564

Obs. #	VTR Counter	Distance	Location	Description	Rating	Obsrvd (gpm)	Ratings			Remain (gpm)
							Est. (gpm)	Struct	Clean	
1		0.0		5644-023 US Manhole	3143 S HILLSIDE					
2		263.6		Roots	1	0.002	1	1	0.002	
3		266.3		Roots	1	0.002	1	1	0.002	
4		269.6		Roots	2	0.004	2	4	0.004	
5		275.3		Roots	2	0.004	2	4	0.004	
6		281.7		Roots	1	0.002	1	1	0.002	
7		285.0		Roots	1	0.002	1	1	0.002	
8		288.1		Roots	3	0.008	5	8	0.008	
9		290.6		Roots	1	0.002	1	1	0.002	
10		294.3		Roots	1	0.002	1	1	0.002	
11		296.7		Roots	3	0.008	5	8	0.008	
12		299.9		Roots	2	0.004	2	4	0.004	
13		303.2		Roots	2	0.004	2	4	0.004	
14		305.9		Roots	3	0.008	5	8	0.008	
15		309.1		Roots	2	0.004	2	4	0.004	
16		312.1		Roots	4	0.010	10	25	0.010	
17		314.8		Roots	2	0.004	2	4	0.004	
18		318.3		Roots	4	0.010	10	25	0.010	
19		323.9		Roots	1	0.002	1	1	0.002	
20		327.1		Roots	2	0.004	2	4	0.004	
21		344.9		Roots	1	0.002	1	1	0.002	
22		348.0		Roots	3	0.008	5	8	0.008	
23		357.8		Crack-Horizontal	2	0.002	2	0	0.002	
24		360.9		Crack-Horizontal	2	0.002	2	0	0.002	
25		364.0		Crack-Horizontal	2	0.002	2	0	0.002	
26		366.8		Crack-Horizontal	2	0.002	2	0	0.002	
27		370.3		Crack-Horizontal	2	0.002	2	0	0.002	
28		400.1		Crack-Horizontal	2	0.002	2	0	0.002	
29		403.3		Crack-Horizontal	2	0.002	2	0	0.002	
30		406.4		Crack-Horizontal	2	0.002	2	0	0.002	
31		436.8		Broken Pipe	2	0.008	44	0	0.008	
32		440.1		Crack-Horizontal	1	0.001	1	0	0.001	
33		442.8		Crack-Horizontal	1	0.001	1	0	0.001	
34		533.6		Crack-Horizontal	1	0.001	1	0	0.001	
35		536.7		Crack-Horizontal	1	0.001	1	0	0.001	
36		539.7		Crack-Horizontal	2	0.002	2	0	0.002	



Wichita Water Utilities – Connect With Us!

Television Inspection Master Report

12/2/2010

8:08 AM

US Structure: 5644-023
DS Structure: 5644-024

3141 S HILLSIDE ST
2813 E DUNHAM ST

Date Insp: 3/18/2010

Basin: C01A

Dir Televised: Upstream To Downstream

37	543.1	Crack-Horizontal	2	0.002	2	0	0.002
38	601.1	Crack-Horizontal	1	0.001	1	0	0.001
39	603.4	Crack-Horizontal	1	0.001	1	0	0.001
40	612.5	Crack-Horizontal	1	0.001	1	0	0.001
41	616.5	Crack-Horizontal	1	0.001	1	0	0.001
42	618.9	Crack-Horizontal	1	0.001	1	0	0.001
43	627.7	Broken Pipe	1	0.004	30	0	0.004
44	631.1	Crack-Horizontal	1	0.001	1	0	0.001
45	646.1	Crack-Horizontal	1	0.001	1	0	0.001
46	672.5	Roots	1	0.002	1	1	0.002
47	697.4	Roots	1	0.002	1	1	0.002
48	707.0	Crack-Horizontal	2	0.002	2	0	0.002
49	712.6	Crack-Horizontal	2	0.002	2	0	0.002
50	716.0	Crack-Horizontal	2	0.002	2	0	0.002
51	719.0	Crack-Horizontal	2	0.002	2	0	0.002
52	742.8	Roots	1	0.002	1	1	0.002
53	752.0	Roots	1	0.002	1	1	0.002
54	754.4	Roots	1	0.002	1	1	0.002
55	754.4	Stopped Inspection					

SEE REVERSE SETUP



Television Inspection Master Report

12/2/2010

8:08 AM

US Structure: 5644-023
DS Structure: 5644-024

3141 S HILLSIDE ST
2813 E DUNHAM ST

Date Insp: 3/18/2010

Basin: C01A

Dir Televised: Downstream to Upstream

REVERSE SETUP:

Obs. #	VTR Counter	Distance	Location	Description	Rating	Obsrvd (gpm)	Ratings		Remain (gpm)
							Est. (gpm)	Struct Clean	
1		0.0		5644-024 DS Manhole	3100 S VOLUTSIA				
2		46.6		Crack-Horizontal	2	0.002	2	0	0.002
3		56.5		Crack-Horizontal	2	0.002	2	0	0.002
4		58.1		Crack-Horizontal	3	0.004	5	0	0.004
5		61.8		Crack-Horizontal	2	0.002	2	0	0.002
6		70.3		Break-In Conn	2903 E DUNHAM				
7		77.3		Crack-Horizontal	2	0.002	2	0	0.002
8		82.0		Roots	1	0.002	1	1	0.002
9		110.5		Crack-Horizontal	2	0.002	2	0	0.002
10		113.5		Crack-Horizontal	1	0.001	1	0	0.001
11		122.5		Crack-Horizontal	1	0.001	1	0	0.001
12		188.6		Crack-Horizontal	1	0.001	1	0	0.001
13		190.6		Crack-Horizontal	2	0.002	2	0	0.002
14		194.3		Crack-Horizontal	2	0.002	2	0	0.002
15		197.1		Crack-Horizontal	2	0.002	2	0	0.002
16		217.8		Crack-Horizontal	2	0.002	2	0	0.002
17		230.4		Crack-Horizontal	2	0.002	2	0	0.002
18		233.2		Crack-Horizontal	3	0.004	5	0	0.004
19		242.8		Crack-Horizontal	3	0.004	5	0	0.004
20		245.6		Crack-Horizontal	3	0.004	5	0	0.004
21		248.6		Crack-Horizontal	2	0.002	2	0	0.002
22		286.1		Crack-Horizontal	1	0.001	1	0	0.001
23		288.0		Crack-Horizontal	2	0.002	2	0	0.002
24		291.3		Crack-Horizontal	2	0.002	2	0	0.002
25		293.9		Crack-Horizontal	2	0.002	2	0	0.002
26		297.1		Crack-Horizontal	3	0.004	5	0	0.004
27		299.2		Roots	1	0.002	1	1	0.002
28		300.5		Crack-Horizontal	2	0.002	2	0	0.002
29		303.3		Crack-Horizontal	2	0.002	2	0	0.002
30		312.3		Crack-Horizontal	2	0.002	2	0	0.002
31		314.8		Broken Pipe	2	0.008	44	0	0.008
32		318.2		Crack-Horizontal	3	0.004	5	0	0.004
33		324.4		Crack-Horizontal	2	0.002	2	0	0.002
34		326.2		Roots	1	0.002	1	1	0.002
35		327.5		Crack-Horizontal	2	0.002	2	0	0.002
36		333.8		Roots	1	0.002	1	1	0.002
37		336.5		Roots	2	0.004	2	4	0.004
38		346.0		Roots	1	0.002	1	1	0.002
39		360.6		Stopped Inspection					