

# HEARTLAND PREPAREDNESS CENTER

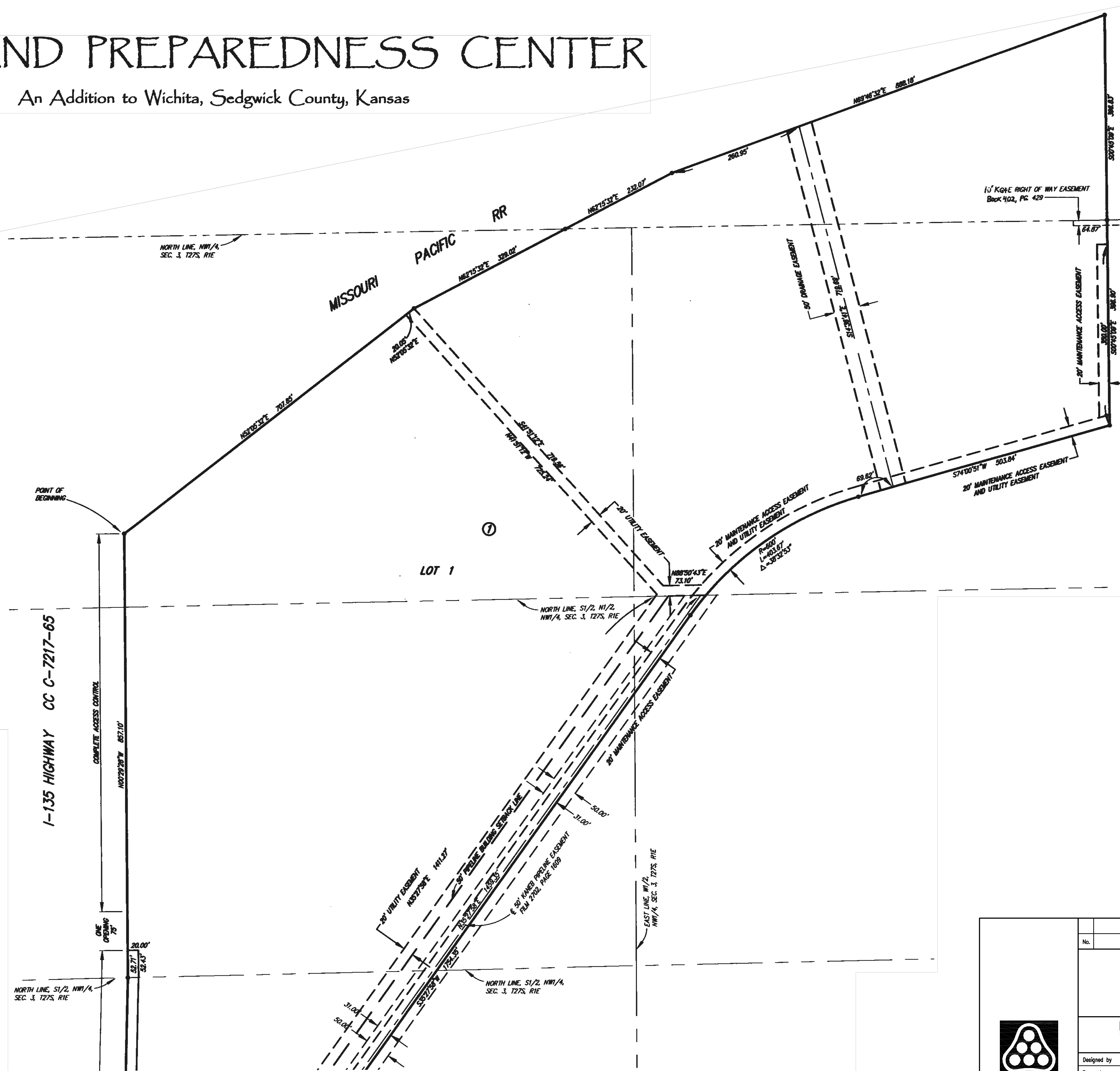
An Addition to Wichita, Sedgwick County, Kansas



1" = 100'

**SURVEY MARKER LEGEND**

- 3/4"  $\circ$  = 3/4" IRON PIPE (FOUND)
- PEC  $\circ$  = 3/4" IRON PIPE W/PEC CAP (FOUND)
- 1"  $\circ$  = 1" IRON PIPE (FOUND)
- CROSS  $\circ$  = CHISELED CROSS IN STONE (FOUND)
- THIMBLE  $\circ$  = 3/4" IRON PIPE IN THIMBLE (FOUND)
- MAG  $\bullet$  = MAG NAIL (SET)
- $\bullet$  = 5/8" REBAR W/RAB CAP (SET)



Saved: 01-10-2011 8:56:00 AM by BJS  
 Plot Scale: 1:100 01-17-2011 3:30:35 PM by BILL J. SEKSON  
 ###

No.	Revision	By	Date
HEARTLAND PREPAREDNESS CENTER PAVING AND DRAINAGE IMPROVEMENTS <b>PLAT</b> JAMES L. ARMOUR, P.E. - CITY ENGINEER CITY OF WICHITA PROJ. NO. 472-84898 <b>Professional Engineering Consultants, P.A.</b> 303 S. TOPEKA • WICHITA, KANSAS 67202 316-262-2691 • FAX 316-262-3003			
Designed by	BMM	Job No.	35-09307
Drawn by	BJS	Date	December 2009
			Sheet 5 of 59

