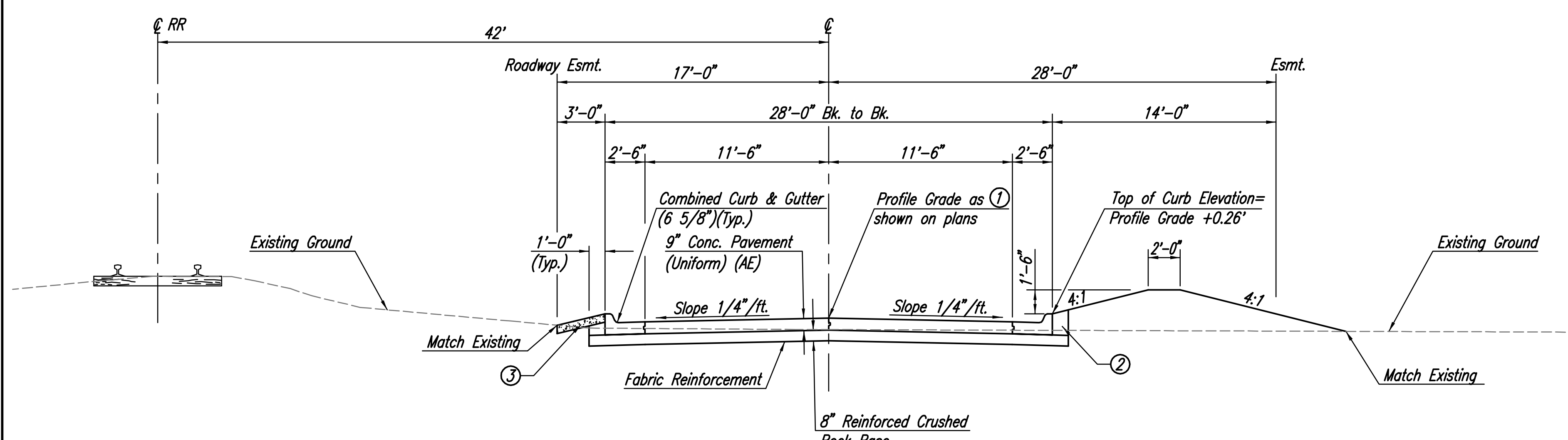
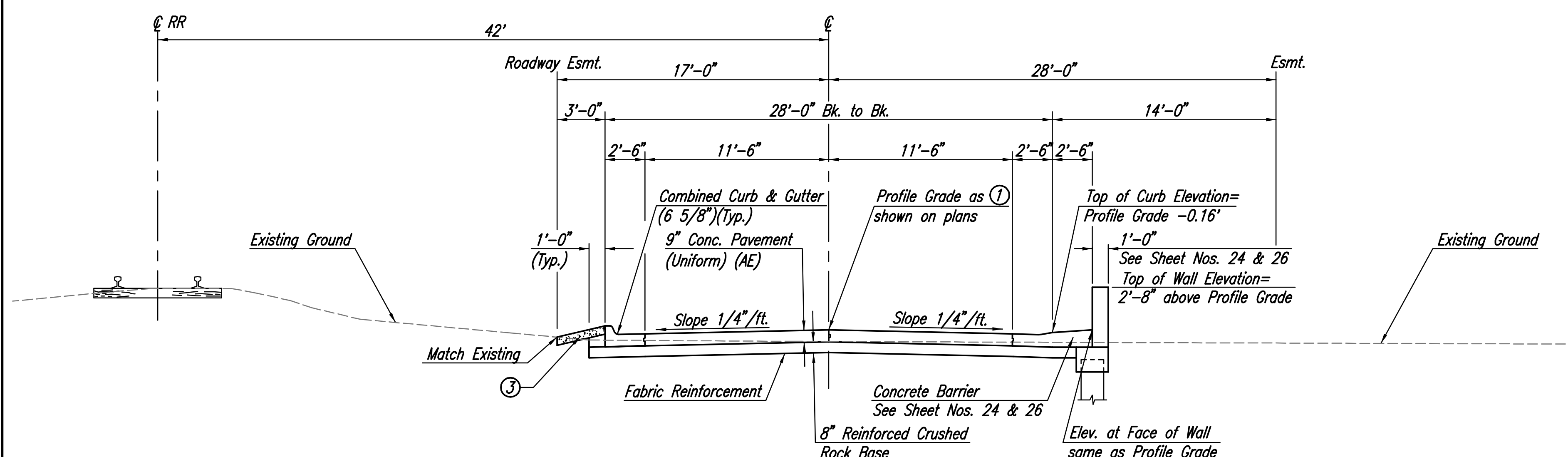


TYPICAL PAVEMENT SECTION—CONCRETE
Access Road Sta. 32+50.00 to Sta. 33+50.00

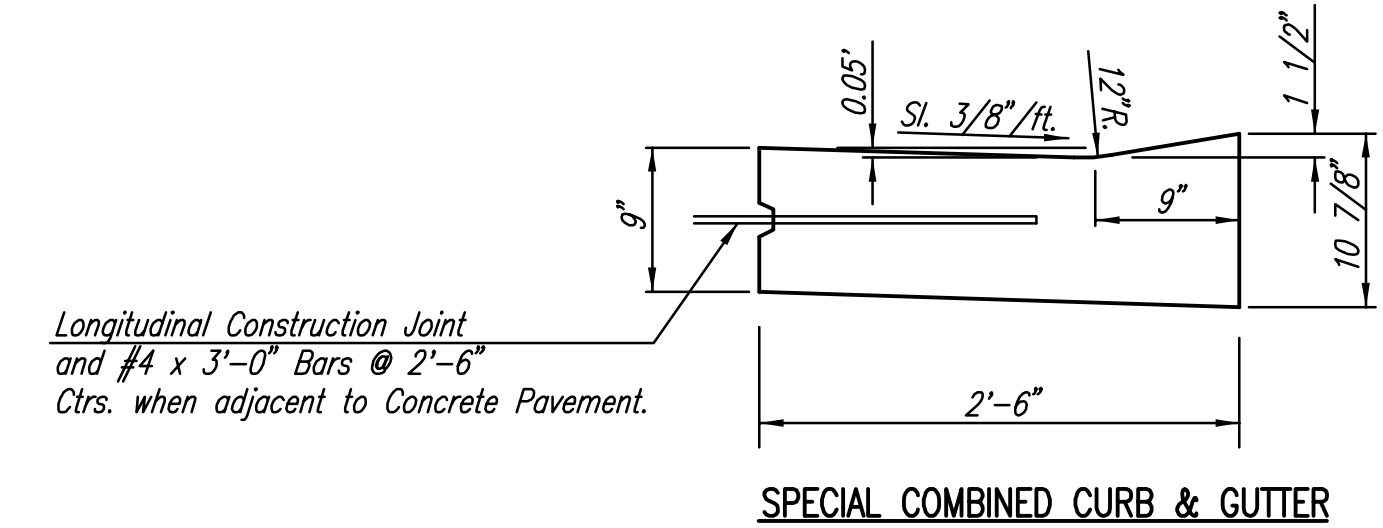


TYPICAL PAVEMENT SECTION—CONCRETE
Access Road Sta. 33+50.00 to Sta. 35+50.91

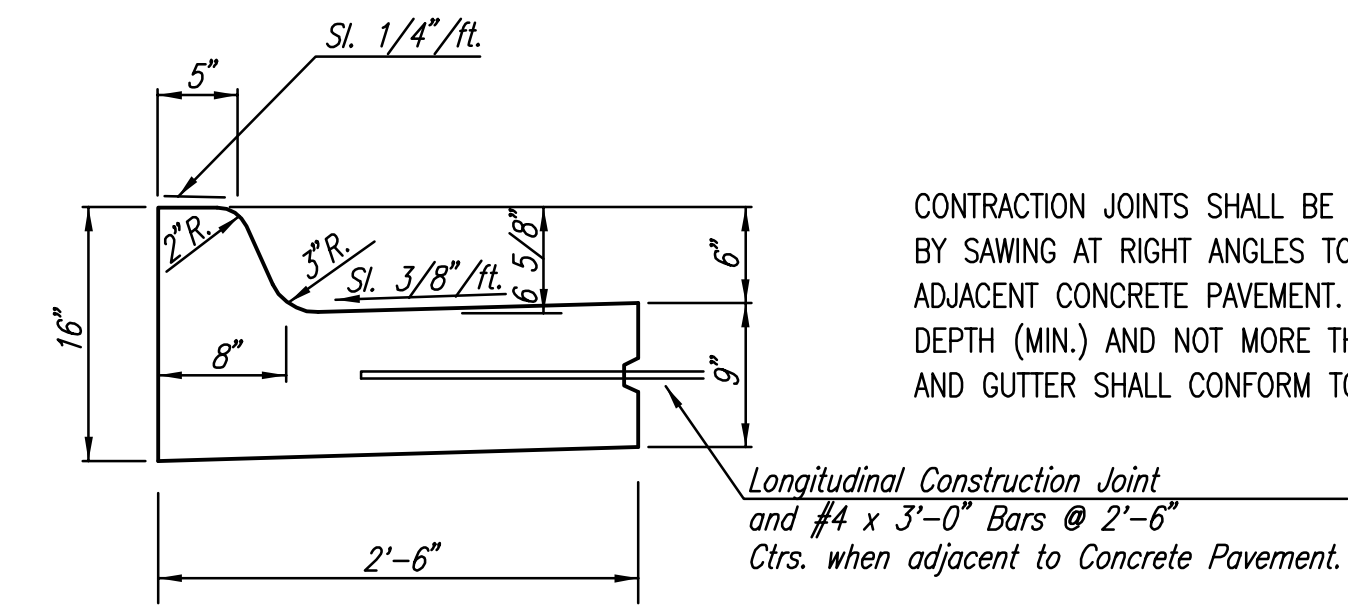


TYPICAL PAVEMENT SECTION—CONCRETE
Access Road Sta. 35+50.91 to Sta. 37+97.91

- ① PROFILE GRADE IS THE THEORETICAL TOP OF PAVEMENT ELEVATION AT \mathcal{C} .
- ② LOOSE BACKFILL BEHIND CURBS IS NOT INCLUDED IN THE EARTHWORK QUANTITY AND SHALL BE CONSIDERED SUBSIDIARY.
- ③ SUBBALLAST PLACED BEHIND CURB AT A DEPTH OF 6". WIDTH VARIES, SEE PLAN. SUBBALLAST MATERIAL SHALL BE SALVAGED OR REPLACED IN KIND. COST SHALL BE SUBSIDIARY TO "SITE RESTORATION".



SPECIAL COMBINED CURB & GUTTER



STANDARD COMBINED CURB & GUTTER (6 5/8 ")

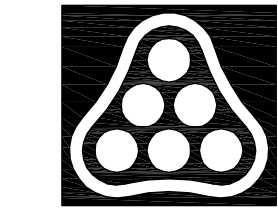
CONTRACTION JOINTS SHALL BE CONSTRUCTED IN ALL CURB & GUTTER BY SAWING AT RIGHT ANGLES TO THE CURB LINE TO MATCH JOINTS IN ADJACENT CONCRETE PAVEMENT. THE SAW CUTS SHALL BE 1 1/4" IN DEPTH (MIN.) AND NOT MORE THAN 3/8" IN WIDTH. SEALING OF CURB AND GUTTER SHALL CONFORM TO SPECIFICATIONS.

CRUSHED ROCK GRADATION REQUIREMENTS

PERCENT OF AGGREGATE RETAINED	
2-1/2"	0
3/4"	20-60
#4	50-80
#40	80-94
#200	90-98

ROCK QUALITY SHALL CONFORM TO THE REQUIREMENTS SPECIFIED BY THE KDOT 2007 EDITION STANDARD SPECIFICATION SUBSECTION 1102 FOR DURABILITY CLASS I.

Scaled 01-17-2011 2:13:02 PM by BJS
 Plot Scale 1:5 01-18-2011 8:41:14 AM by BILL J. SEDSON
 G:\2009\09307\000\PAVING\09307-086-26 TYPICAL SECTION



No.	Revision	By	Date
HEARTLAND PREPAREDNESS CENTER PAVING AND DRAINAGE IMPROVEMENTS TYPICAL PAVING SECTIONS JAMES L. ARMOUR, P.E.— CITY ENGINEER CITY OF WICHITA PROJ. NO. 472-84898 Professional Engineering Consultants, P.A. 303 S. TOPEKA • WICHITA, KANSAS 67202 316-262-2691 • FAX 316-262-3003			
Designed by	BMM	Job No.	35-09307
Drawn by	BJS	Date	December 2009