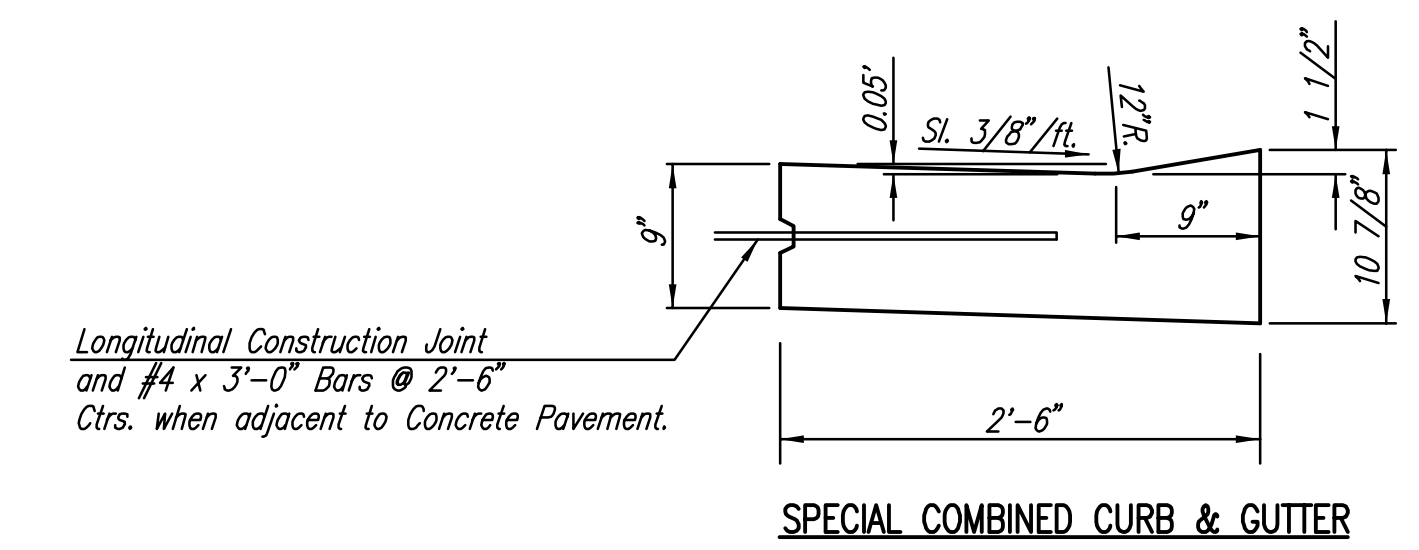
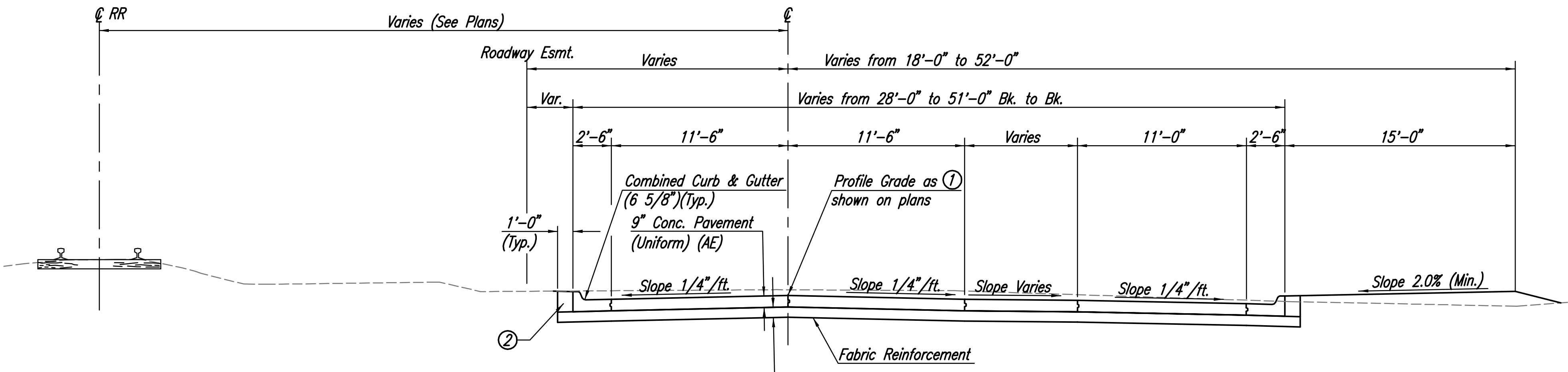


**TYPICAL PAVEMENT SECTION-CONCRETE**  
Access Road Sta. 37+97.91 to Sta. 47+13.48

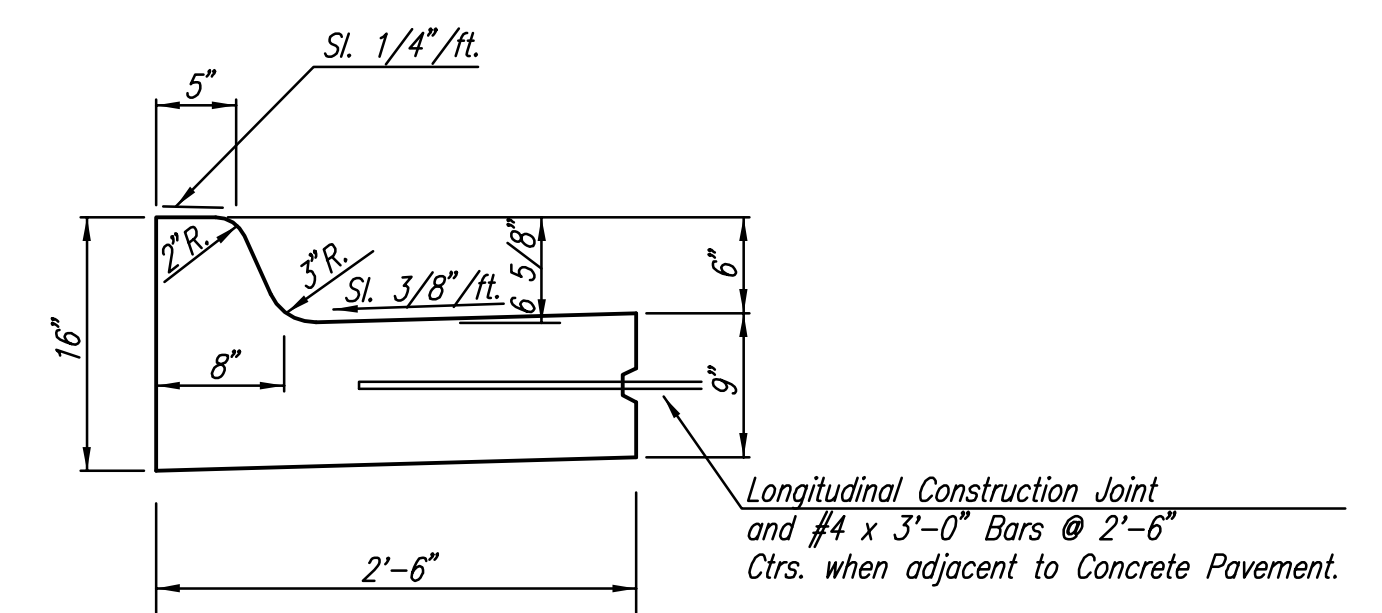
- ① PROFILE GRADE IS THE THEORETICAL TOP OF PAVEMENT ELEVATION AT C.
- ② LOOSE BACKFILL BEHIND CURBS IS NOT INCLUDED IN THE EARTHWORK QUANTITY AND SHALL BE CONSIDERED SUBSIDIARY.
- ③ SUBBALLAST PLACED BEHIND CURB AT A DEPTH OF 6". WIDTH VARIES, SEE PLAN. SUBBALLAST MATERIAL SHALL BE SALVAGED OR REPLACED IN KIND. COST SHALL BE SUBSIDIARY TO "SITE RESTORATION".



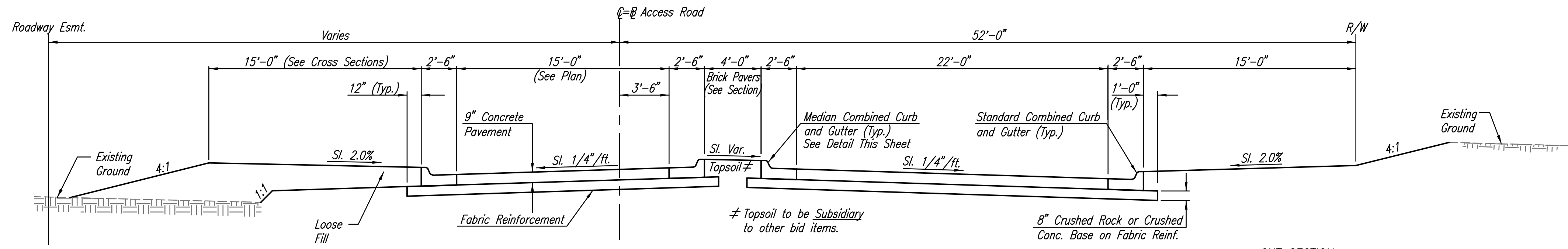
**SPECIAL COMBINED CURB & GUTTER**



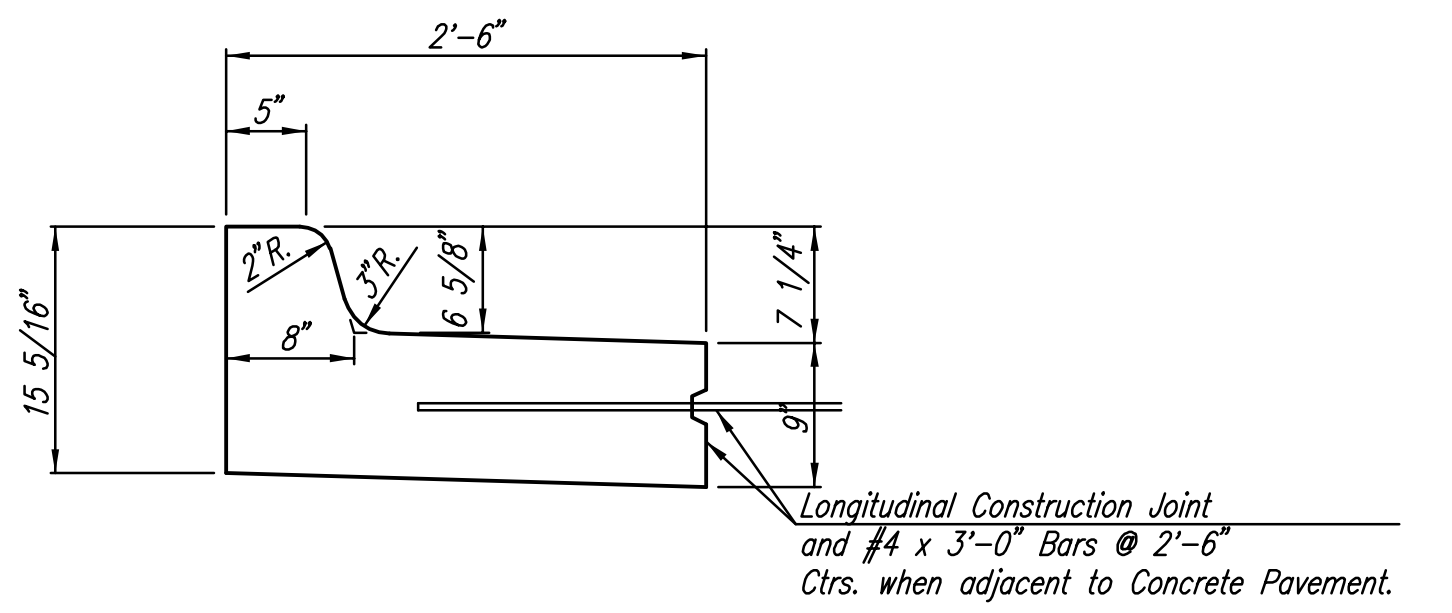
**TYPICAL PAVEMENT SECTION-CONCRETE**  
Access Road Sta. 47+13.48 to Sta. 48+50.25



**STANDARD COMBINED CURB & GUTTER (6 5/8")**

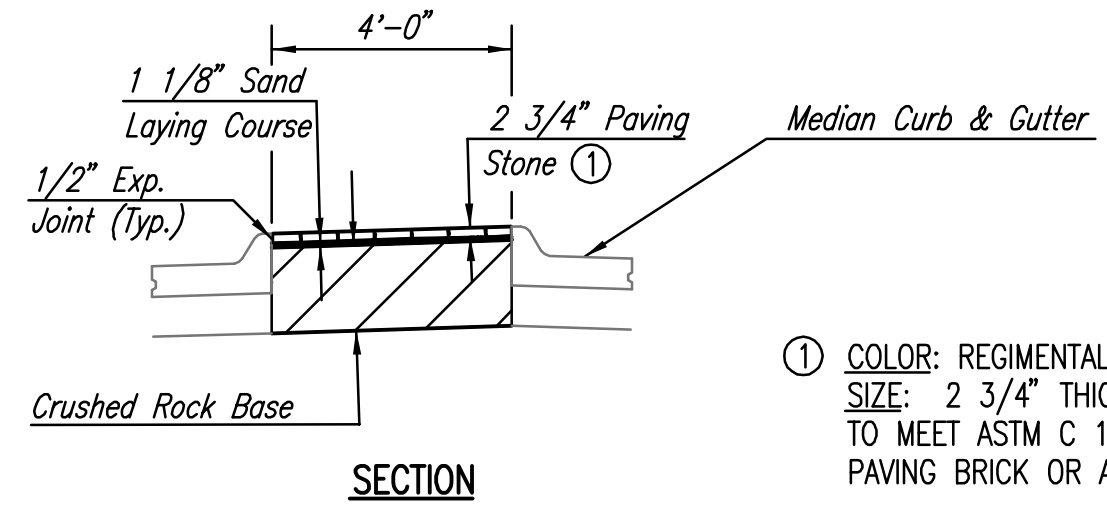


**TYPICAL SECTION**  
Sta. 48+50.25 to Sta. 49+12.82



**MEDIAN COMBINED CURB & GUTTER (6 5/8")**

CONTRACTION JOINTS SHALL BE CONSTRUCTED IN ALL CURB & GUTTER BY SAWING AT RIGHT ANGLES TO THE CURB LINE TO MATCH JOINTS IN ADJACENT CONCRETE PAVEMENT. THE SAW CUTS SHALL BE 1 1/4" IN DEPTH (MIN.) AND NOT MORE THAN 3/8" IN WIDTH. SEALING OF CURB AND GUTTER SHALL CONFORM TO SPECIFICATIONS.



**SECTION**

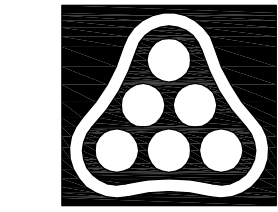
① COLOR: REGIMENTAL RED FULL RANGE BY THE BELDEN BRICK COMPANY  
SIZE: 2 3/4" THICK X 4" WIDTH X 8" LENGTH CLAY PAVER WITH CHAMFERED EDGE TO MEET ASTM C 1272-02, TYPE F, STANDARD SPECIFICATION FOR HEAVY VEHICULAR PAVING BRICK OR APPROVED EQUAL.

**CRUSHED ROCK GRADATION REQUIREMENTS**

PERCENT OF AGGREGATE RETAINED	
2-1/2"	0
3/4"	20-60
#4	50-80
#40	80-94
#200	90-98

ROCK QUALITY SHALL CONFORM TO THE REQUIREMENTS SPECIFIED BY THE KDOT 2007 EDITION STANDARD SPECIFICATION SUBSECTION 1102 FOR DURABILITY CLASS I.

Scaled 01-18-2011 4:51:25 PM by BJS  
 Plot Scale 1:5 01-18-2011 5:49:03 PM by BILL J. SEDSON  
 G:\2009\09307\000\PAVING\09307-09c-26 TYPICAL SECTION



No.	Revision	By	Date
HEARTLAND PREPAREDNESS CENTER PAVING AND DRAINAGE IMPROVEMENTS <b>TYPICAL PAVING SECTIONS</b> JAMES L. ARMOUR, P.E. - CITY ENGINEER CITY OF WICHITA PROJ. NO. 472-84898 <b>Professional Engineering Consultants, P.A.</b> 303 S. TOPEKA • WICHITA, KANSAS 67202 316-262-2691 • FAX 316-262-3003			
Designed by	BMM	Job No.	35-09307
Drawn by	BJS	Date	December 2009