

BY	DATE
CHECKED	CHECKED
PLAN	

BY	DATE
CHECKED	CHECKED
PROFILE	

Scaled 01-18-2011 4:48:16 PM by BLS
 Plot Scale 1:20 01-18-2011 5:51:35 PM by BILL J. SEJOSON
 G:\2009\09307\000\PAVING\09307-11C-PAVING PLAN 2

☉ CURVE DATA
 CURVE DATA BASED ON ☉ radius Δ/2= 2° 50' 21"

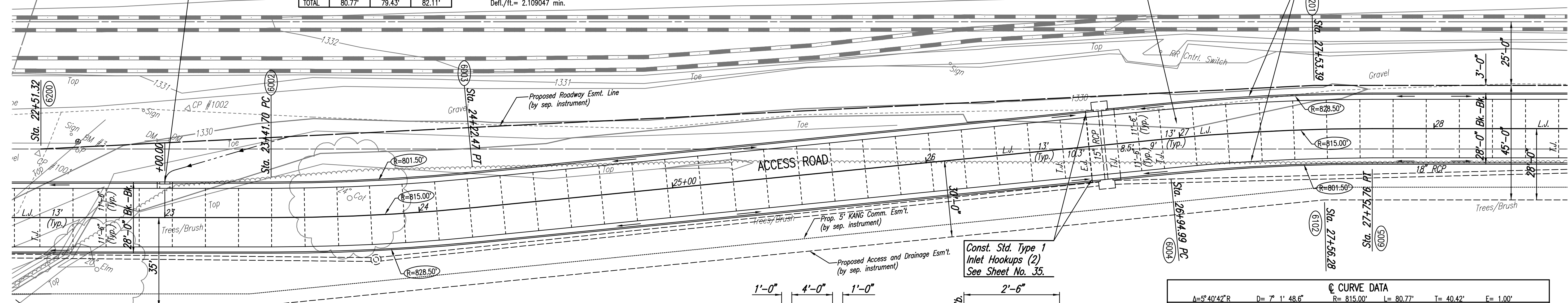
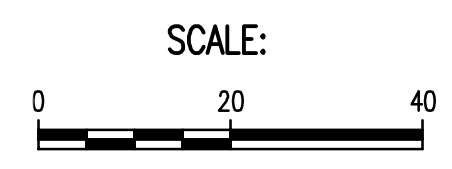
☉ STATION	☉ ARC LENGTH	FACE CURB LENGTH		CHORD LENGTH		DEFLECTION ANGLE	☉ TOTAL DEFLECTION
		LEFT CURB	RIGHT CURB	8' OFF LEFT FACE CURB	8' OFF RIGHT FACE CURB		
23+41.70						0°00'00.0"	0°00'00.0"
23+50.00	8.30'	8.16'	8.44'	8.08'	8.52'	00°17'30.3"	00°17'30.3"
23+75.00	25.00'	24.59'	25.41'	24.34'	25.66'	00°52'43.6"	01°10'13.9"
24+00.00	25.00'	24.59'	25.41'	24.34'	25.66'	00°52'43.6"	02°02'57.5"
24+22.47	22.47'	22.10'	22.84'	21.88'	23.08'	00°47'23.4"	02°50'21.0"
TOTAL	80.77'	79.43'	82.11'				

Defl./ft. = 2.109047 min.

COORDINATE LIST FOR ROADWAY ESMT.

POINT	NORTH	EAST
6200	40,550.4482	40,004.7211
6201	40,744.4237	40,466.2387

ALL TREES OR SHRUBS WITHIN THE ROADWAY AND ACCESS AND DRAINAGE EASEMENT SHALL BE REMOVED. SEE SHEET NO. 2, GENERAL NOTE 15.



JOINT LEGEND

TYPE	DESCRIPTION
E.J.	EXPANSION JOINT
L.J.	LONGITUDINAL JOINT
T.J.	TRANSVERSE JOINT

See Sheet No. 18 for Joint Details
 ANY DEVIATIONS FROM THE JOINTING PLAN MUST BE APPROVED BY THE ENGINEER.

COORDINATE LIST (AT ☉)

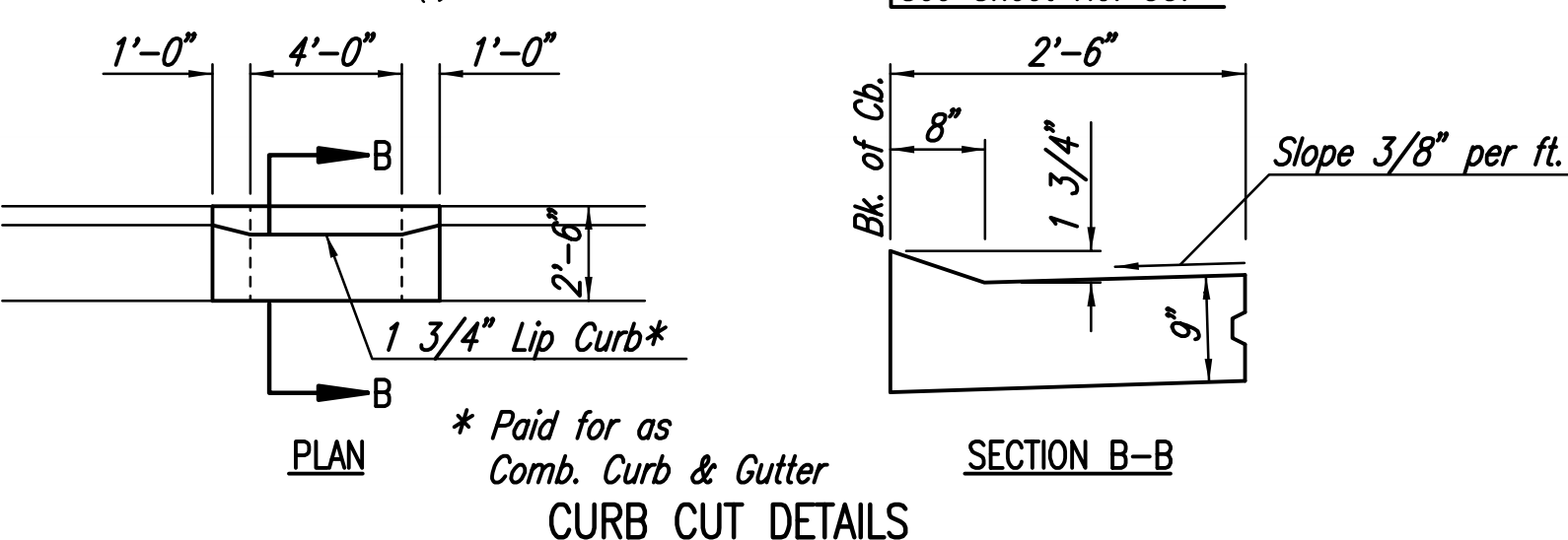
POINT	NORTH	EAST
6002	40,555.9165	40,098.8804
6003	40,587.1699	40,173.3248
6004	40,704.9770	40,419.0645
6005	40,736.2305	40,493.5090

☉ = COORDINATE POINT NO.
 SEE SHEET NO. 3 FOR HORIZONTAL CONTROL.

COORDINATE LIST FOR ACCESS & DRAIN ESMT.

POINT	NORTH	EAST
6101	40,520.1077	40,102.8343
6102	40,703.4926	40,485.3659

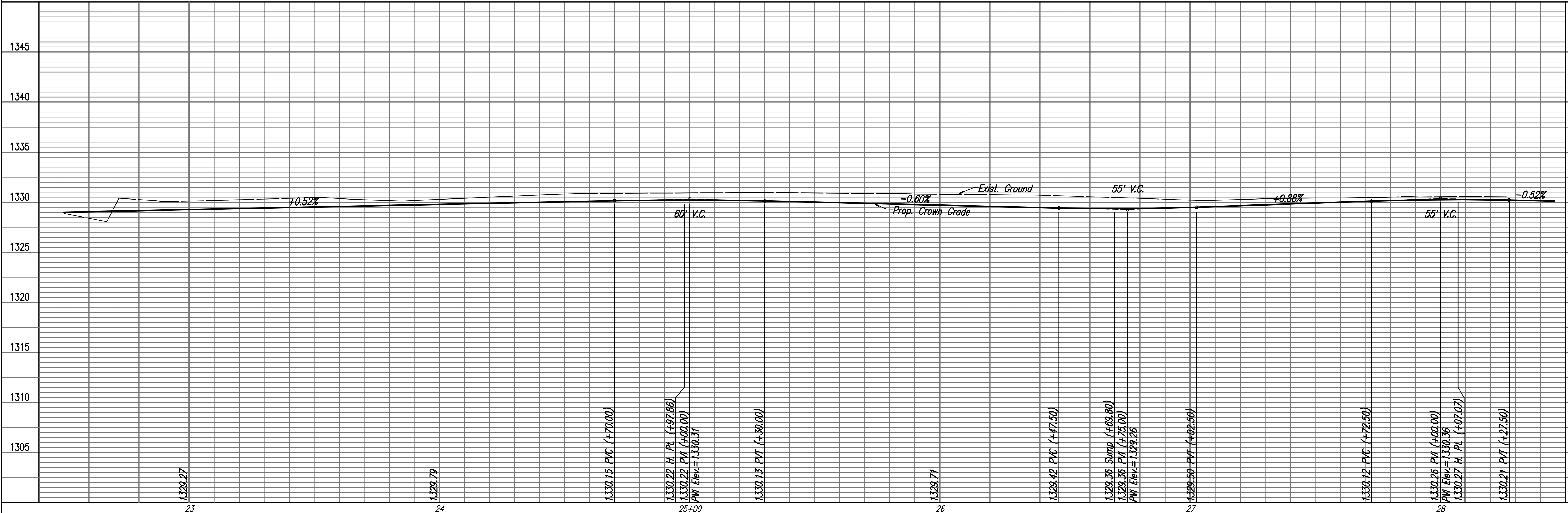
☉ = COORDINATE POINT NO.
 SEE SHEET NO. 3 FOR HORIZONTAL CONTROL.



☉ CURVE DATA
 CURVE DATA BASED ON ☉ radius Δ/2= 2° 50' 21"

☉ STATION	☉ ARC LENGTH	FACE CURB LENGTH		CHORD LENGTH		DEFLECTION ANGLE	☉ TOTAL DEFLECTION
		LEFT CURB	RIGHT CURB	8' OFF LEFT FACE CURB	8' OFF RIGHT FACE CURB		
26+94.99						0°00'00.0"	0°00'00.0"
27+00.00	5.01'	5.09'	4.93'	5.14'	4.88'	00°10'34.0"	00°10'34.0"
27+25.00	25.00'	25.41'	24.59'	25.66'	24.34'	00°52'43.6"	01°03'17.6"
27+50.00	25.00'	25.41'	24.59'	25.66'	24.34'	00°52'43.6"	01°56'01.1"
27+75.00	25.00'	25.41'	24.59'	25.66'	24.34'	00°52'43.6"	02°48'44.7"
27+75.76	0.76'	0.77'	0.75'	0.78'	0.74'	00°01'36.2"	02°50'21.0"
TOTAL	80.77'	82.11'	79.43'				

Defl./ft. = 2.109047 min.



HEARTLAND PREPAREDNESS CENTER
 PAVING AND DRAINAGE IMPROVEMENTS
ACCESS ROAD
 STA. 22+50 TO STA. 28+50
 JAMES L. ARMOUR, P.E. - CITY ENGINEER
 CITY OF WICHITA, KANSAS
 JOB NO. 35-09307
 DATE December 2009

Professional Engineering Consultants, P.A.
 303 S. TOPEKA, WICHITA, KANSAS 67202
 316-262-2091 • FAX 316-262-3003
 Designed By: BMM
 Drawn By: BUS
 Sheet 11 of 59