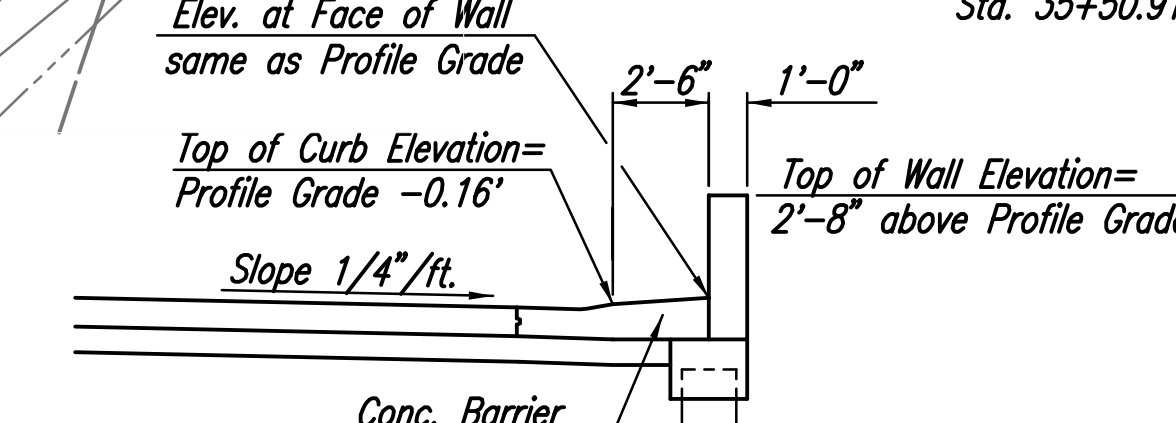
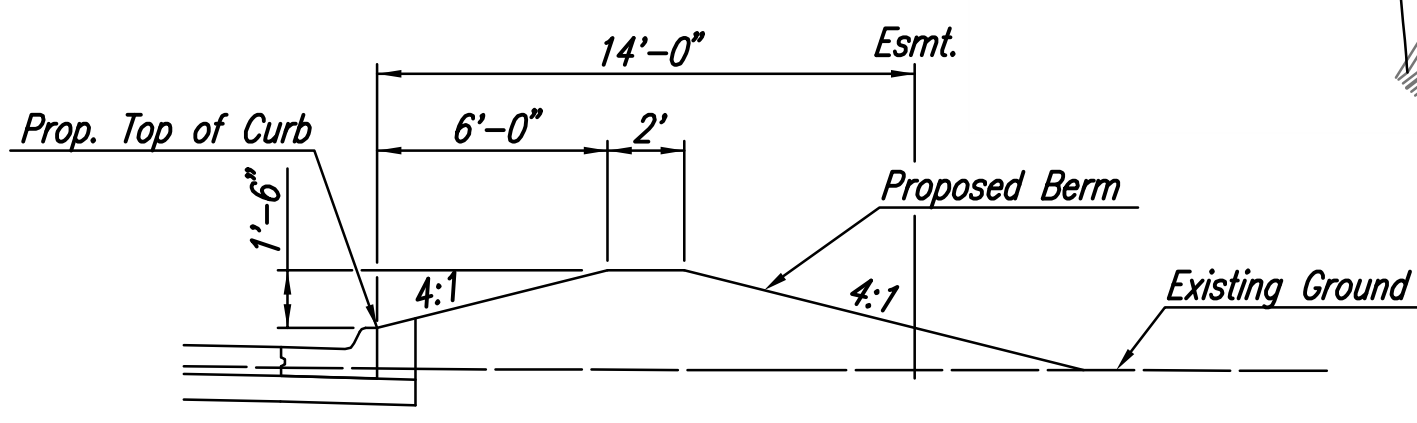
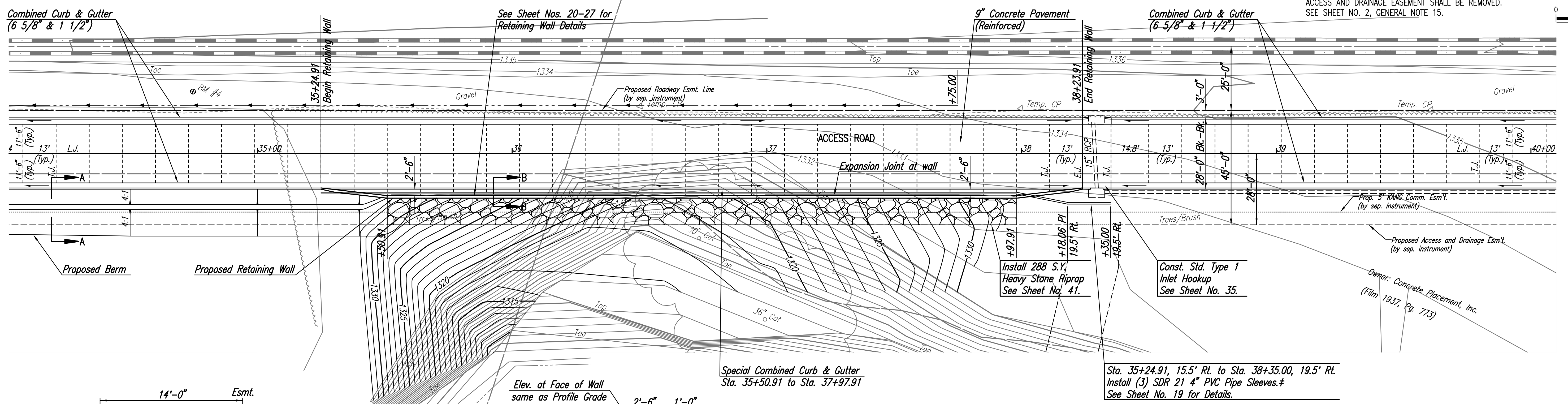


ALL TREES OR SHRUBS WITHIN THE ROADWAY AND ACCESS AND DRAINAGE EASEMENT SHALL BE REMOVED. SEE SHEET NO. 2, GENERAL NOTE 15.



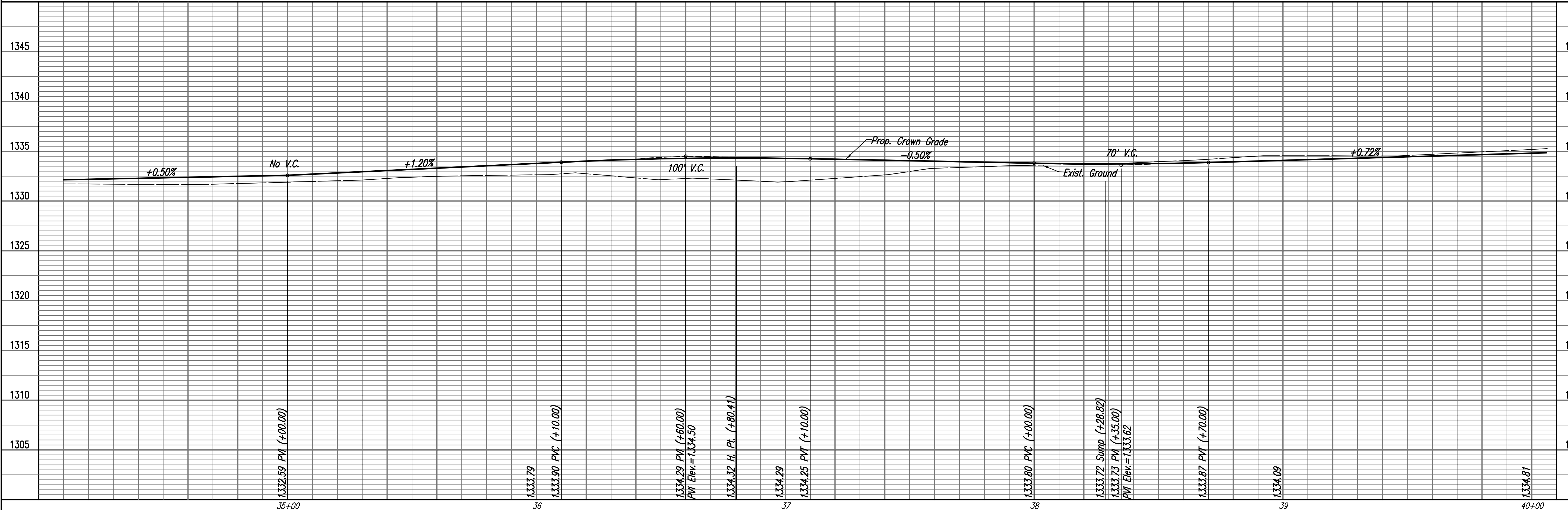
JOINT LEGEND	
TYPE	DESCRIPTION
E.J.	EXPANSION JOINT
L.J.	LONGITUDINAL JOINT
T.J.	TRANSVERSE JOINT

See Sheet No. 18 for Joint Details  
 ANY DEVIATIONS FROM THE JOINTING PLAN MUST BE APPROVED BY THE ENGINEER.

\*Sleeves to be 42" below top of curb.  
 Each end of 4" PVC pipe sleeves shall be capped and marked with steel "T" posts or 2" diameter steel pipe a maximum of 12" above finished grade. Pipe, caps, markers, curb stamp and installation thereof shall be bid price per linear foot "PVC Sleeves".

PLAN	CHECKED	DATE
	CHECKED	

PROFILE	CHECKED	DATE
	CHECKED	



Saved: 01-18-2011 4:49:27 PM by BJS  
 Plot Scale: 1:20 01-18-2011 5:57:40 PM by BILL J. SEJOSON  
 G:\2009\09307\000\PAVING\09307-13C-PAVING PLAN 4

HEARTLAND PREPAREDNESS CENTER  
 PAVING AND DRAINAGE IMPROVEMENTS  
**ACCESS ROAD**  
 STA. 34+50 TO STA. 40+00  
 JAMES L. ARMOUR, P.E. - CITY ENGINEER  
 CITY OF WICHITA, KAN. PROJ. NO. 472-84698

Professional Engineering Consultants, P.A.  
 309 S. TOPEKA AVE., SUITE 100, WICHITA, KANSAS 67202  
 316-262-2291 • FAX 316-262-3063

Designed By: BMM  
 Drawn By: BUS  
 Job No.: 35-09307  
 Date: December 2009