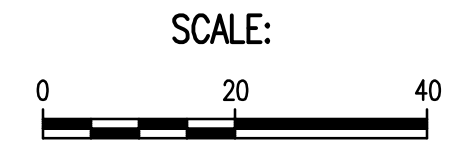
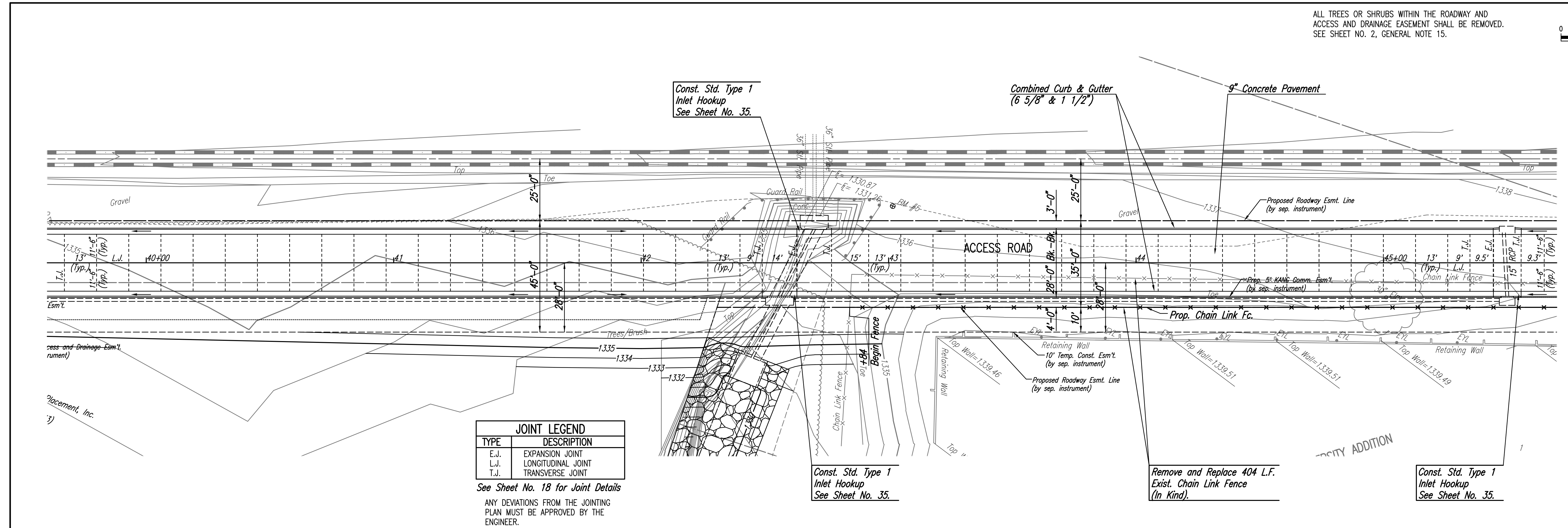


ALL TREES OR SHRUBS WITHIN THE ROADWAY AND ACCESS AND DRAINAGE EASEMENT SHALL BE REMOVED. SEE SHEET NO. 2, GENERAL NOTE 15.



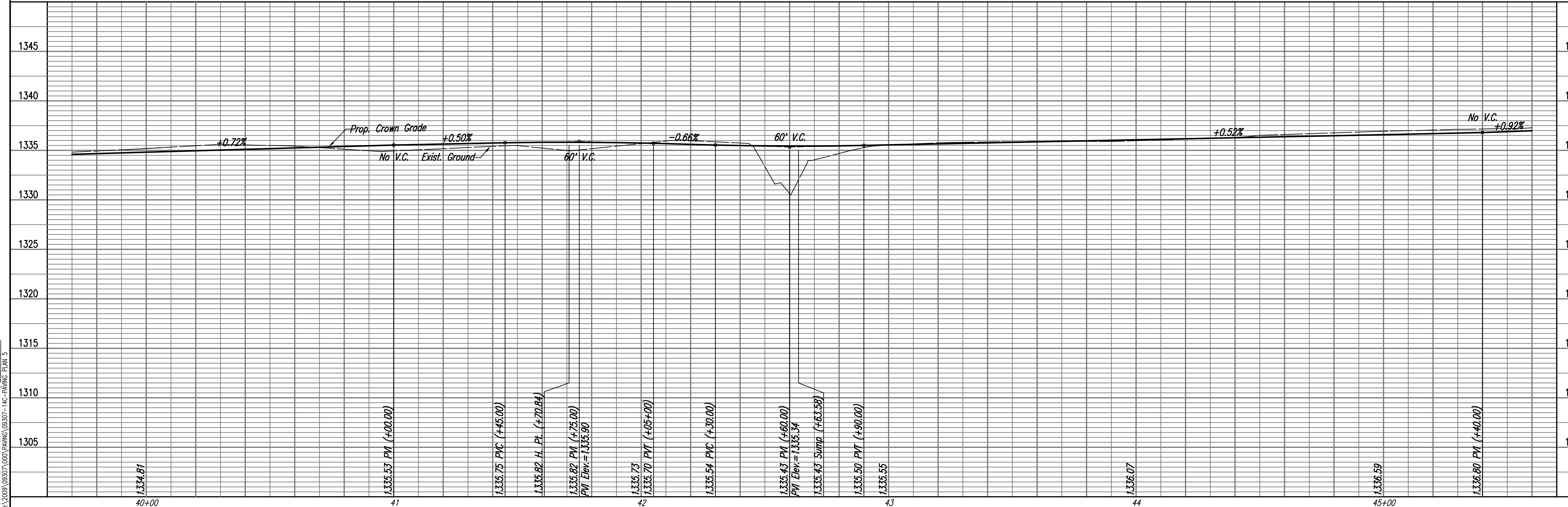
PLAN	CHECKED	DATE
	CHECKED	

PROFILE	CHECKED	DATE
	CHECKED	



JOINT LEGEND	
TYPE	DESCRIPTION
E.J.	EXPANSION JOINT
L.J.	LONGITUDINAL JOINT
T.J.	TRANSVERSE JOINT

See Sheet No. 18 for Joint Details
 ANY DEVIATIONS FROM THE JOINTING PLAN MUST BE APPROVED BY THE ENGINEER.



Drawn: 01-18-2011 4:50:00 PM by BIS
 Plot Scale: 1/20 01-18-2011 5:58:45 PM by BILL J. SEJOSON
 G:\2009\09307\000\PAVING\09307-14C-PAVING PLAN 5

HEARTLAND PREPAREDNESS CENTER
 PAVING AND DRAINAGE IMPROVEMENTS
ACCESS ROAD
 STA. 40+00 TO STA. 45+50
 JAMES L. ARMOUR, P.E. - CITY ENGINEER
 CITY OF WICHITA PROJ. NO. 472-84898

Professional Engineering Consultants, P.A.
 309 S. TOPEKA, WICHITA, KANSAS 67202
 316-262-2291 • FAX 316-262-3003
 Job No. 35-09307 Date December 2009
 Drawn By BUS