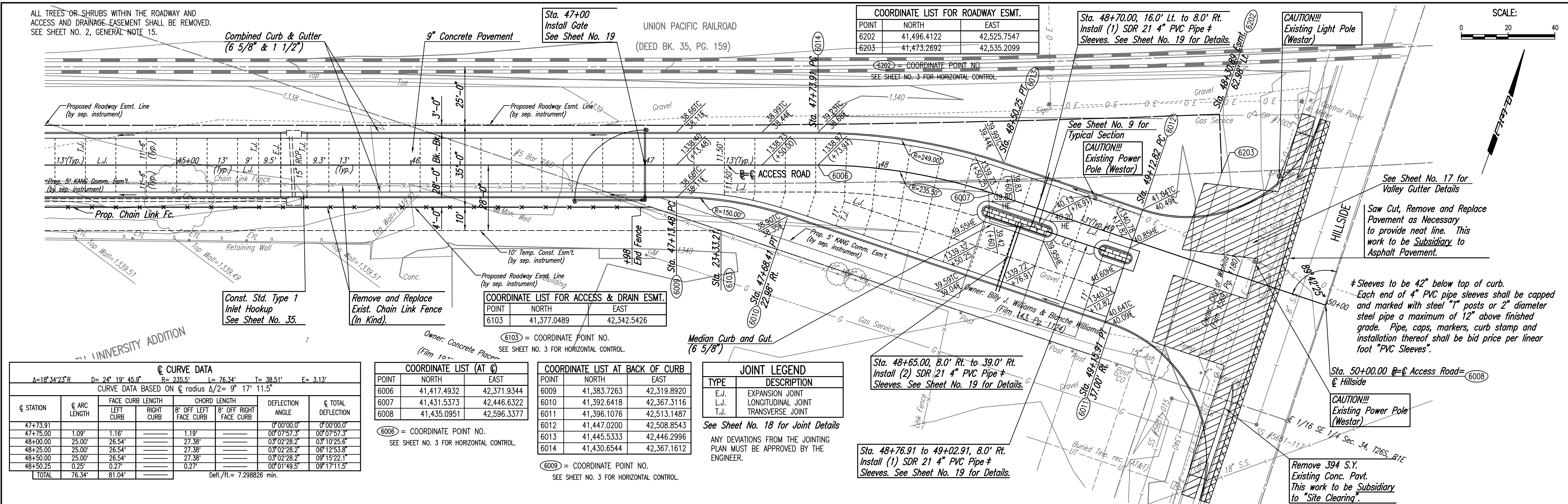
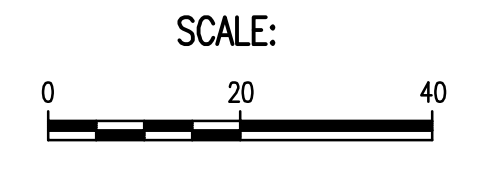


ALL TREES OR SHRUBS WITHIN THE ROADWAY AND ACCESS AND DRAINAGE EASEMENT SHALL BE REMOVED. SEE SHEET NO. 2, GENERAL NOTE 15.



COORDINATE LIST FOR ROADWAY ESMT.

POINT	NORTH	EAST
6202	41,496.4122	42,525.7547
6203	41,473.2692	42,535.2099

COORDINATE LIST FOR ACCESS & DRAIN ESMT.

POINT	NORTH	EAST
6103	41,377.0489	42,342.5426

COORDINATE LIST (AT C)

POINT	NORTH	EAST
6006	41,417.4932	42,371.9344
6007	41,431.5373	42,446.6322
6008	41,435.0951	42,596.3377

COORDINATE LIST AT BACK OF CURB

POINT	NORTH	EAST
6009	41,383.7263	42,319.8920
6010	41,392.6418	42,367.3116
6011	41,396.1076	42,513.1487
6012	41,447.0200	42,508.8543
6013	41,445.5333	42,446.2996
6014	41,430.6544	42,367.1612

JOINT LEGEND

TYPE	DESCRIPTION
E.J.	EXPANSION JOINT
L.J.	LONGITUDINAL JOINT
T.J.	TRANSVERSE JOINT

ANY DEVIATIONS FROM THE JOINTING PLAN MUST BE APPROVED BY THE ENGINEER.

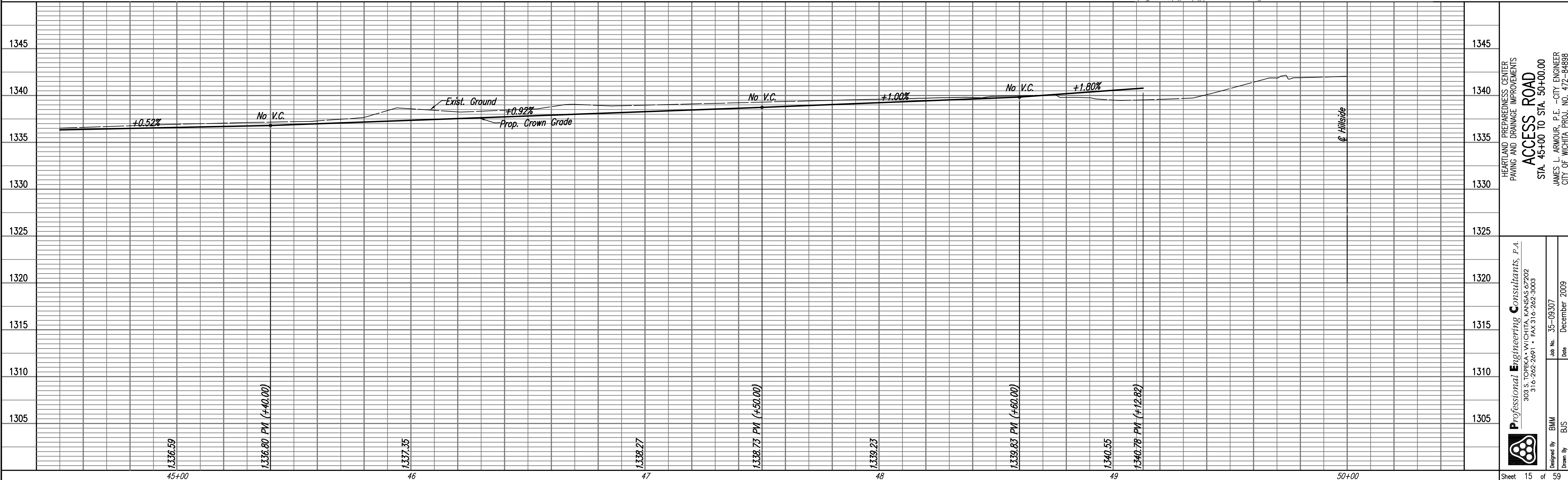
① CURVE DATA

A=18°34'23"R D=24°19'45.9" R=235.5' L=76.34' T=38.51' F=3.13'

CURVE DATA BASED ON ① radius Δ/2=9°17'11.5"

① STATION	① ARC LENGTH	FACE CURB LENGTH LEFT CURB	FACE CURB LENGTH RIGHT CURB	CHORD LENGTH	8' OFF LEFT FACE CURB	8' OFF RIGHT FACE CURB	DEFLECTION ANGLE	① TOTAL DEFLECTION
47+73.91							0°00'00.0"	0°00'00.0"
47+75.00	1.09'	1.16'		1.19'			0°07'57.3"	0°07'57.3"
48+00.00	25.00'	26.54'		27.38'			0°02'28.2"	0°12'25.6"
48+25.00	25.00'	26.54'		27.38'			0°02'28.2"	0°12'25.6"
48+50.00	25.00'	26.54'		27.38'			0°02'28.2"	0°15'22.1"
48+50.25	0.25'	0.27'		0.27'			0°01'49.5"	0°17'11.5"
TOTAL	76.34'	81.04'						

Defl./ft. = 7.298826 min.



PLAN	CHECKED	DATE
	CHECKED	

PROFILE	CHECKED	DATE
	CHECKED	

Drawn: 01-18-2011 4:51:01 PM by BIS
 Plot Scale: 1/20 01-18-2011 5:59:51 PM by BILL J. SEJOSON
 G:\2009\09307\000\PAVING\09307-15C-PAVING PLAN 6

HEARTLAND PREPAREDNESS CENTER
 PAVING AND DRAINAGE IMPROVEMENTS
ACCESS ROAD
 STA. 45+00 TO STA. 50+00.00
 JAMES L. ARMOUR, P.E. - CITY ENGINEER
 CITY OF WICHITA, PROJ. NO. 472-84898

Professional Engineering Consultants, P.A.
 309 S. TOPEKA AVE., SUITE 100, WICHITA, KANSAS 67202
 316-262-2291 • FAX 316-262-3003

Designed By: BMM
 Drawn By: BUS
 Job No.: 35-09307
 Date: December 2009