

Sta. 9+64.3 SWS Line No. 1
Const. 24" R.C. Headwall
Install 35.7 L.F. 24" RCP (N)
See Sheet No. 39.

Install 192 S.Y.
Heavy Stone Riprap
See Sheet No. 41.

Sta. 10+00.0 SWS Line No. 1=
Sta. 21+00.0 SWS Line No. 1A=
@ Access Road Sta. 22+25.00, 15.00' Rt.
Const. Std. Type 1 Curb Inlet
L=5'-0", W=3'-0"
Top Elev.=1329.14
Install 157.9 L.F. 18" RCP (NE)
Install 30.0 L.F. 15" RCP (NW)
See Sheet No. 35.

Sta. 11+57.9 SWS Line No. 1=
@ Access Road Sta. 23+82.09, 17.50' Rt.
Const. Precast Manhole
Dia.=4'-0"
Top Elev.=1330.00
Install 288.6 L.F. 18" RCP (NE)
See Sheet No. 37.

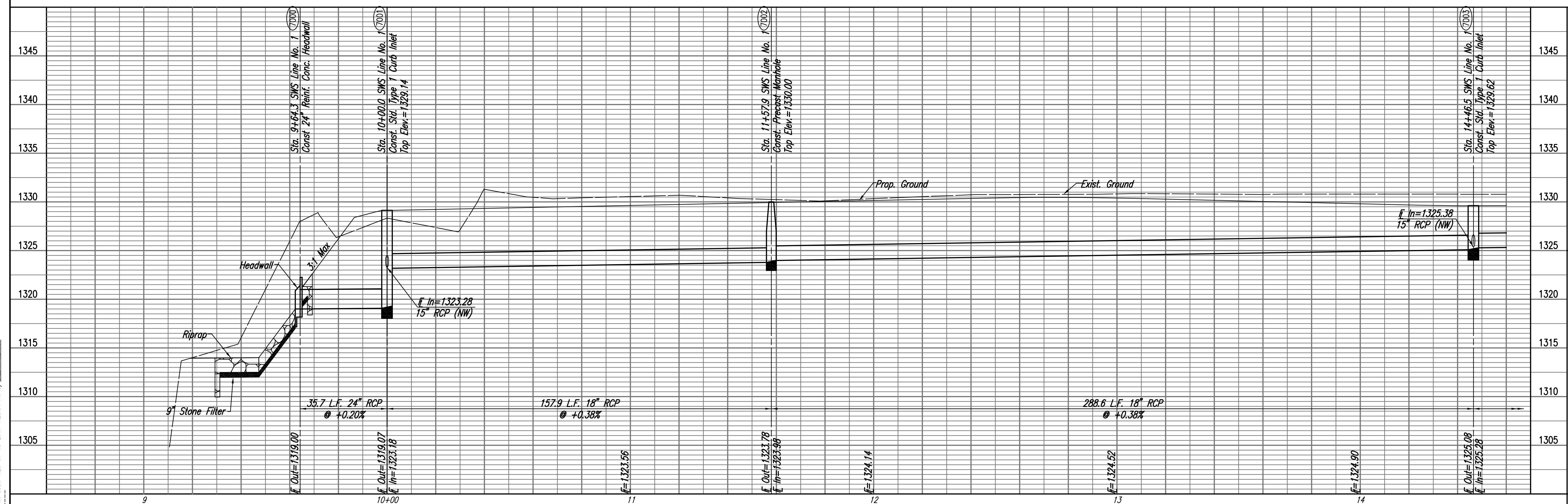
Sta. 14+46.5 SWS Line No. 1=
Sta. 22+00.0 SWS Line No. 1B=
@ Access Road Sta. 26+69.80, 15.00' Rt.
Const. Std. Type 1 Curb Inlet
L=5'-0", W=3'-0"
Top Elev.=1329.62
Install 254.1 L.F. 18" RCP (NE)
Install 30.0 L.F. 15" RCP (NW)
See Sheet No. 35.

| COORDINATE LIST | | |
|-----------------|-------------|-------------|
| POINT | NORTH | EAST |
| 7000 | 40,466.3263 | 39,995.9606 |
| 7001 | 40,502.0268 | 39,994.2870 |
| 7002 | 40,554.4851 | 40,143.2640 |
| 7003 | 40,680.5614 | 40,402.8336 |

7000 = COORDINATE POINT NO.
SEE SHEET NO. 3 FOR HORIZONTAL CONTROL

PLAN
CHECKED
DATE

PROFILE
CHECKED
DATE



Saved: 01-18-2011 1:24:55 PM by BIS
Plot Scale 1:20 01-18-2011 1:25:34 PM by BILL J. SEASON

HEARTLAND PREPAREDNESS CENTER
PAVING AND DRAINAGE IMPROVEMENTS
SWS LINE NO. 1
STA. 9+49.3 TO STA. 14+46.5
JAMES L. ARMOUR, P.E. - CITY ENGINEER
CITY OF WICHITA PROJ. NO. 472-84898

Professional Engineering Consultants, P.A.
308 S. TOPEKA, WICHITA, KANSAS 67202
316-262-2291 • FAX 316-262-3003
Designed By: BMM
Job No.: 35-09307
Date: December 2009
Drawn By: BUS
Sheet 28 of 59