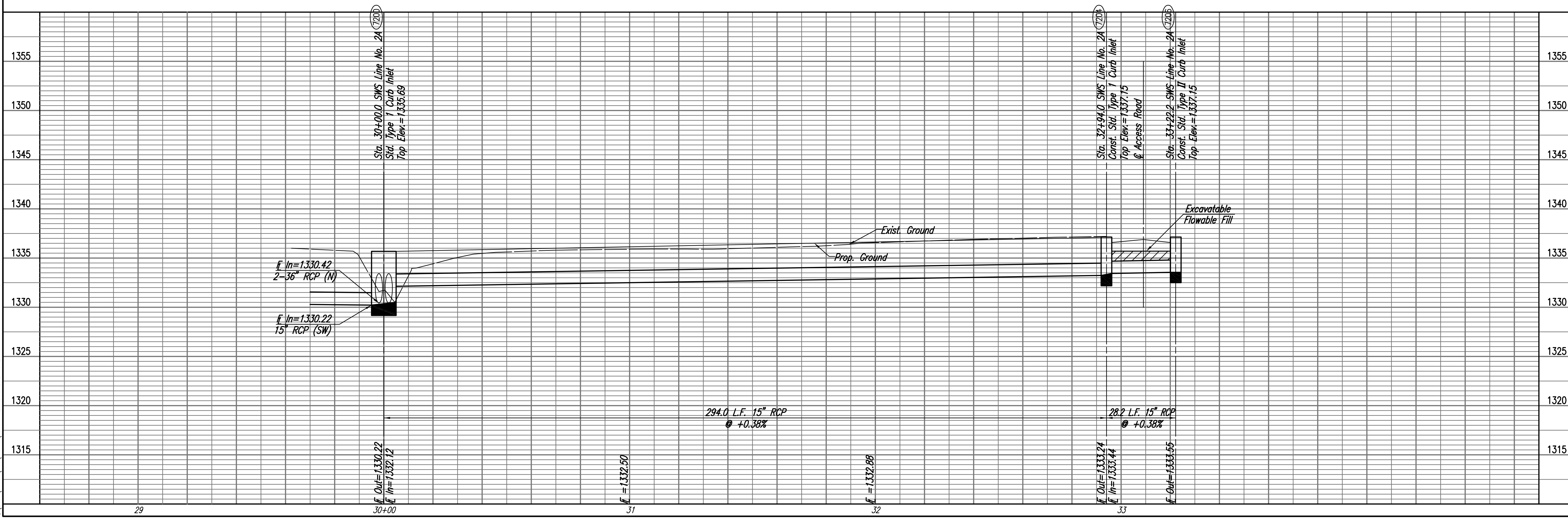
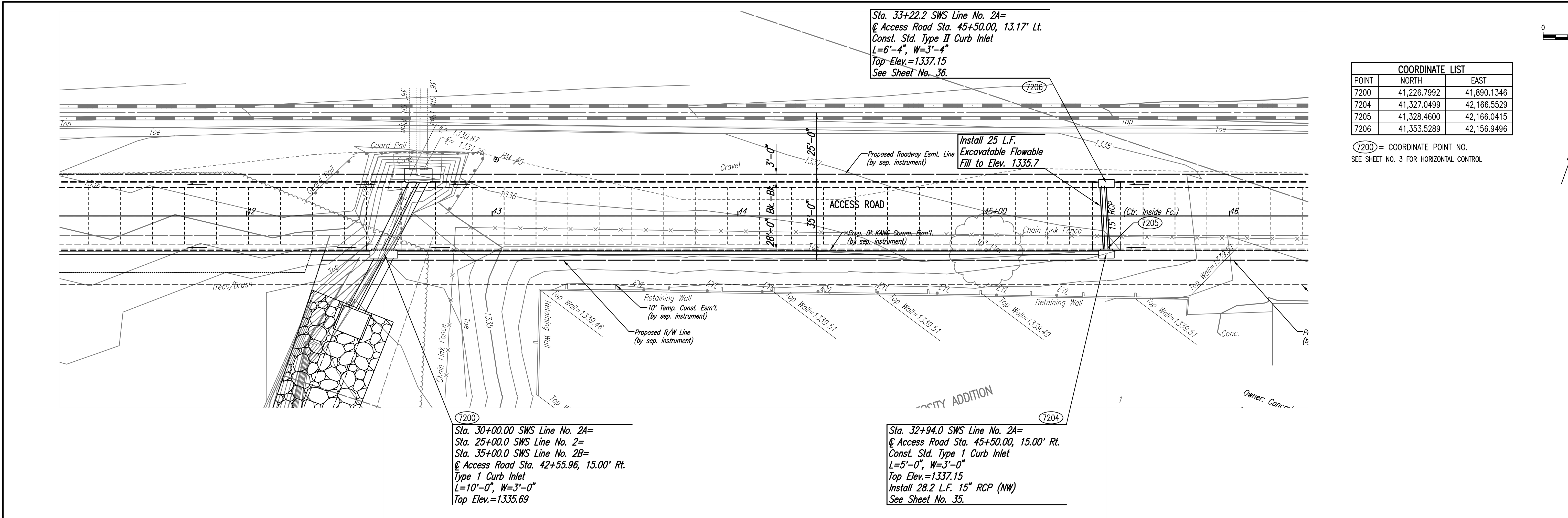


PLAN	CHECKED	DATE
	CHECKED	

PROFILE	CHECKED	DATE
	CHECKED	

Drawn 01-18-2011 12:12:03 PM by BJS
 Plot Scale 1:20 01-18-2011 12:12:30 PM by BILL J. SECKSON
 G:\2009\09307\000\PAVING\09307-32C-SWS LINE NO. 2A



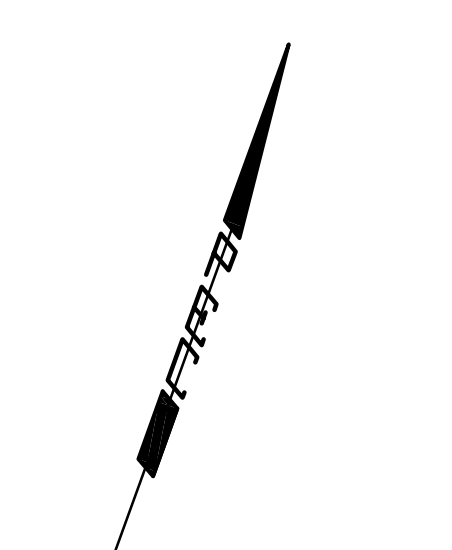
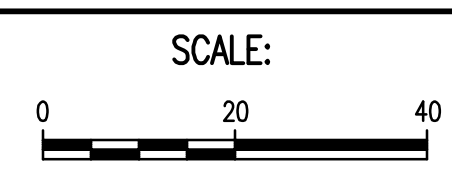
Sta. 33+22.2 SWS Line No. 2A=
 @ Access Road Sta. 45+50.00, 13.17' Lt.
 Const. Std. Type II Curb Inlet
 L=6'-4", W=3'-4"
 Top Elev.=1337.15
 See Sheet No. 36.

Sta. 30+00.00 SWS Line No. 2A=
 Sta. 25+00.0 SWS Line No. 2=
 Sta. 35+00.0 SWS Line No. 2B=
 @ Access Road Sta. 42+55.96, 15.00' Rt.
 Type 1 Curb Inlet
 L=10'-0", W=3'-0"
 Top Elev.=1335.69

Sta. 32+94.0 SWS Line No. 2A=
 @ Access Road Sta. 45+50.00, 15.00' Rt.
 Const. Std. Type 1 Curb Inlet
 L=5'-0", W=3'-0"
 Top Elev.=1337.15
 Install 28.2 L.F. 15" RCP (NW)
 See Sheet No. 35.

COORDINATE LIST		
POINT	NORTH	EAST
7200	41,226.7992	41,890.1346
7204	41,327.0499	42,166.5529
7205	41,328.4600	42,166.0415
7206	41,353.5289	42,156.9496

7200 = COORDINATE POINT NO.
 SEE SHEET NO. 3 FOR HORIZONTAL CONTROL



HEARTLAND PREPAREDNESS CENTER
 PAVING AND DRAINAGE IMPROVEMENTS
SWS LINE NO. 2A
 STA. 30+00.00 TO STA. 33+22.2

Professional Engineering Consultants, P.A.
 303 S. TORRENS, WICHITA, KANSAS 67202
 316-262-2291 • FAX 316-262-3003

Designed By: BMM
 Drawn By: BJS
 Job No.: 35-09307
 Date: December 2009