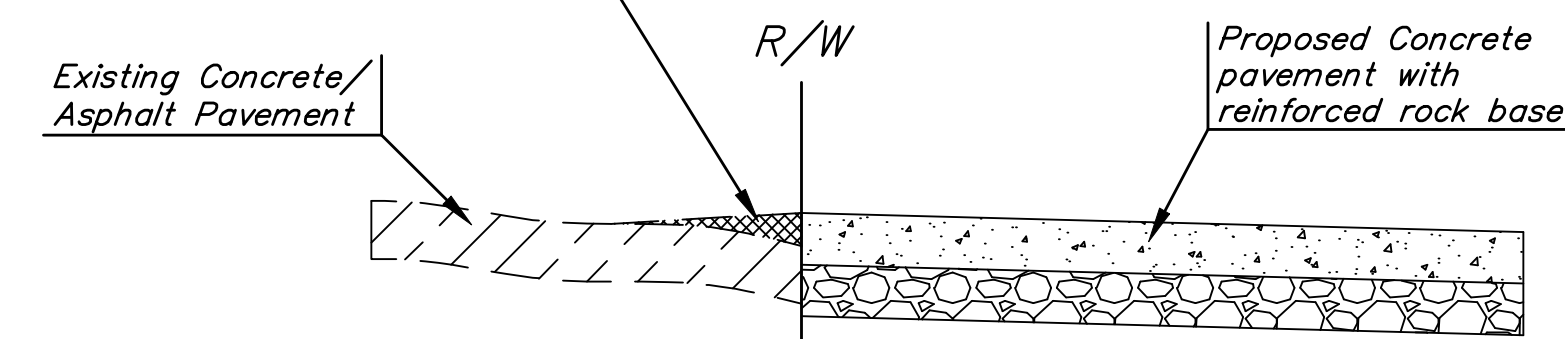


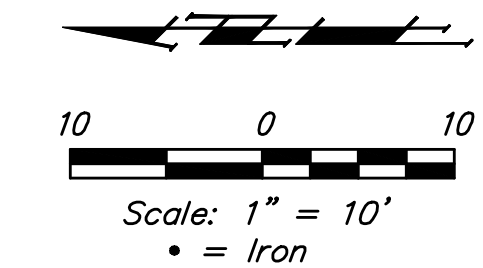
BENCHMARKS:

1. RR Spike on West Side of PP on the Southwest corner of Lewis and the Alley between Greenwood and Ellis.
Elev. = 1293.02 NAVD 88
2. "C" cut on top of curb at the South end of the proposed alley.
Elev. = 1292.25 NAVD 88

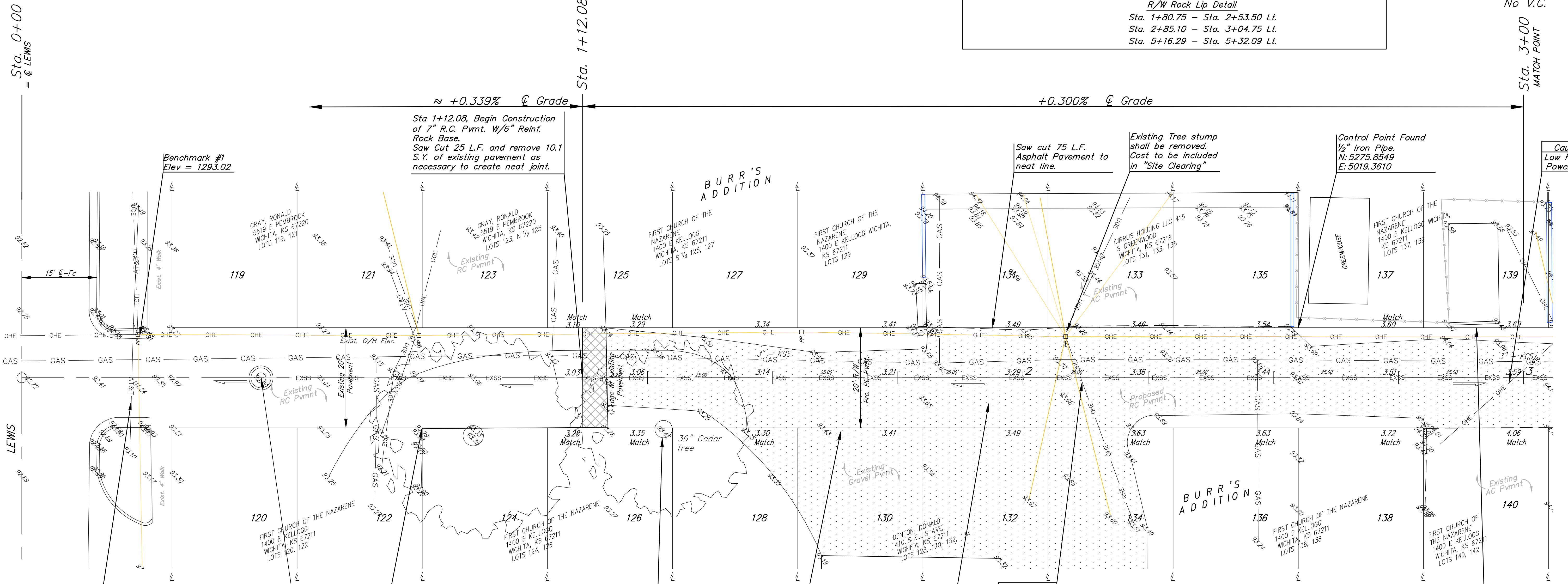
Where lip exists between existing and proposed pavement.
Contractor shall fill the void with compacted crushed rock.
Cost shall be incidental to "Crushed Rock Base 6", Reinforced"



R/W Rock Lip Detail
Sta. 1+80.75 - Sta. 2+53.50 Lt.
Sta. 2+85.10 - Sta. 3+04.75 Lt.
Sta. 5+16.29 - Sta. 5+32.09 Lt.



P.V.I.
Elev. = 1293.59
No V.C.



Sta 1+12.08, Begin Construction of 7" R.C. Pvmnt. W/6" Reinf. Rock Base.
Saw Cut 25 L.F. and remove 10.1 S.Y. of existing pavement as necessary to create neat joint.

Saw cut 75 L.F. Asphalt Pavement to neat line.

Existing Tree stump shall be removed. Cost to be included in "Site Clearing"

Control Point Found 1/2" Iron Pipe. N: 5275.8549 E: 5019.3610

Caution! Low Hanging Power Lines

Caution! Low Hanging Power Lines

Control Point Found "+" cut in concrete pavement at end of curb. N: 5450.1192 E: 5000.0000

Contractor shall remove tree. Cost of removal shall be included in "Site Clearing."

Contractor shall regrade existing gravel as necessary to match proposed RC pavement. Cost to be included in "Site Restoration."

Construct 7" Reinforced Concrete Pavement w/6" Crushed Rock Base

Caution! Low Hanging Power Lines

Saw cut 25.0 L.F. existing concrete pavement & remove existing curb as necessary for construction.

Contractor shall place an 1/2" expansion joint around all Utility Poles within project R/W. See Expansion Joint Detail (Sheet 2).

Contractor shall saw cut adjacent asphalt and concrete pavement (Full Depth) to neat line if not already an existing neat construction joint. All costs for Saw Cutting shall be included in the measured quantity bid item "Sawcut Existing Pavement." Material removal & disposal shall be incidental to this bid item.

Contractor shall install one construction entrance per detail (Sheet 8).

HATCH LEGEND

	Existing Gravel Pavement
	Existing RC Pvmnt. To Be Removed & Replaced
	Existing Asph. Pvmnt. To Be Removed

Baughman Alley Paving
Alley Improvements

Alley Between Greenwood & Ellis

Baughman Company, P.A. 315 Ellis St. Wichita, KS 67211 P 316-262-7271 F 316-262-0149
ENGINEERING | SURVEYING | PLANNING | LANDSCAPE ARCHITECTURE

PROJECT NUMBER	DESIGN AEG	DRAWN TNT
REVISIONS:	APPROVED AEG	DATE 1/14/2011
	SCALE Noted	
	SHEET	3 OF 10

1009E546