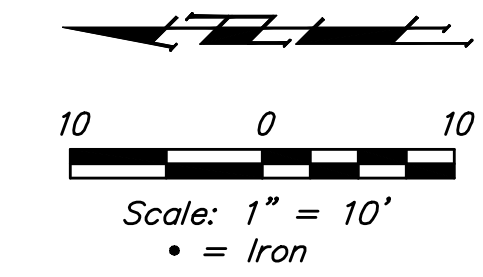


BENCHMARKS:

1. RR Spike on West Side of PP on the Southwest corner of Lewis and the Alley between Greenwood and Ellis.
Elev. = 1293.02 NAVD 88
2. "I" cut on top of curb at the South end of the proposed alley.
Elev. = 1292.25 NAVD 88

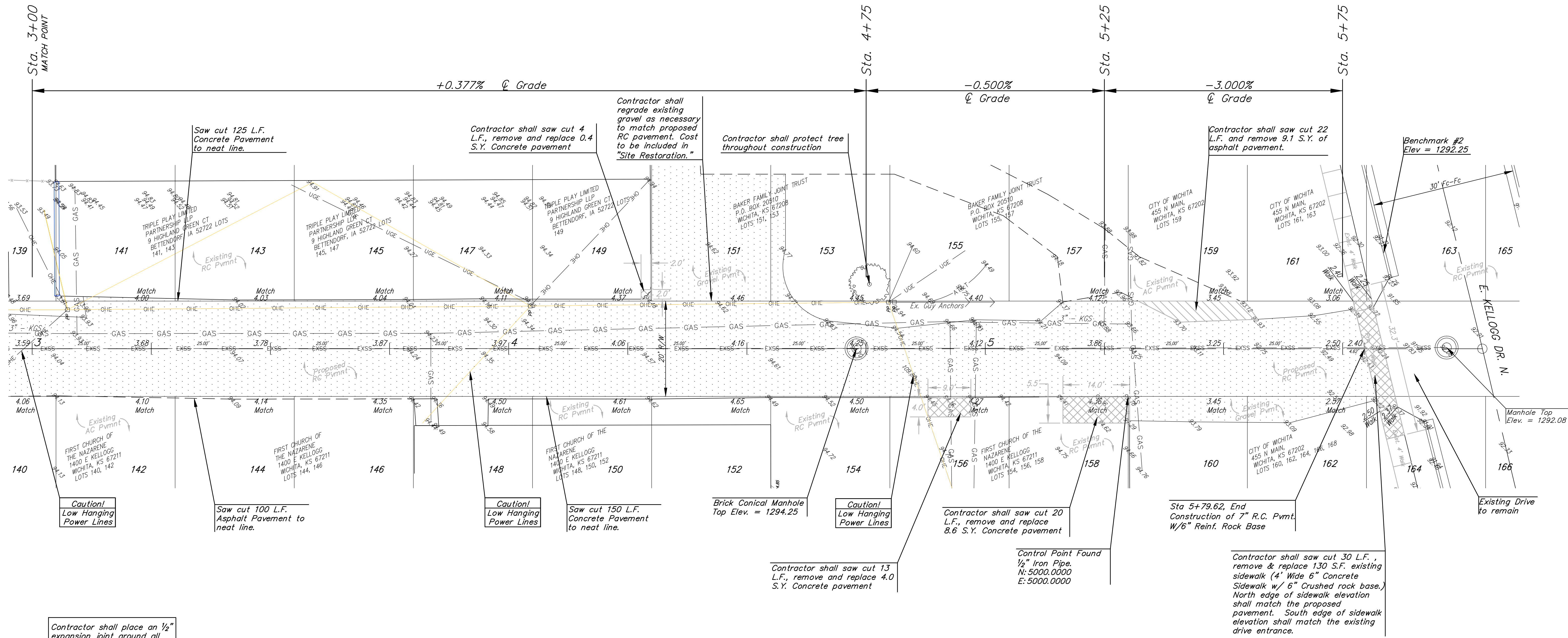


P.V.I.
Elev. = 1293.59
No V.C.

P.V.I.
Elev. = 1294.25
No V.C.

P.V.I.
Elev. = 1294.00
50' V.C.

P.V.I.
Elev. = 1292.50
No V.C.



Contractor shall place an 1/2" expansion joint around all Utility Poles within project R/W. See Expansion Joint Detail (Sheet 2).

Contractor shall saw cut adjacent asphalt and concrete pavement (Full Depth) to neat line if not already an existing neat construction joint. All costs for Saw Cutting shall be included in the measured quantity bid item "Sawcut Existing Pavement." Material removal & disposal shall be incidental to this bid item.

HATCH LEGEND

	Existing Gravel Pavement
	Existing RC Pvmnt. To Be Removed & Replaced
	Existing Asph. Pvmnt. To Be Removed

	Alley Between Greenwood & Ellis	
	Alley Paving Alley Improvements	
Baughman Company, P.A. 315 Ellis St. Wichita, KS 67211 P 316-262-7771 F 316-262-0149 ENGINEERING SURVEYING PLANNING LANDSCAPE ARCHITECTURE		
PROJECT NUMBER	DESIGN	DRAWN
	AEG	TNT
REVISIONS:	APPROVED	DATE
	AEG	1/14/2011
	SCALE	
	Noted	
	SHEET	
	4 OF 10	
1009E546		