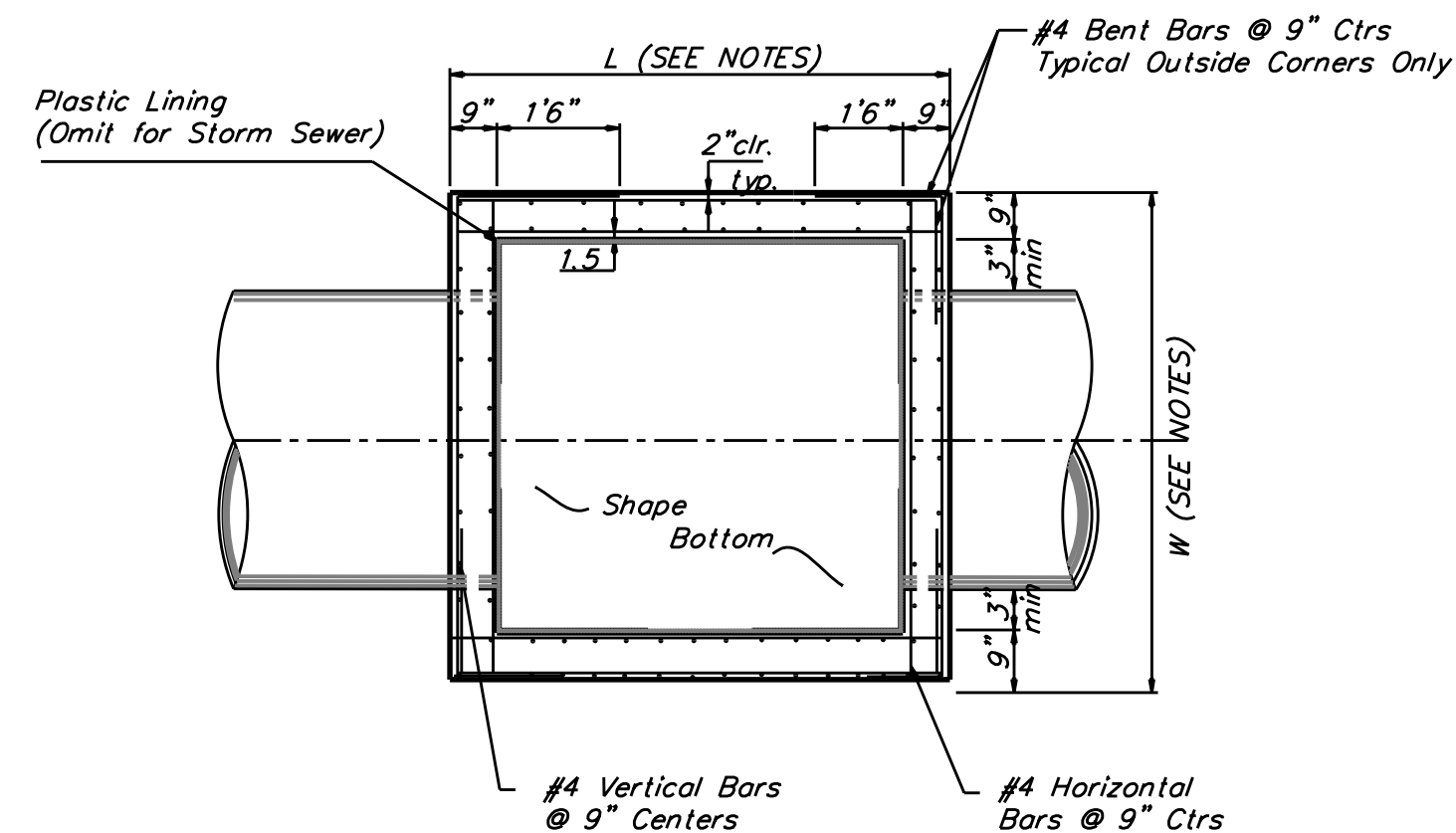


R.C.P. CONNECTION DETAIL

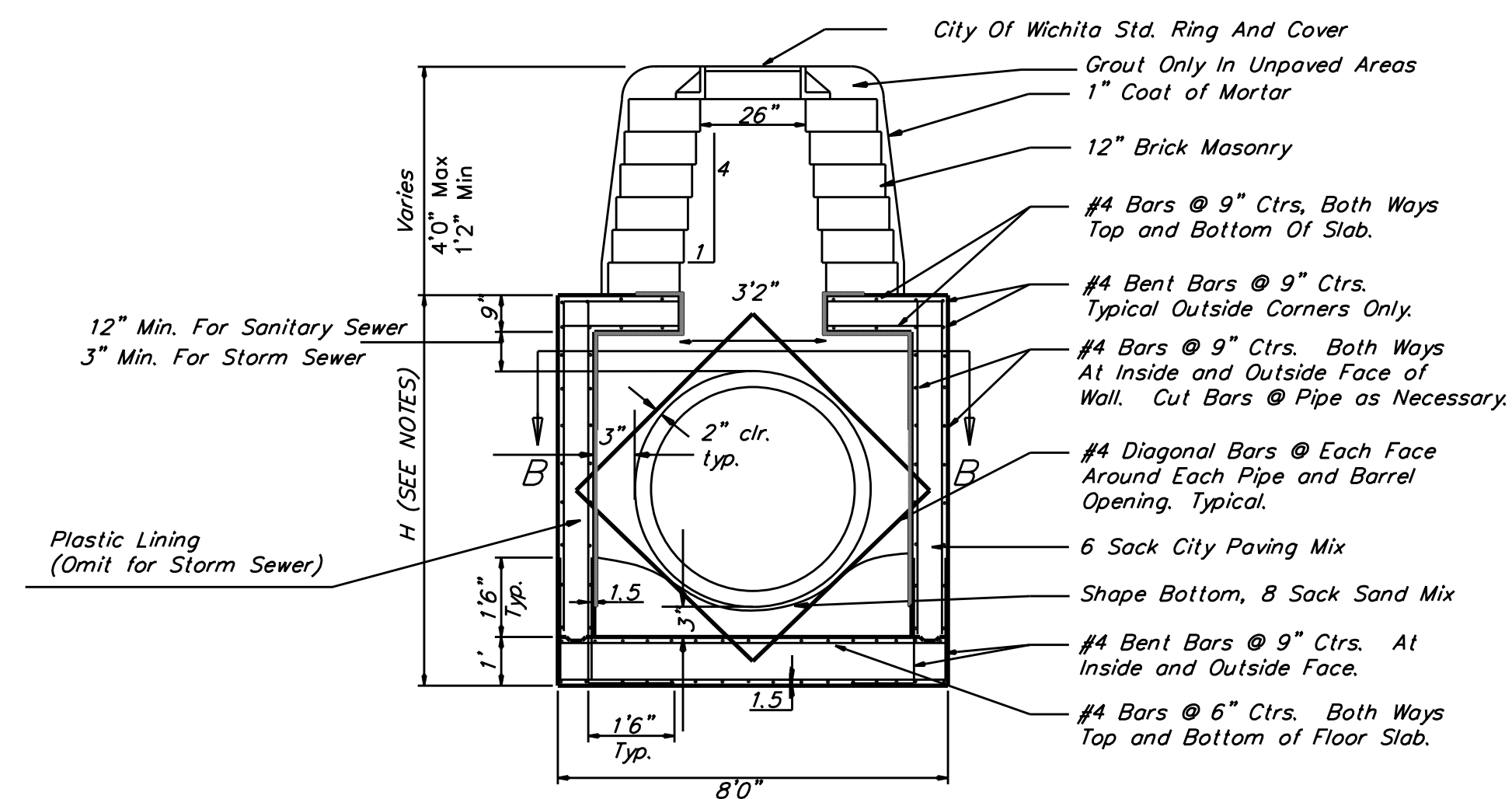
SANITARY SEWER ONLY



TOP VIEW

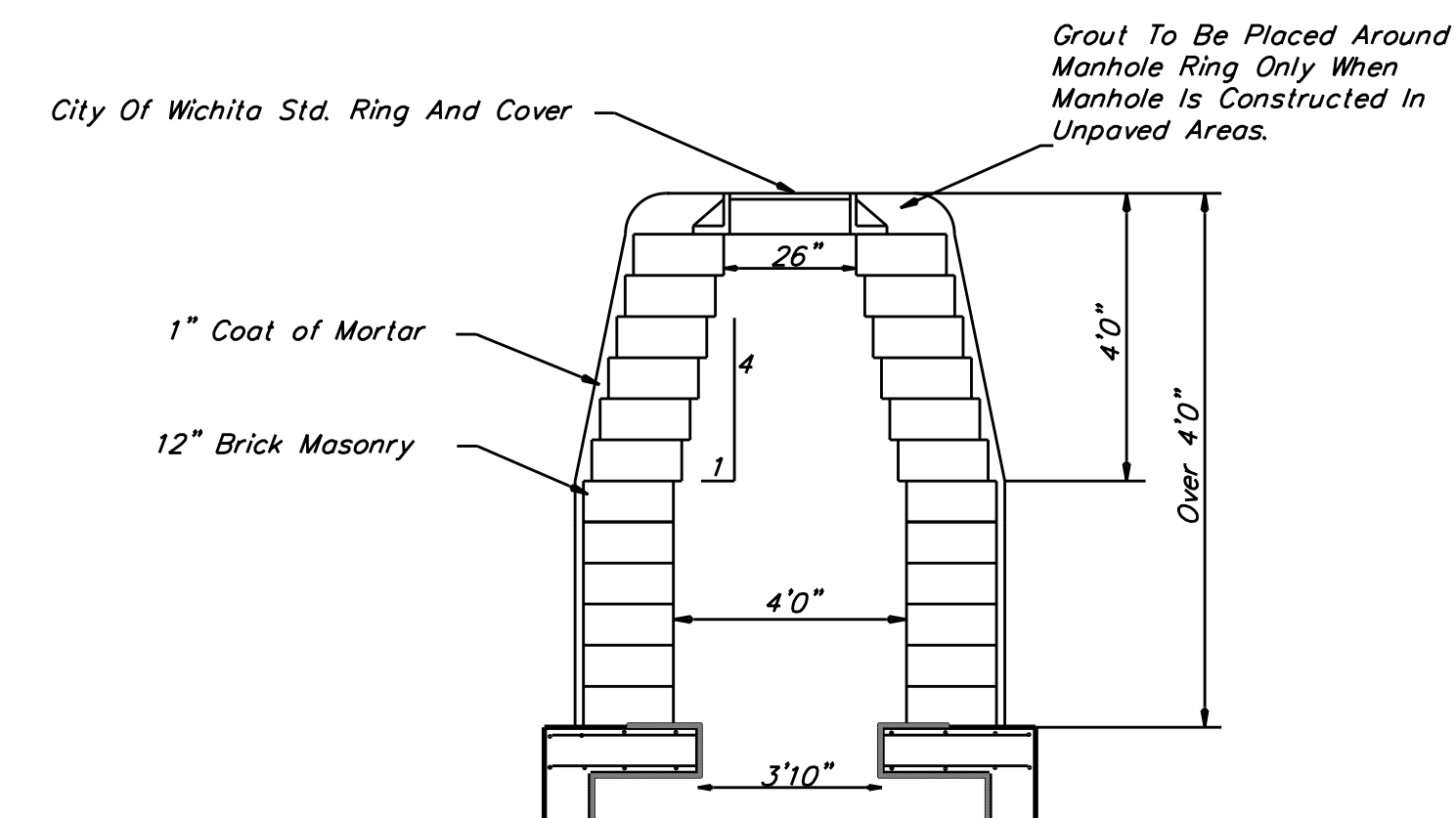
GENERAL NOTES:

- MORTAR USED IN MASONRY CONSTRUCTION SHALL CONTAIN 8 SACKS OF CEMENT PER CUBIC YARD. CONCRETE USED IN MANHOLE WALLS AND BASES SHALL CONFORM TO THE REQUIREMENTS FOR CONCRETE PAVEMENT CONSTRUCTION AS SPECIFIED IN THE CITY STANDARD PAVING SPECIFICATIONS, USING CITY CONCRETE PAVING MIX WITHOUT AIR ENTRAINING ADMIXTURE. MORTAR SHALL BE PLACED AROUND THE MANHOLE RING AS SHOWN ON THE DRAWINGS WHEN MANHOLES ARE CONSTRUCTED IN UNPAVED AREAS. COMPLETED MANHOLE SHALL BE WITHOUT LEAKS AND WATER TIGHT.
- THE FLOORS OF ALL MANHOLES SHALL BE SHAPED WITH FLOW CHANNELS SUCH THAT THE MANHOLES WILL BE SELF CLEANING. USING 8-SACK SAND MIX CONCRETE. FLOW CHANNELS SHALL BE FORMED TO MATCH THE BOTTOM HALVES OF THE INFLOWING PIPES AND THE OUTFLOWING PIPE. MANHOLE FLOORS SHALL HAVE SLOPES OF 3 INCHES PER FOOT IN THE AREAS OUTSIDE OF THE FLOW CHANNELS SLOPED TOWARD THE FLOW CHANNELS.
- MANHOLE COVER CASTINGS AND MANHOLE FRAME CASTINGS SHALL CONFORM TO THE REQUIREMENTS AS INDICATED IN THE STANDARD SPECIFICATIONS AND AS SHOWN IN THE STANDARD DETAIL DRAWING.
- THE ENDS OF ALL PIPES IN MANHOLES SHALL BE CUT OFF FLUSH WITH THE INSIDE FACE OF MANHOLE WALL.
- "L" & "W" SHALL BE AS SPECIFIED IN THE PLANS.



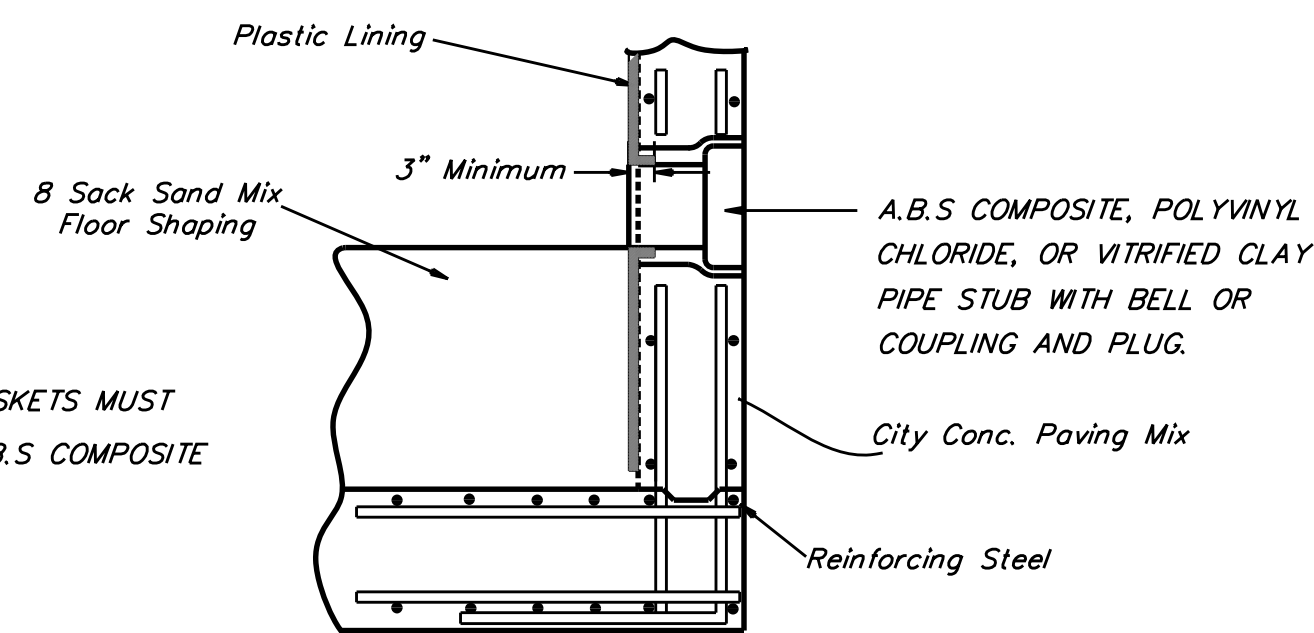
REINFORCED CONCRETE MANHOLE

MANHOLE STACK 2.33' TO 4'0"



REINFORCED CONCRETE MANHOLE

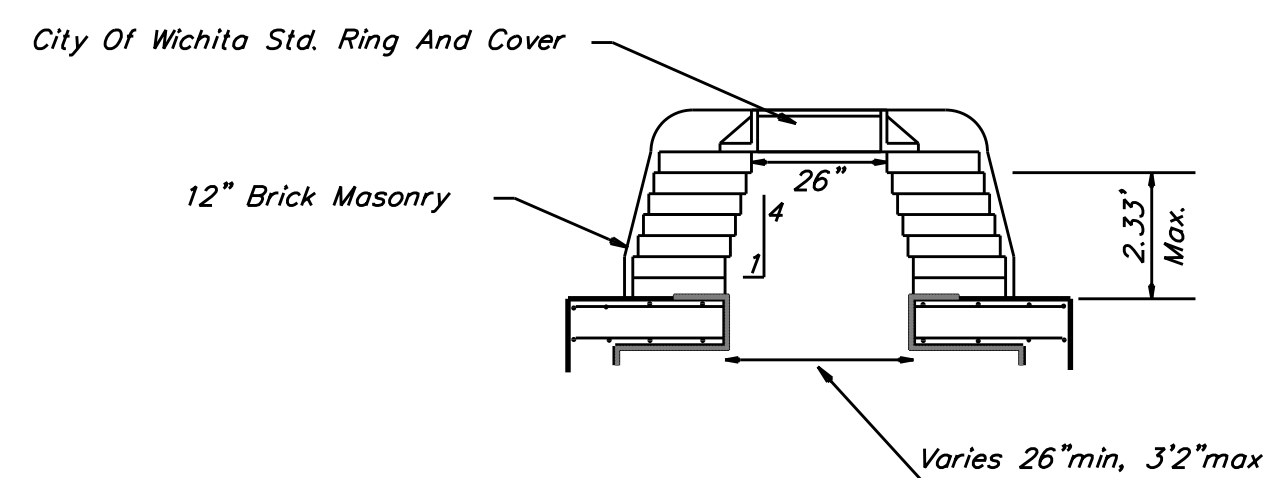
MANHOLE STACK OVER 4'0"



NOTE: WATERSHOP GASKETS MUST BE USED WITH A.B.S. COMPOSITE OR P.V.C. PIPE.

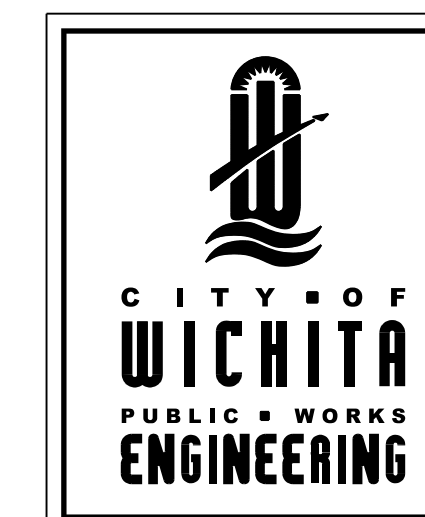
PIPE STUB DETAIL

SANITARY SEWER ONLY



REINFORCED CONCRETE MANHOLE

MANHOLE STACK LESS THAN 2.33'



REINFORCED CONCRETE MANHOLE			
CITY ENGINEER			
JAMES L. ARMOUR, P.E., L.S.			
PROJECT NUMBER	OCA NUMBER	DATE	
XXX-XXXX	XXXXXX	MM/YY	
CITY ENGINEER'S OFFICE		DESIGN	DRAWN
CITY HALL - SEVENTH FLOOR 455 NORTH MAIN STREET WICHITA, KANSAS 67202-1620 (316) 268-4500 (316) 268-4114 FAX		ABC	DEF
		SHEET	
		X OF X	

REV. 1/05/01, MCG

Reinforced Concrete MH.DWG

Rev.	Date	By	Description

Designer: BLB
Drawn By: JGF
Date: January 5, 2011
Revision No.

12469 SW 15th
Bentley, KS 67017
O: 316-778-2215
F: 316-778-1204

Client: STORMWATER MANAGEMENT CITY OF WICHITA, KANSAS

HARVEY'S WALNUT GROVE ADDITION
WICHITA, KANSAS

R. C. MANHOLE DETAILS

JAMES ARMOUR, P.E. - CITY ENGINEER
Project No. 468-84721 OCA No. 133116

Drawing No.	C201
Project No.	462

Y:\2010\462_COW_North Hydraulic SWS\Sheets\462_C201_R.C. Manhole Details.dgn