



Remove and replace a portion of the private service laterals for six east-facing properties, from the tap on the new sanitary sewer main, to the east side of the storm water sewer trench. Refer to the storm water sewer plans being bid with this project. Cascade couplings will be required where connecting to VCP.

Sanitary Sewer televising logs have been provided for the identification of sewer service locations on the existing sewer pipe.

Sta 5+47  
SS MH # 5549-445  
Abandon Manhole  
(per City Spec)  
Approx MH depth = 4.6 ft

Sta 4+67  
SS MH # 5549-445 (re-use MH number)  
Construct Manhole  
(abandonment of 80 lf of pipe to the north shall be incidental to the project)

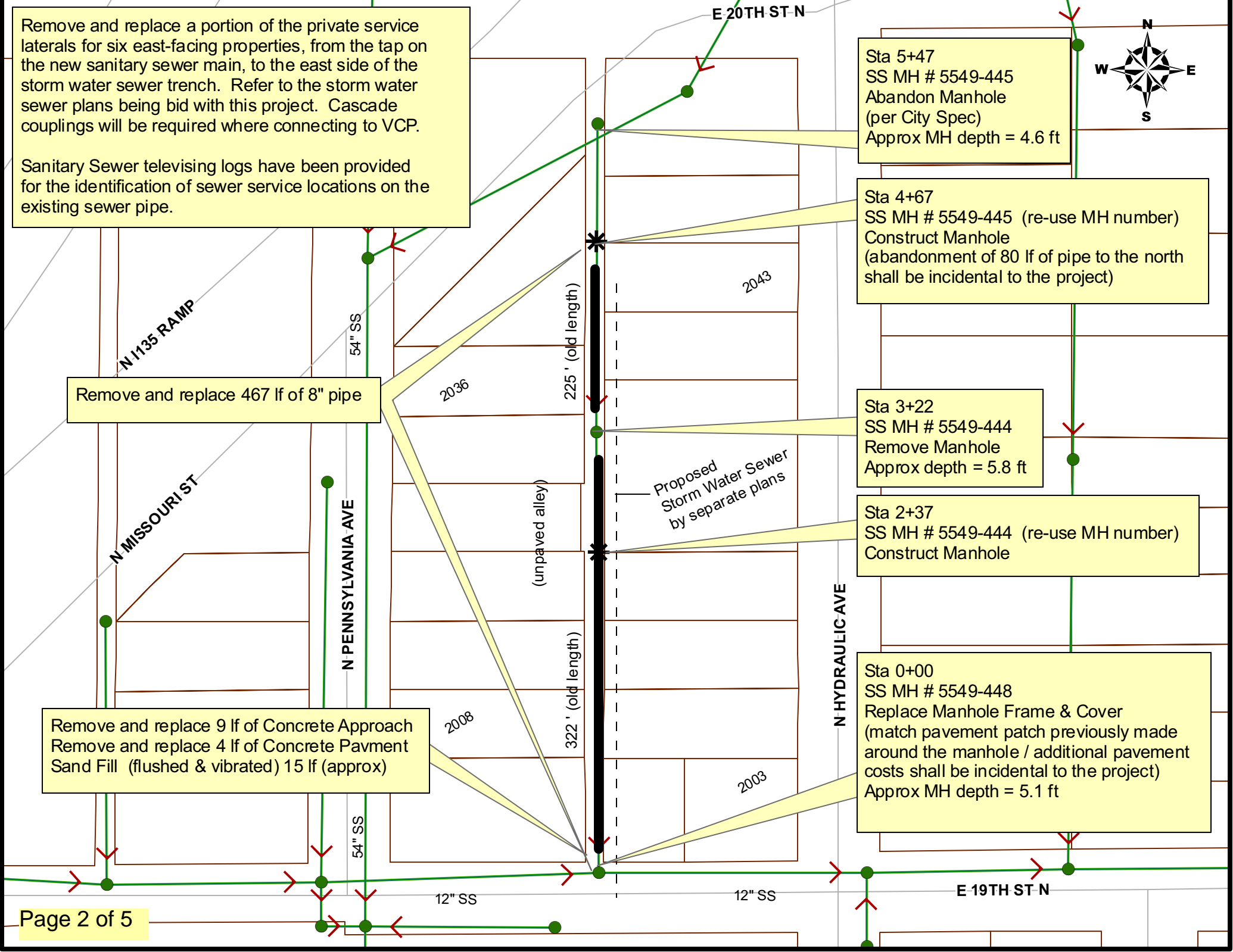
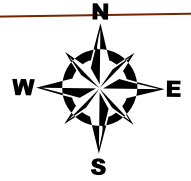
Sta 3+22  
SS MH # 5549-444  
Remove Manhole  
Approx depth = 5.8 ft

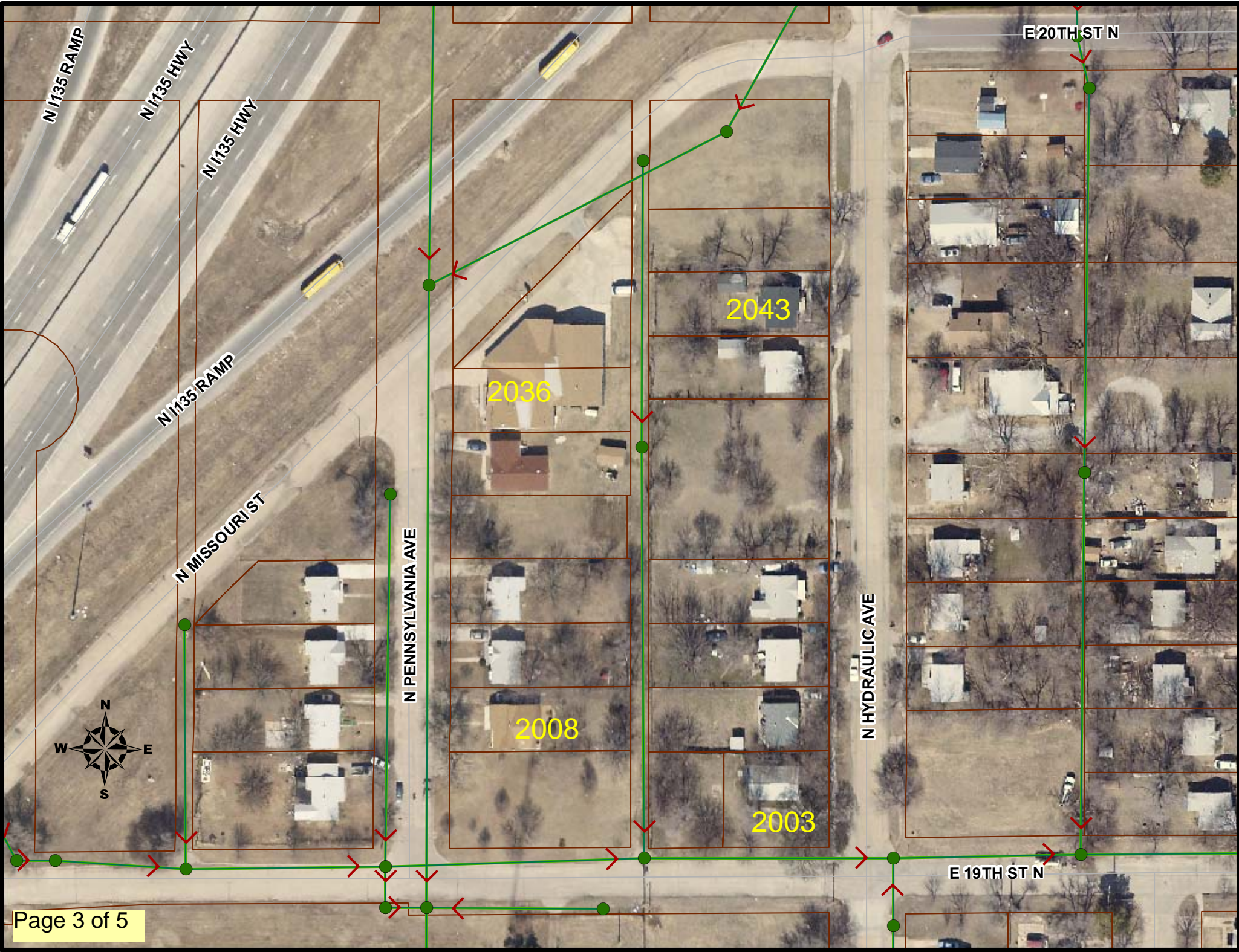
Sta 2+37  
SS MH # 5549-444 (re-use MH number)  
Construct Manhole

Sta 0+00  
SS MH # 5549-448  
Replace Manhole Frame & Cover  
(match pavement patch previously made around the manhole / additional pavement costs shall be incidental to the project)  
Approx MH depth = 5.1 ft

Remove and replace 467 lf of 8" pipe

Remove and replace 9 lf of Concrete Approach  
Remove and replace 4 lf of Concrete Pavement  
Sand Fill (flushed & vibrated) 15 lf (approx)







**Pipe Information**

**US Manhole**

**DS Manhole**

5549-445

5549-444

**Inspection Information**

Date Inspected	Crew	Weather	Surface Condition	Dyed Test	% Full
11/17/2010	694	Rainy	Trees & Fences	No	

Generated on Tuesday, 11/30/2010 at 07:59 AM by the PipeTech® TV inspection system.

Ftg.	Description	Svc Address	Location	Comment
<b>0.0</b>	<b>US Manhole 5549-445 / Located in grass at south edge of the curb, visible</b>			
7.4	Point Repair Starts – PVC pipe begins / offset			
19.9	Point Repair Ends – PVC pipe ends / severely offset and sits in a sag			
35.9	Wye Service West / APPEARS ABANDON			
39.1	Sealed Off Wye			
63.5	Sealed Off Wye			
67.1	Sealed Off Wye ROOTS			
<b>88.1</b>	<b>Wye Service West / 2036 NORTH PENNSYLVANIA / roots</b>			
91.0	Sealed Off Wye			
107.9	Broken Pipe			
111.4	Broken Pipe			
118.7	Sealed Off Wye			
<b>118.7</b>	<b>Wye Service East / 2043 NORTH HYDRAULIC Offset outside of the main</b>			
<b>140.0</b>	<b>Wye Service West / 2026 NORTH PENNSYLVANIA Not sure if this is active</b>			
143.1	Sealed Off Wye			
153.0	Broken Pipe			
157.3	Broken Pipe			
160.1	Broken Pipe			
163.1	Crack-Horizontal			
164.4	Sealed Off Wye			
<b>167.6</b>	<b>Wye Service East / 2037 NORTH HYDRAULIC / roots</b>			
172.0	Crack-Horizontal			
175.3	Broken Pipe			
178.4	Broken Pipe 12 to 12			
<b>188.8</b>	<b>Break-In Conn West / 2036 NORTH PENNSYLVANIA / PVC tap</b>			
191.9	Sealed Off Wye			
<b>208.6</b>	<b>Break-In Conn West / 2030 N PENNSYLVANIA</b>			
216.4	Sealed Off Wye			
219.6	Sealed Off Wye			
<b>225.0</b>	<b>DS Manhole 5549-444</b>			



Pipe Information

US Manhole

DS Manhole

5549-444

5549-448

Inspection Information

Date Inspected	Crew	Weather	Surface Condition	Dyed Test	% Full
11/17/2010	694	Rainy	Trees & Fences	No	

Ftg.	DescriptionSvc	Address	Location	Comment
------	----------------	---------	----------	---------

**0.0 US Manhole 5549-444 / 2030 NORTH PENNSYLVANIA**

**17.9 Wye Service West / 2020 NORTH PENNSYLVANIA / roots**

20.7 Sealed Off Wye ROOTS

42.3 Sealed Off Wye ROOTS

45.0 Sealed Off Wye ROOTS

**66.5 Wye Service West / 2020 NORTH PENNSYLVANIA / APPEARS ABANDONED?**

69.5 Sealed Off Wye ROOTS

90.9 Sealed Off Wye ROOTS

94.0 Sealed Off Wye ROOTS

**118.5 Wye Service West / 2014 NORTH PENNSYLVANIA / roots**

**121.3 Wye Service East / 2015 NORTH HYDRAULIC / roots**

142.7 Sealed Off Wye ROOTS

145.6 Sealed Off Wye ROOTS

**167.0 Wye Service West / 2008 NORTH PENNSYLVANIA / roots**

**169.9 Wye Service East / 2009 NORTH HYDRAULIC / roots**

191.5 Sealed Off Wye ROOTS

194.6 Sealed Off Wye ROOTS

**219.1 Wye Service West / 2002 NORTH PENNSYLVANIA**

**221.9 Wye Service East / 2003 NORTH HYDRAULIC / roots**

243.4 Sealed Off Wye ROOTS

246.7 Sealed Off Wye ROOTS

**252.6 Break-In Conn West / 2002 NORTH PENNSYLVANIA / APPEARS ABANDON?**

266.3 Other POINT REPAIR MADE

**268.0 Wye Service West / 2002 NORTH PENNSYLVANIA / VACANT LOT**

**270.9 Wye Service East / 2003 NORTH HYDRAULIC**

292.1 Sealed Off Wye ROOTS

295.3 Sealed Off Wye

**322.8 DS Manhole 5549-448 / in street / infiltration from leaking manhole cover**