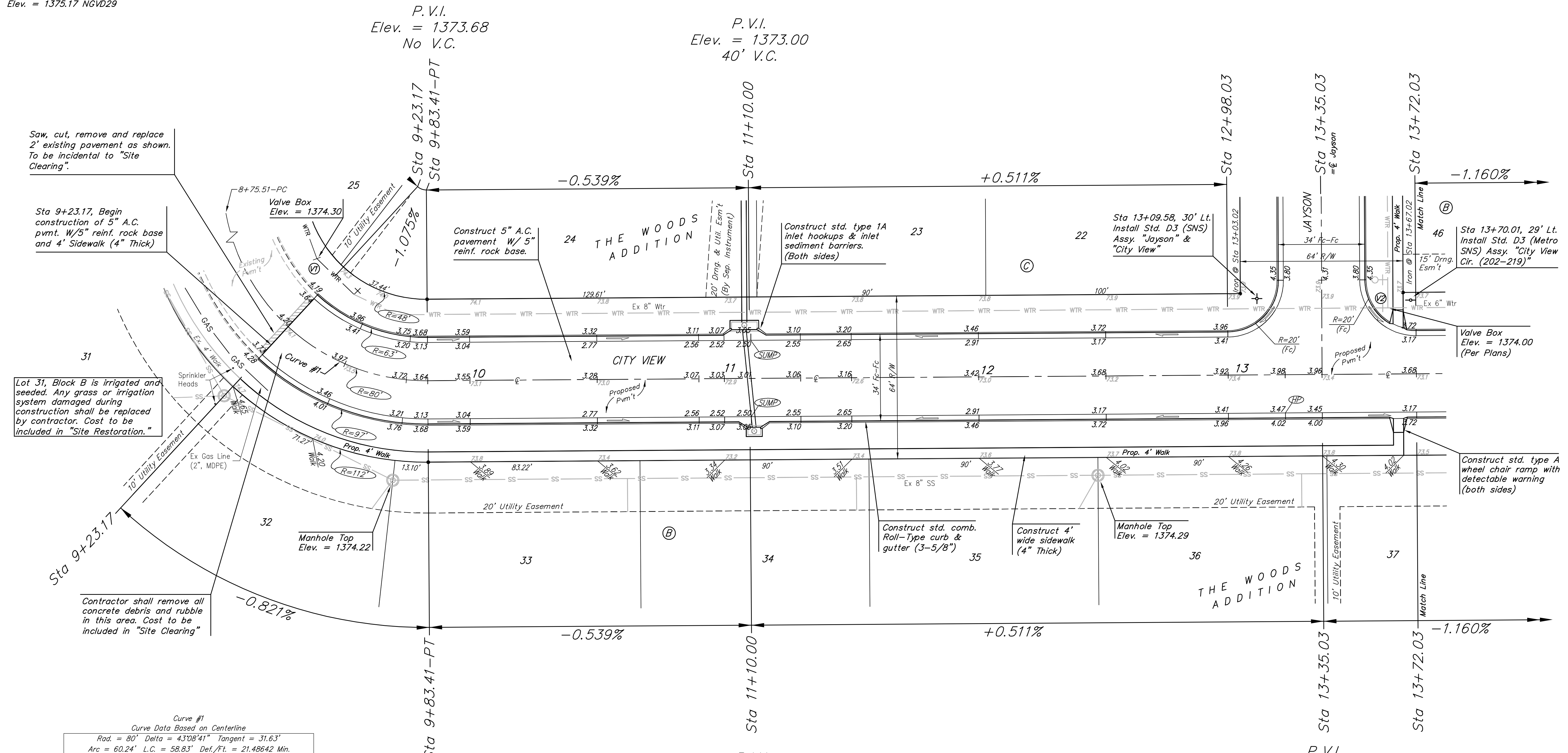
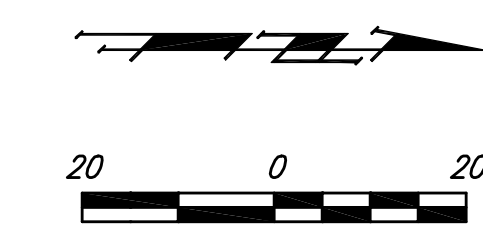


BENCHMARK:

BM #1: "□" Cut in top of the NE curb line of Fawnwood between Lots 3 and 4, Block C in The Woods Addition. Elev. = 1382.17 NGVD29

BM #2: "□" Cut in top of the SE curb line of City View between Lots 29 and 30, Block B in The Woods Addition. Elev. = 1375.17 NGVD29



Saw, cut, remove and replace 2\"/>

Sta 9+23.17, Begin construction of 5\"/>

Lot 31, Block B is irrigated and seeded. Any grass or irrigation system damaged during construction shall be replaced by contractor. Cost to be included in "Site Restoration."

Contractor shall remove all concrete debris and rubble in this area. Cost to be included in "Site Clearing"

Curve #1
Curve Data Based on Centerline

Rad. = 80' Delta = 43°08'41" Tangent = 31.63'
Arc = 60.24' L.C. = 58.83' Def./Ft. = 21.48642 Min.

Station	Arc	Face Chord Lengths		Defl.	Total Defl.
		6' Left	6' Right		
9+23.17	-	-	-	0'00'00"	0'00'00"
9+50.00	26.83'	19.03'	34.38'	9'36'29"	9'36'29"
9+75.00	25.00'	17.74'	32.06'	8'57'09"	18'33'38"
9+83.41	8.41'	5.99'	10.82'	3'00'42"	21'34'20"

P.V.I.
Elev. = 1373.68
No V.C.

P.V.I.
Elev. = 1373.00
40' V.C.

P.V.I.
Elev. = 1374.15
74' V.C.

VALVE LOCATION TABLE

VALVE NUMBER	BASELINE STATION	OFFSET DISTANCE	OFFSET DIRECTION
V1	9+08.37	26.38'	Lt.
V2	13+61.00	26.00'	Lt.

Paving contractor will be responsible to operate all water valves on the project, in the presence of the inspector, to ensure accessibility to the valves, and that all valves are left in the "ON" position when the project is completed."

NOTE: ROLL TYPE CURB & GUTTER TO BE CONSTRUCTED ON THE PAVEMENT SHOWN ON THIS SHEET. TOP OF CURB ELEVATIONS ARE GIVEN FOR FULL HEIGHT CURB.

Baughman The Woods Addition - Phase 2
CITY VIEW Street Paving Improvements

Baughman Company, P.A. 315 Ellis St., Wichita, KS 67211 P 316-262-2721 F 316-502-0149
ENGINEERING | SURVEYING | PLANNING | LANDSCAPE ARCHITECTURE

PROJECT NUMBER 472-84360	DESIGN RDM	DRAWN RDM
REVISIONS:	APPROVED AEG	DATE 12-21-2010
SCALE Noted		SHEET 5 OF 23

19_STR_XSI.dwg 10-05-E499