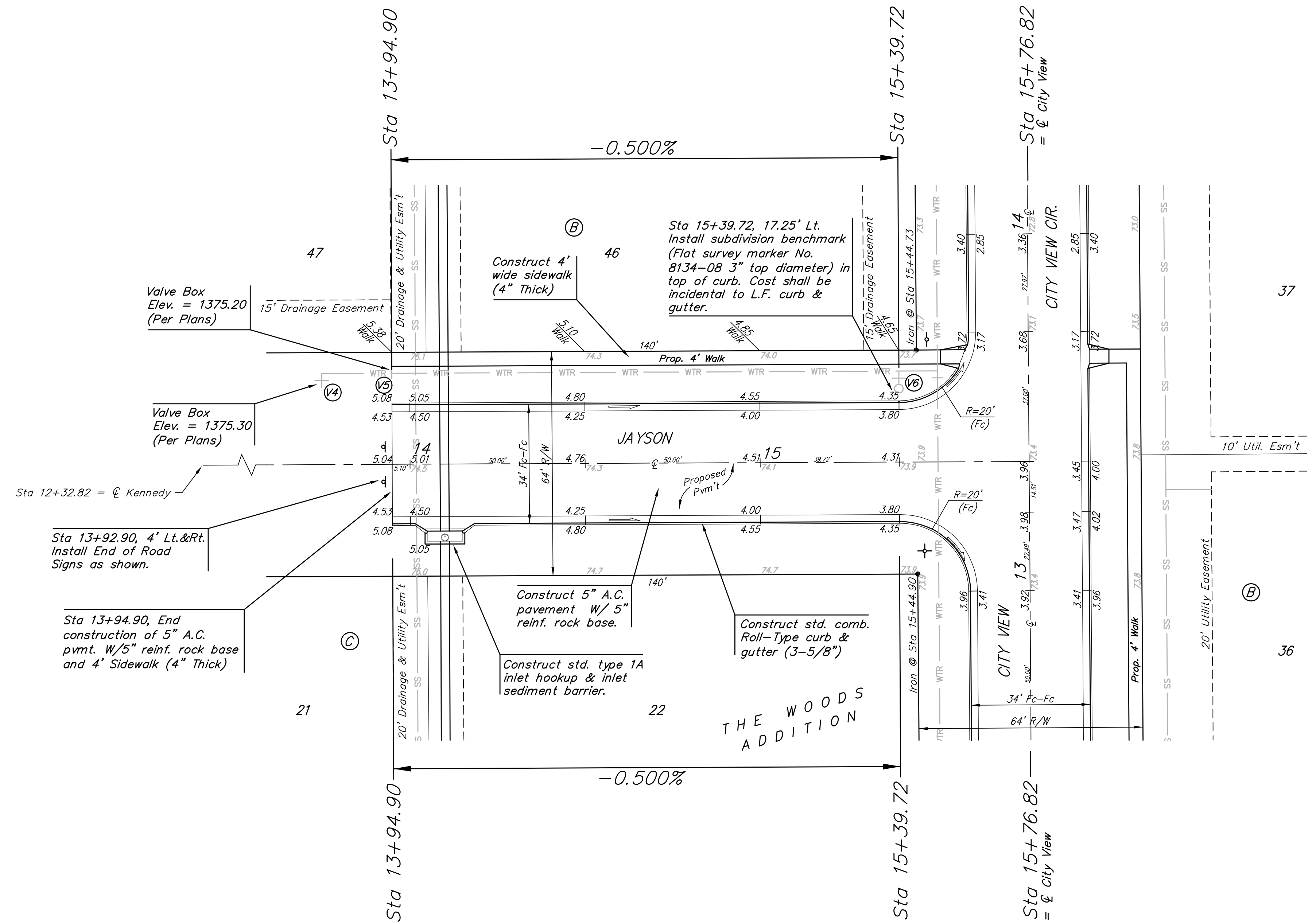
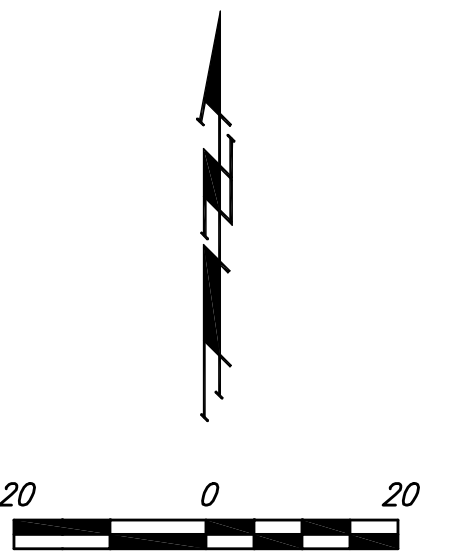


BENCHMARK:

BM #1: "□" Cut in top of the NE curb line of Fawnwood between Lots 3 and 4, Block C in The Woods Addition.
Elev. = 1382.17 NGVD29

BM #2: "□" Cut in top of the SE curb line of City View between Lots 29 and 30, Block B in The Woods Addition.
Elev. = 1375.17 NGVD29



VALVE LOCATION TABLE

VALVE NUMBER	BASELINE STATION	OFFSET DISTANCE	OFFSET DIRECTION
V4	13+74.90	26.38'	Lt.
V5	13+94.90	26.00'	Lt.
V6	15+39.72	26.00'	Lt.

Paving contractor will be responsible to operate all water valves on the project, in the presence of the inspector, to ensure accessibility to the valves, and that all valves are left in the "ON" position when the project is completed."

NOTE: ROLL TYPE CURB & GUTTER TO BE CONSTRUCTED ON THE PAVEMENT SHOWN ON THIS SHEET. TOP OF CURB ELEVATIONS ARE GIVEN FOR FULL HEIGHT CURB.

	The Woods Addition - Phase 2	
Street Paving Improvements		
<small>Baughman Company, P.A. 315 Ellis St., Wichita, KS 67211 P 316-262-7271 F 316-920-0149 ENGINEERING SURVEYING PLANNING LANDSCAPE ARCHITECTURE</small>		
PROJECT NUMBER 472-84360	DESIGN RDM	DRAWN RDM
REVISIONS:	APPROVED AEG	DATE 12-21-2010
SCALE Noted		SHEET 7 OF 23
<small>19_STR_XSL.dwg</small>		<small>10-05-E499</small>