

| STATE | PROJECT NO. | YEAR | SHEET NO. | TOTAL SHEETS |
|--------|--------------|------|-----------|--------------|
| KANSAS | 87 N-0361-01 | 2011 | 5 | 169 |

MKEC
ENGINEERING
CONSULTANTS, INC.
411 N. WEBB ROAD
WICHITA, K.S. 67206
316-684-9600

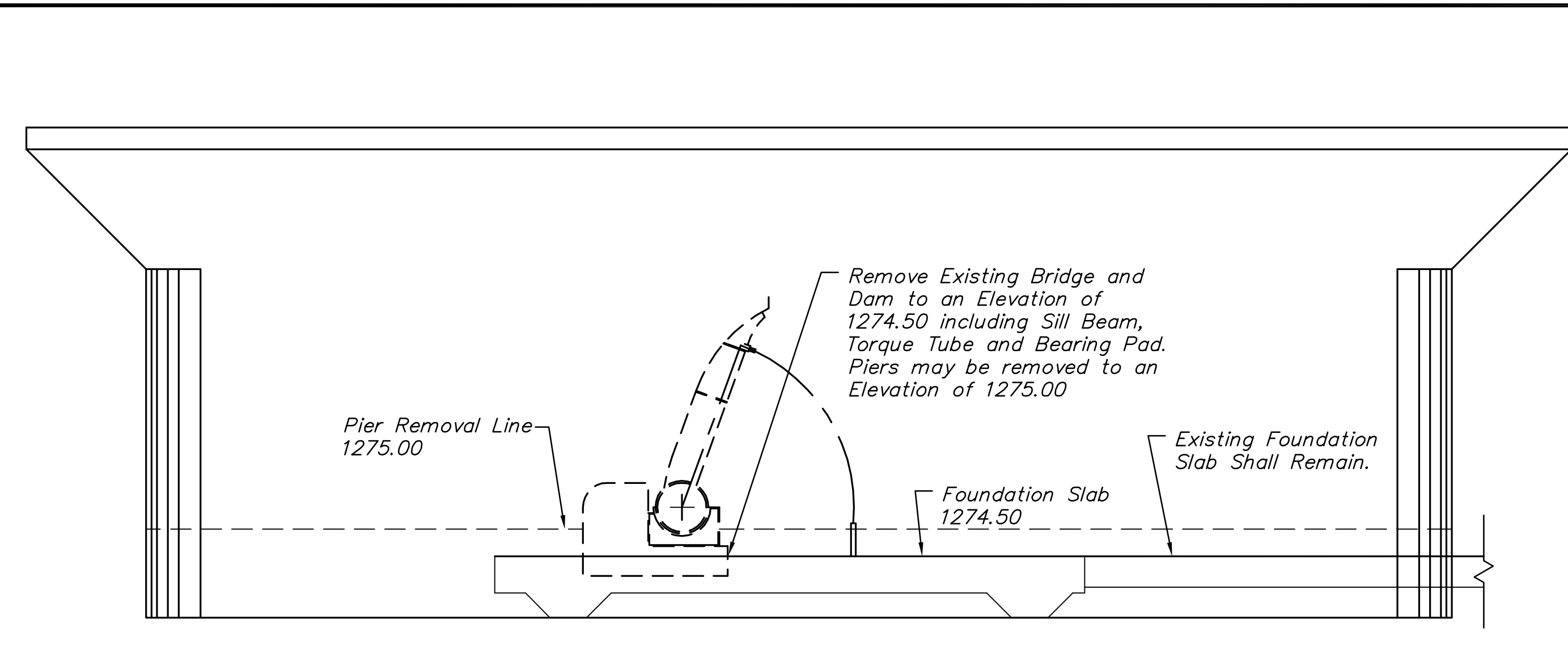
LINCOLN STREET BRIDGE AND DAM IMPROVEMENTS OVER ARKANSAS RIVER

DEMOLITION PLAN
SHEET TITLE
472-84883
PROJECT NUMBER

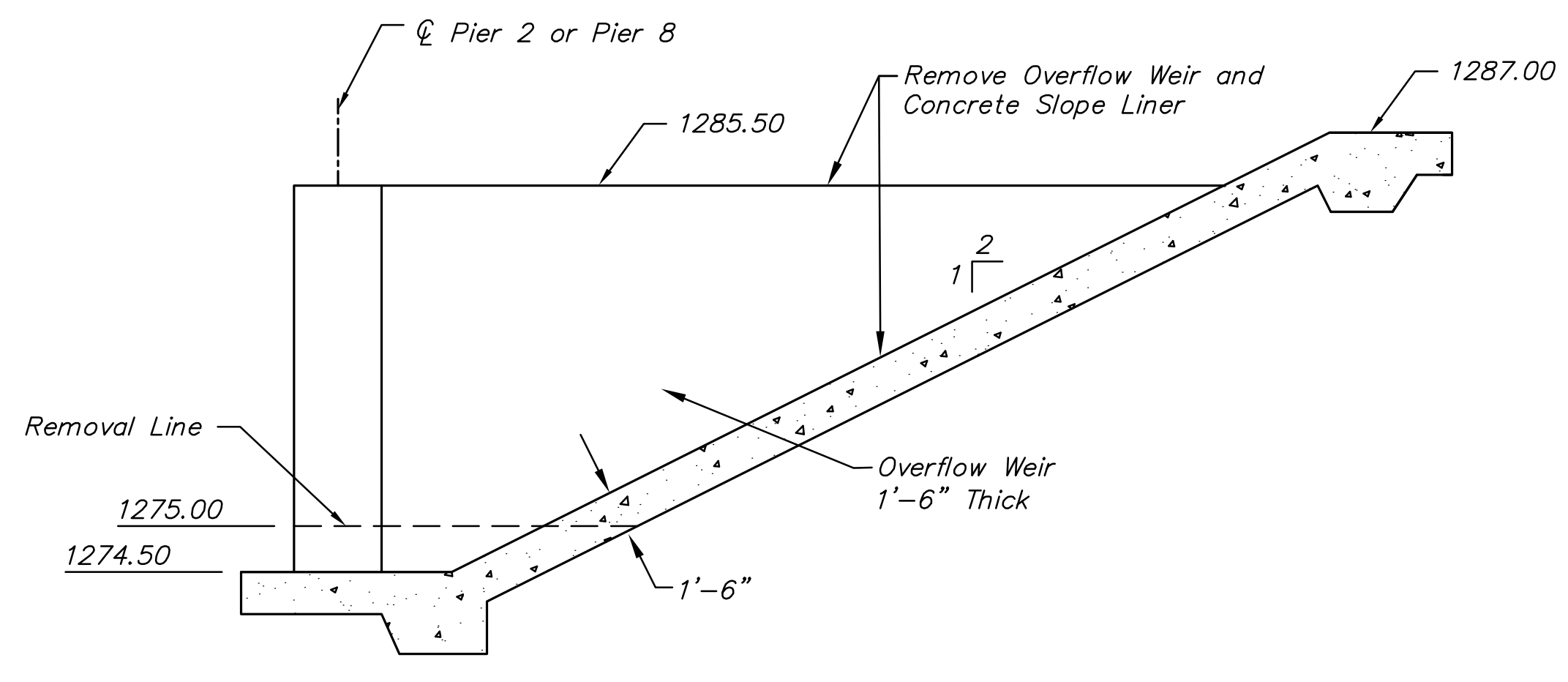
JRA
DESIGN BY
DPG
DRAWN BY
CHECKED BY

ISSUED
1/24/2011
REVISED

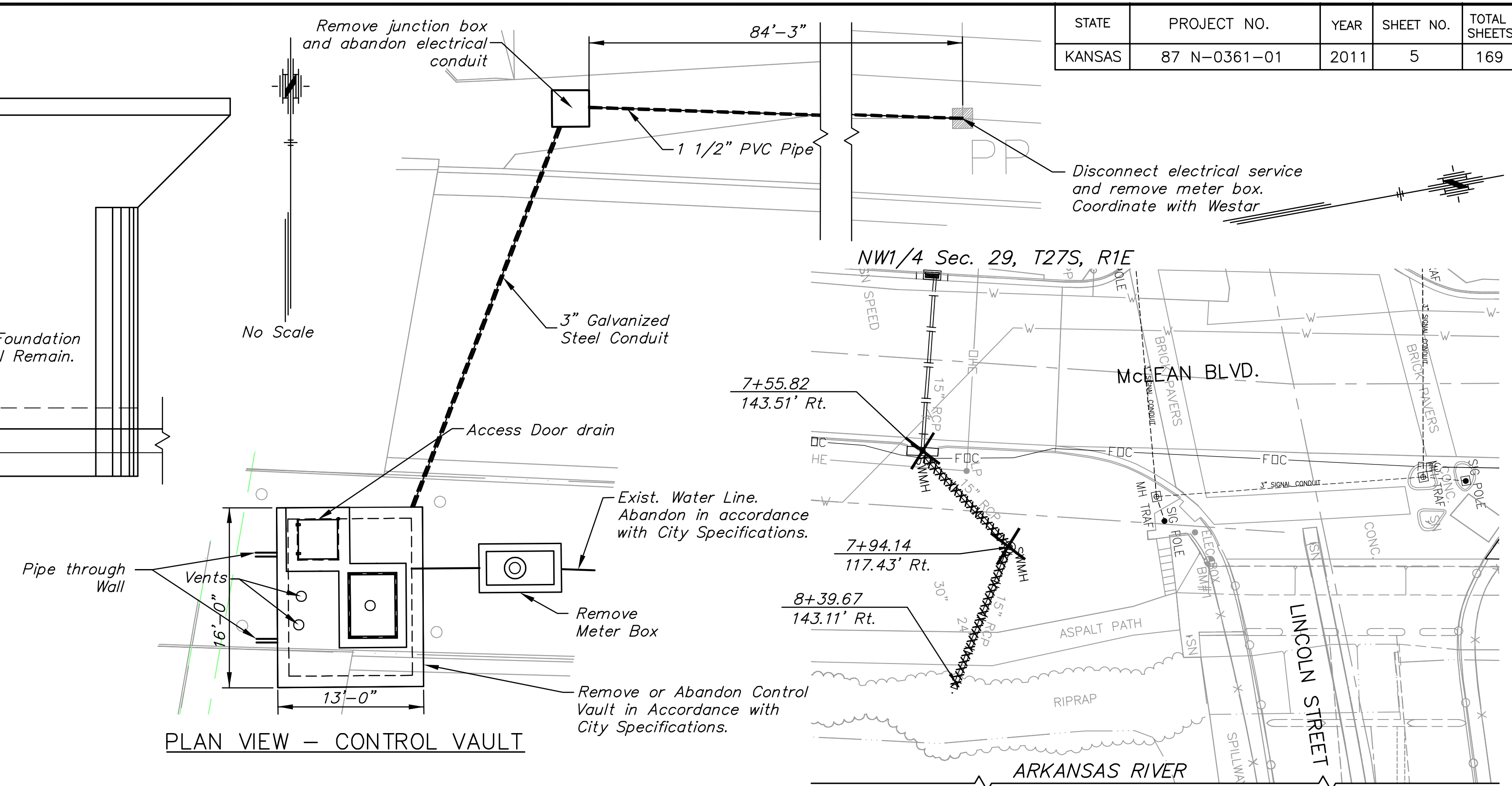
SHEET NO.
5 of 169



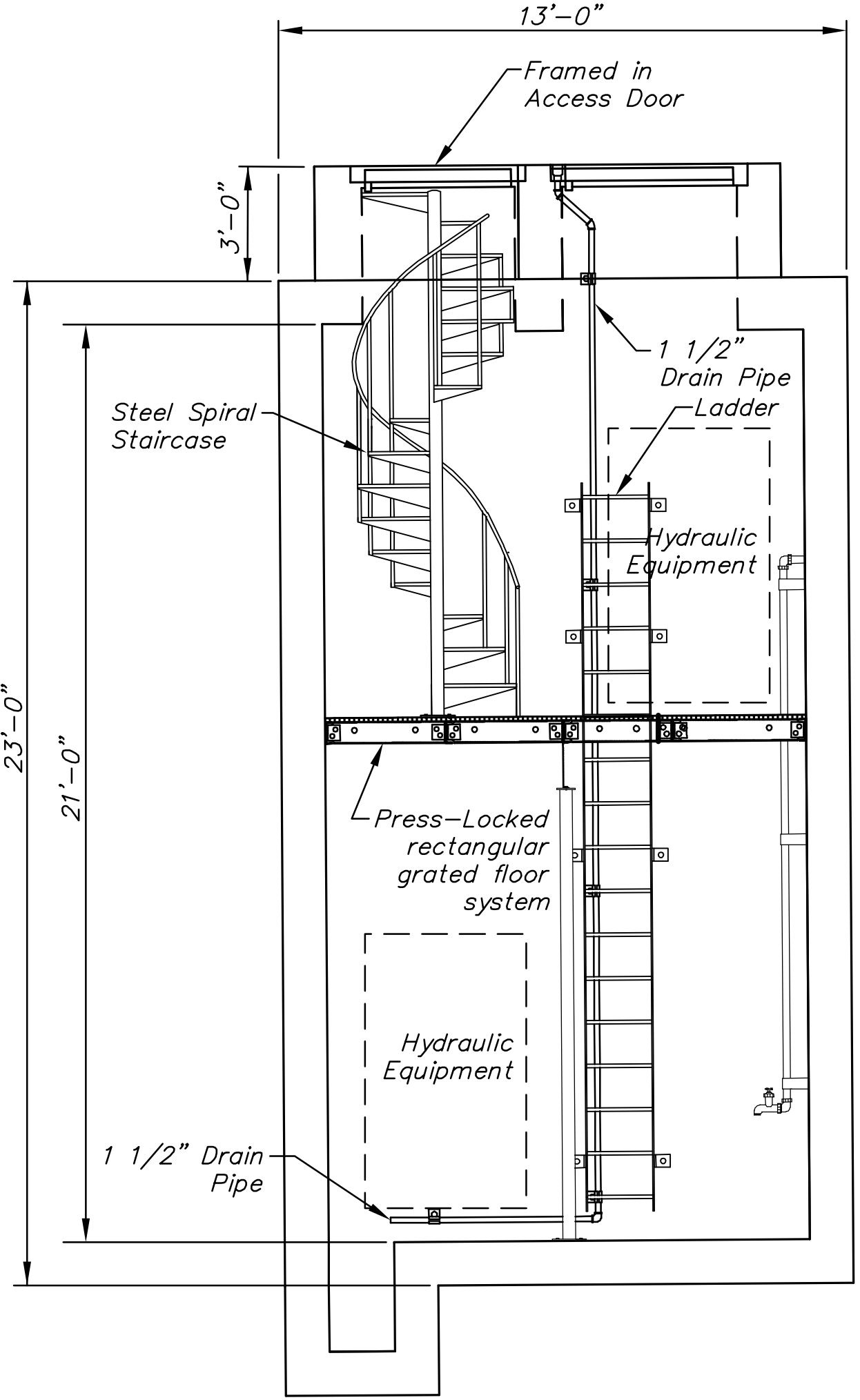
DAM REMOVAL
NOT TO SCALE



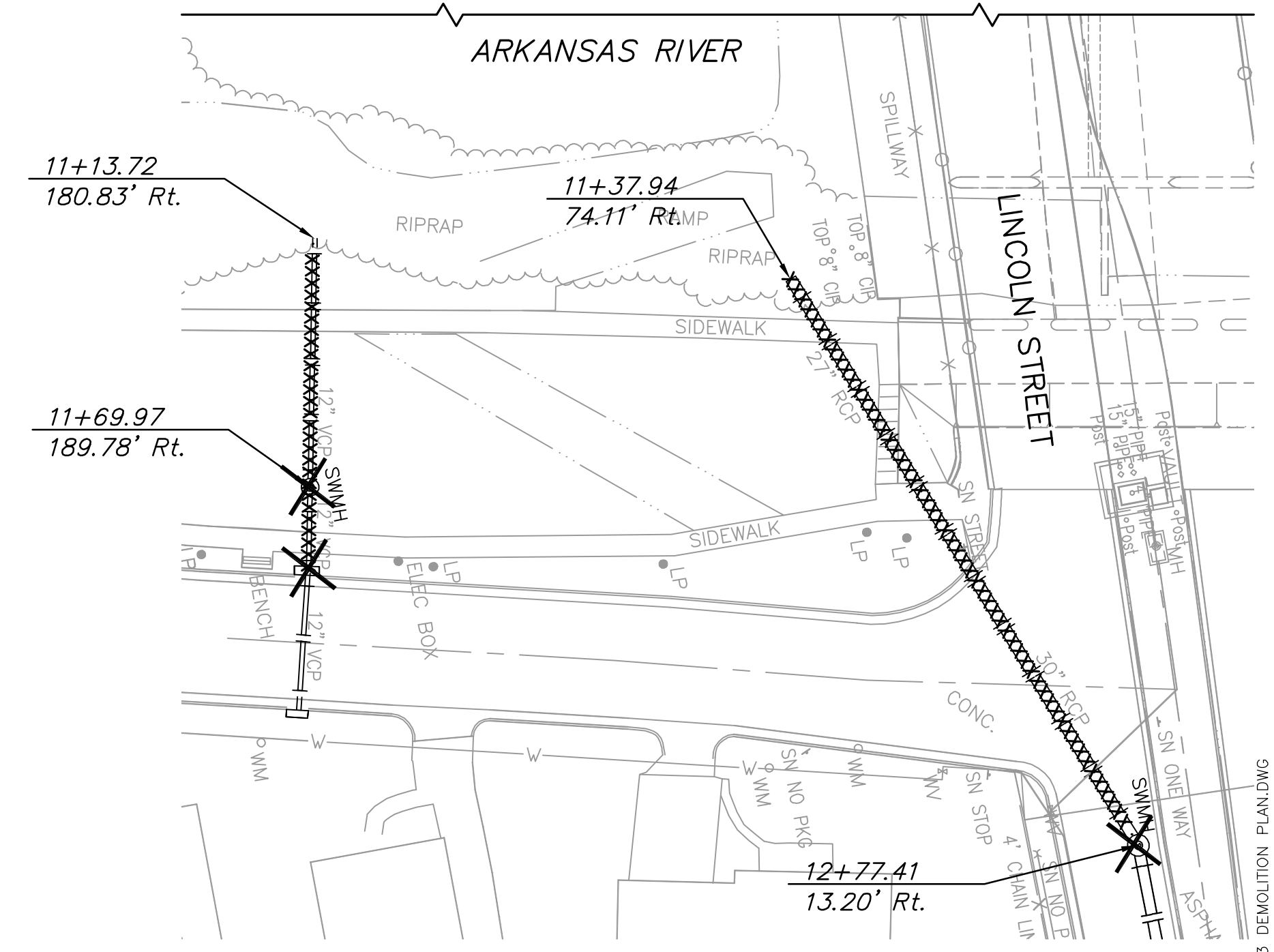
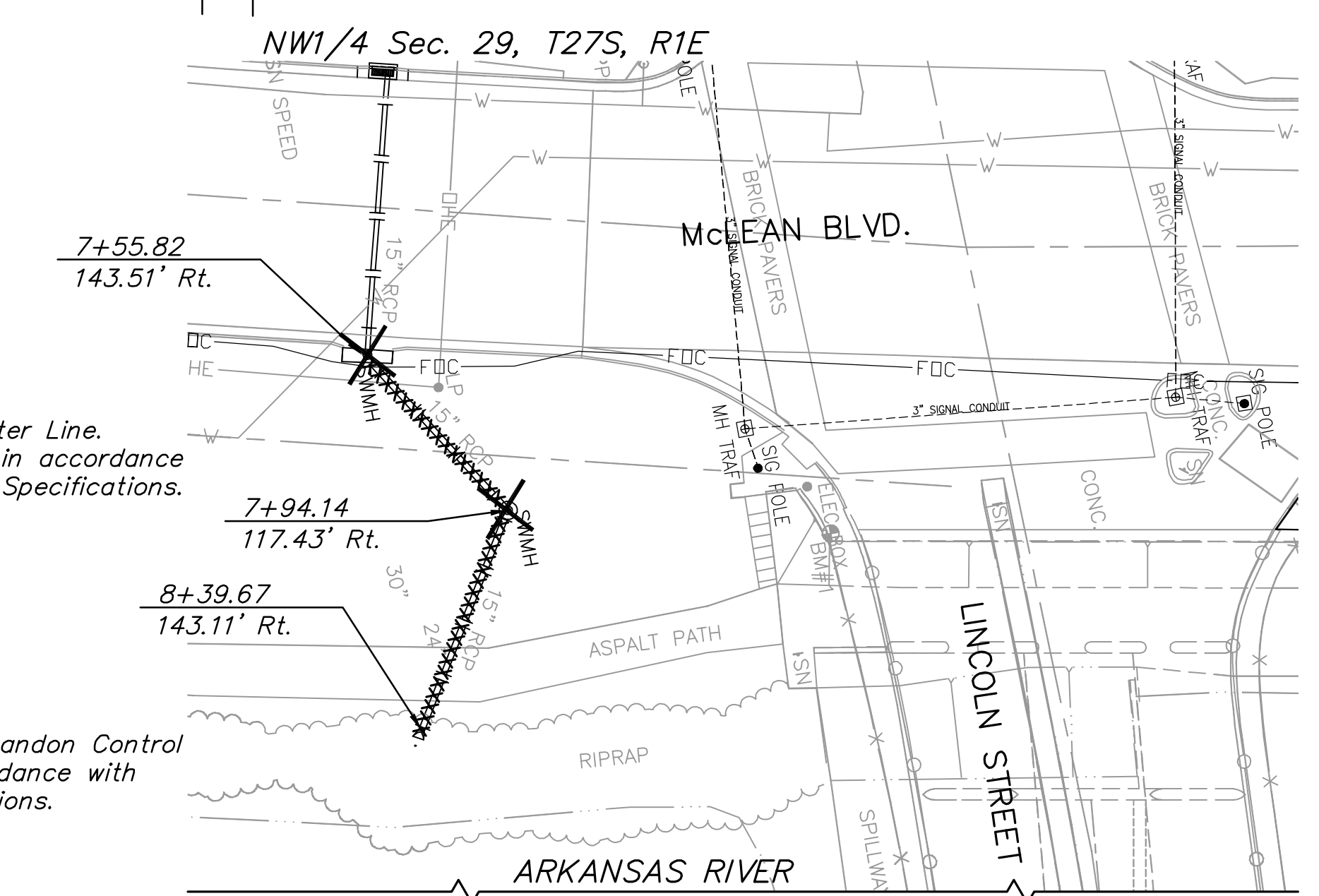
OVERFLOW WEIR REMOVAL
NOT TO SCALE



PLAN VIEW - CONTROL VAULT



VERTICAL SECTION



STORM SEWER REMOVAL
SCALE 1"=30'

LEGEND

- XXXXX Line to be Removed/Abandoned
- Manhole/Inlet to be Removed/Abandoned

GENERAL NOTES:

Tree removal and pavement removal are shown on sheet 6. Tree removal will be paid for as "Large Tree Removal" or "Small Tree Removal" as part of the Dam project or Portage project. Pavement removal will be paid for as "Pavement Removal" or "Sidewalk, Driveway and Parking Lot Removal" as part of the Bridge, Dam or Portage projects.

Remove all contents in vault, including all grating, ladders, and stairs prior to removal/abandonment. Plug all pipes to remain at point where removal ends in accordance with City Specifications.

Control Vault, dam removal and over flow weir removal/abandonment shall be subsidiary to "Removal of Existing Structure" as part of the Lincoln Bridge Project.

Existing foundation slab shall be protected during removal of existing Bridge. Damage to the existing foundation slab shall be replaced at contractors expense.

Storm sewer system removal is subsidiary to "Removal of Existing Structure".

Removal of the existing Lincoln Street Bridge is subsidiary to "Removal of Existing Structure"

PLOTTER: Tuesday, January 25, 2011 8:58AM

J:\CHIL\07433\DWG\BRIDGE\DEMO\07433 DEMOLITION PLAN.DWG