

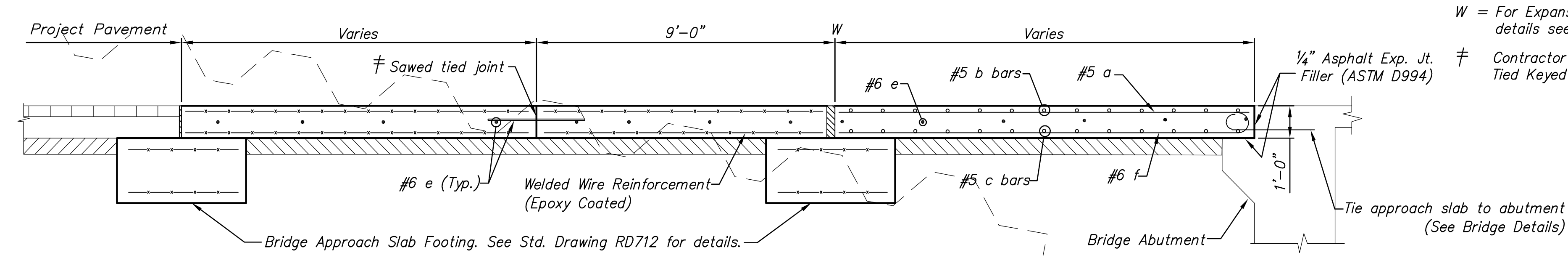
STATE	PROJECT NO.	YEAR	SHEET NO.	TOTAL SHEETS
KANSAS	87 N-0361-01	2011	7	169

MKEC
ENGINEERING
CONSULTANTS, INC.
411 N. WEBB ROAD
WICHITA, K.S. 67206
316-684-9600

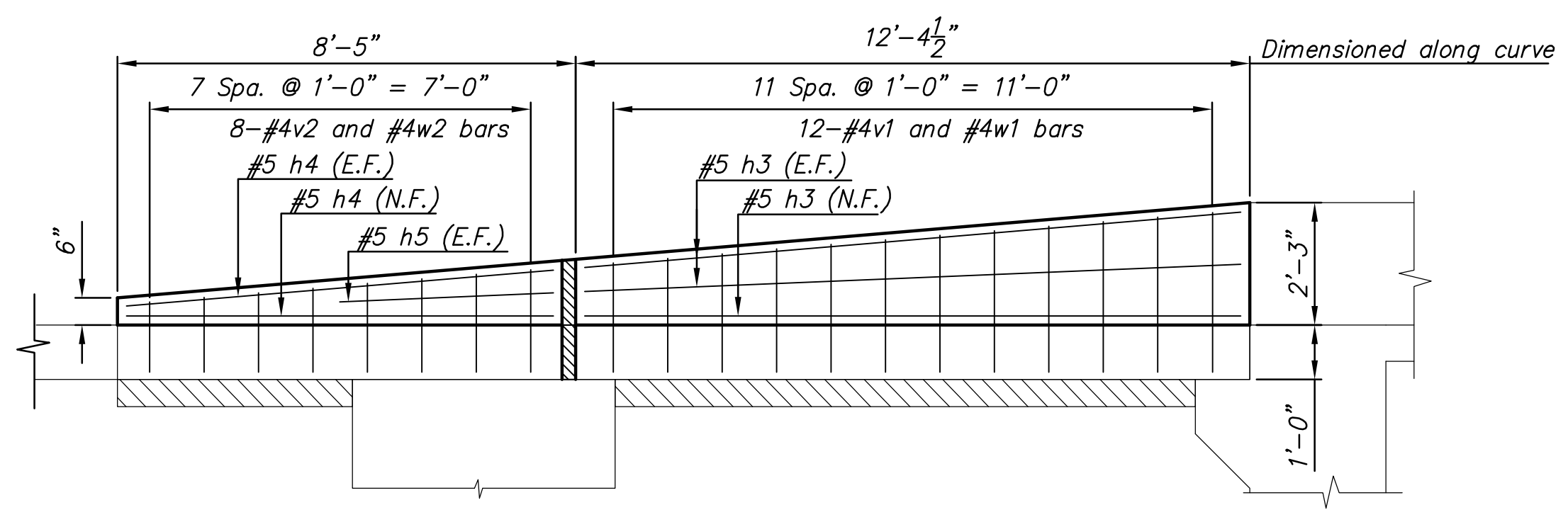
W = For Expansion/Pressure Relief Joint width and details see Sheet No. 12
 † Contractor has the option of substituting a Tied Keyed Construction Joint.

GENERAL NOTES

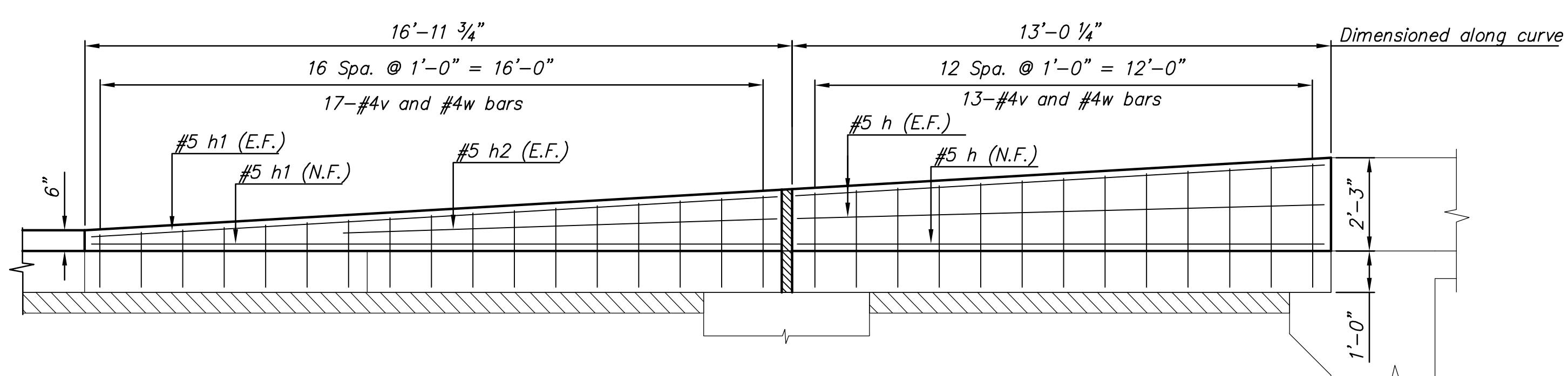
- Special Concrete Bridge Approach shall be paid for as sq. yds of "Concrete Pavement 12" (Reinforced)" and includes all work and materials required to construct the approach slab as shown on this sheet.
- Transition Approach Rail shall be paid for as lineal feet of "Concrete Safety Barrier (Special)(AE)."
- Formed joints shall be edged with 1/4" radius tool for length of joint.
- Clearance from the face of concrete for all reinforcing steel, unless noted, shall be 2".
- All casting to existing concrete, if cast previously, shall be brush blasted and power washed prior to casting concrete.
- All existing concrete shall be water soaked for 2 hours prior to casting concrete.
- All reinforcing steel shall be epoxy coated.
- Standard reinforcing bar hooks in accordance with the latest ACI specifications shall be used throughout.
- The pressure relief joint shall be omitted when the concrete bridge approach pavements abuts asphalt pavement.
- All work and materials required for installation of expansion joints and pressure relief joints shall be subsidiary to this bid item.
- At the Contractor's option #4x3'-0" tie bars @ 15" centers may be substituted for the #6 e bars at 2'-6" centers.



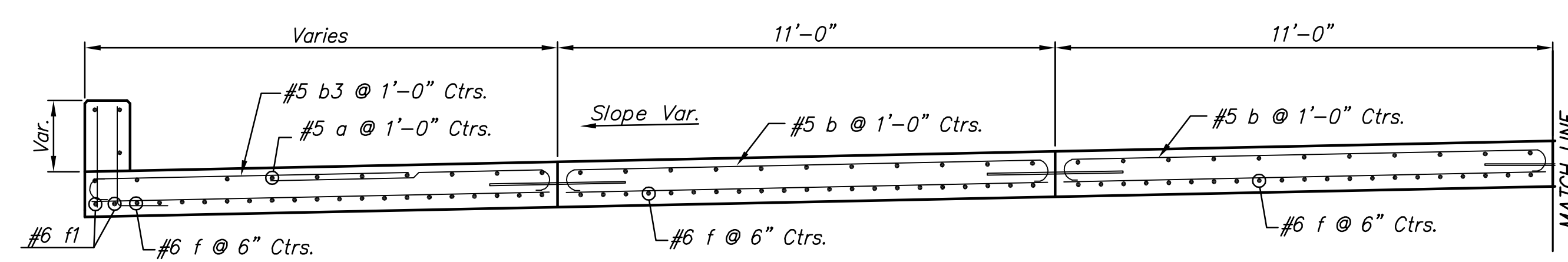
LONGITUDINAL SECTION



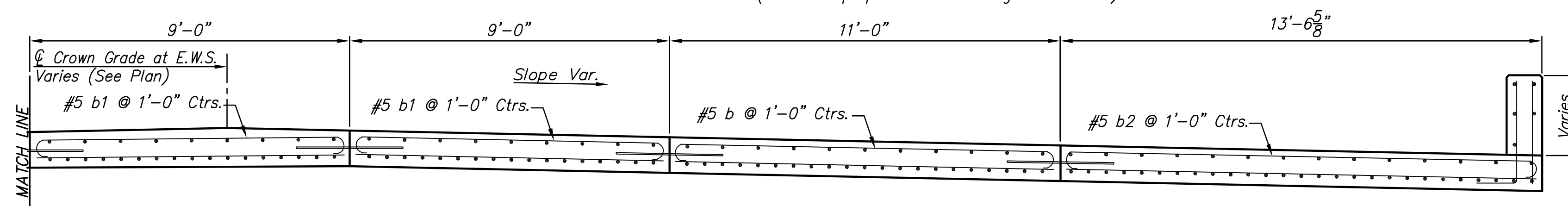
NORTH TRANSITION RAIL



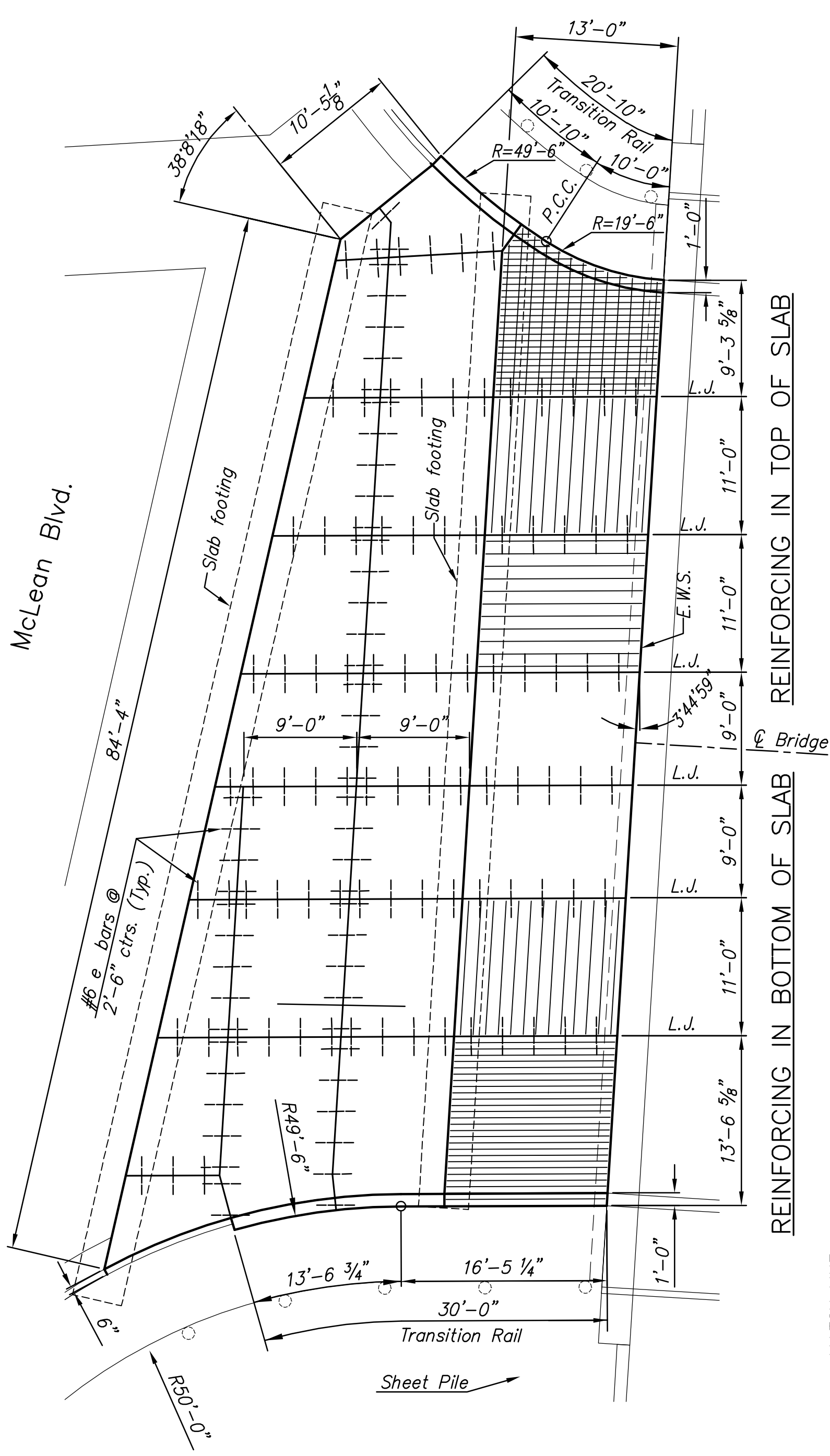
SOUTH TRANSITION RAIL



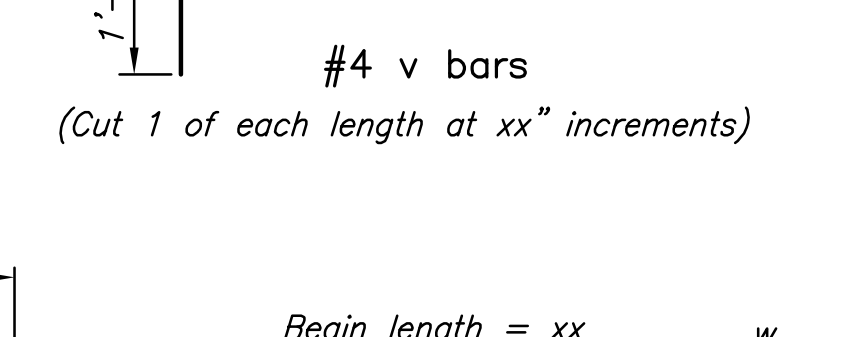
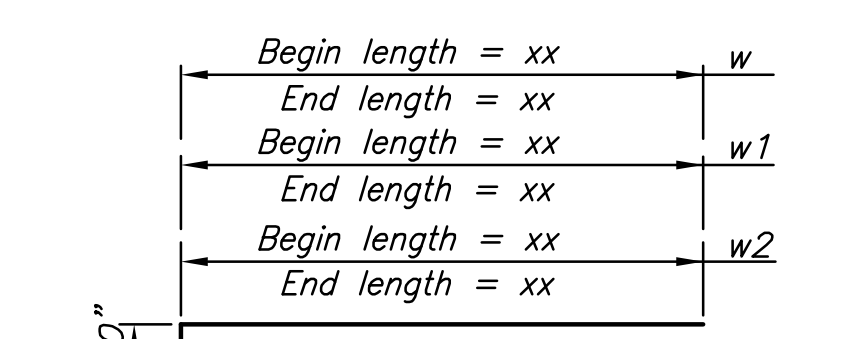
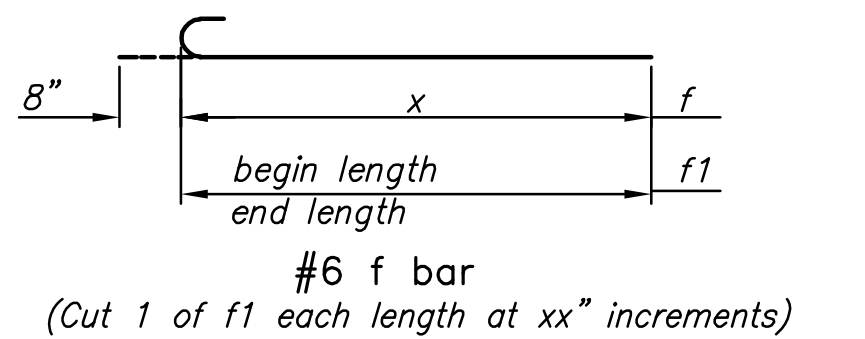
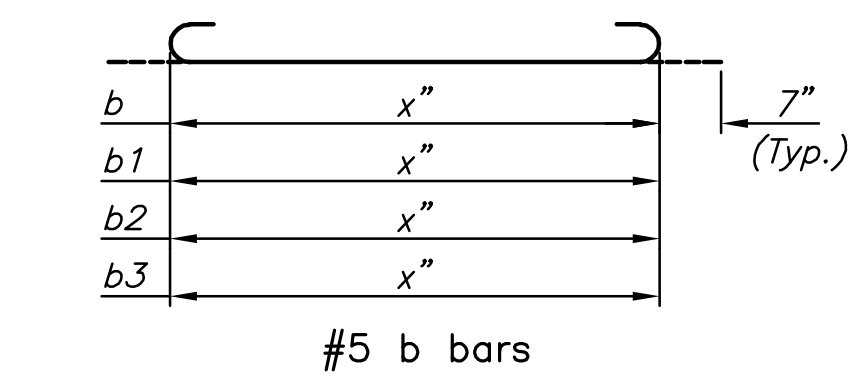
PARTIAL SECTION
(Measured perpendicular to Longitudinal Joint)



PARTIAL SECTION



PLAN VIEW
(See Intersection Plan for Elevations)



BENDING DIAGRAM
All dimensions are out to out unless otherwise noted.

BILL OF MATERIALS (WEST APPROACH ONLY)													
Bar Schedule Δ See Bending Diagram													
Bar No.	a	a1	b1	b2	c	c1	e	f	g	h	h1	v	w
Size	#5	#5	#6	#6	#6	#6	#6	#5	#5	#5	#5	#4	#4
Length													

LINCOLN STREET BRIDGE AND DAM IMPROVEMENTS OVER ARKANSAS RIVER

WEST APPROACH SLAB DETAILS
SHEET TITLE
472-84883
PROJECT NUMBER

DESIGN BY: ABC
DRAWN BY: ABC
CHECKED BY: ABC

ISSUED: 1/24/2011
REVISED:

PLOT DATE: Tuesday, January 25, 2011 8:54 AM

J:\CIVIL\07433\DWG\BRIDGE\PAV\07433_APPR_SLAB_WEST.DWG