

STATE	PROJECT NO.	YEAR	SHEET NO.	TOTAL SHEETS
KANSAS	87 N-0361-01	2011	8	169

**MKEC**  
ENGINEERING  
CONSULTANTS, INC.  
411 N. WEBB ROAD  
WICHITA, K.S. 67206  
316-684-9600

**LINCOLN STREET BRIDGE AND  
DAM IMPROVEMENTS OVER  
ARKANSAS RIVER**

**EAST  
APPROACH  
SLAB  
DETAILS**  
SHEET TITLE  
472-84883  
PROJECT NUMBER

DESIGN BY: ABC  
DRAWN BY: ABC  
CHECKED BY: ABC

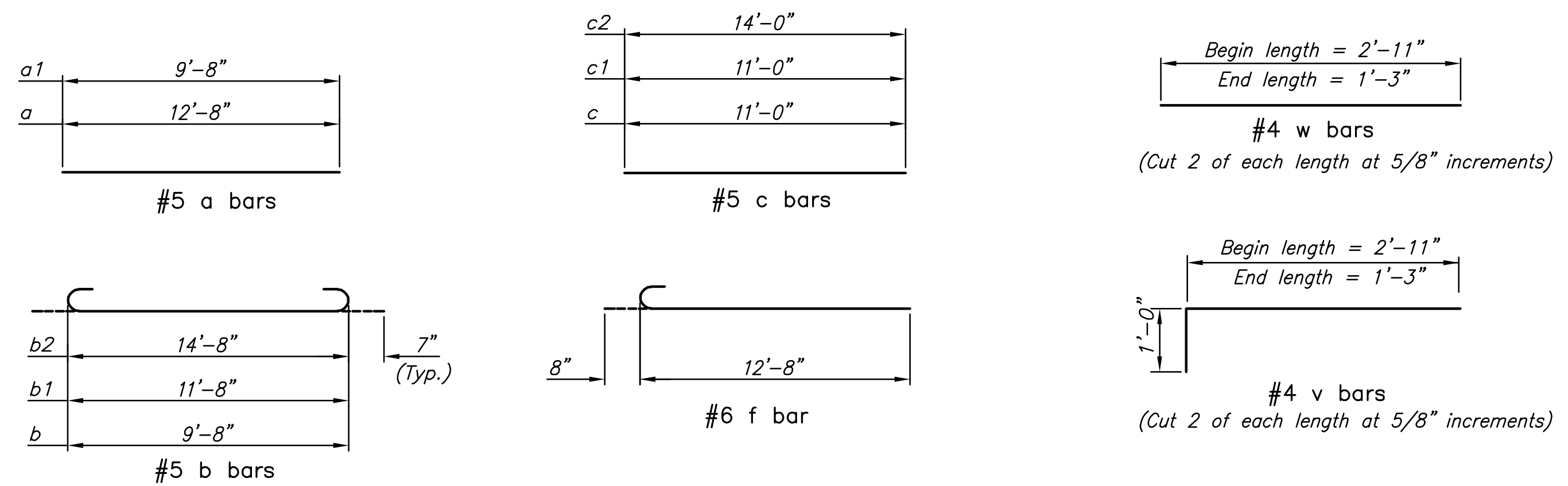
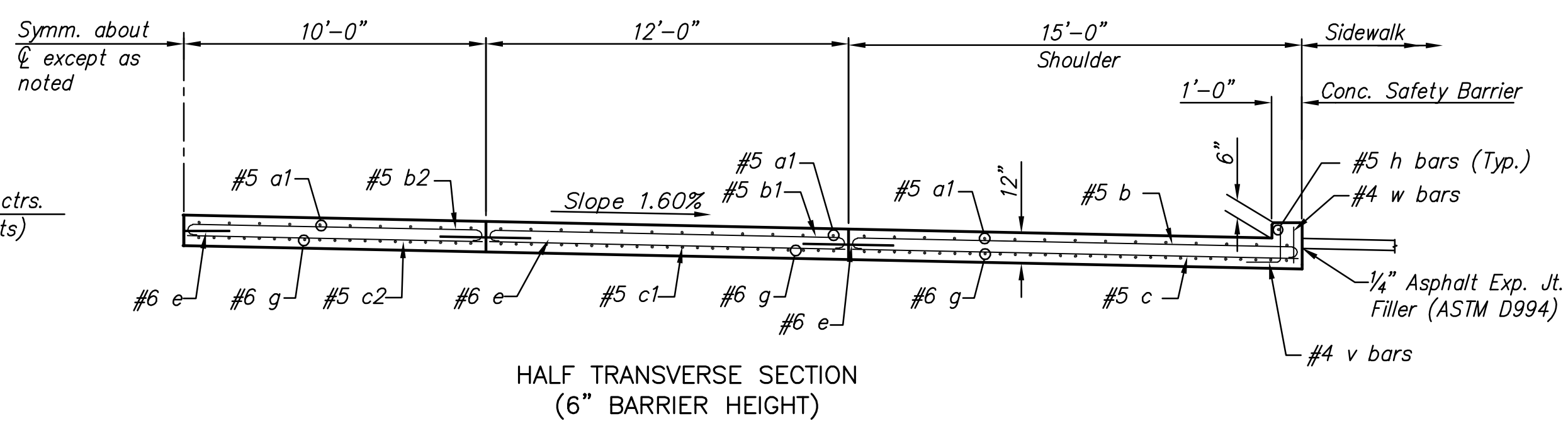
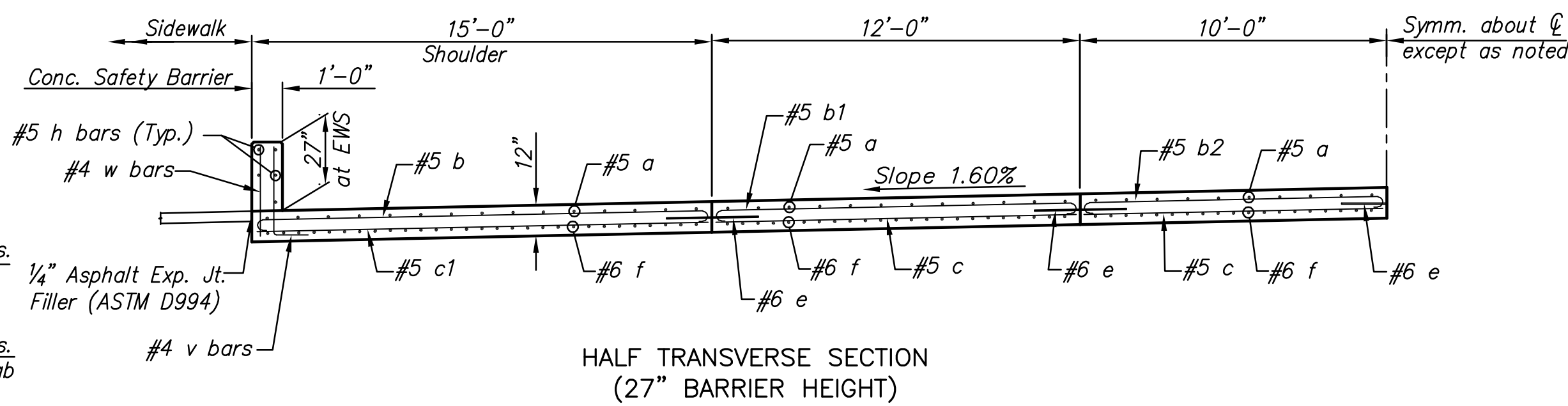
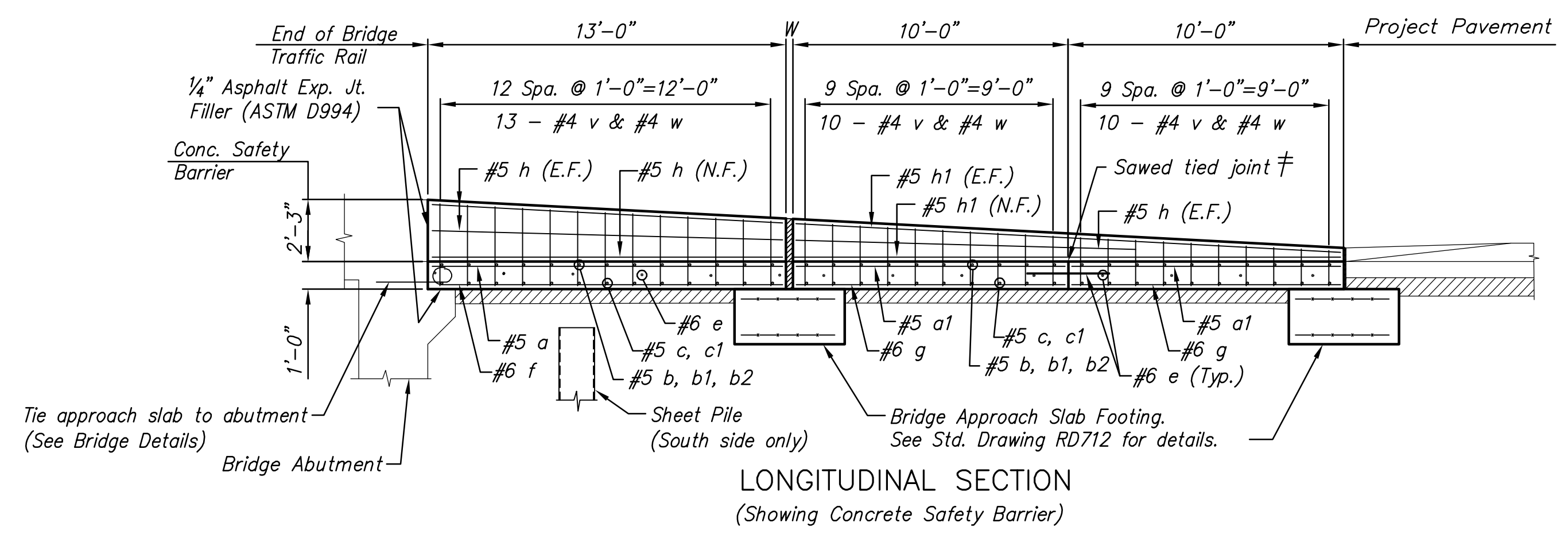
ISSUED: 1/24/2011  
REVISED:

SHEET NO.  
**8 of 169**

**GENERAL NOTES**

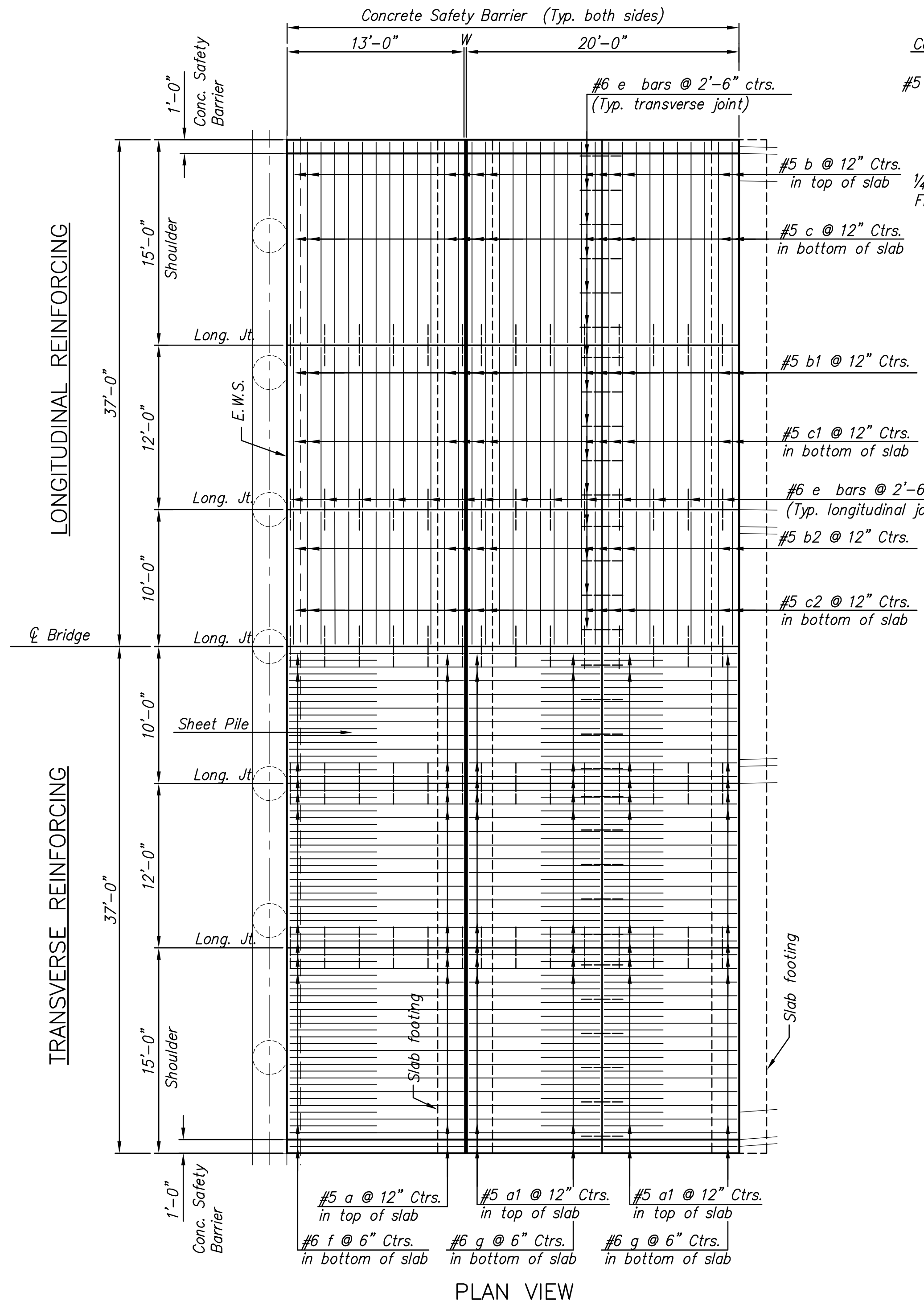
- Special Concrete Bridge Approach shall be paid for as sq. yds of "Concrete Pavement 12" (Reinforced)" and includes all work and materials required to construct the approach slab as shown on this sheet.
- Transition Approach Rail shall be paid for as lineal feet of "Concrete Safety Barrier (Special)(AE)."
- Formed joints shall be edged with 1/4" radius tool for length of joint.
- Clearance from the face of concrete for all reinforcing steel, unless noted, shall be 2".
- All casting to existing concrete, if cast previously, shall be brush blasted and power washed prior to casting concrete.
- All existing concrete shall be water soaked for 2 hours prior to casting concrete.
- All reinforcing steel shall be epoxy coated.
- Standard reinforcing bar hooks in accordance with the latest ACI specifications shall be used throughout.
- The pressure relief joint shall be omitted when the concrete bridge approach pavement abuts asphalt pavement.
- All work and materials required for installation of expansion joints and pressure relief joints shall be subsidiary to this bid item.
- At the Contractor's option #4x3'-0" tie bars @ 15" centers may be substituted for the #6 e bars at 2'-6" centers.

W For Expansion/Pressure Relief Joint width and details See Sheet No. 12.  
‡ Contractor has the option of substituting a Tied Keyed Construction Joint.



**BENDING DIAGRAM**  
All dimensions are out to out unless otherwise noted.

BILL OF MATERIALS (EAST APPROACH ONLY)															
Bar Schedule $\Delta$ See Bending Diagram															
Bar No.	a	a1	b	b1	b2	c	c1	c2	e	f	g	h	h1	v	w
Size	#5	#5	#6	#6	#6	#6	#6	#6	#6	#5	#5	#5	#5	#4	#4
Length															



**PLAN VIEW**

PLOTED: Tuesday, January 25, 2011 8:54 AM

J:\CIVIL\07433\DWG\BRIDGE\PAV\07433\_APPR\_SLAB\_EAST.DWG