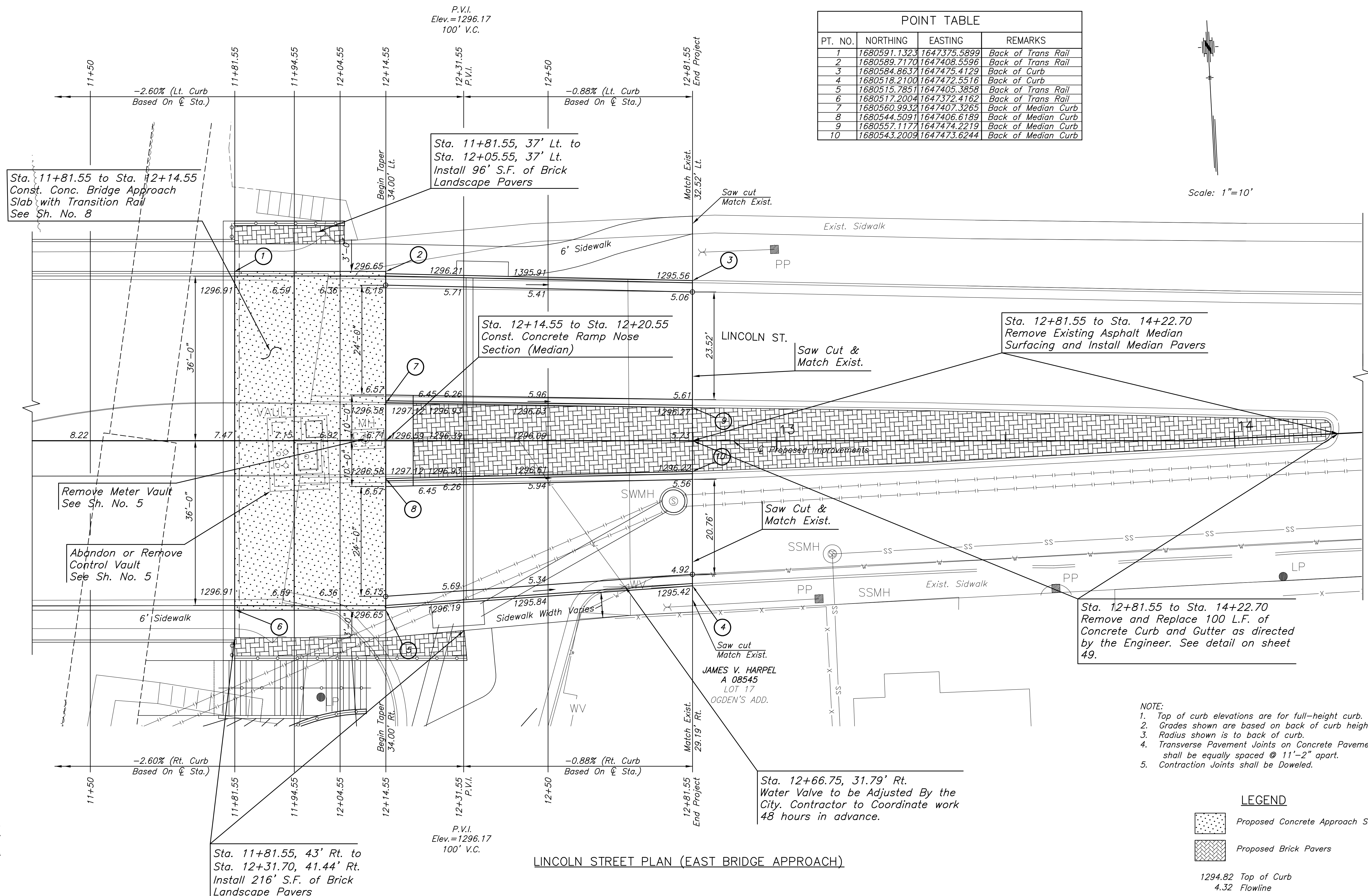
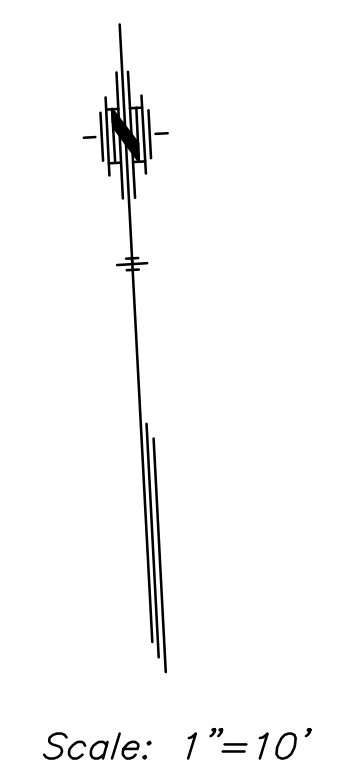


**LINCOLN STREET BRIDGE AND
DAM IMPROVEMENTS OVER
ARKANSAS RIVER**

POINT TABLE			
PT. NO.	NORTHING	EASTING	REMARKS
1	1680591.1323	1647375.5899	Back of Trans Rail
2	1680589.7170	1647408.5596	Back of Trans Rail
3	1680584.8637	1647475.4129	Back of Curb
4	1680518.2100	1647472.5516	Back of Curb
5	1680515.7851	1647405.3858	Back of Trans Rail
6	1680517.2004	1647372.4162	Back of Trans Rail
7	1680560.9932	1647407.3265	Back of Median Curb
8	1680544.5091	1647406.6189	Back of Median Curb
9	1680557.1177	1647474.2219	Back of Median Curb
10	1680543.2009	1647473.6244	Back of Median Curb



- NOTE:**
- Top of curb elevations are for full-height curb.
 - Grades shown are based on back of curb height.
 - Radius shown is to back of curb.
 - Transverse Pavement Joints on Concrete Pavement shall be equally spaced @ 11'-2" apart.
 - Contraction Joints shall be Doweled.

LEGEND

- Proposed Concrete Approach Slab
- Proposed Brick Pavers

1294.82 Top of Curb
4.32 Flowline

PAVING DETAILS

SHEET TITLE
472-84883
PROJECT NUMBER

JRA
DESIGN BY
DPG
DRAWN BY
KJS
CHECKED BY

ISSUED
1/24/2011
REVISED

SHEET NO.
16 of 169

PLOTTER: Tandy, January 25, 2011 @ 08:53AM

J:\CIVIL\07433\DWG\BRIDGE\PAV\07433INT 2.DWG