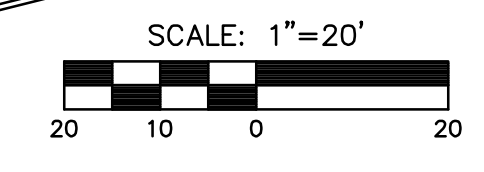


STATE	PROJECT NO.	YEAR	SHEET NO.	TOTAL SHEETS
KANSAS	87 N-0361-01	2011	21	169

MKEC
ENGINEERING
CONSULTANTS, INC.
411 N. WEBB ROAD
WICHITA, KS. 67206
316-684-9600



Sta. 10+00.00, Line 1
Install 36" x 12.16' Pipe (E)
E Out=1267.0 (W)

Sta. 11+38.41, Line 1
Const. Std. Manhole
Dia.=6'-0"
MH Top=1285.63
Install 36" x 81.08' Pipe (NE)
E In=1280.07 (36" Pipe-NE)
E Out=1267.57 (36" Pipe-SW)

Sta. 13+79.97, Line 1=
Sta. 12+27.57, 37.56' Rt.
Const. Curb Inlet (Type 1)
L=11'-4", W=6'-4", H=16'-6"
Inlet Top=1296.16
Install 36" x 56.12' Pipe (NE)
E In=1281.48 (36" Pipe-NE)
E Out=1281.38 (36" Pipe-SW)
E In=1284.48 (18" Pipe-N)

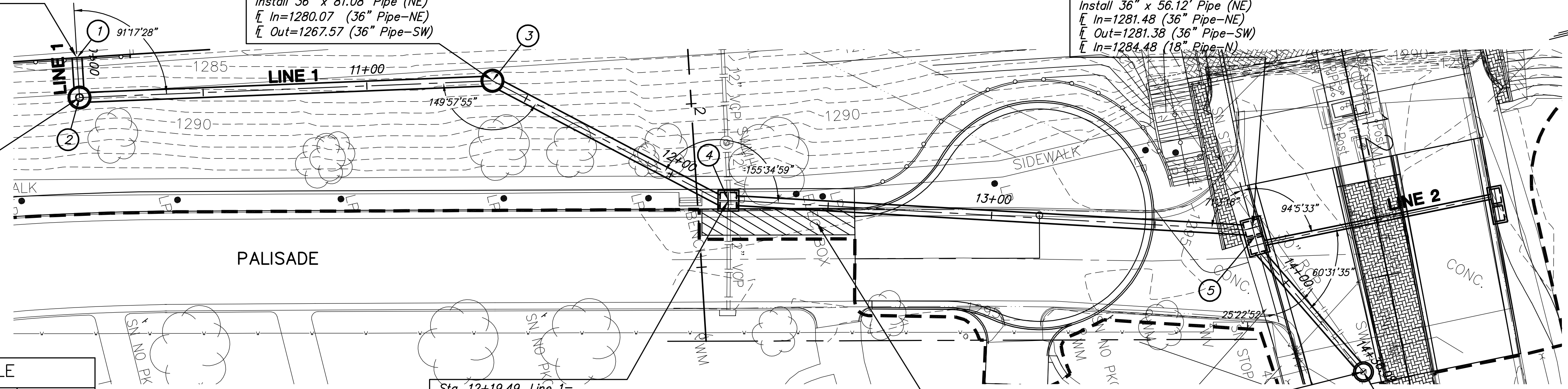
Sta. 10+12.16, Line 1
Const. Std. Manhole
Dia.=6'-0"
MH Top=1285.63
Install 36" x 126.43' Pipe (NE)
E In=1267.16 (36" Pipe-NE)
E Out=1267.06 (36" Pipe-W)

Sta. 12+19.49, Line 1=
Sta. 12+30.31, 37.37' Rt.
Const. Curb Inlet (Type 1)
L=6'-4", W=6'-4", H=16'-6"
Inlet Top=1294.21
Install 36" x 160.48' Pipe (NE)
E In=1280.58 (36" Pipe-NE)
E Out=1280.48 (36" Pipe-SW)

Sta. 14+36.09, Line 1=
Sta. 12+77.41, 13.20' Rt.
Const. Std. Manhole
Dia.=5'-0"
MH Top=1295.48
E In=1282.82 (Exist. 30" Pipe-E)
E Out=1282.32 (36" Pipe-SW)

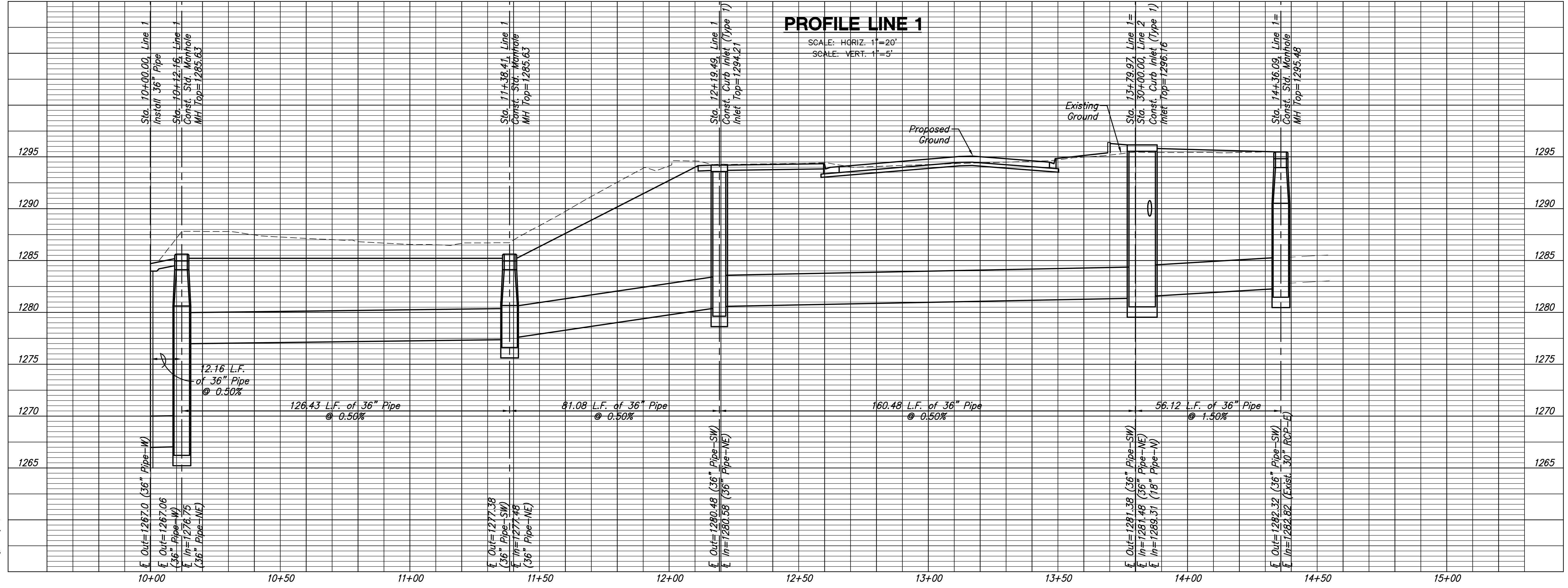
Construct 42 S.Y. of Permanent
Pavement Patch. See Sh. No. 49

POINT TABLE			
PT. NO.	NORTHING	EASTING	PROJECT
1	1680178.78	1647281.14	DAM
2	1680176.59	1647293.10	
3	1680300.22	1680300.22	
4	1680361.30	1680361.30	
5	1680514.74	1680514.74	
6	1680536.87	1680536.87	



PLAN LINE 1

PROFILE LINE 1



PLOT DATE: Tuesday, January 25, 2011 8:52 AM

**LINCOLN STREET BRIDGE AND
DAM IMPROVEMENTS OVER
ARKANSAS RIVER**

**STORM SEWER
LINE 1
STA. 10+00 TO
STA. 15+00**
SHEET TITLE
472-84883
PROJECT NUMBER

DESIGN BY: WNJ
DRAWN BY: JRA
CHECKED BY: KJS

ISSUED: 1/24/2011
REVISED:

SHEET NO.
21 of 169