

STATE	PROJECT NO.	YEAR	SHEET NO.	TOTAL SHEETS
KANSAS	87 N-0361-01	2011	24	169

MKEC
ENGINEERING
CONSULTANTS, INC.
411 N. WEBB ROAD
WICHITA, K.S. 67206
316-684-9600

**LINCOLN STREET BRIDGE AND
DAM IMPROVEMENTS OVER
ARKANSAS RIVER**

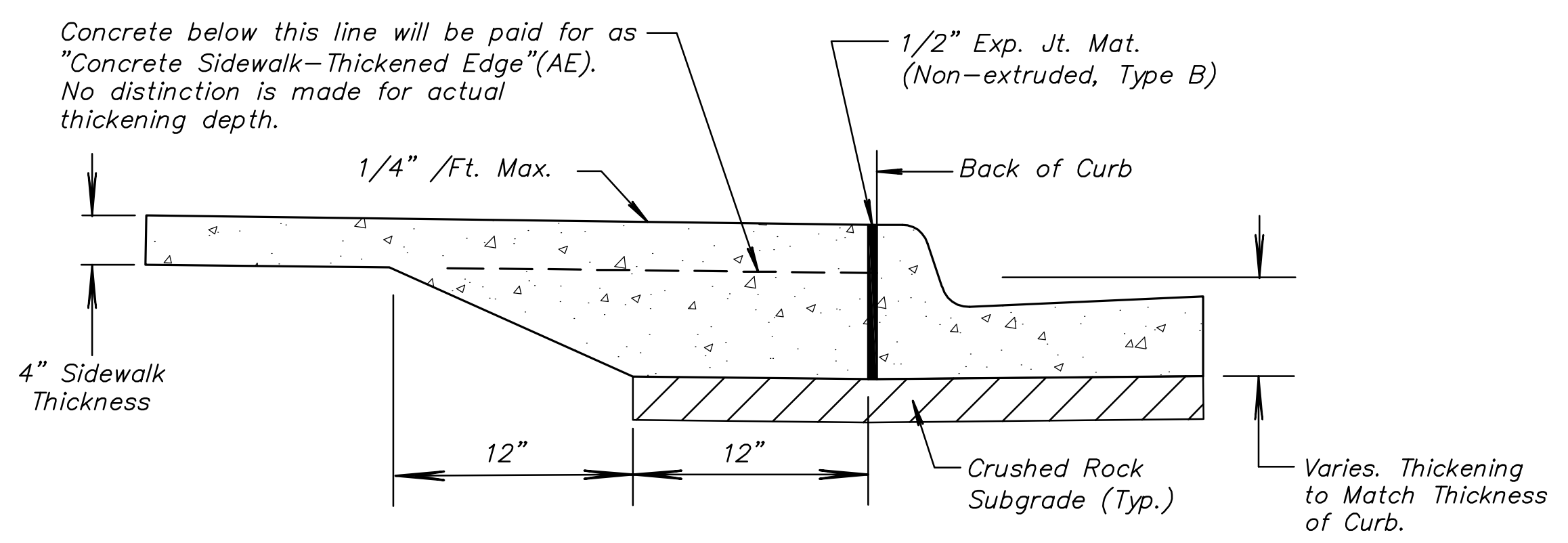
**SIDEWALK AND
CONCRETE PATH
DETAILS**
SHEET TITLE
472-84883
PROJECT NUMBER

JRA
DESIGN BY
JSB
DRAWN BY
JRA
CHECKED BY

ISSUED
1/24/2011
REVISED

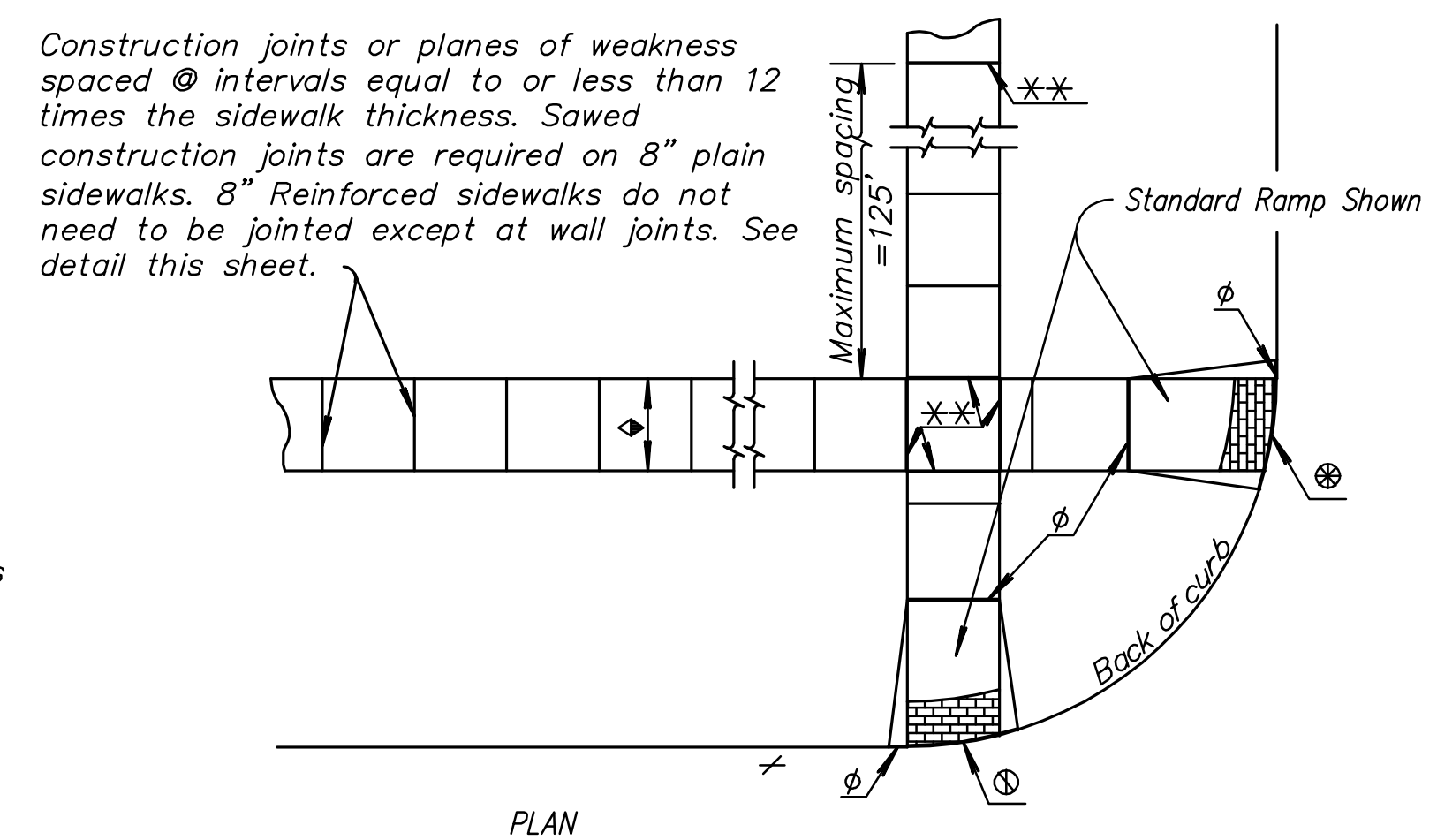
SHEET NO.
24 of 169

- NOTES:**
- Curb cut ramps are to be located as shown on the plans or as directed by the Engineer. The normal gutter line profile shall be maintained through the area of the ramp.
 - Care shall be taken to assure a uniform grade on the ramp, free of sags and short grade changes.
 - Expansion joints shall be placed in sidewalks as follows: In long runs, expansion joints shall be 3/4" redwood boards flush with the surface, at a maximum spacing of 125'. This same joint should be used at sidewalk junctions as shown in Typical Plan. Where the end of the sidewalk abuts a curb, a 3/4" redwood board flush with the surface shall be used.
 - Where the sidewalk is parallel and adjacent to a rigid structure, a 1/2" premoulded joint filler (Non-extruding, Type B) shall be used.
 - Sidewalk shall slope toward the street at a maximum of 1:50, and where necessary, may be de-pressed or sloped to fit alleys and entrances as shown on the plans or as directed by the Engineer.
 - Where clear width of sidewalk between top of ramp and building or other obstruction is less than 48 inches, the slope of the flared sides shall not exceed 1:12.
 - Doweled isolation joints shall be used at all construction joints on 8" sidewalk sections.



SIDEWALK SECTION AT BACK-OF-CURB

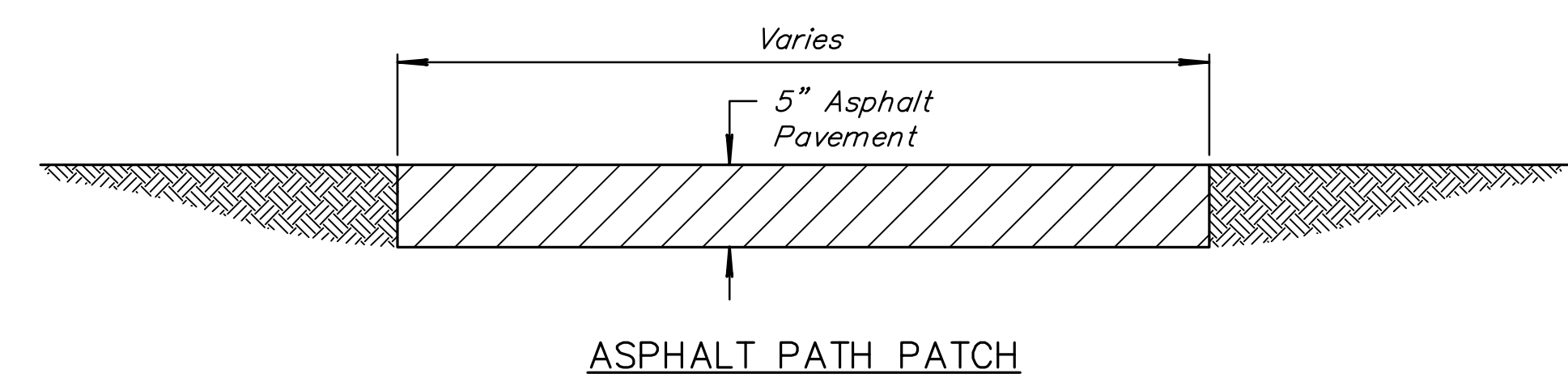
Note: This detail also applies to sidewalk abutting Transition Rail. Depth of thickening will extend to bottom of concrete approach slab pavement.



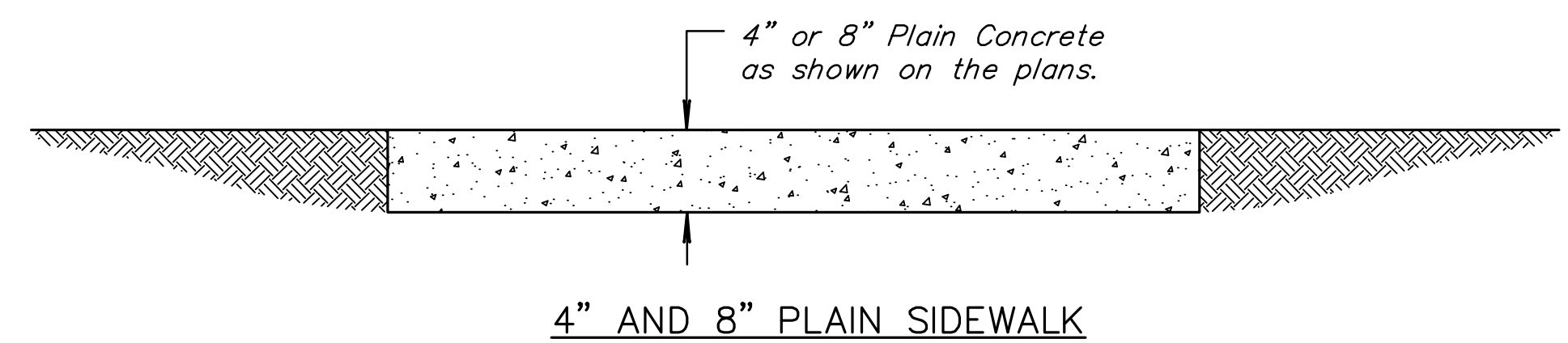
SIDEWALK

NOTES:

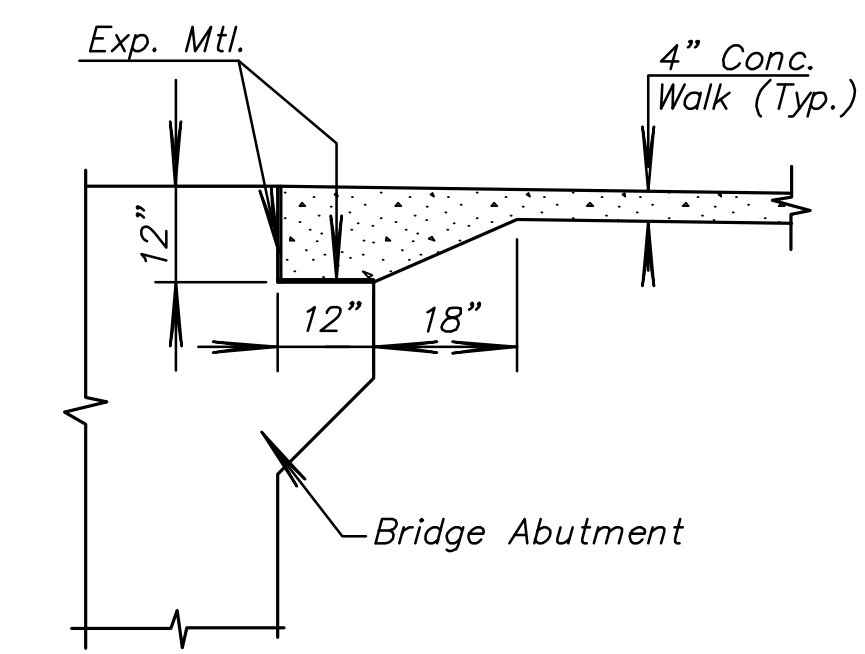
- Sidewalk shall always have a cross-slope of 1/4 inch per foot or less, even through driveways unless directed otherwise by the Engineer.
- ** Expansion joint: 4" sidewalk - 3/4" redwood board, 8" sidewalk - Doweled isolation joint (See sheet ___)
- ◇ Variable width (See plan)
- ϕ Expansion Joint (3/4" Redwood board) placed at either back of curb line or at sidewalk line.
- ⊗ Detectable warning installation is typical and required on Sidewalk Ramps. Refer to Ramp Detail sheet.



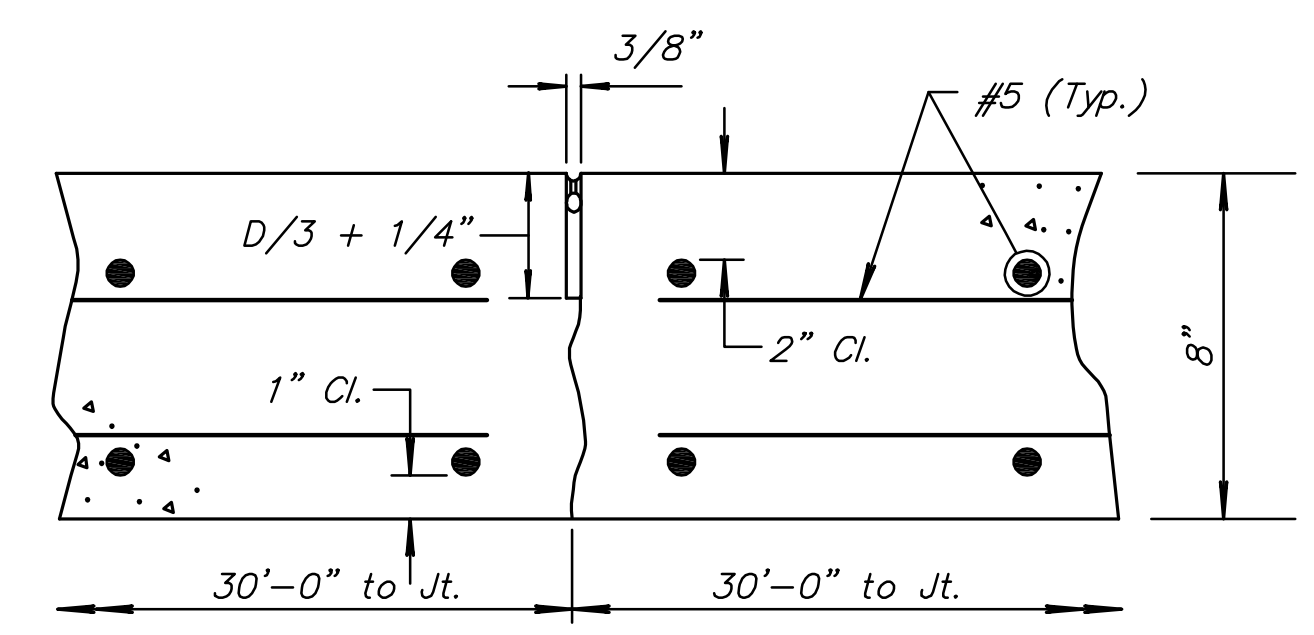
ASPHALT PATH PATCH



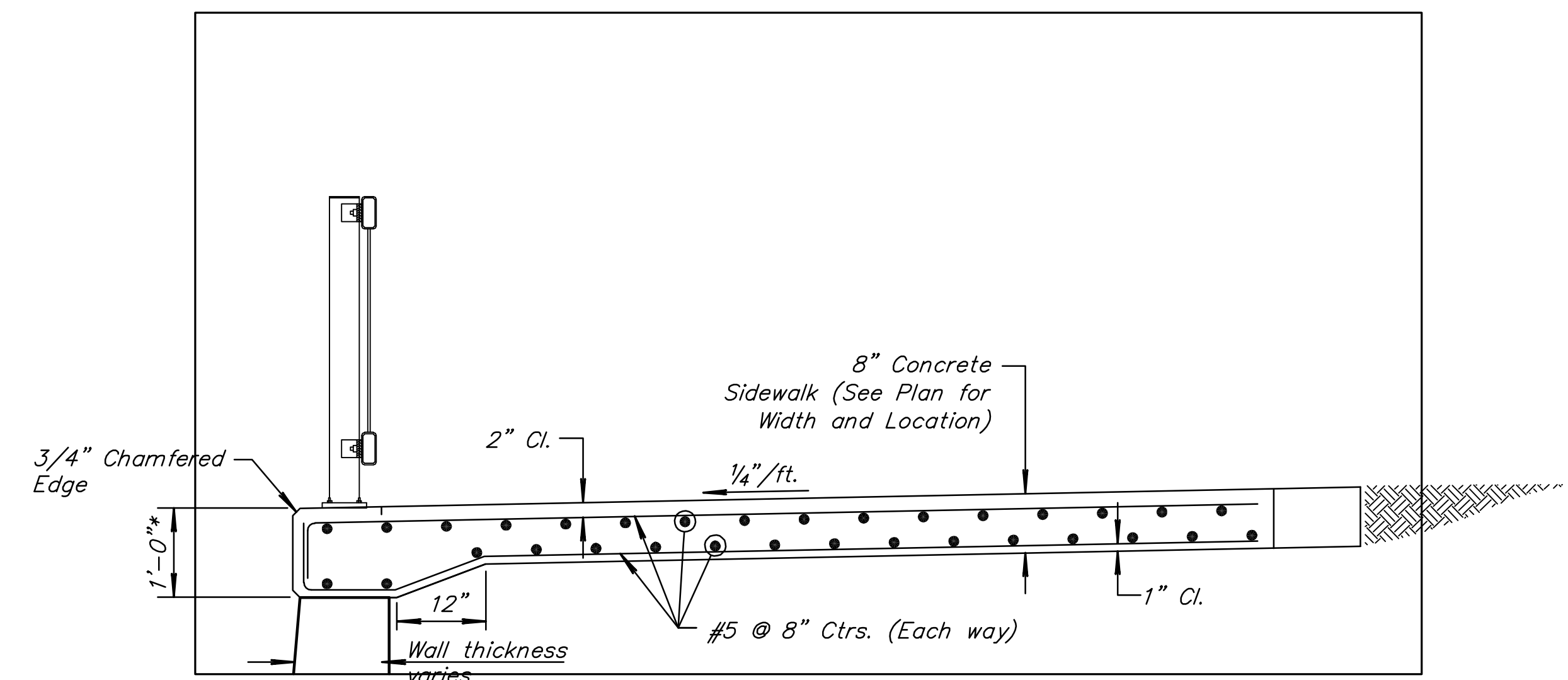
4" AND 8" PLAIN SIDEWALK



SIDEWALK AT BRIDGE ABUTMENT



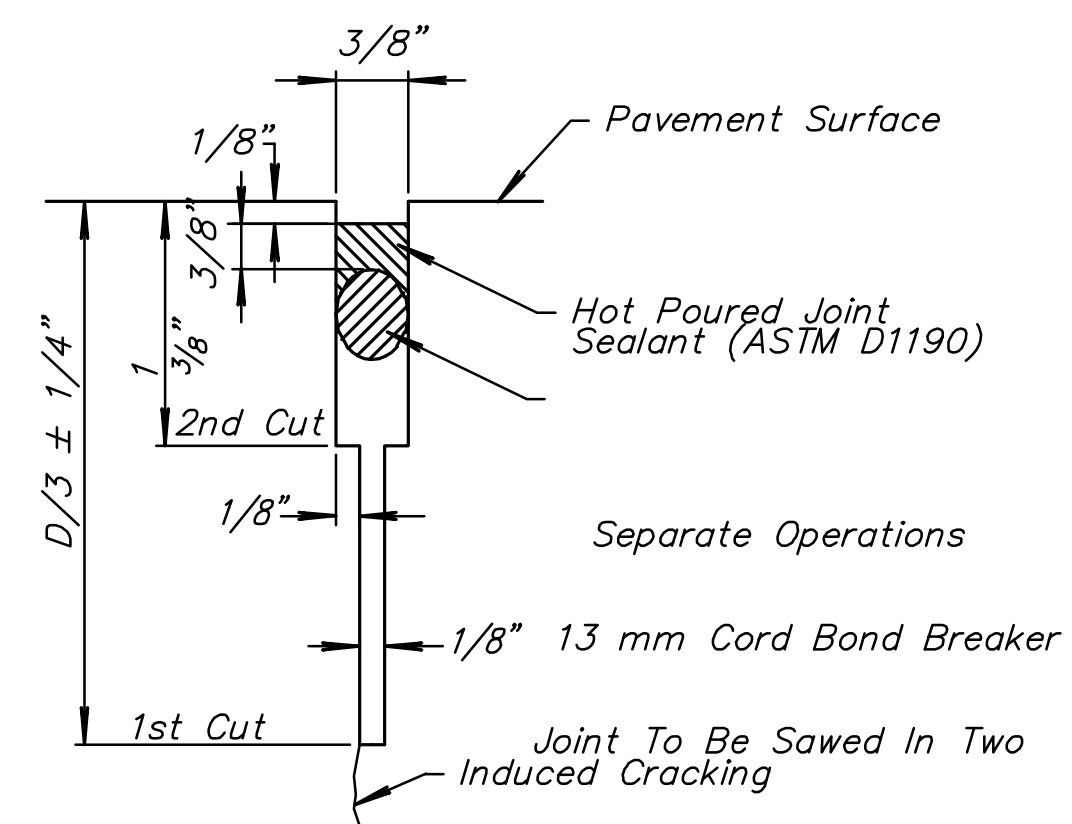
SAWED TRANSVERSE JOINT FOR WALKS ABUTTING AND CAPPING WALLS



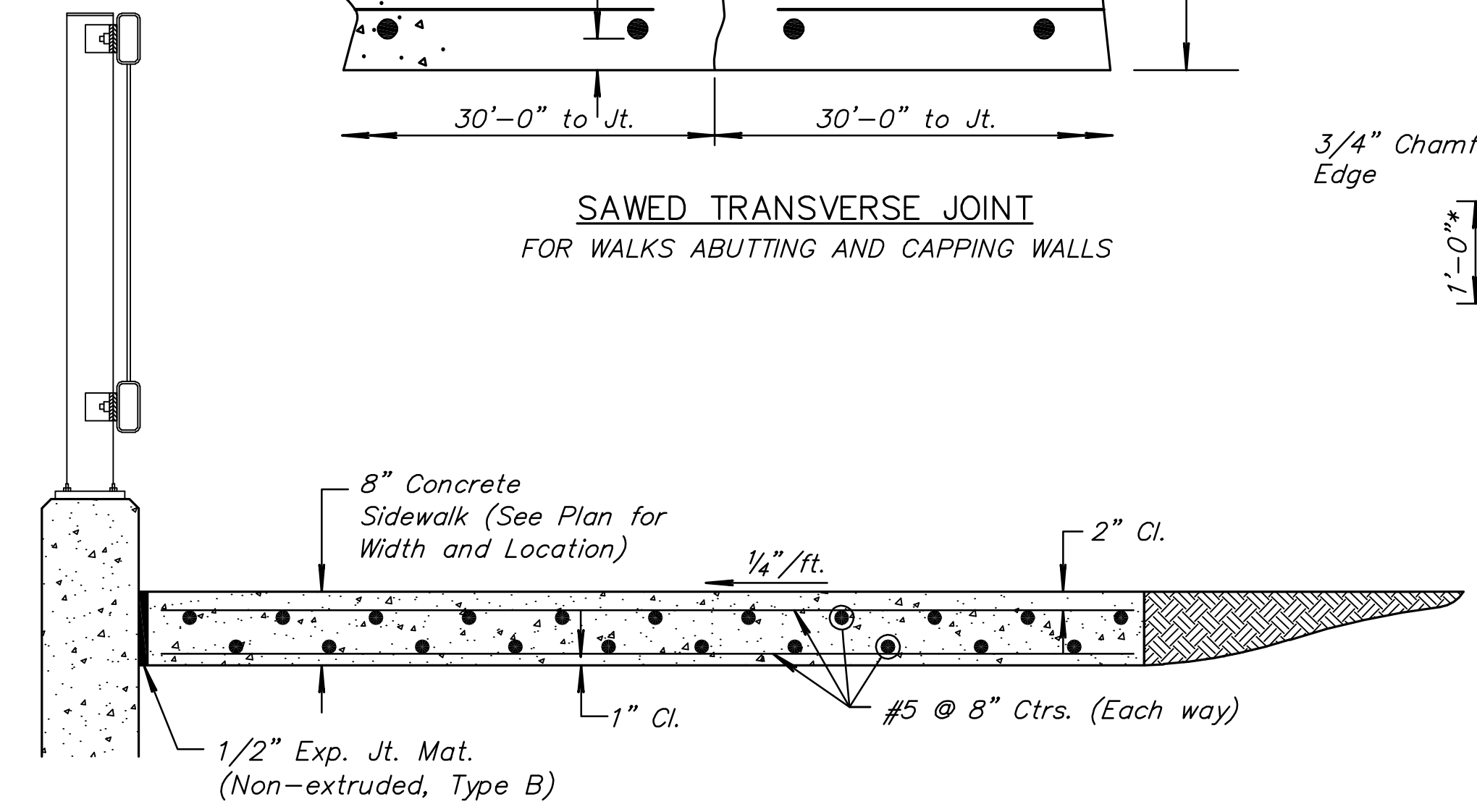
8" SIDEWALK CAPPING WALLS

* Thickness to vary along Palisade Cul-de-sac to achieve plan elevations.
≠ Walk slopes opposite direction around Palisade Cul-de-sac.

NOTE:
All 8" sidewalk shall have a prepared subgrade as outlined on sheet 3, "Foundation Treatment and Compaction of Earthwork". Cost of subgrade preparation is Subsidiary to the cost of 8" sidewalk



SAW JOINT DETAIL



8" WALK ABUTTING WALLS

PLOTED: Tuesday, January 25, 2011 8:52AM

J:\CIVIL\07433\DWG\BRIDGE\PAV\07433_SIDWALK_PATH_DTLS.DWG