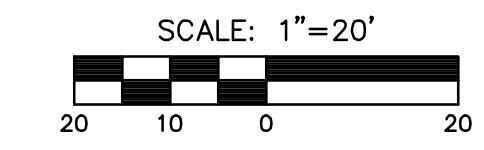
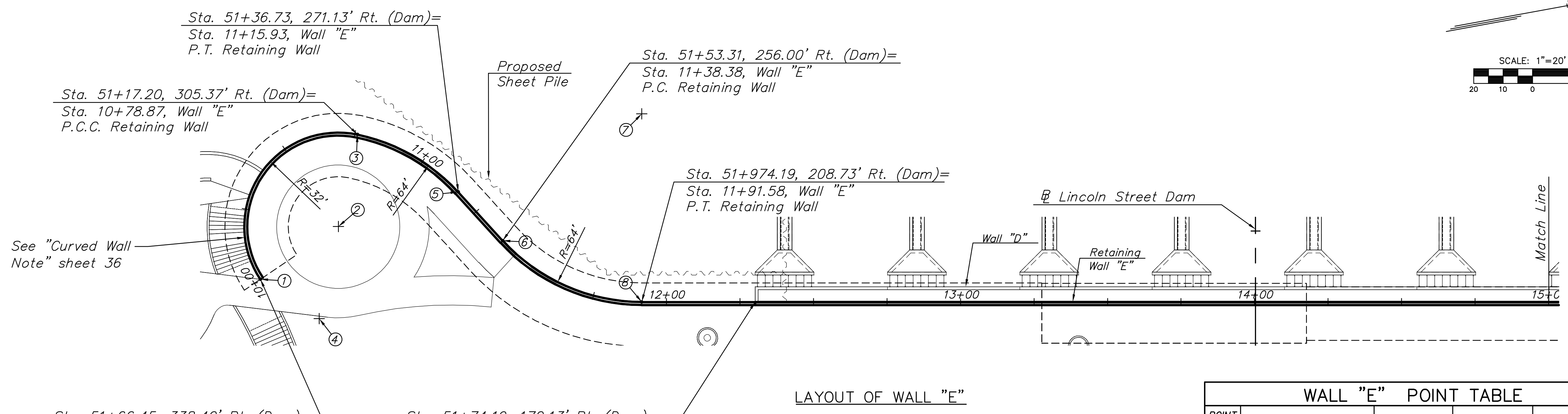
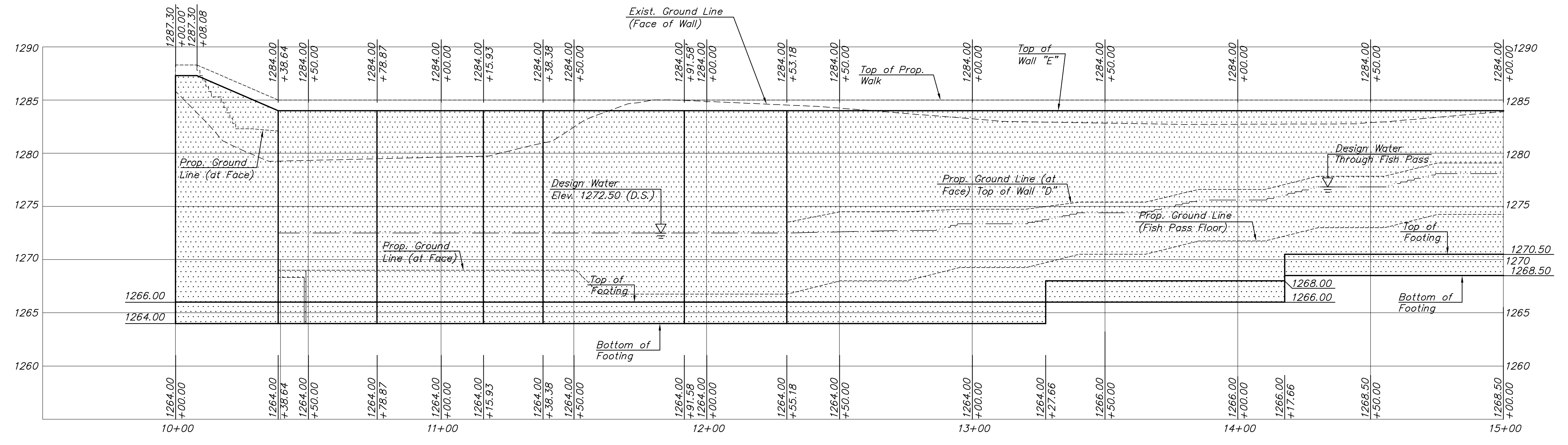


STATE	PROJECT NO.	YEAR	SHEET NO.	TOTAL SHEETS
KANSAS	87 N-0361-01	2011	39	169

**MKEC**  
ENGINEERING  
CONSULTANTS, INC.  
411 N. WEBB ROAD  
WICHITA, K.S. 67206  
316-684-9600



POINT NO.	STATION/OFFSET	NORTHING	EASTING	REMARKS
1	10+00.00 / 0.00' Rt.	1680030.6558	1647246.0957	PC
2	10+13.22 / 32.00' Rt.	1680059.9630	1647233.2469	Radius Point
3	10+75.87 / 0.00' Rt.	1680072.0356	1647203.6116	PRC
4	11+15.93 / 64.00' Rt.	1680047.8904	1647262.8822	Radius Point
5	11+15.93 / 0.00' Rt.	1680102.1829	1647228.9953	PT
6	11+38.38 / 0.00' Rt.	1680114.0709	1647248.0419	PC
7	11+73.53 / 64.00' Lt.	1680168.3634	1647214.1550	Radius Point
8	11+91.58 / 0.00' Rt.	1680156.8050	1647277.1026	PT



**LINCOLN STREET BRIDGE AND  
DAM IMPROVEMENTS OVER  
ARKANSAS RIVER**

**CAST-IN-PLACE  
CONCRETE  
RETAINING  
WALL "E"**

SHEET TITLE

472-84883

PROJECT NUMBER

JRA  
DESIGN BY

DPG  
DRAWN BY

KJS  
CHECKED BY

ISSUED

1/24/2011

REVISED

SHEET NO.

39 of 169

PLOTTED: Tuesday, January 25, 2011 8:58:50AM

J:\CIVIL\07433\DWG\BRIDGE\PAV\07433\_MSE\_RETAIN\_WALL\_E1.DWG