

STATE	PROJECT NO.	YEAR	SHEET NO.	TOTAL SHEETS
KANSAS	87 N-0361-01	2011	48	169

MKEC
ENGINEERING
CONSULTANTS, INC.
411 N. WEBB ROAD
WICHITA, KS. 67206
316-684-9600

**LINCOLN STREET BRIDGE AND
DAM IMPROVEMENTS OVER
ARKANSAS RIVER**

**DRY-STACK
RETAINING
WALLS 'N' & 'O'**
SHEET TITLE
472-84883
PROJECT NUMBER

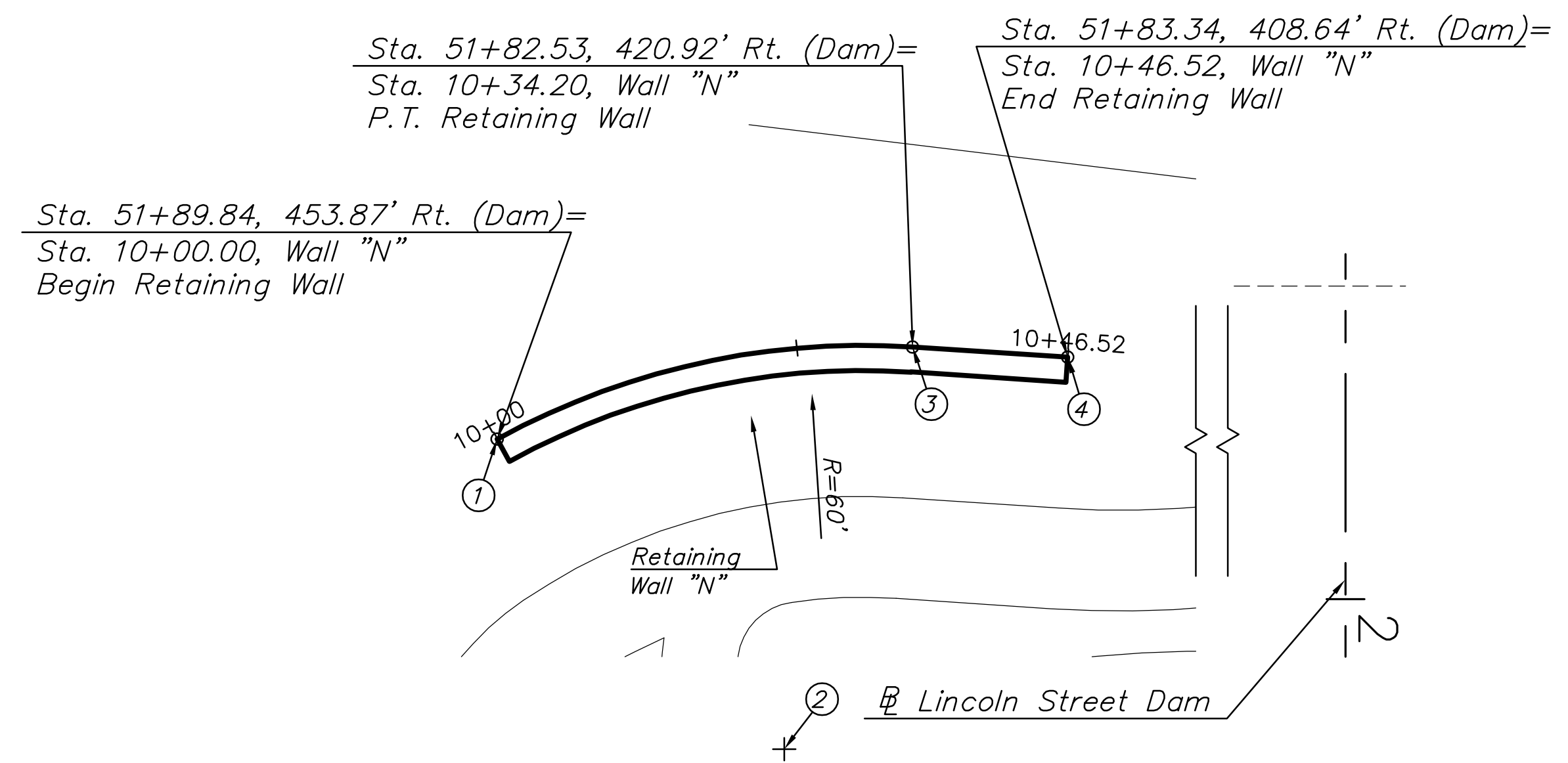
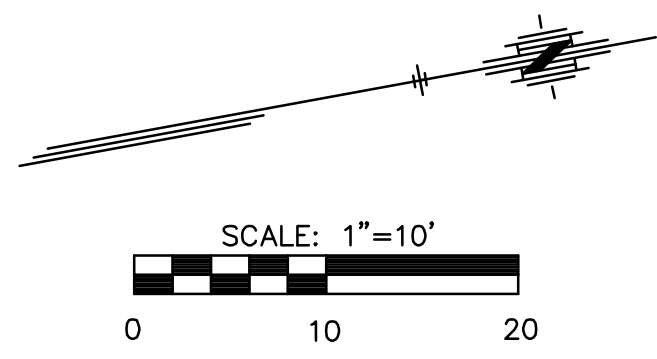
JRA
DESIGN BY
DPG
DRAWN BY
KJS
CHECKED BY

ISSUED
1/24/2011
REVISED

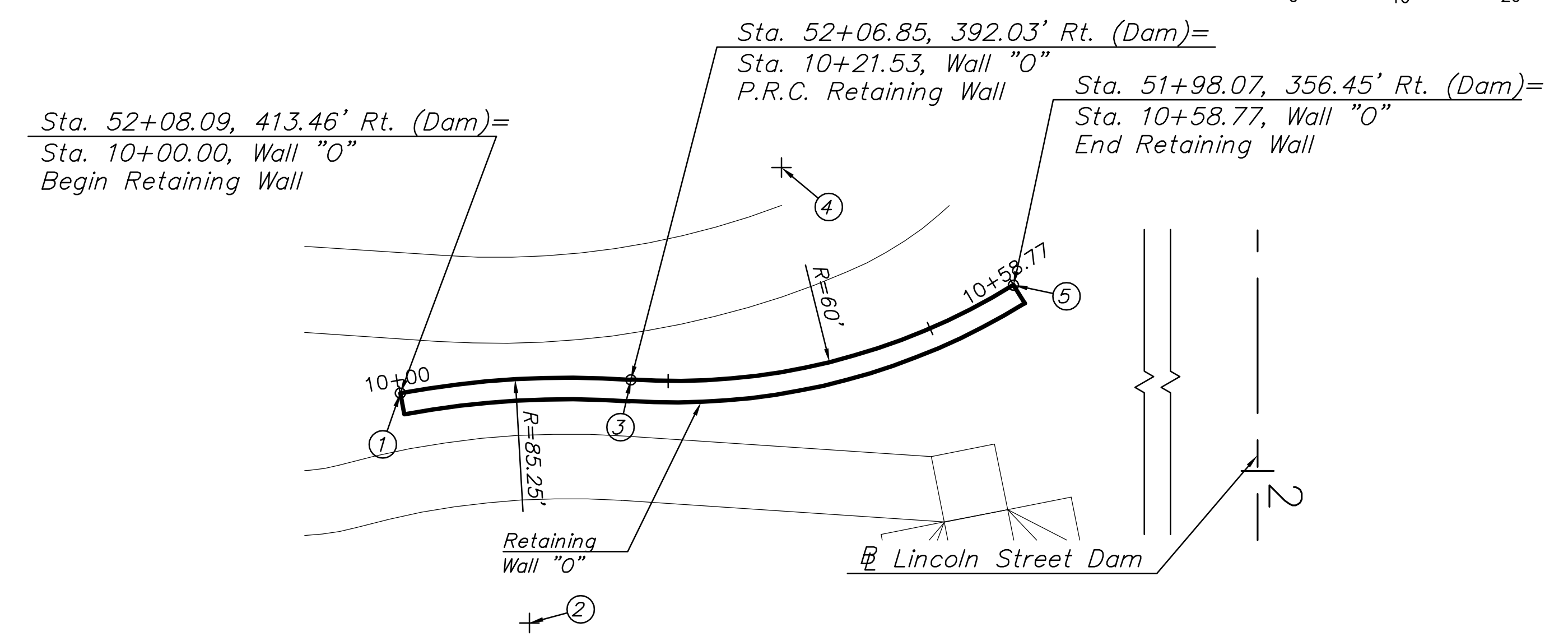
SHEET NO.
48 of 169

POINT NO.	STATION/OFFSET	NORTHING	EASTING	REMARKS
1	10+00.00 / 0.00' Rt.	1679912.8661	1647248.2604	PC
2	10+19.33 / 60.00' Rt.	1679931.8592	1647305.1750	Radius Point
3	10+34.20 / 0.00' Rt.	1679946.5862	1647247.0104	PT
4	10+46.52 / 0.00' Rt.	1679958.5217	1647250.0324	End of Wall

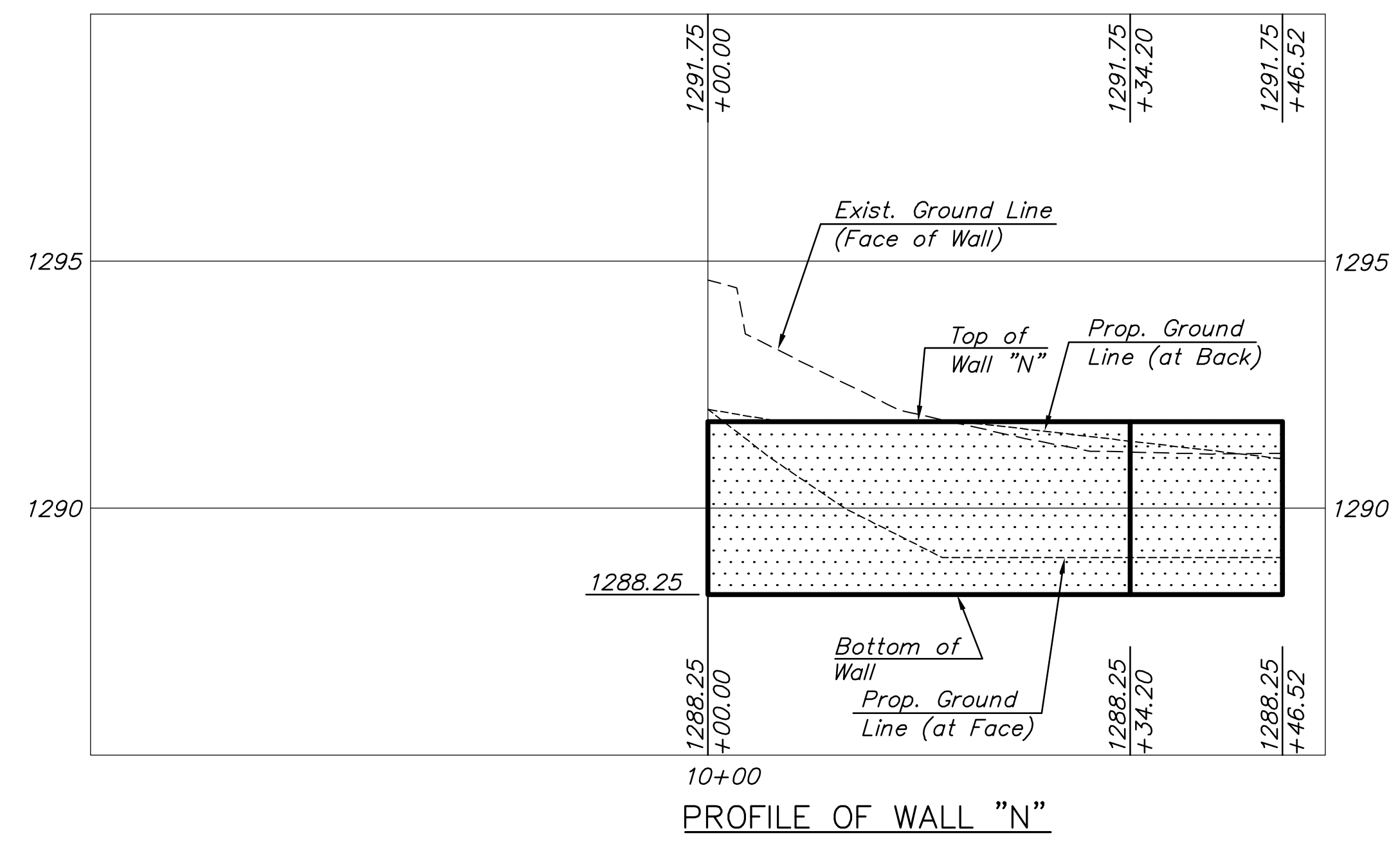
POINT NO.	STATION/OFFSET	NORTHING	EASTING	REMARKS
1	10+00.00 / 0.00' Rt.	1679949.3119	1647273.5049	PC
2	10+21.53 / 85.25' Rt.	1679949.5438	1647358.7546	Radius Point
3	10+21.53 / 0.00' Rt.	1679970.6179	1647276.1504	PRC
4	10+21.53 / 60.00' Lt.	1679985.4500	1647218.0126	Radius Point
5	10+58.77 / 0.00' Rt.	1680007.2017	1647273.9310	PT



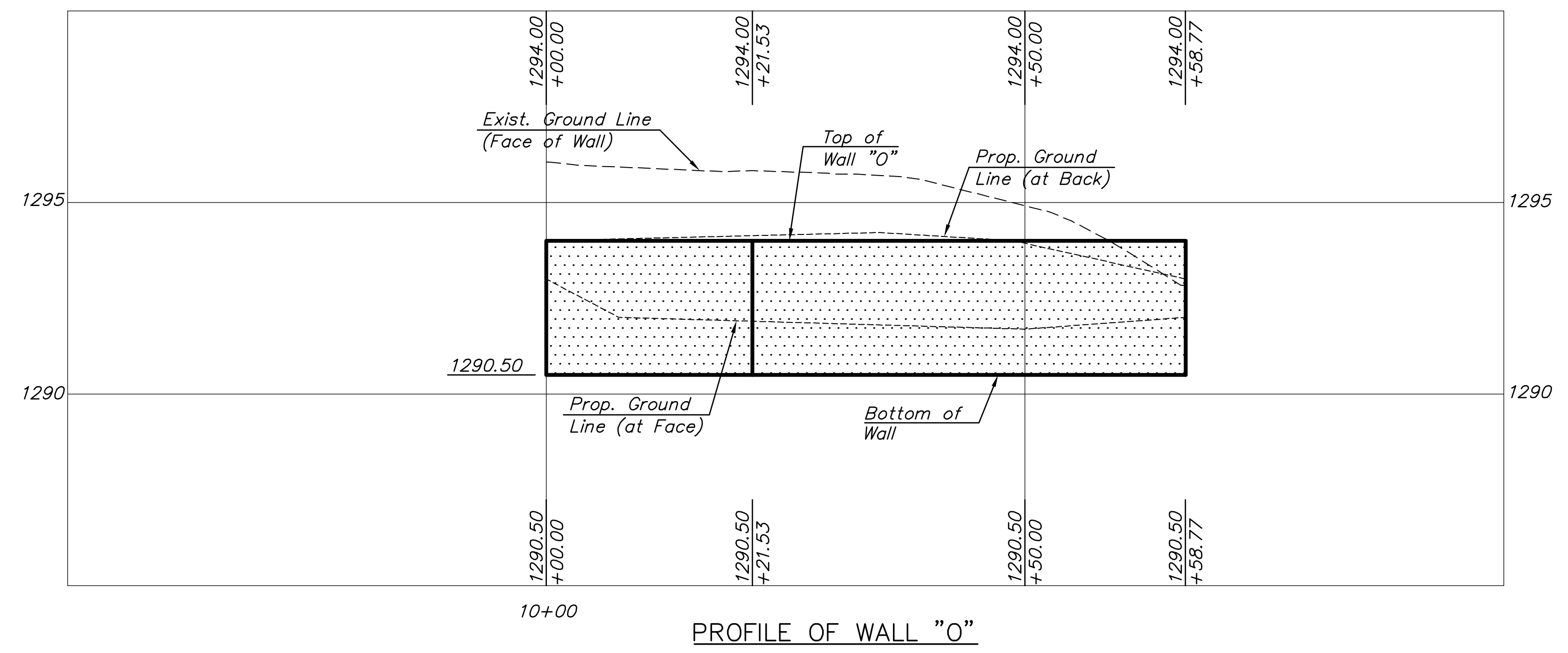
LAYOUT OF WALL "N"



LAYOUT OF WALL "O"



PROFILE OF WALL "N"



PROFILE OF WALL "O"

PLOTTED: Tuesday, January 25, 2011 9:08:49AM

J:\CIVIL\07433\DWG\BRIDGE\PAV\07433_CIP_RETAIN_WALL_NO.DWG