

P.O.T. Sta. 7+50.00  
 1. N 1680572.6747,  
 E 1646942.8500  
 2. Not Set

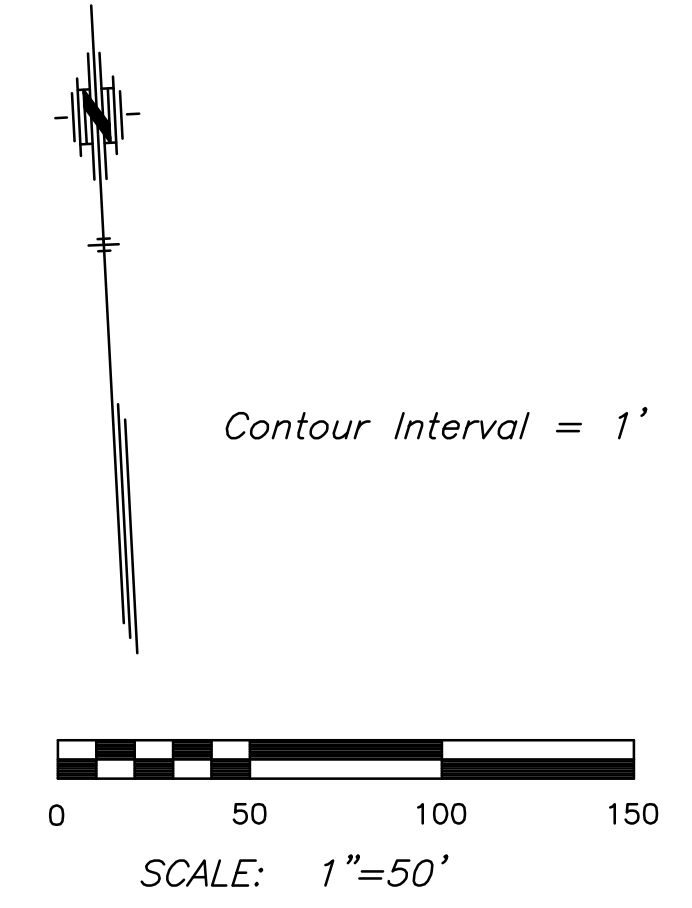
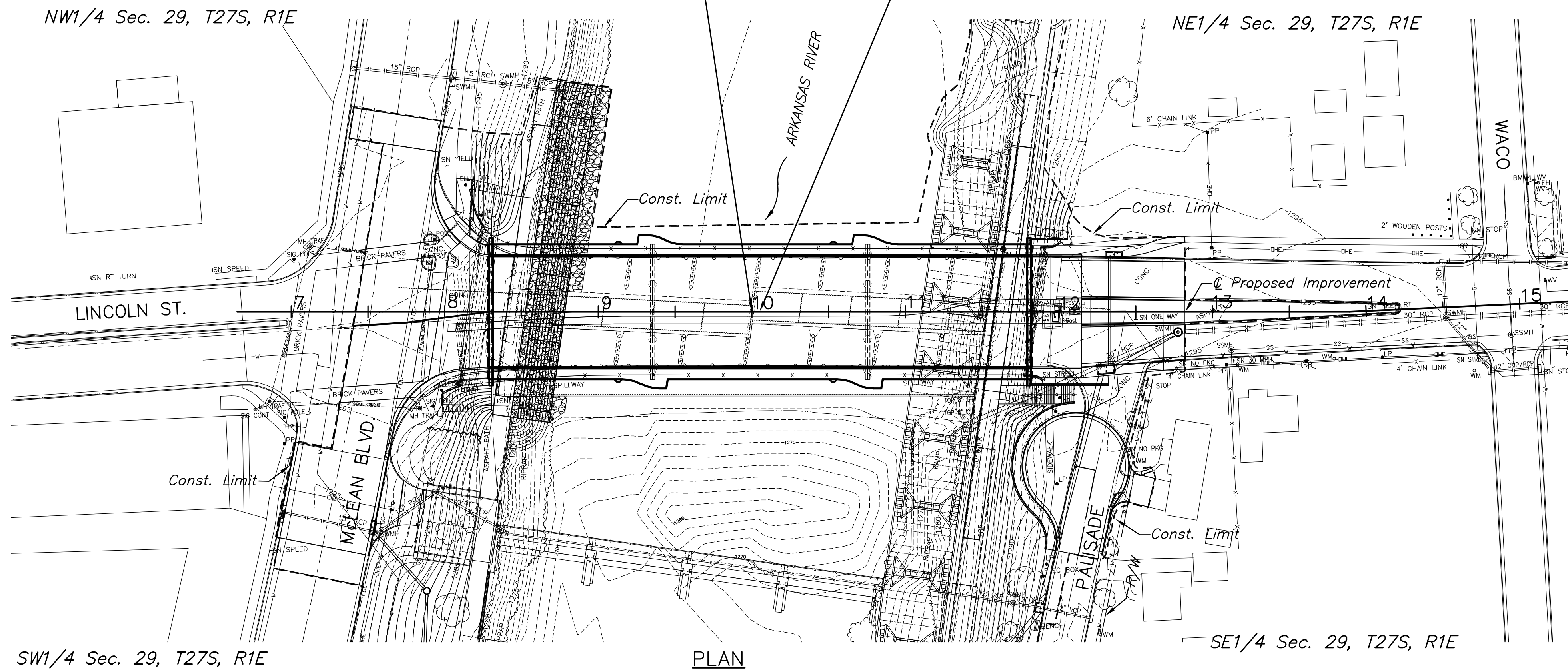
Sta. 10+00.00 Remove  
 Br. No. 53040087000AR50  
 25'-33'-6 @ 42'-33'-25'  
 Reinf. Conc. Slab Spans  
 8' Skew Rt., 70' Roadway  
 Remove Bascule Dam

Sta. 10+05.30 Construct  
 Br. No. 53040087000AR50  
 105'-140'-105' Parabolic Haunched  
 Weathered Steel Welded Plate Girder  
 72'-0" Roadway,  
 6'-0" Walkway, Lt. and Rt.

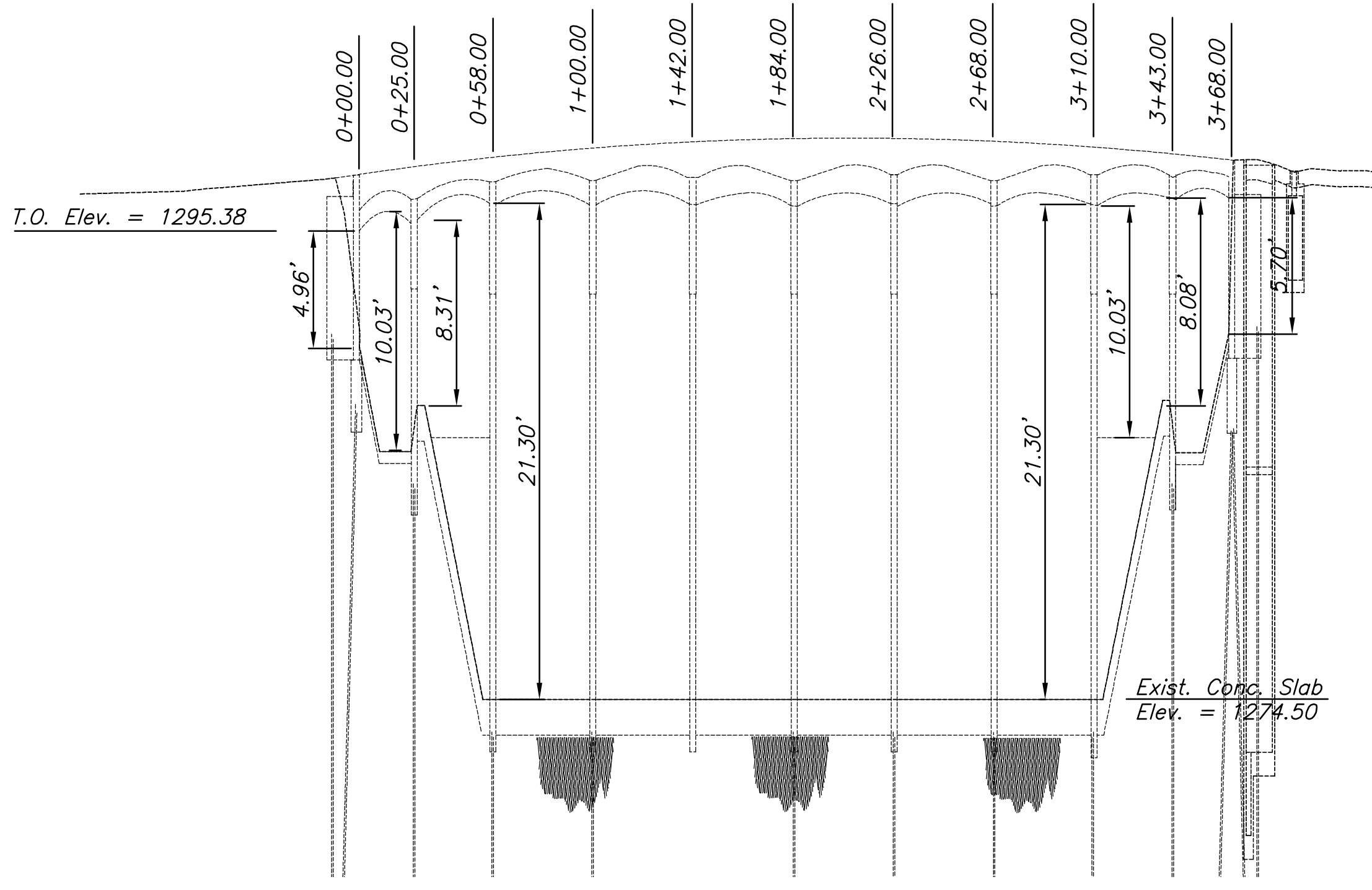
P.I. Sta. 13+89.26  
 1. N 1680545.2582  
 E 1647581.5170  
 2. Not Set

STATE	PROJECT NO.	YEAR	SHEET NO.	TOTAL SHEETS
KANSAS	87 N-0361-01	2011	52	169

**MKEC**  
 ENGINEERING  
 CONSULTANTS, INC.  
 411 N. WEBB ROAD  
 WICHITA, K.S. 67206  
 316-684-9600



HIGHWATER INFORMATION  
 Highwater elevation is unavailable



**EXISTING ARKANSAS RIVER**  
 Waterway Opening of Bridge  
 At @ Sta. 10+00.00  
 Area = 5229 sq. ft.

**UTILITIES**

AT&T  
 Attn: John Fagan  
 154 N. Broadway, Room 210  
 Wichita, Ks. 67202  
 Phone (316) 268-2102

C.O.W. Water/Sewer  
 Attn: Greg Lolley  
 455 N. Main St.  
 Wichita, Kansas 67202  
 Phone (316) 268-4555

C.O.W. Storm Sewer  
 Attn: Jeff Rupp  
 455 N. Main St.  
 Wichita, Kansas 67202  
 Phone (316) 268-4326

Kansas Gas Service  
 Attn: James Coe  
 1021 East 26th Street North  
 Wichita, Kansas 67219  
 Phone (316) 832-3126

Westar Energy  
 Attn: Miles Capps  
 1900 E. Central  
 Wichita, Kansas 67201  
 Phone (316) 261-6824

**LINCOLN STREET BRIDGE AND  
 DAM IMPROVEMENTS OVER  
 ARKANSAS RIVER**

**CONTOUR  
 MAP**  
**STA. 10+05.30**  
 SHEET TITLE  
 472-84883  
 PROJECT NUMBER

JAG  
 DESIGN BY  
 DPG  
 DRAWN BY  
 KJS  
 CHECKED BY

ISSUED  
 1/24/2011  
 REVISED

SHEET NO.  
**52 of 169**