

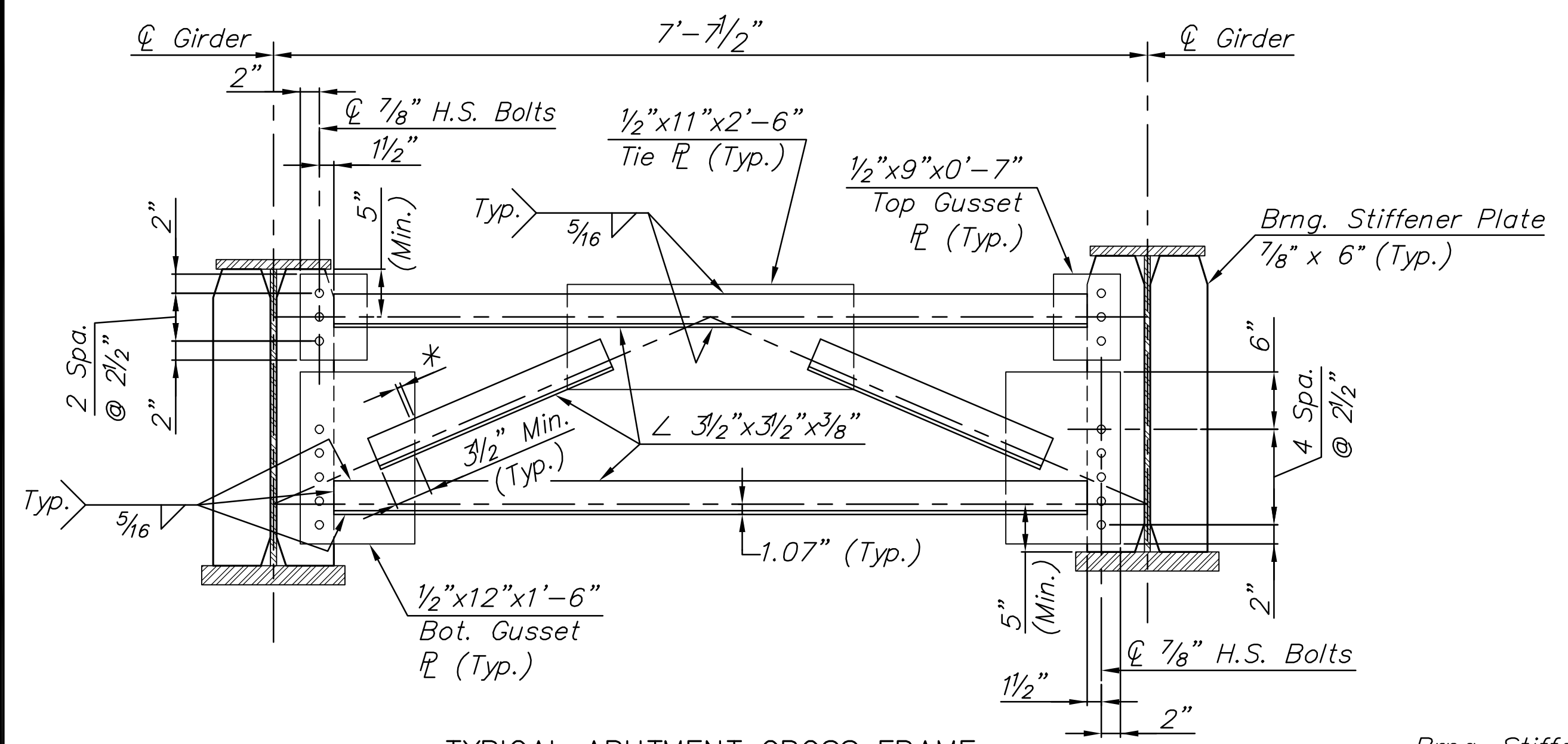
**LINCOLN STREET BRIDGE AND
DAM IMPROVEMENTS OVER
ARKANSAS RIVER**

**LINCOLN ST. BRIDGE
CROSS FRAME
DETAILS**
SHEET TITLE
472-84883
PROJECT NUMBER

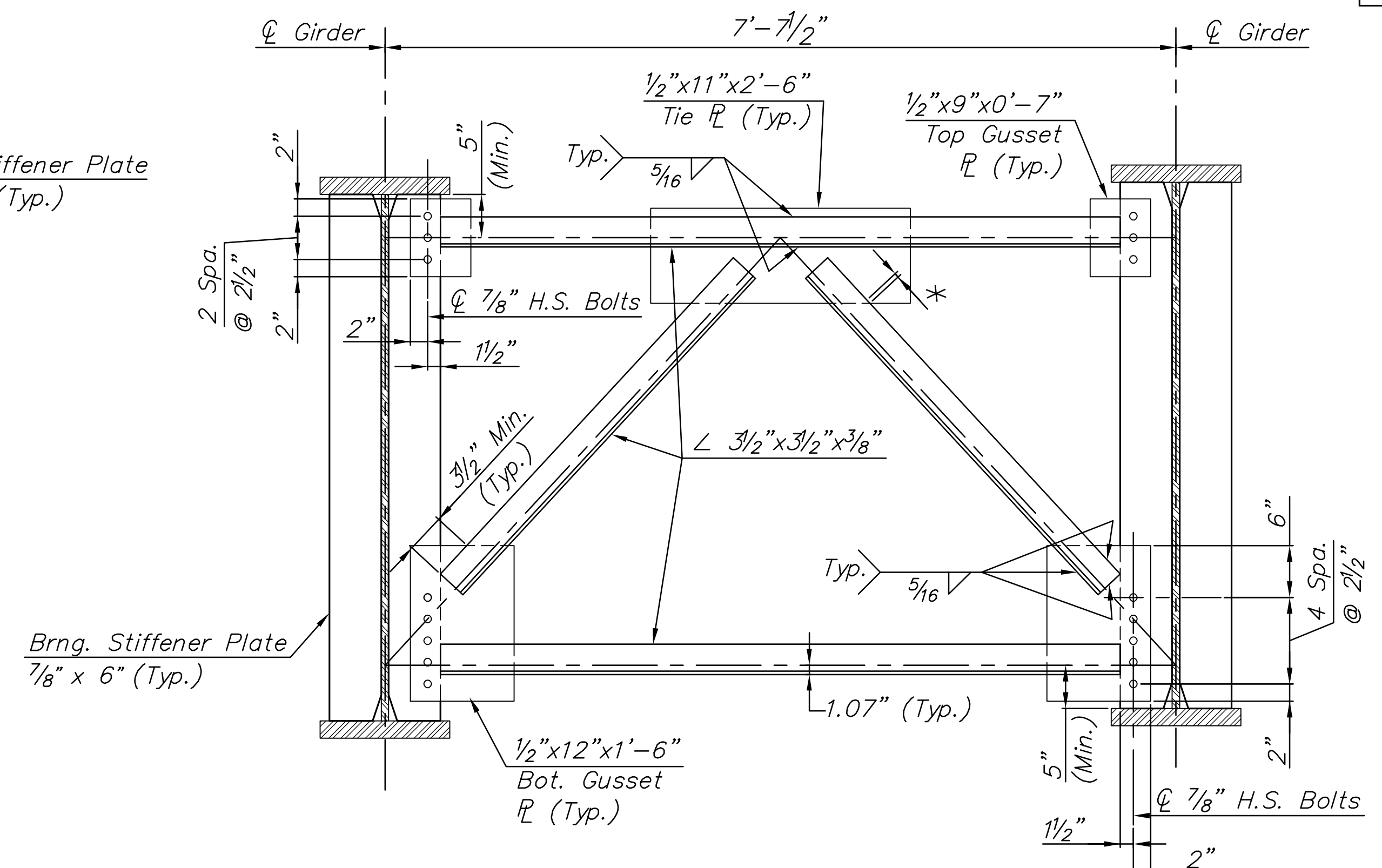
DESIGN BY: **KJS**
DRAWN BY: **DMU**
CHECKED BY: **KJS**

ISSUED: **1/24/2011**
REVISED:

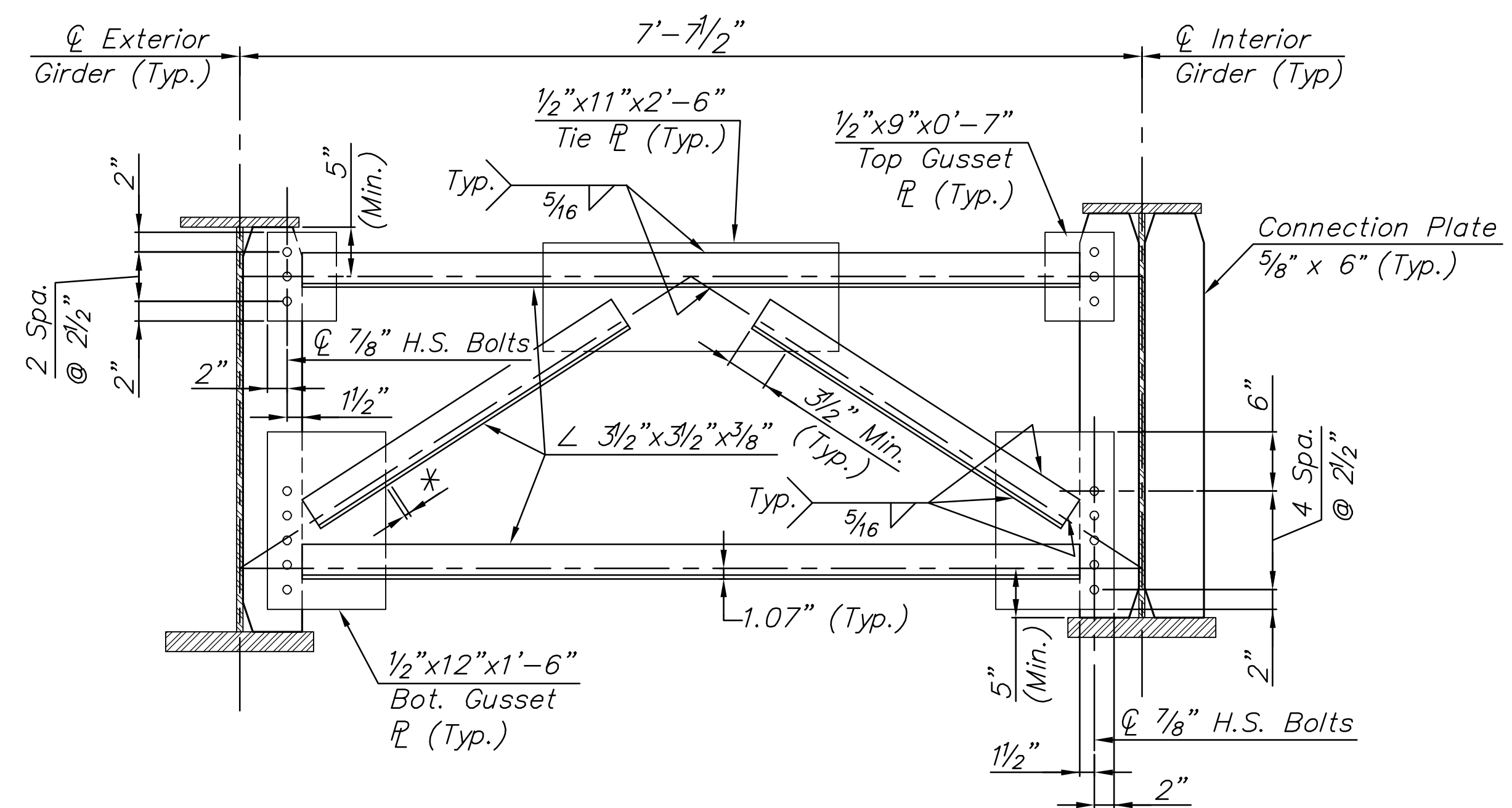
SHEET NO.
62 of 169



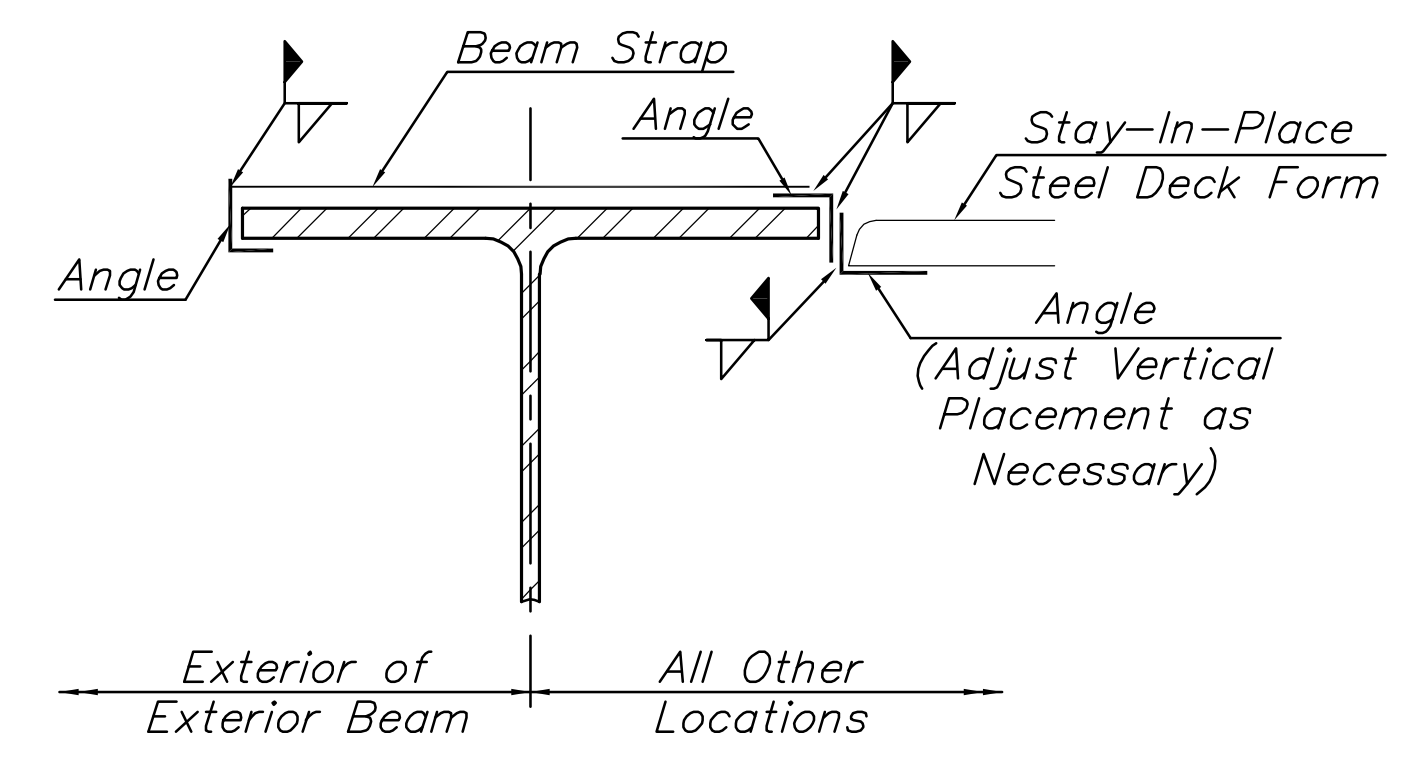
TYPICAL ABUTMENT CROSS FRAME
(16 - 7/8" Dia. H.S. bolts per cross frame)
* Terminate weld 1/2" short of edges (Typ.)



TYPICAL PIER CROSS FRAME
(16 - 7/8" Dia. H.S. bolts per cross frame)
* Terminate weld 1/2" short of edges (Typ.)



INTERMEDIATE CROSS FRAME
(16 - 7/8" Dia. H.S. bolts per cross frame)
* Terminate weld 1/2" short of edges (Typ.)



**STAY-IN-PLACE STEEL DECK FORM
FLANGE CONNECTION DETAIL**

NOTE:
Do not weld to the top flange or studs. Report any arc strike, weld splatter or welding on top flange to Engineer immediately.

STAY-IN-PLACE DECK FORM NOTES:

The Contractor may use Stay-In-Place Deck Forms if the minimum Deck Slab thickness of 8" is obtained by measuring from the top of the Deck Slab to the top portion of the steel corrugation. Preferred Corrugation Filler, composed of Polystyrene or other material, may be used if bonded to the Deck Forms. No additional concrete weight of the Deck Slab is permitted. The total additional weight of the Deck Form and Filler shall not exceed 5 p.s.f. Costs of Stay-In-Place Steel Deck Forms to be included in the contract unit price of Concrete Grade 4.0 AE SA. Galvanize Stay-in-Place Form Items in accordance with AASHTO M111.

The Contractor may substitute Stay-In-Place Steel Deck Forms at no additional cost to the city, if the following condition is met:

1. The Engineer approves shop drawings and structural calculations for the forms, submitted by the Contractor, that are sealed by a Professional Engineer licensed in the State of Kansas.

Item	AASHTO M270M Gr. 50W T3
Girder Webs	406,540
Girder Flanges	678,700
Web Splice Plates	11,340
Flange Splice Plates	52,280
Web Splice Fill Plates	1,140
Flange Splice Fill Plates	4,740
TOTAL	1,154,740

Item	ASTM A709 Gr. 50W
Abutment Bearing Stiffeners	2,160
Pier Bearing Stiffeners	4,320
Intermediate Conn. Plates	25,640
Abutment Cross Frame	4,940
Intermediate Cross Frame	61,200
Pier Cross Frame	5,640
Drip Plates	140
TOTAL	104,040

Item	ASTM A709 Gr. 50
Pier Bearing Device	6,400
TOTAL	6,400

PLOT: Friday, January 28, 2011 10:02:49PM

J:\CIVIL\07433\DWG\BRIDGE\PLANS\07433_CROSS_FRAME_DTL.DWG