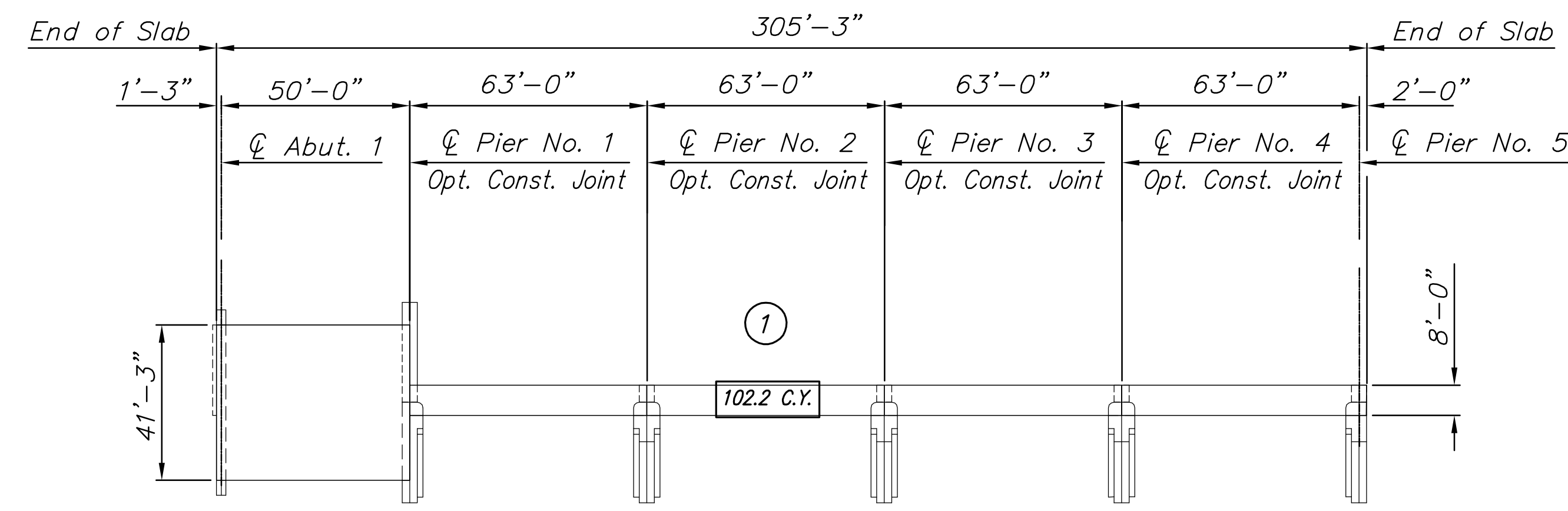


STATE	PROJECT NO.	YEAR	SHEET NO.	TOTAL SHEETS
KANSAS	87 N-0361-01	2011	99	169

MKEC
ENGINEERING
CONSULTANTS, INC.
411 N. WEBB ROAD
WICHITA, K.S. 67206
316-684-9600



CONCRETE PLACING SEQUENCE (FOR INFORMATION ONLY)

Note: Quantities shown are approximate volumes of 8" deck, not including fillets over beams, diaphragms, and wingwalls.
The sequence of placing the concrete shall be as shown, or the Contractor may submit an alternate placing sequence to the Engineer for review.

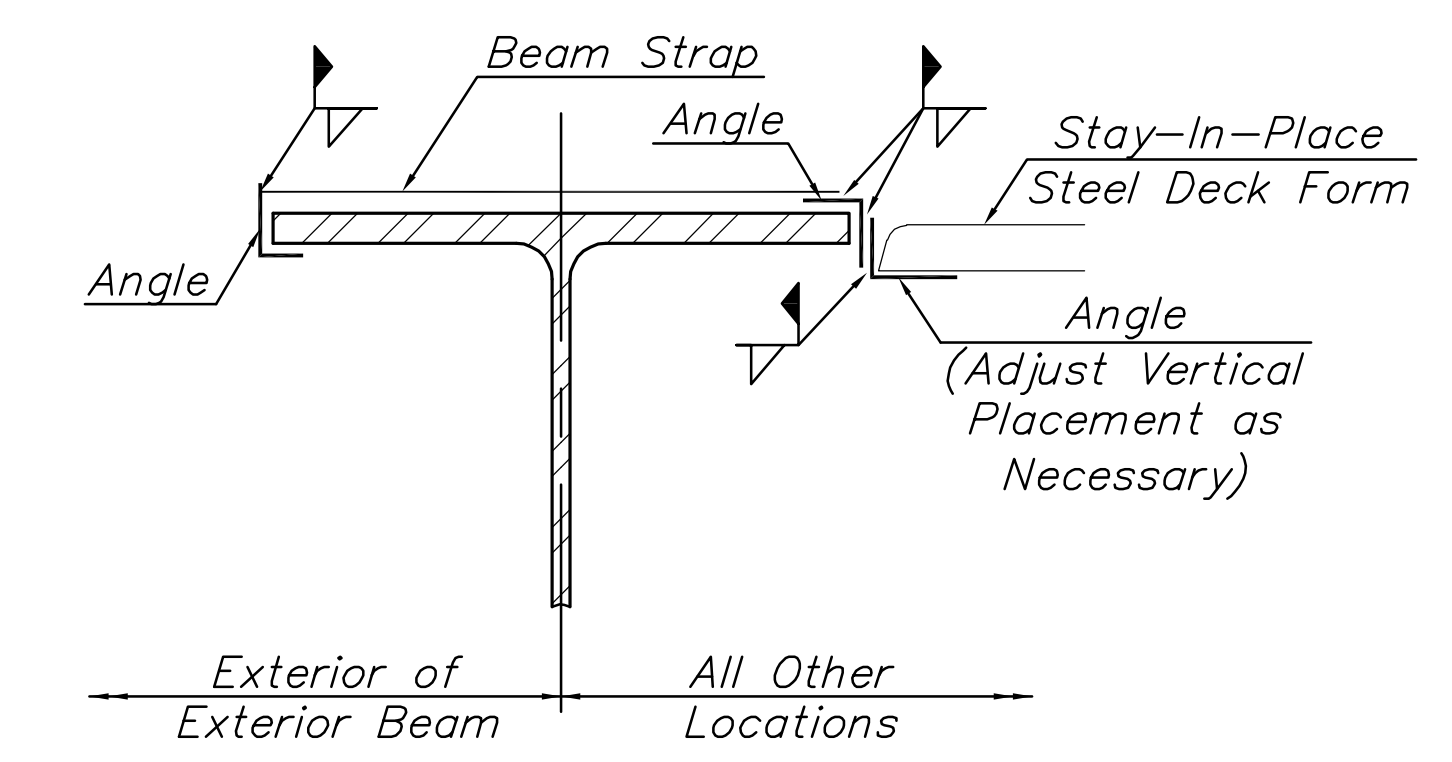
DEAD LOAD CAMBER NOTE:

50' Span = 1"
63' Span = 2"

Camber formed by varying the fillet thickness at top of beam.

The amount of concrete for the fillets is not included in the summary of quantities.

The additional concrete required to construct fillets shall be considered *subsidiary* to "Reinforced Concrete Maintenance Structure Deck".



STAY-IN-PLACE STEEL DECK FORM FLANGE CONNECTION DETAIL

NOTE:
Do not weld to the top flange or studs. Report any arc strike, weld splatter or welding on top flange to Engineer immediately.

STAY-IN-PLACE DECK FORM NOTES:

The Contractor may use Stay-In-Place Deck Forms if the minimum Deck Slab thickness of 8" is obtained by measuring from the top of the Deck Slab to the top portion of the steel corrugation. Preferred Corrugation Filler, composed of Polystyrene or other material, may be used if bonded to the Deck Forms. No additional concrete weight of the Deck Slab is permitted. The total additional weight of the Deck Form and Filler shall not exceed 5 p.s.f. Costs of Stay-In-Place Steel Deck Forms to be included in the contract unit price of Concrete Grade 4.0 AE SA. Galvanize Stay-in-Place Form Items in accordance with AASHTO M111.

The Contractor may substitute Stay-In-Place Deck Forms at no additional cost to the city, if the following condition is met:

- The Engineer approves shop drawings and structural calculations for the forms, submitted by the Contractor, that are sealed by a Professional Engineer licensed in the State of Kansas.

**LINCOLN STREET BRIDGE AND
DAM IMPROVEMENTS OVER
ARKANSAS RIVER**

**MAINTENANCE
STRUCTURE
MISCELLANEOUS
DETAILS**

SHEET TITLE
472-84883
PROJECT NUMBER

DESIGN BY: JAG
DRAWN BY: DPG
CHECKED BY: KJS

ISSUED: 1/24/2011
REVISED:

SHEET NO.
99 of 169