

N: 1,685,293.8124, E: 1,650,023.7188  
 @ Emporia, Sta. 0+44.37, 17.08' Lt.=  
 WL 1, Sta. 0+00.00  
 Remove 12" Cap from existing 12" Waterline \*  
 and begin new water main installation.

N: 1,685,313.8086, E: 1,650,023.3332  
 @ Emporia, Sta. 0+64.37, 17.12' Lt.=  
 WL 1, Sta. 0+20.00  
 1- 12" CI CL MJ 45° Bend  
 Defl.= 45°00'00"

N: 1,685,329.5356, E: 1,650,038.4650  
 @ Emporia, Sta. 0+79.83, 1.71' Lt.=  
 WL 1, Sta. 0+41.82  
 1- 12" CI CL MJ 45° Bend  
 Defl.= 45°00'00"

CAUTION !!!  
 Buried Electric Duct Bank  
 (Westar Energy)

CAUTION!!!  
 Buried Telephone Duct Bank  
 (AT&T)

CAUTION !!!  
 8" Steel Gas Line  
 (KGS)

CAUTION !!!  
 6" Steel Gas Line  
 (Black Hills Energy)

CAUTION !!!  
 Buried CATV  
 (Cox Communications)

N: 1,685,450.5864, E: 1,650,036.1309  
 @ Emporia, Sta. 2+00.88, 1.92' Lt.=  
 WL 1, Sta. 1+62.87  
 1- 2" Service Outlet Assembly  
 See Detail, Sheet 6  
 Top Valve Box El.= 1297.47

N: 1,685,455.2944, E: 1,650,036.0397  
 @ Emporia, Sta. 2+05.61, 1.93' Lt.=  
 WL 1, Sta. 1+67.60  
 1- 12" x 6" CI CL MJ Tee  
 1- 6" Valve Assembly (E)  
 (MJ Gate Valve)  
 Top Valve Box El.= 1297.50

Close Valves and  
 Remove Valve Boxes  
 (Salvage to City)

N: 1,685,519.2912, E: 1,650,034.8055  
 @ Emporia, Sta. 2+69.62, 2.04' Lt.=  
 WL 1, Sta. 2+31.61  
 Horizontal Deflection  
 Defl.= 4°00'00"  
 1- 12" Valve Assembly (N)  
 (Butterfly Valve)  
 Top Valve Box El.= 1298.14

CAUTION !!!  
 Buried Traffic Signal Conduit  
 (City of Wichita)

CAUTION !!!  
 Buried Electric Duct Bank  
 (Westar Energy)

CAUTION !!!  
 24" RCP  
 Storm Water Sewer

CAUTION !!!  
 36" RCP  
 Storm Water Sewer

CAUTION !!!  
 24" RCP  
 Storm Water Sewer

CAUTION !!!  
 Buried Electric Duct Bank  
 (Westar Energy)

CAUTION !!!  
 10" Waterline  
 (City of Wichita)

N: 1,685,656.7532, E: 1,650,022.5257  
 @ Emporia, Sta. 4+07.27, 11.91' Lt.=  
 WL 1, Sta. 3+69.62  
 Horizontal Deflection  
 Defl.= 4°00'00"  
 1- 12" CI CL MJ 11 1/4° Bend (Vert.)  
 Defl.= 12°10'25"

CAUTION !!!  
 15" RCP  
 Storm Water Sewer

N: 1,685,697.1263, E: 1,650,021.7471  
 @ Emporia, Sta. 4+47.65, 11.98' Lt.=  
 WL 1, Sta. 4+10.00  
 1- 12" CI CL MJ 11 1/4° Bend (Vert.)  
 Defl.= 9°47'24"

N: 1,685,707.8965, E: 1,650,014.8500  
 @ Emporia, Sta. 4+58.54, 18.69' Lt.=  
 WL 1, Sta. 4+27.58  
 Existing 8" Water Main \*\*  
 1- 8" x 8" Tapping Sleeve  
 1- 6" Valve Box  
 (To be furnished and set by  
 City of Wichita Water Dept.)  
 Top Valve Box El.= 1297.87

\*\*\* Directional Drill length shown is minimum length.  
 Contractor may extend directional drill limits at his own  
 option and expense. No additional payment will be made  
 for any additional length.

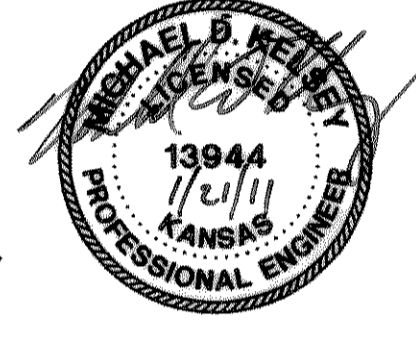
N: 1,685,708.0139, E: 1,650,021.5372  
 @ Emporia, Sta. 4+58.54, 12.00' Lt.=  
 WL 1, Sta. 4+20.89  
 1- 12" x 8" CI CL MJ Tee (Key Blocked)  
 1- 12" Anchored Valve Assembly (N)  
 (Butterfly Valve)  
 Top Valve Box El.= 1297.98  
 Install 3.00'- 12" DI CL MJ Pipe (N)  
 1- 12" CI MJ Cap (N)

10.89'- 12" DI CL MJ Pipe

41.32'- 12" Pipe

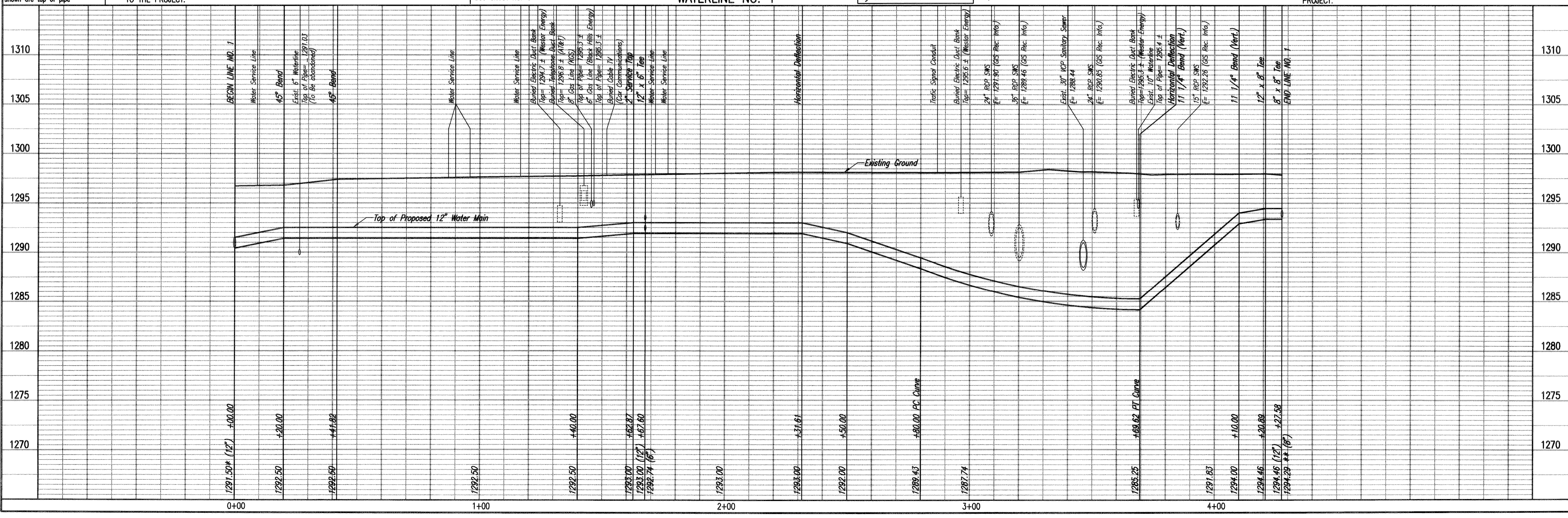
\*\* PRIOR TO BEGINNING CONSTRUCTION, THE CONTRACTOR  
 SHALL EXCAVATE THE EXISTING 8" WATERLINE AT STATION  
 4+27.58 TO VERIFY PIPE SIZE, TYPE, FITTINGS, AND  
 HORIZONTAL AND VERTICAL LOCATION. THE CONTRACTOR  
 SHALL REPORT HIS FINDINGS TO THE ENGINEER SO THAT ANY  
 NECESSARY PLAN MODIFICATIONS CAN BE MADE. ANY  
 ADDITIONAL LABOR OR MATERIALS NECESSARY TO COMPLETE  
 THE CONNECTION SHALL BE CONSIDERED SUBSIDIARY TO THE  
 PROJECT.

X = Denotes Pipe to be abandoned in place.  
 C = Denotes Cap/Plug by the contractor  
 SEE SHEET 6 FOR SERVICE CONNECTIONS  
 AND 2" AND 6" SERVICE LINES



PLAN	CHECKED	DATE
	CHECKED	

PROFILE	CHECKED	DATE
	CHECKED	



\* PRIOR TO BEGINNING CONSTRUCTION, THE CONTRACTOR SHALL EXCAVATE THE EXISTING 12" WATERLINE AT STATION 0+00.00 TO VERIFY PIPE SIZE, TYPE, FITTINGS, AND HORIZONTAL AND VERTICAL LOCATION. THE CONTRACTOR SHALL REPORT HIS FINDINGS TO THE ENGINEER SO THAT ANY NECESSARY PLAN MODIFICATIONS CAN BE MADE. ANY ADDITIONAL LABOR OR MATERIALS NECESSARY TO COMPLETE THE CONNECTION SHALL BE CONSIDERED SUBSIDIARY TO THE PROJECT.

Unless noted otherwise, elevations shown are top of pipe

WATERLINE NO. 1

Professional Engineering Consultants, P.A.  
 303 S. TOPEKA • WICHITA, KANSAS 67202  
 316-262-2691 • FAX 316-262-3003

Job No. 35-10474-0042  
 Date NOVEMBER 2010

Designed By MDK  
 Drawn By RFT

WATER DISTRIBUTION SYSTEM IMPROVEMENTS  
 EMPORIA WATER LINE REPLACEMENT FROM WILLIAM TO DOUGLAS  
 WATERLINE NO. 1

JAMES L. ARMOUR, P.E. - CITY ENGINEER  
 CITY OF WICHITA PROJECT NO. 448-99504

Sheet 4 of 9