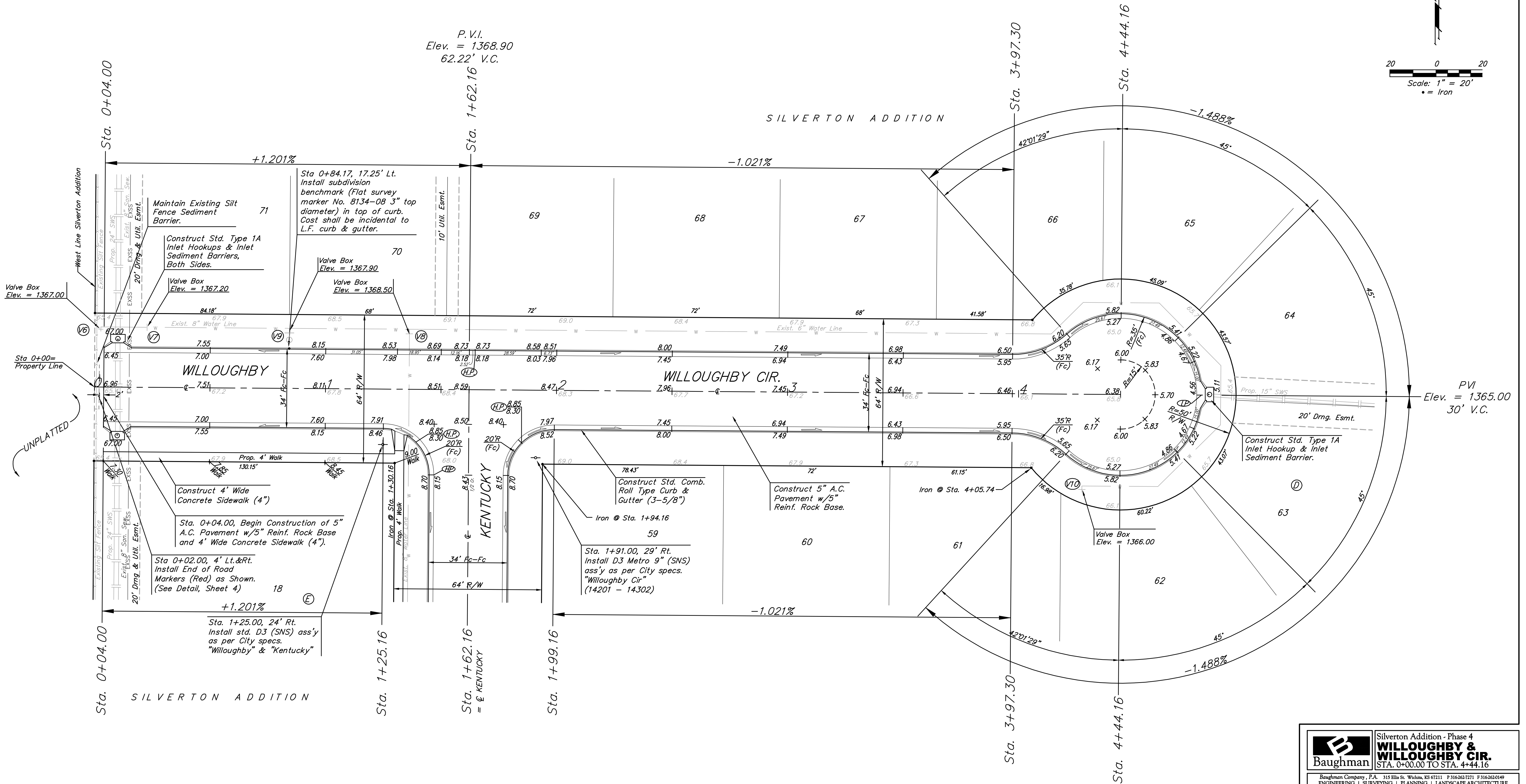
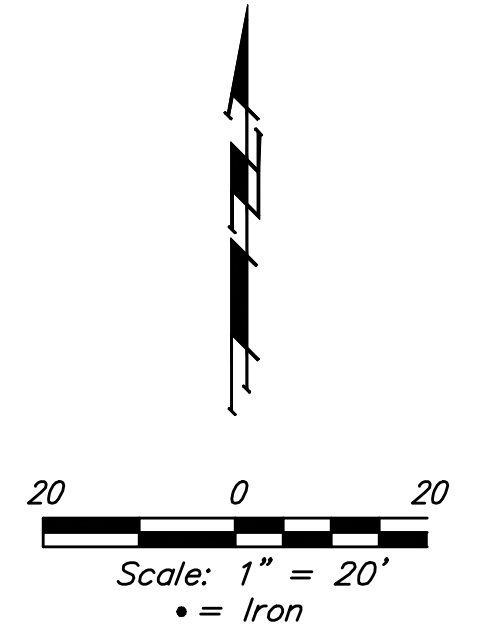


BENCHMARKS:
 135th St. W. & 13th St. N. - City of
 Wichita Disc at southwest corner of
 intersection, 30.00'± S. of & of 13th
 St. N. 35.00'± W. of & of 135th St. W.
 Elev. = 1355.65 MSL (NGVD 29)

"□" Cut in top of curb north side of
 Westport adjacent to the southeast
 corner of Lot 30, Block D, Silvertown
 Addition.
 Elev. = 1364.44 MSL (NGVD 29)

"□" Cut in curb inlet top at the west
 end of Bellick Ct. adjacent to Lot 10 &
 Lot 11, Block D, Silvertown Addition.
 Elev. = 1364.12 MSL (NGVD 29)



Roll type curb & gutter to
 be constructed on the pavement
 on this sheet.
 Top of curb elevation are given
 for full height curb.

		Silvertown Addition - Phase 4 WILLOUGHBY & WILLOUGHBY CIR. STA. 0+00.00 TO STA. 4+44.16	
		<small>Baughman Company, P.A. 315 Ellis St. Wichita, KS 67211 P 316343-7771 F 316263-0149 ENGINEERING SURVEYING PLANNING LANDSCAPE ARCHITECTURE</small>	
PROJECT NUMBER 472-84462	DESIGN JAK	DRAWN GRF/TMS	DATE 2/07/11
REVISIONS:	APPROVED NBW	SCALE Noted	SHEET 9 OF 42