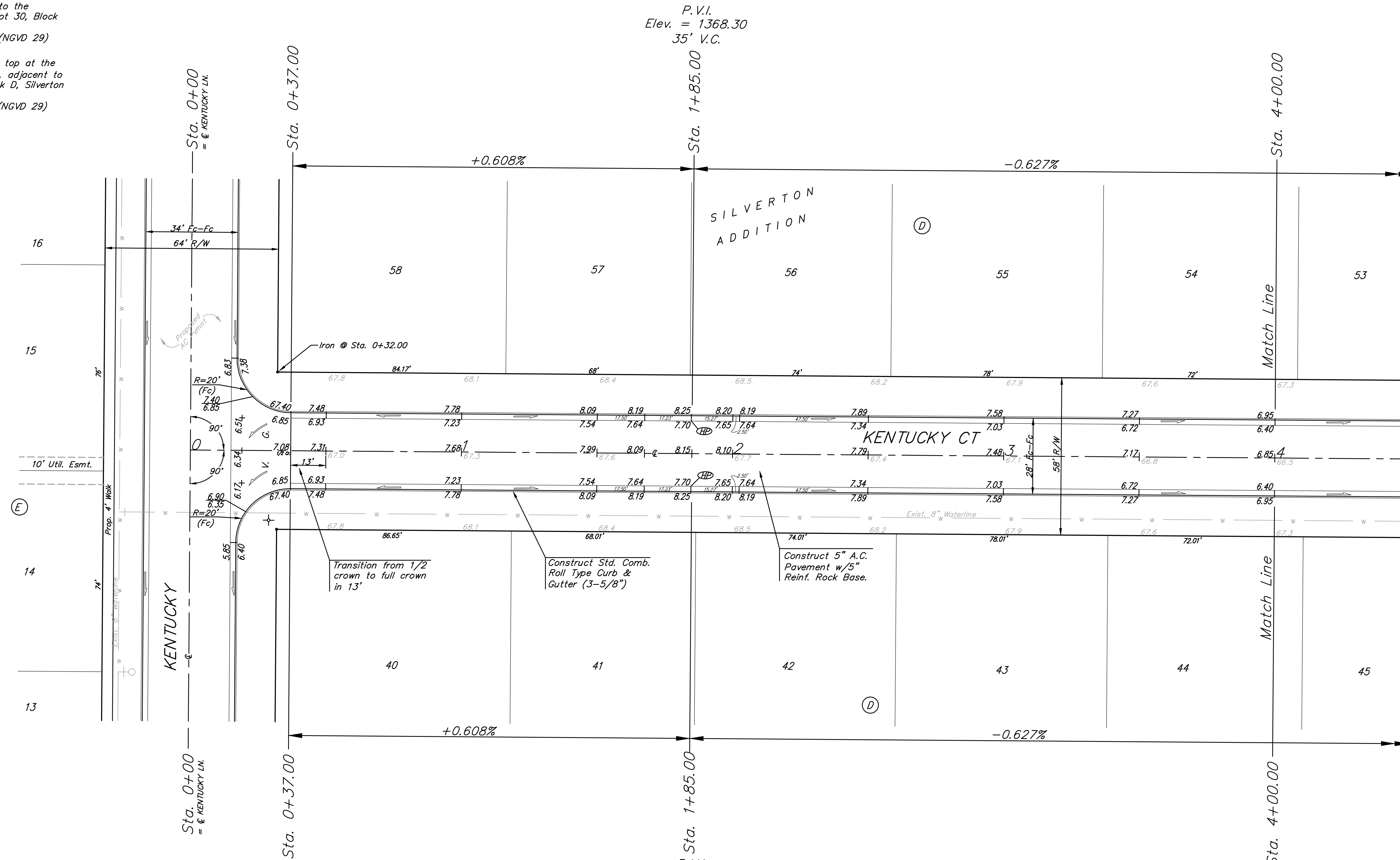
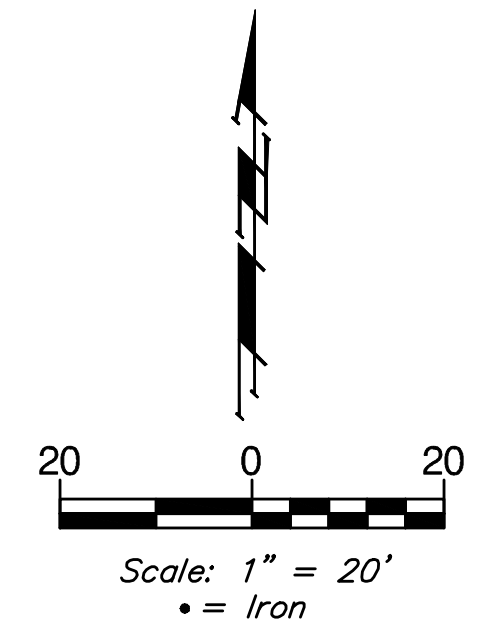


BENCHMARKS:
 135th St. W. & 13th St. N.
 City of Wichita Disc at southwest
 corner of intersection, 30.00± S.
 of C of 13th St. N. 35.00± W. of
 C of 135th St. W.
 Elev. = 1355.65 MSL (NGVD 29)

"□" Cut in top of curb north side
 of Westport adjacent to the
 southeast corner of Lot 30, Block
 D, Silverton Addition.
 Elev. = 1364.44 MSL (NGVD 29)

"□" Cut in curb inlet top at the
 west end of Bellick Ct. adjacent to
 Lot 10 & Lot 11, Block D, Silverton
 Addition.
 Elev. = 1364.12 MSL (NGVD 29)



Roll type curb & gutter to be constructed on the pavement on this sheet.
 Top of curb elevation are given for full height curb.

	Silverton Addition - Phase 4	
	KENTUCKY CT STA. 0+00 TO STA. 4+00.00	
<small>Baughman Company, P.A. 315 Ellis St. Wichita, KS 67211 P 316343-7771 F 316265-0149 ENGINEERING SURVEYING PLANNING LANDSCAPE ARCHITECTURE</small>		
PROJECT NUMBER 47284462	DESIGN JAK	DRAWN GRF/TMS
REVISIONS:	APPROVED NBW	DATE 2/07/11
SCALE Noted		SHEET 10 OF 42