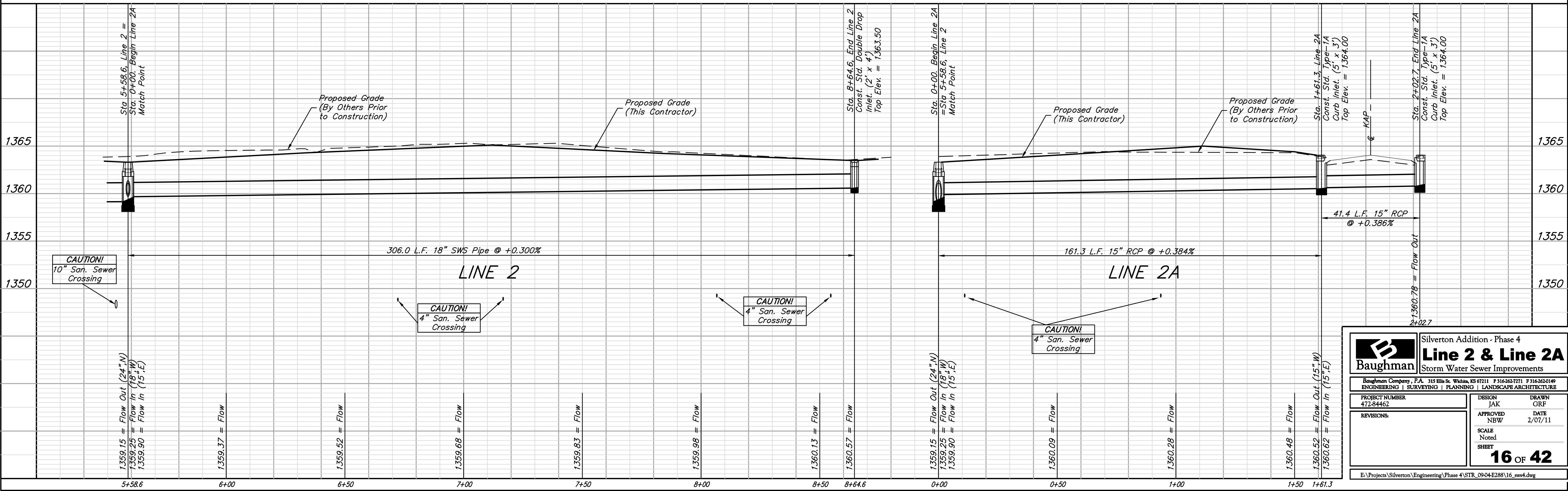
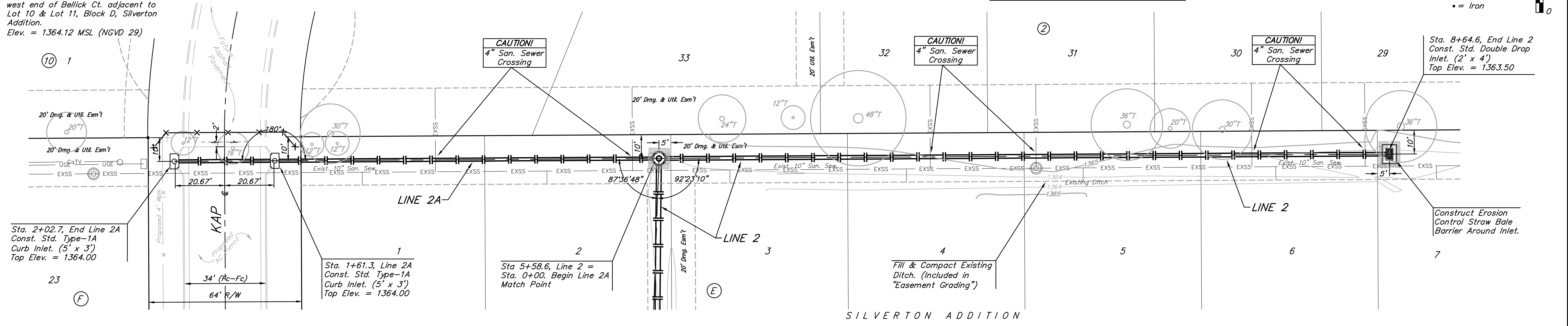
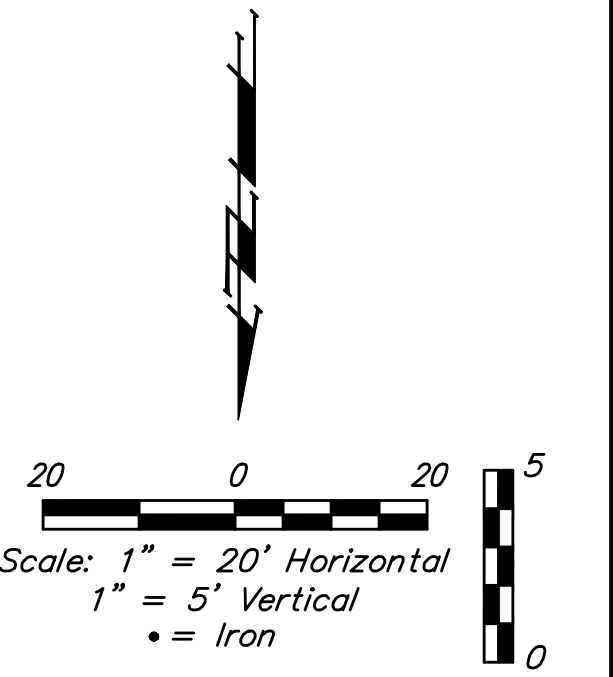


BENCHMARKS:
 135th St. W. & 13th St. N.
 City of Wichita Disc at southwest
 corner of intersection, 30.00'± S.
 of C of 13th St. N. 35.00'± W. of
 C of 135th St. W.
 Elev. = 1355.65 MSL (NGVD 29)

"□" Cut in top of curb north side
 of Westport adjacent to the
 southeast corner of Lot 30, Block
 D, Silverton Addition.
 Elev. = 1364.44 MSL (NGVD 29)

"□" Cut in curb inlet top at the
 west end of Bellick Ct. adjacent to
 Lot 10 & Lot 11, Block D, Silverton
 Addition.
 Elev. = 1364.12 MSL (NGVD 29)

Existing Trees Shall be removed **ONLY**
 with approval of the Engineer. Trees Not In
 Direct Conflict With Proposed New
 Construction Shall Remain And Be Protected
 From Damage. Cost to be Included in Bid
 Item "Site Clearing & Restoration"



		Silverton Addition - Phase 4	
		Line 2 & Line 2A	
Storm Water Sewer Improvements		Baughman Company, P.A. 315 Ellis St. Wichita, KS 67211 P 316-262-7271 F 316-262-0149 ENGINEERING SURVEYING PLANNING LANDSCAPE ARCHITECTURE	
PROJECT NUMBER 472-84462	DESIGN JAK	DRAWN GRF	
REVISIONS:	APPROVED NBW	DATE 2/07/11	
	SCALE Noted		
	SHEET		16 OF 42
E:\Projects\Silverton\Engineering\Phase 4\STR_09-04-E288\16_ssw4.dwg			