

STATE	PROJECT NO.	YEAR	SHEET NO.	TOTAL SHEETS
KANSAS	472 84614	:	II	534

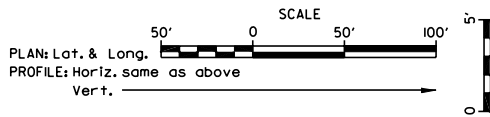
**PROJECT SURVEY CONTROL**

Project Coordinates x 0.9998848748 = NGS State Plane Coord.  
NAD 1983

VERTICAL DATUM: NAVD 1988

Datum Benchmark: USGS Benchmark Designation-R 39  
NAVD 1988 Elev. = 1361.74

Proj. Corridor Benchmark: USGS benchmark monument  
75' N. & 42' E. of Sec. Cor. at 159th & Kellogg  
NAVD 1988 Elev. = 1302.21



Previous Construction (Project 472 84615)

**UTILITIES**

**Cable**  
Cox Communications  
901 S. George Washington Blvd.  
Wichita, KS. 67211  
Attn: Marc Henderson  
Ph: 316-260-7745  
Ph: 316-260-6052

**Sanitary Sewer**  
Wichita Water & Sewer  
455 N. Main  
Wichita, KS. 67202  
Attn: LaDonna Lawrenz  
Ph. 316-268-4555

**Gas<sub>1</sub>**  
Kansas Gas Service  
1021 E. 26th St. N.  
Wichita, KS. 67219  
Attn: James Coe  
Ph: 316-832-3126  
Ph. 316-209-9181

**Storm Water Sewer**  
Wichita Water & Sewer  
455 N. Main  
Wichita, KS. 67202  
Attn: Scott Lindebak  
Ph: 316-268-4498

**Gas<sub>2</sub>**  
Southern Star Pipeline  
4000 S. Seneca  
Wichita, KS. 67217  
Attn: Terry Blanding  
Ph: 316-529-6622

**Telephone**  
AT&T  
154 N. Broadway, Room 210  
Wichita, KS. 67202  
Attn: Jason Edwards  
Ph: 316-268-2008

**Gas<sub>4</sub>**  
ConocoPhillips Pipeline Company  
500 Frank Phillips Blvd.  
Bartlesville, OK. 74004  
Attn: Jim Noland  
Ph: 918-661-0138  
Ph. 819-841-6181

**Telephone<sub>2</sub>**  
US Sprint  
7062 Universal Ave.  
Kansas City, MO. 64120  
Attn: McCoy Ingalls  
Ph: 800-521-0579  
Ph: 404-396-9276

**Gas<sub>5</sub>**  
Coffeyville Resources  
3309 E. 9th Ave.  
Winfield, KS. 67156  
Attn: Dennis Young  
Ph. 620-221-2107

**Traffic Signal**  
City of Wichita  
455 N. Main  
Wichita, KS. 67202  
Attn: Paul Gunzelman  
Ph: 316-268-4393

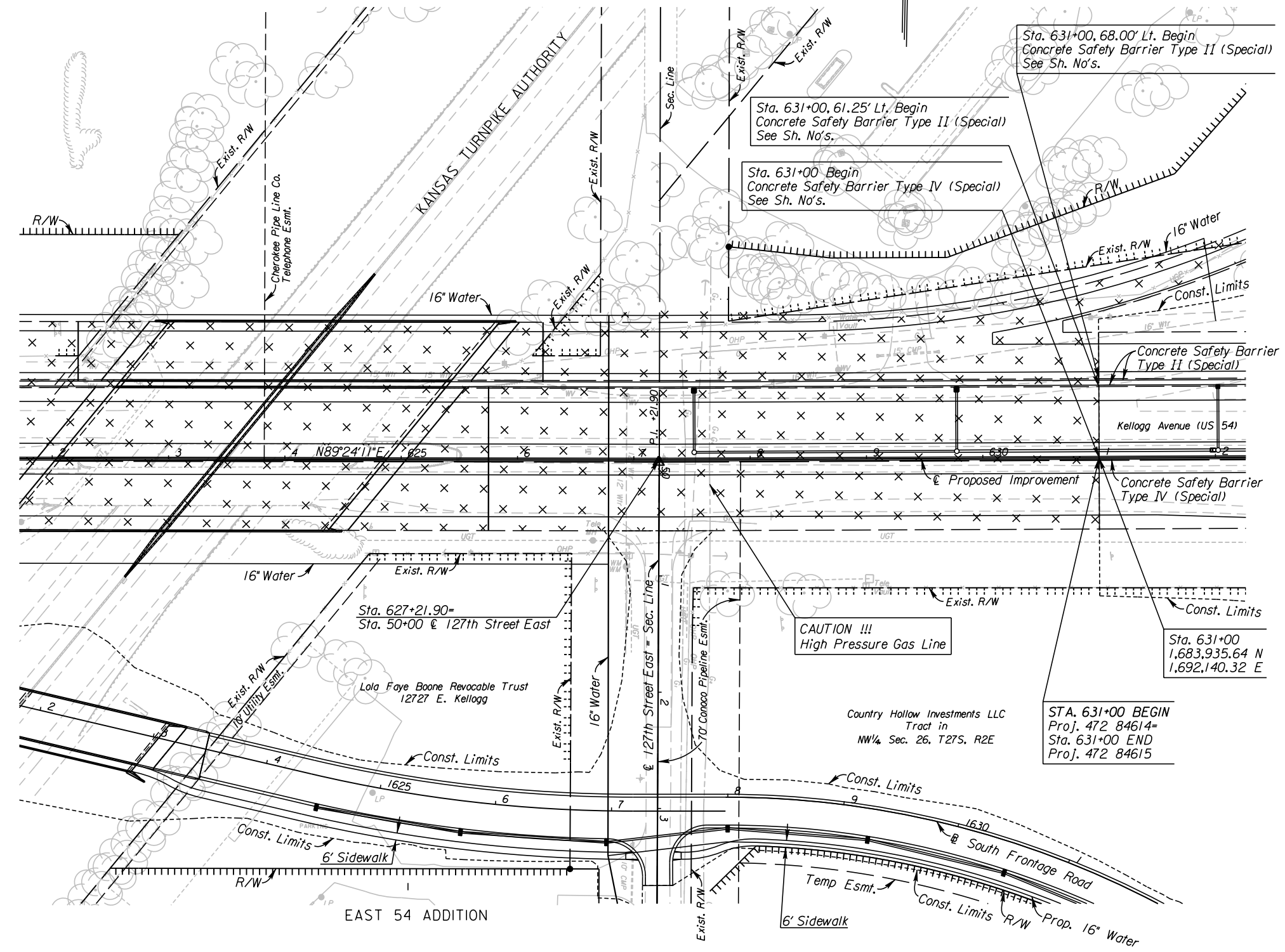
**Power**  
Westar  
1900 E. Central  
Wichita, KS. 67214  
Attn: Shane Price  
Ph: 316-261-6315

**Water**  
Wichita Water & Sewer  
455 N. Main  
Wichita, KS. 67202  
Attn: Greg Lolley  
Ph: 316-268-4555

**UTILITIES**  
Gas<sub>1</sub> Kansas Gas Service  
Gas<sub>4</sub> Conoco Phillips Pipeline Company  
Power Westar  
Storm Water Sewer Wichita Water & Sewer  
Telephone AT&T  
Telephone<sub>2</sub> US Sprint  
Water Wichita Water & Sewer

See Sh. No's. 102-130 for SWS Plans.  
See Sh. No's. 140-162 for Water Plans.

**CITY OF WICHITA**  
EAST KELLOGG  
PLAN  
STA. 631+00 TO STA. 632+00



11/22/2011 2:18/2011  
 T:\35766A\Cadd\Sheets\Roadway\EK2ML\PL\N01.dgn  
 SURV. - PLOT CADD DES. - DR. - TR. - CKD. - APP.