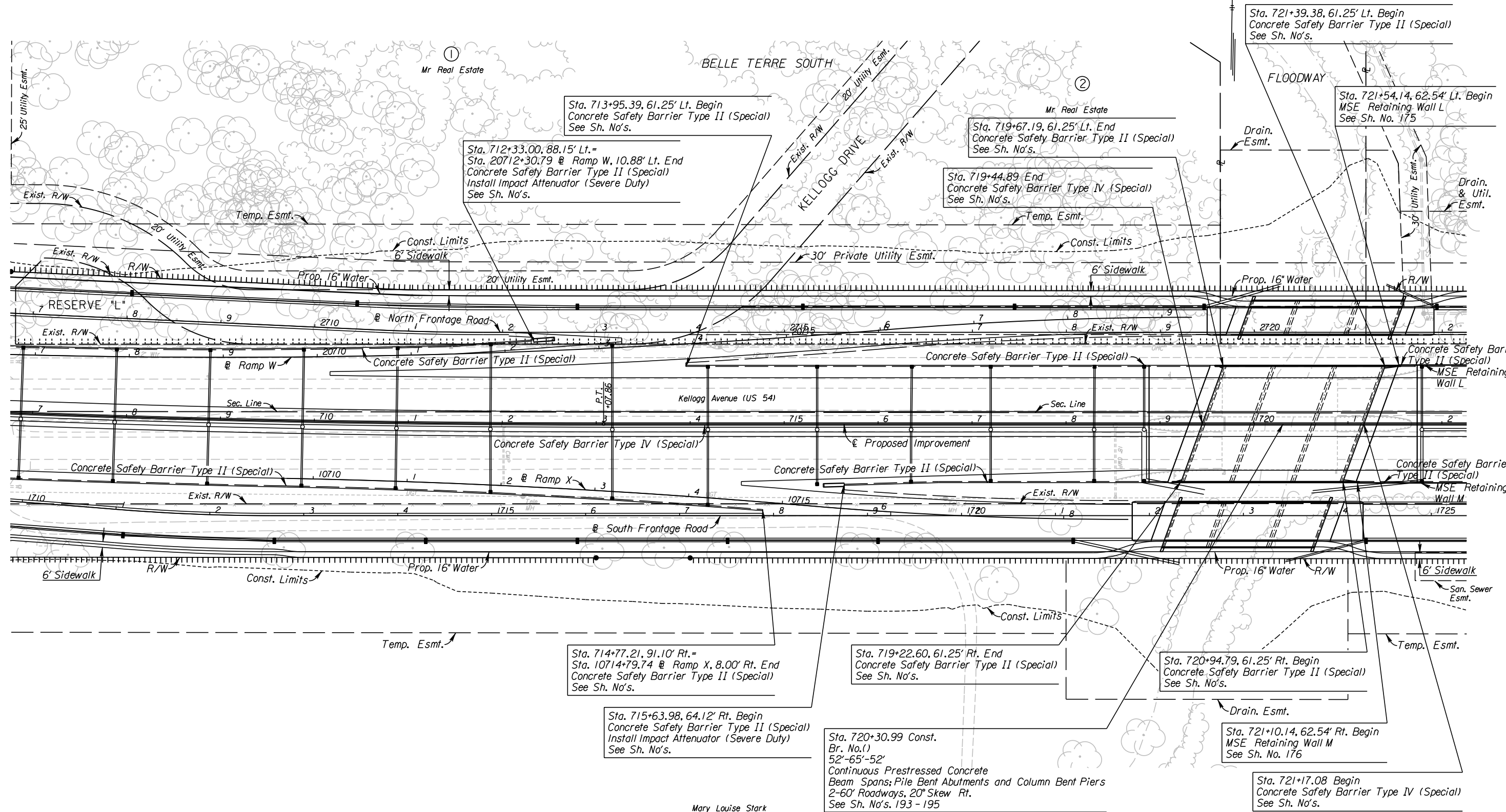


STATE	PROJECT NO.	YEAR	SHEET NO.	TOTAL SHEETS
KANSAS	472 84614	:	23	534



Sta. 713+95.39, 61.25' Lt. Begin
Concrete Safety Barrier Type II (Special)
See Sh. No's.

Sta. 712+33.00, 88.15' Lt. =
Sta. 20712+30.79 @ Ramp W, 10.88' Lt. End
Concrete Safety Barrier Type II (Special)
Install Impact Attenuator (Severe Duty)
See Sh. No's.

Sta. 719+67.19, 61.25' Lt. End
Concrete Safety Barrier Type II (Special)
See Sh. No's.

Sta. 719+44.89 End
Concrete Safety Barrier Type IV (Special)
See Sh. No's.

Sta. 721+39.38, 61.25' Lt. Begin
Concrete Safety Barrier Type II (Special)
See Sh. No's.

Sta. 721+54.14, 62.54' Lt. Begin
MSE Retaining Wall L
See Sh. No. 175

Sta. 714+77.21, 91.10' Rt. =
Sta. 10714+79.74 @ Ramp X, 8.00' Rt. End
Concrete Safety Barrier Type II (Special)
See Sh. No's.

Sta. 715+63.98, 64.12' Rt. Begin
Concrete Safety Barrier Type II (Special)
Install Impact Attenuator (Severe Duty)
See Sh. No's.

Sta. 719+22.60, 61.25' Rt. End
Concrete Safety Barrier Type II (Special)
See Sh. No's.

Sta. 720+30.99 Const.
Br. No. (1)
52'-65'-52'
Continuous Prestressed Concrete
Beam Spans; Pile Bent Abutments and Column Bent Piers
2-60' Roadways, 20° Skew Rt.
See Sh. No's. 193 - 195

Sta. 720+94.79, 61.25' Rt. Begin
Concrete Safety Barrier Type II (Special)
See Sh. No's.

Sta. 721+10.14, 62.54' Rt. Begin
MSE Retaining Wall M
See Sh. No. 176

Sta. 721+17.08 Begin
Concrete Safety Barrier Type IV (Special)
See Sh. No's.

Mary Louise Stark

UTILITIES

Cable	Cox Communications
Power	Westar
Sanitary Sewer	Wichita Water & Sewer
Storm Water Sewer	Wichita Water & Sewer
Telephone	AT&T
Water	Wichita Water & Sewer

See Sh. No's. 102-130 for SWS Plans.
See Sh. No's. 140-162 for Water Plans.

CITY OF WICHITA
EAST KELLOGG
PLAN
STA. 707+00 TO STA. 722+00

10:40:33 AM
 2/9/2011
 T:\35766A\Cadd\Sheets\Roadway\EK2ML\PLN07.dgn
 SURV. - PLOT CADD DES. - DR. - TR. - CKD. - APP.