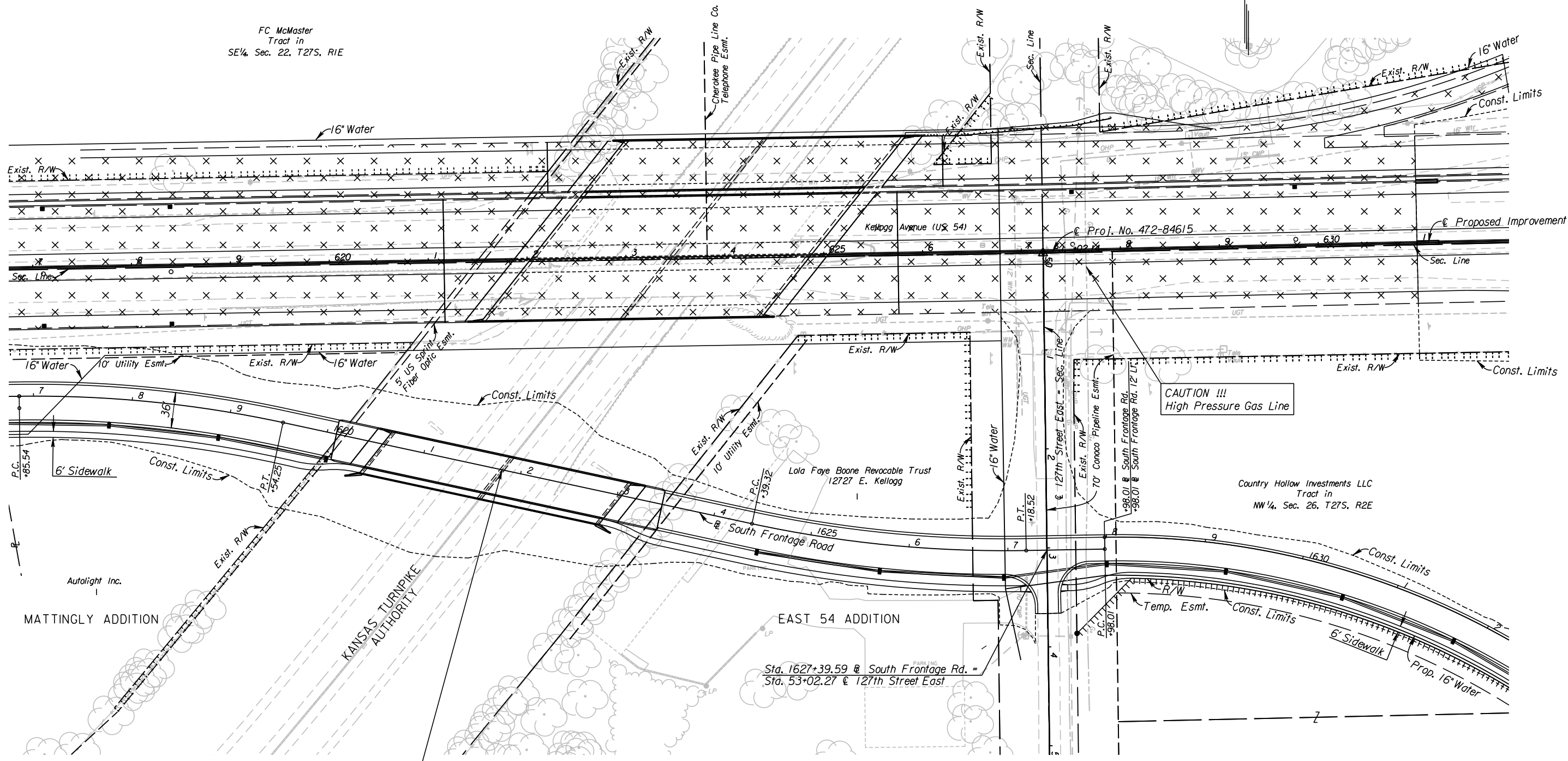


STATE	PROJECT NO.	YEAR	SHEET NO.	TOTAL SHEETS
KANSAS	472 84614	.	33	534

FC McMaster
Tract in
SE 1/4, Sec. 22, T27S, R1E



Sta. 1621+80.88 Const.
Br. No 1)
122'-122' Continuous Prestressed Concrete
Beam Spans, Pile Abutments & Column Bent Piers
1-40' Roadway, 1-6' Sidewalk, 26°17'31" Skew Rt.
See Sh. No's. 180 -182

UTILITIES

- | | |
|------------------------|----------------------------------|
| Cable | Cox Communications |
| Gas ₁ | Kansas Gas Service |
| Gas ₄ | Conoco Phillips Pipeline Company |
| Power | Westar |
| Storm Water Sewer | Wichita Water & Sewer |
| Telephone | AT&T |
| Telephone ₂ | US Sprint |
| Water | Wichita Water & Sewer |

See Sh. No's. 102-130 for SWS Plans.
See Sh. No's. 140-162 for Water Plans.

CITY OF WICHITA

SOUTH FRONTAGE ROAD

PLAN

STA. 1617+00 TO STA. 1632+00

3:58:33 PM
 2/23/2011
 G:\W06\0035\Road\35766A-Project 11\Design Management\CADD\Bose\Bor\der-s\EK2FSP\N03.dgn
 SURV. PLOT CADD DES. DR. TR. CKD. APP.