

STATE	PROJECT NO.	YEAR	SHEET NO.	TOTAL SHEETS
KANSAS	472 84614	-	104	534

Sta. 0+54.62 Line B24=  
Sta. 674+53.44 60.80' Rt.  
Const. Conc. Grate Inlet

Sta. 0+54.62 Line B28=  
Sta. 676+53.45 60.80' Rt.  
Const. Conc. Grate Inlet

Sta. 26+27.54 Line B=  
Sta. 0+00 Lines B28 & B29=  
Sta. 676+53.45 6.18' Rt.  
Const. Type P (Std.) Manhole  
Install 18" x 86.98' RCP (N)  
Install 18" x 135.83' RCP (E)  
Install 18" x 54.62' RCP (S)

Sta. 0+86.98, Line B29=  
Sta. 676+53.45, 80.80' Lt.  
Const. Conc. Grate Inlet

Sta. 24+27.53 Line B=  
Sta. 0+00 Lines B24 & B25=  
Sta. 674+53.44 6.18' Rt.  
Const. Type P (Std.) Manhole  
Install 18" x 86.98' RCP (N)  
Install 24" x 100.00' RCP (E)  
Install 18" x 54.62' RCP (S)

Sta. 0+86.98 Line B25=  
Sta. 674+53.44 80.80' Lt.  
Const. Conc. Grate Inlet

Sta. 0+86.98 Line B22=  
Sta. 673+53.44 80.80' Lt.  
Const. Conc. Grate Inlet

Sta. 0+86.98 Line B26=  
Sta. 675+53.45 80.80' Lt.  
Const. Conc. Grate Inlet

Sta. 25+27.53 Line B=  
Sta. 0+00 Lines B26 & B27=  
Sta. 675+53.45 6.18' Rt.  
Const. Type P (Std.) Manhole  
Install 18" x 86.98' RCP (N)  
Install 24" x 100.00' RCP (E)  
Install 18" x 54.62' RCP (S)

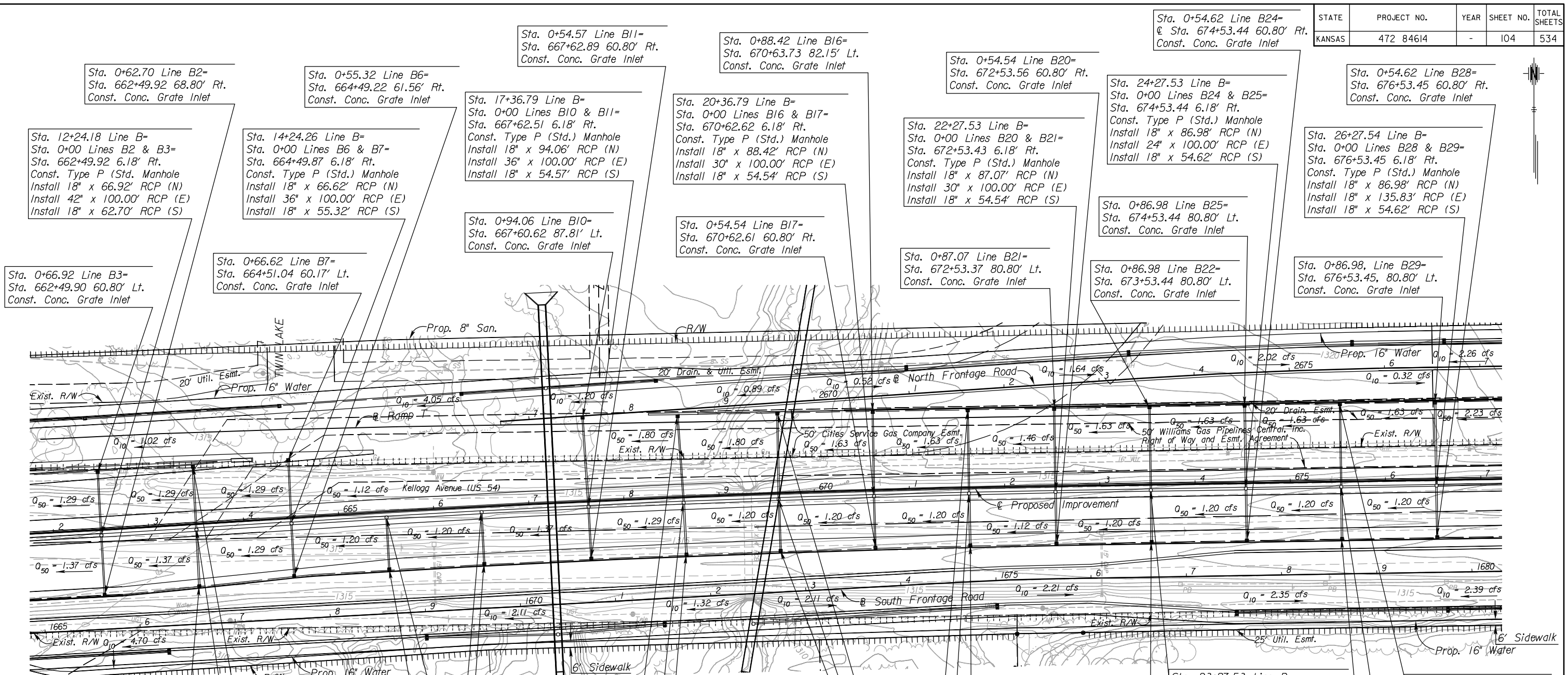
Sta. 0+54.62 Line B27=  
Sta. 675+53.44 60.80' Rt.  
Const. Conc. Grate Inlet

$Q_{50} = .xx$  cfs - DESIGN YEAR FLOW PER INLET  
See Sh. No's. 17-18 for Crossroad Structures  
See Sh. No's. 136-139 for San. Sewer Plans.  
See Sh. No's. 140-162 for Water Plans.

**CITY OF WICHITA**

**EAST KELLOGG  
STORM WATER SEWER PLAN  
STA. 662+00 TO STA. 677+00**

- UTILITIES**
- Gas2 Southern Star Pipeline
  - Gas5 Coffeyville Resources
  - Power Westar
  - Sanitary Sewer Wichita Water & Sewer
  - Storm Water Sewer Wichita Water & Sewer
  - Telephone AT&T
  - Traffic Signal City of Wichita
  - Water Wichita Water & Sewer



Sta. 0+59.46 Line B5=  
Sta. 663+49.30 65.56' Rt.  
Const. Conc. Grate Inlet

Sta. 0+54.57 Line B8=  
Sta. 665+49.66 60.83' Rt.  
Const. Conc. Grate Inlet

Sta. 0+54.55 Line B9=  
Sta. 666+49.94 60.80' Rt.  
Const. Conc. Grate Inlet

Sta. 0+54.55 Line B15=  
Sta. 669+62.59 60.80' Rt.  
Const. Conc. Grate Inlet

Sta. 0+54.54 Line B19=  
Sta. 671+62.53 60.80' Rt.  
Const. Conc. Grate Inlet

Sta. 23+27.53 Line B=  
Sta. 0+00 Lines B22 & B23=  
Sta. 673+53.44 6.18' Rt.  
Const. Type P (Std.) Manhole  
Install 18" x 86.98' RCP (N)  
Install 30" x 100.00' RCP (E)  
Install 18" x 54.62' RCP (S)

Sta. 0+54.62 Line B23=  
Sta. 673+53.44 60.80' Rt.  
Const. Conc. Grate Inlet

Sta. 13+24.26 Line B=  
Sta. 0+00 Lines B4 & B5=  
Sta. 663+49.88 6.18' Rt.  
Const. Type P (Std.) Manhole  
Install 18" x 66.23' RCP (N)  
Install 42" x 100.00' RCP (E)  
Install 18" x 59.46' RCP (S)

Sta. 15+24.26 Line B=  
Sta. 0+00 Line B8=  
Sta. 665+49.91 6.18' Rt.  
Const. Type P (Std.) Manhole  
Install 36" x 100.00' RCP (E)  
Install 18" x 54.57' RCP (S)

Sta. 0+90.98 Line B12=  
Sta. 668+60.07 85.86' Lt.  
Const. Conc. Grate Inlet

Sta. 19+36.79 Line B=  
Sta. 0+00 Lines B14 & B15=  
Sta. 669+62.58 6.18' Rt.  
Const. Type P (Std.) Manhole  
Install 18" x 89.97' RCP (N)  
Install 36" x 100.00' RCP (E)  
Install 18" x 54.55' RCP (S)

Sta. 21+36.79 Line B=  
Sta. 0+00 Lines B18 & B19=  
Sta. 671+62.66 6.18' Rt.  
Const. Type P (Std.) Manhole  
Install 18" x 87.44' RCP (N)  
Install 30" x 90.74' RCP (E)  
Install 18" x 54.54' RCP (S)

Sta. 0+66.23 Line B4=  
Sta. 663+50.51 60.13' Lt.  
Const. Conc. Grate Inlet

Sta. 16+24.26 Line B=  
Sta. 0+00 Line B9=  
Sta. 666+49.94 6.18' Rt.  
Const. Type P (Std.) Manhole  
Install 36" x 112.53' RCP (E)  
Install 18" x 54.55' RCP (S)

Sta. 18+36.79 Line B=  
Sta. 0+00 Lines B12 & B13=  
Sta. 668+62.55 6.18' Rt.  
Const. Type P (Std.) Manhole  
Install 18" x 90.98' RCP (N)  
Install 36" x 100.00' RCP (E)  
Install 18" x 54.56' RCP (S)

Sta. 0+89.97 Line B14=  
Sta. 669+64.24 83.70' Lt.  
Const. Conc. Grate Inlet

Sta. 0+87.44 Line B18=  
Sta. 671+63.25 81.26' Lt.  
Const. Conc. Grate Inlet

Sta. 0+54.56 Line B13=  
Sta. 668+63.32 60.80' Rt.  
Const. Conc. Grate Inlet

8:16 AM 2/22/2011 J:\CIVIL\07432\DWG\SWS\EK2ML PLAN\EK2ML SWP\04.DWG  
 SURV. - PLOT CADD DES. - DR. - APP. - CKD. - TR.