

STATE	PROJECT NO.	YEAR	SHEET NO.	TOTAL SHEETS
KANSAS	472 84614	.	120	534

Sta. 0+88.86 Line FN2=
Sta. 666+35.55 118.98' Lt.
Const. Conc. Grate Inlet

Sta. 14+18.92 Line FN1=
Sta. 664+45.38 117.55 Lt.
Const. Conc. Grate Inlet

Sta. 12+14.33 Line FN1=
Sta. 662+39.79 117.59' Lt.
Const. Conc. Grate Inlet
Install 18" x 204.59' RCP (E)

Sta. 1+15.84 Line FN3=
Sta. 2668+35.59 31.55' Lt.
@ North Frontage Road
Const. Conc. Gutter Inlet

Sta. 0+00 Line FN2=
Sta. 0+00 Line FN3=
Sta. 2667+19.75 31.51' Lt.
@ North Frontage Road
Const. Type P (Std.) Manhole Stack
Install 18" x 86.86' RCP (W)
Install 18" x 115.84' RCP (E)

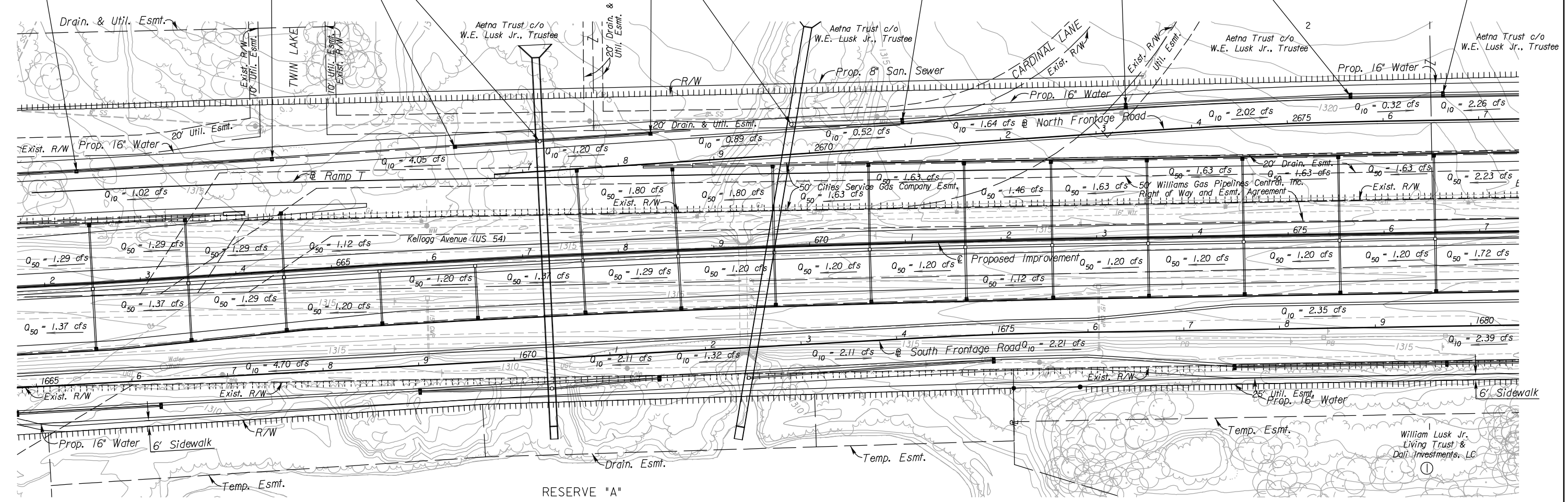
Sta. 1+15.88 Line FN4=
Sta. 2670+98.89 27.00' Lt.
@ North Frontage Road
Const. Curb Inlet, Type 12
Install 54" x 234.00' RCP (E)

Sta. 0+00 Line FN4=
Sta. 2669+83.10 31.44' Lt.
@ North Frontage Road
Const. Type P (Std.) Manhole Stack
Install 54" x 115.88' RCP (E)

Sta. 3+49.88 Line FN4=
Sta. 2673+32.89 27.00' Lt.
@ North Frontage Road
Const. Curb Inlet, Type 12
Install 48" x 234.86' RCP (E)

Sta. 5+84.74 Line FN4=
Sta. 2675+66.55 27.00' Lt.
@ North Frontage Road
Const. Curb Inlet, Type 12
Install 48" x 96.60' RCP (E)

Sta. 6+81.33 Line FN4=
Sta. 2676+63 27.00' Lt.
@ North Frontage Road
Const. Curb Inlet, Type 12
Install 48" x 206.02' RCP (E)



3:03 PM
 2/18/2011
 J:\CIVIL\07432\DWG\SWS\EK2ML PLAN\EK2FNSWPL04.DWG
 SURV. - PLOT CADD DES. - DR. - TR. - CKD. - APP.

- UTILITIES**
- Gas₂ Southern Star Pipeline
 - Gas₅ Coffeyville Resources
 - Power Westar
 - Sanitary Sewer Wichita Water & Sewer
 - Storm Water Sewer Wichita Water & Sewer
 - Telephone AT&T
 - Traffic Signal City of Wichita
 - Water Wichita Water & Sewer

$Q_{50} = x.xx$ cfs - DESIGN YEAR FLOW PER INLET
 See Sh. No's. 136-139 for San. Sewer Plans.
 See Sh. No's. 140-162 for Water Plans.

CITY OF WICHITA
NORTH FRONTAGE ROAD
STORM WATER SEWER PLAN
 STA. 662+00 TO STA. 677+00