

STATE	PROJECT NO.	YEAR	SHEET NO.	TOTAL SHEETS
KANSAS	472 84614	.	136	534

Notes:
 Existing lines not remaining in service shall be abandoned in place or removed.
 All open ends of abandoned pipe shall be plugged. See Sh. No.

Existing manholes over abandoned sanitary sewer shall be removed. See Sh. No.

MH
1-1
N
E

Sta. 13+33.97 Line 1=
 Sta. 661+58.05 186.78' Lt.
 Remove Exist. Manhole
 Const. Manhole (San.) 4' Dia. Type P (Std.)
 Over Exist. 8" San. Sewer.
 Install 8" x 404.38' San. Sewer (E).
 See Sheet Nos.

MH
1-2
N
E

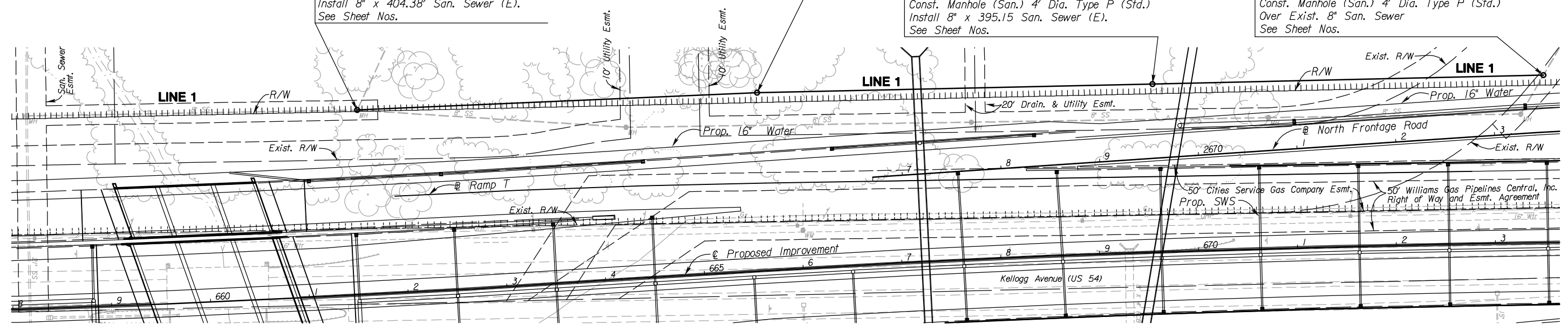
Sta. 17+38.35 Line 1=
 Sta. 665+63.61 179.84' Lt.
 Const. Manhole (San.) 4' Dia. Type P (Std.)
 Install 8" x 400.00' San. Sewer (E).
 See Sheet Nos.

MH
1-3
N
E

Sta. 21+38.35 Line 1=
 Sta. 669+59.43 169.99' Lt.
 Const. Manhole (San.) 4' Dia. Type P (Std.)
 Install 8" x 395.15 San. Sewer (E).
 See Sheet Nos.

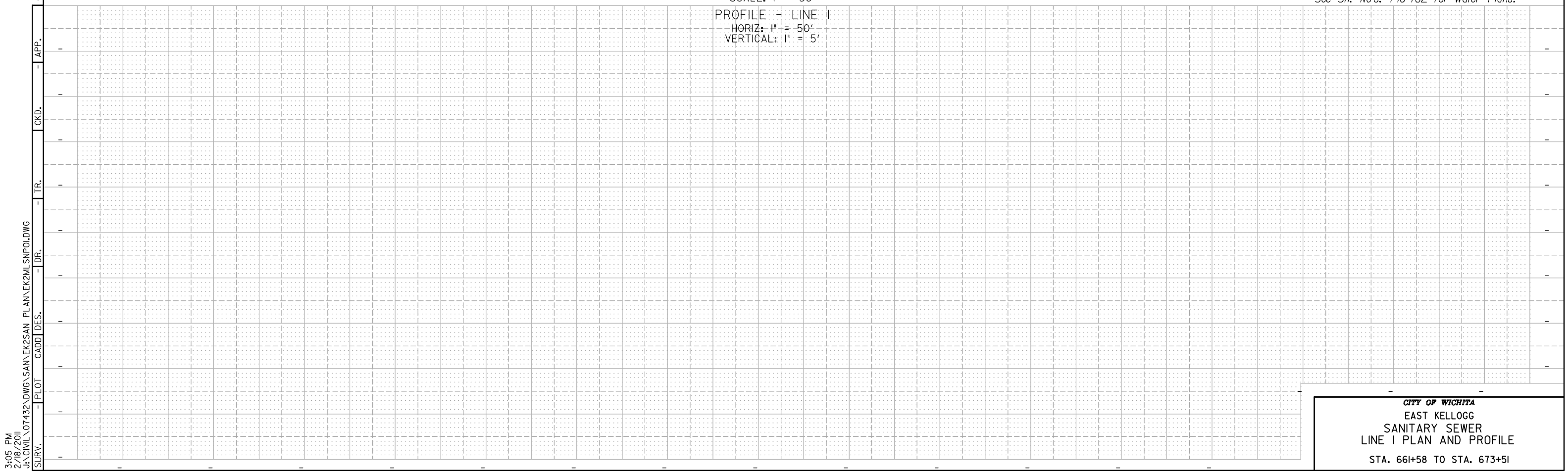
MH
1-4
N
E

Sta. 25+33.50 Line 1=
 Sta. 673+51.41 169.22' Lt.
 Const. Manhole (San.) 4' Dia. Type P (Std.)
 Over Exist. 8" San. Sewer
 See Sheet Nos.



PLAN - LINE 1
 SCALE: 1" = 50'
 PROFILE - LINE 1
 HORIZ: 1" = 50'
 VERTICAL: 1" = 5'

See Sh. No's. 102-130 for SWS Plans.
 See Sh. No's. 140-162 for Water Plans.



CITY OF WICHITA
 EAST KELLOGG
 SANITARY SEWER
 LINE 1 PLAN AND PROFILE
 STA. 661+58 TO STA. 673+51

3:05 PM
 2/18/2011
 J:\CIVIL\07432\DWG\SAN\K2\SAN_PLAN\K2MILSNPOL.DWG
 SURV. - PLOT CADD DES. - DR. - TR. - CKD. - APP.