

STATE	PROJECT NO.	YEAR	SHEET NO.	TOTAL SHEETS
KANSAS	472 84614	.	139	534

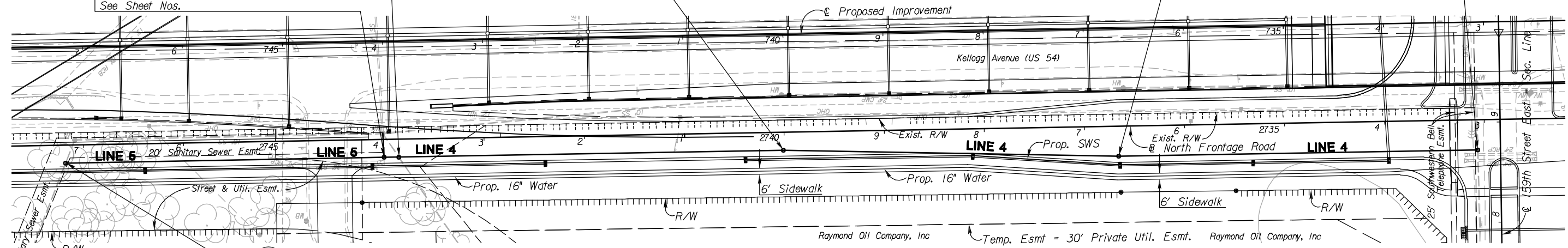
MH 4-1 N  
E  
Sta. 10+00 Line 4=  
Sta. 10+00 Line 5=  
Sta. 2744+00.15 18.00' Lt.  
@ North Frontage Road  
Const. Manhole (San.) 5' Dia. Type P (Std.)  
Install 18" x 23.81 San. Sewer (S)  
Remove Exist. San Sewer MH (S) & Connect  
to Exist. 18" San. Sewer  
Install 10" x 14.82' San. Sewer (W)  
Install 10" x 318.11' San. Sewer (E)  
See Sheet Nos.

MH 4-2 N  
E  
Sta. 10+14.82 Line 4=  
Sta. 2743+85.33 18.00' Lt.  
@ North Frontage Road  
Const. Manhole (San.) 5' Dia. Type P (Std.)  
Over Exist. San. Sewer  
Abandon Exist. 10" San. Sewer (SE)  
Install 10" x 384.11' San. Sewer. (W)  
See Sheet Nos.

MH 4-3 N  
E  
Sta. 13+98.93 Line 4=  
Sta. 2740+01.22 18.00' Lt.  
@ North Frontage Road  
Const. Manhole (San.) 5' Dia. Type P (Std.)  
Install 10" x 335.17' San. Sewer (W).  
See Sheet Nos.

MH 4-4 N  
E  
Sta. 17+34.10 Line 4=  
Sta. 2736+66.26 30.00' Lt.  
@ North Frontage Road  
Const. Manhole (San.) 5' Dia. Type P (Std.)  
Install 10" x 358.80' San. Sewer (W).  
See Sheet Nos.

MH 4-5 N  
E  
Sta. 20+92.91 Line 4=  
Sta. 2733+07.46 30.00' Lt.  
@ North Frontage Road  
Const. Manhole (San.) 5' Dia. Type P (Std.)  
Over Exist 10" San. Sewer.  
Abandon Exist. 10" San. Sewer (S)  
See Sheet Nos.



MH 5-1 N  
E  
Sta. 13+18.11 Line 5=  
Sta. 2747+18.26 18.00' Lt.  
@ North Frontage Road  
Const. Manhole (San.) 5' Dia. Type P (Std.)  
Over Exist. 10" San. Sewer  
See Sheet Nos.

PLAN - LINE 5  
SCALE: 1" = 50'

PROFILE - LINE 5  
HORIZ: 1" = 50'  
VERTICAL: 1" = 5'

SANITARY SEWER		
DESCRIPTION	UNIT	QUANTITY
Pipe, SS 8"	LF	2498
Pipe, SS 10"	LF	1495
Pipe, SS 18"	LF	24
Pipe, SS 21"	LF	399
MH, Standard SS (4')	Each	10
MH, Standard SS (5')	Each	11

PLAN - LINE 4  
SCALE: 1" = 50'

PROFILE - LINE 4  
HORIZ: 1" = 50'  
VERTICAL: 1" = 5'

Notes:  
Existing lines not remaining in service shall be abandoned in place or removed. All open ends of abandoned pipe shall be plugged. See Sh. No.  
Existing manholes over abandoned sanitary sewer shall be removed. See Sh. No.  
All stations and offsets are to back of curb unless otherwise shown.  
See Sh. No's. 102-130 for SWS Plans.  
See Sh. No's. 140-162 for Water Plans.

CITY OF WICHITA  
NORTH FRONTAGE ROAD  
SANITARY SEWER  
LINE 4 & 5 PLAN AND PROFILE  
STA. 2733+07 TO STA. 2750+00

3:05 PM  
2/18/2011  
J:\CIVIL\07432\DWG\SAN\K2SAN PLAN\K2MILSNP04.DWG  
SURV. - PLOT CADD DES. - DR. - TR. - CKD. - APP.