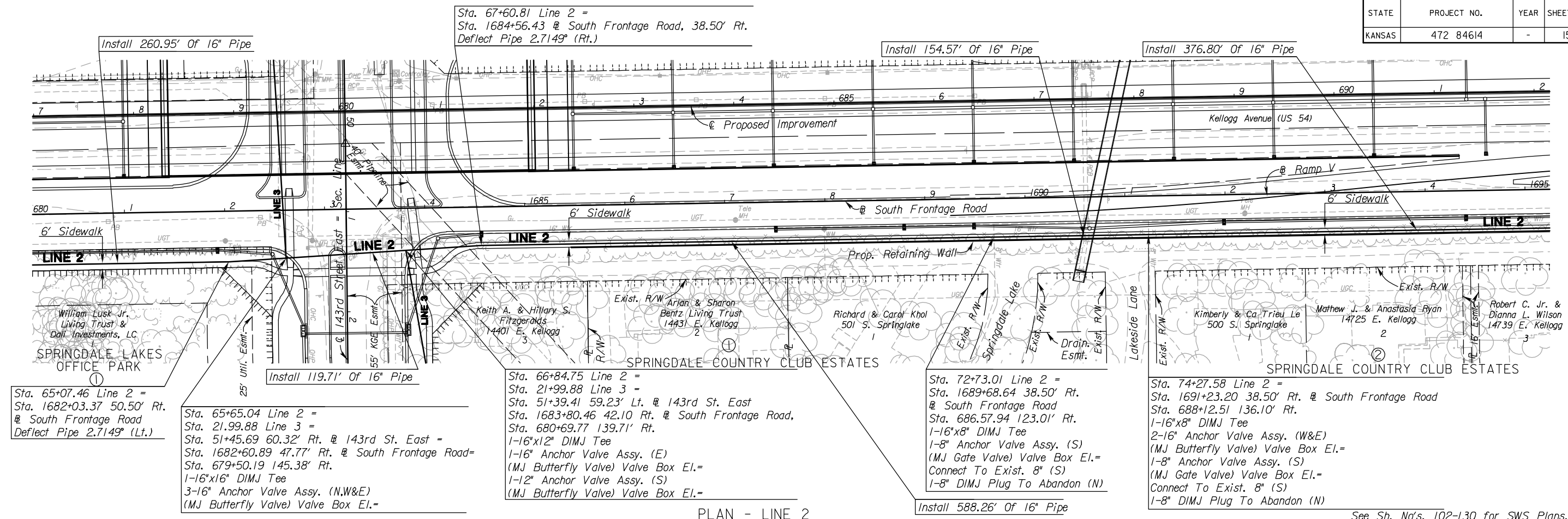


STATE	PROJECT NO.	YEAR	SHEET NO.	TOTAL SHEETS
KANSAS	472 84614	-	153	534



Sta. 65+07.46 Line 2 =
Sta. 1682+03.37 50.50' Rt.
Deflect Pipe 2.7149° (Lt.)

Sta. 65+65.04 Line 2 =
Sta. 21+99.88 Line 3 =
Sta. 51+45.69 60.32' Rt. @ 143rd St. East =
Sta. 1682+60.89 47.77' Rt. @ South Frontage Road =
Sta. 679+50.19 145.38' Rt.
1-16"x16" DIMJ Tee
3-16" Anchor Valve Assy. (N,W&E)
(MJ Butterfly Valve) Valve Box El. =

Sta. 67+60.81 Line 2 =
Sta. 1684+56.43 @ South Frontage Road, 38.50' Rt.
Deflect Pipe 2.7149° (Rt.)

Sta. 66+84.75 Line 2 =
Sta. 21+99.88 Line 3 =
Sta. 51+39.41 59.23' Lt. @ 143rd St. East
Sta. 1683+80.46 42.10 Rt. @ South Frontage Road,
Sta. 680+69.77 139.71' Rt.
1-16"x12" DIMJ Tee
1-16" Anchor Valve Assy. (E)
(MJ Butterfly Valve) Valve Box El. =
1-12" Anchor Valve Assy. (S)
(MJ Butterfly Valve) Valve Box El. =

Sta. 72+73.01 Line 2 =
Sta. 1689+68.64 38.50' Rt.
@ South Frontage Road
Sta. 686.57.94 123.01' Rt.
1-16"x8" DIMJ Tee
1-8" Anchor Valve Assy. (S)
(MJ Gate Valve) Valve Box El. =
Connect To Exist. 8" (S)
1-8" DIMJ Plug To Abandon (N)

Sta. 74+27.58 Line 2 =
Sta. 1691+23.20 38.50' Rt. @ South Frontage Road
Sta. 688+12.51 136.10' Rt.
1-16"x8" DIMJ Tee
2-16" Anchor Valve Assy. (W&E)
(MJ Butterfly Valve) Valve Box El. =
1-8" Anchor Valve Assy. (S)
(MJ Gate Valve) Valve Box El. =
Connect To Exist. 8" (S)
1-8" DIMJ Plug To Abandon (N)

PLAN - LINE 2
SCALE: 1" = 50'
PROFILE - LINE 2
HORIZ: 1" = 50'
VERTICAL: 1" = 5'

See Sh. No's. 102-130 for SWS Plans.
See Sh. No's. 136-139 for San. Sewer Plans.

9:59 AM
 2/22/2011
 J:\CIVIL\07432\DWG\WTR\VEK2WTR_PLAN\VEK2M1_WL_P15.DWG
 SURV. - PLOT CADD DES. - DR. - TR. - CKD. - APP.

CITY OF WICHITA
 SOUTH FRONTAGE ROAD
 WATER LINE 2 PLAN AND PROFILE
 STA. 1680+00 TO STA. 1695+00 RT.