

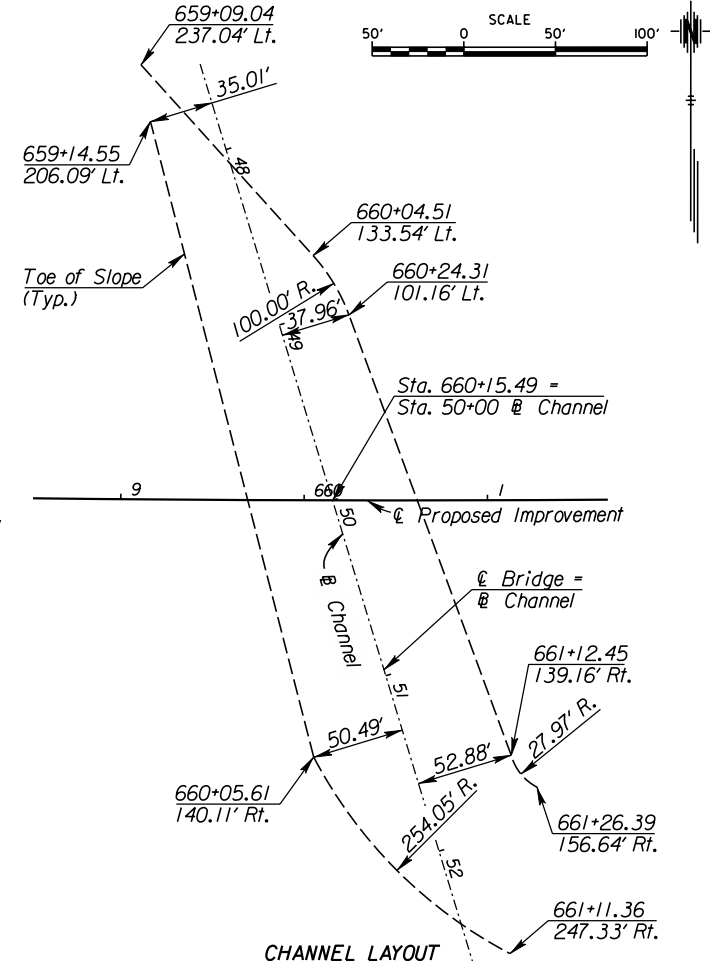
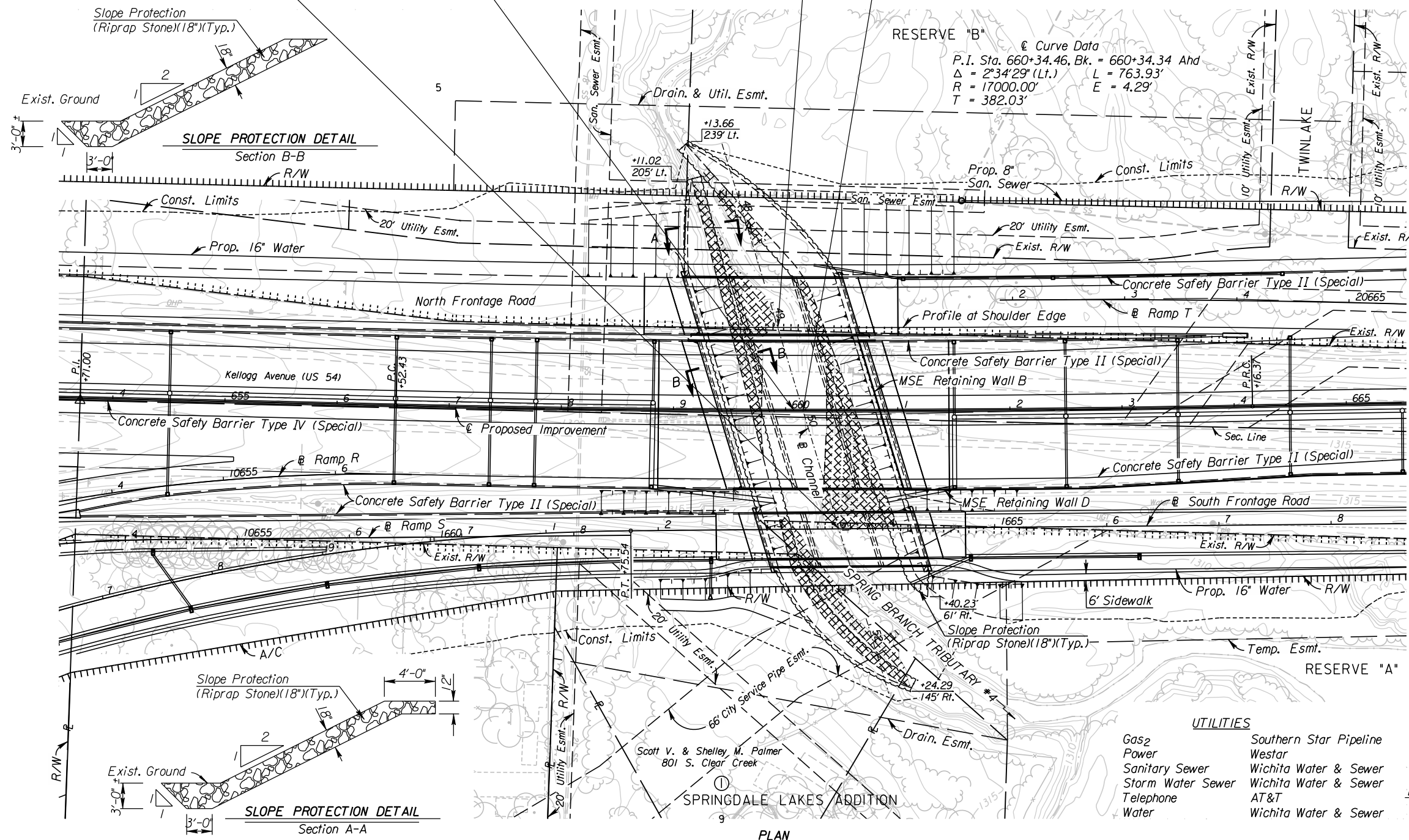
STATE	PROJECT NO.	YEAR	SHEET NO.	TOTAL SHEETS
KANSAS	472 84614	.	183	534

Sta. 1663+61.08 Construct
Br. No. (1)
42'-56'-42'
Reinforced Concrete Haunched Slab Spans;
Pile Bent Abutments and Column Bent Piers,
1-40' Roadway, 1-6' Sidewalk, 16'21'08" Skew Lt.

Sta. 660+07.05 Remove
Exist. Bridge
See notes this sheet

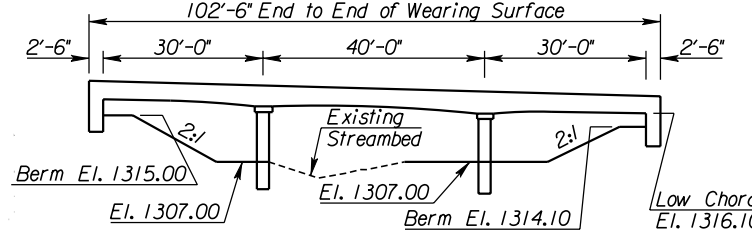
Sta. 659+92.76 74.00' Lt. Construct
Br. No. (1)
42'-56'-42'
Reinforced Concrete Haunched Slab Spans;
Pile Bent Abutments and Column Bent Piers,
1-50' Roadway, 17'04'36" Skew Lt.

Sta. 660+15.49 Construct
Br. No. (1)
46'-56'-46'
Continuous Prestressed Concrete Beam Spans;
Pile Bent Abutments and Column Bent Piers,
1-60' & 1-68' Roadways, 17" Skew Lt.



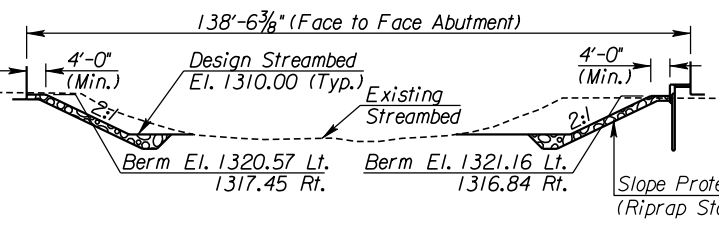
CHANNEL LAYOUT
(Stations/Offsets from ϵ Proposed Improvement)

REMOVAL OF EXISTING STRUCTURE
The Contractor shall remove the existing bridge (K.D.O.T. No. XXXX) consisting of 1-42' Roadway & 1-52' Roadway; Haunched Slab Bridges.
All material removed shall become the property of the Contractor and shall be removed from the project site by the Contractor. Remove all portions of the substructure (pilings, footings, etc.) at least 3' below the existing streambed.
All labor and work is included in the bid item "Removal of Existing Structures", Lump Sum.

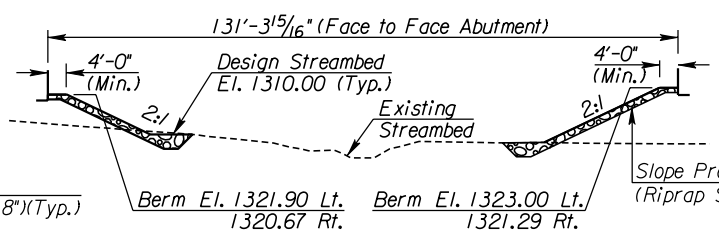


EXISTING EAST KELLOGG HAUNCH SLAB WATERWAY OPENING
(Looking Upstream) (Along Exist. Kellogg Ave.)
Waterway Opening = 690 Sq. Ft.

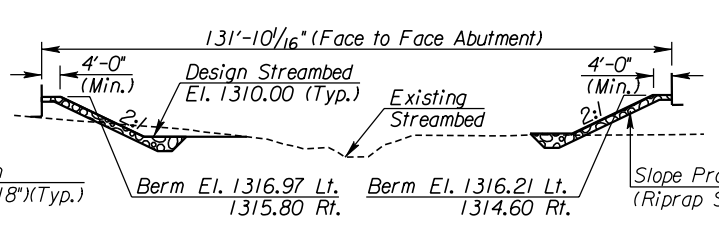
See Sh. No's. 102-130 for SWS Plans.
See Sh. No's. 136-139 for San. Sewer Plans.
See Sh. No's. 140-162 for Water Plans.



CHANNEL SECTION @ EAST KELLOGG BRIDGE
(Looking Upstream) (Normal to ϵ Channel)



CHANNEL SECTION @ NORTH FR. RD. BRIDGE
(Looking Upstream) (Normal to ϵ Channel)



CHANNEL SECTION @ SOUTH FR. RD. BRIDGE
(Looking Upstream) (Normal to ϵ Channel)

- UTILITIES**
- Gas₂
 - Power
 - Sanitary Sewer
 - Storm Water Sewer
 - Telephone
 - Water
 - Southern Star Pipeline
 - Westar
 - Wichita Water & Sewer
 - Wichita Water & Sewer
 - AT&T
 - Wichita Water & Sewer

10:48:33 AM
 2/9/2011
 T:\35766A\Cadd\Sheets\Structures\Bridges\SBT4\EK25BC.TM.dgn
 SURV. - PLOT CADD DES. - DR. - TR. - APP. - CKD.