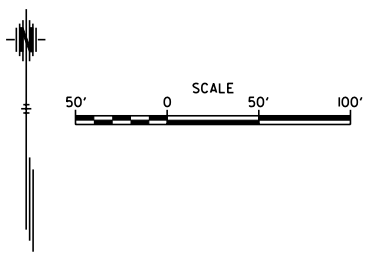
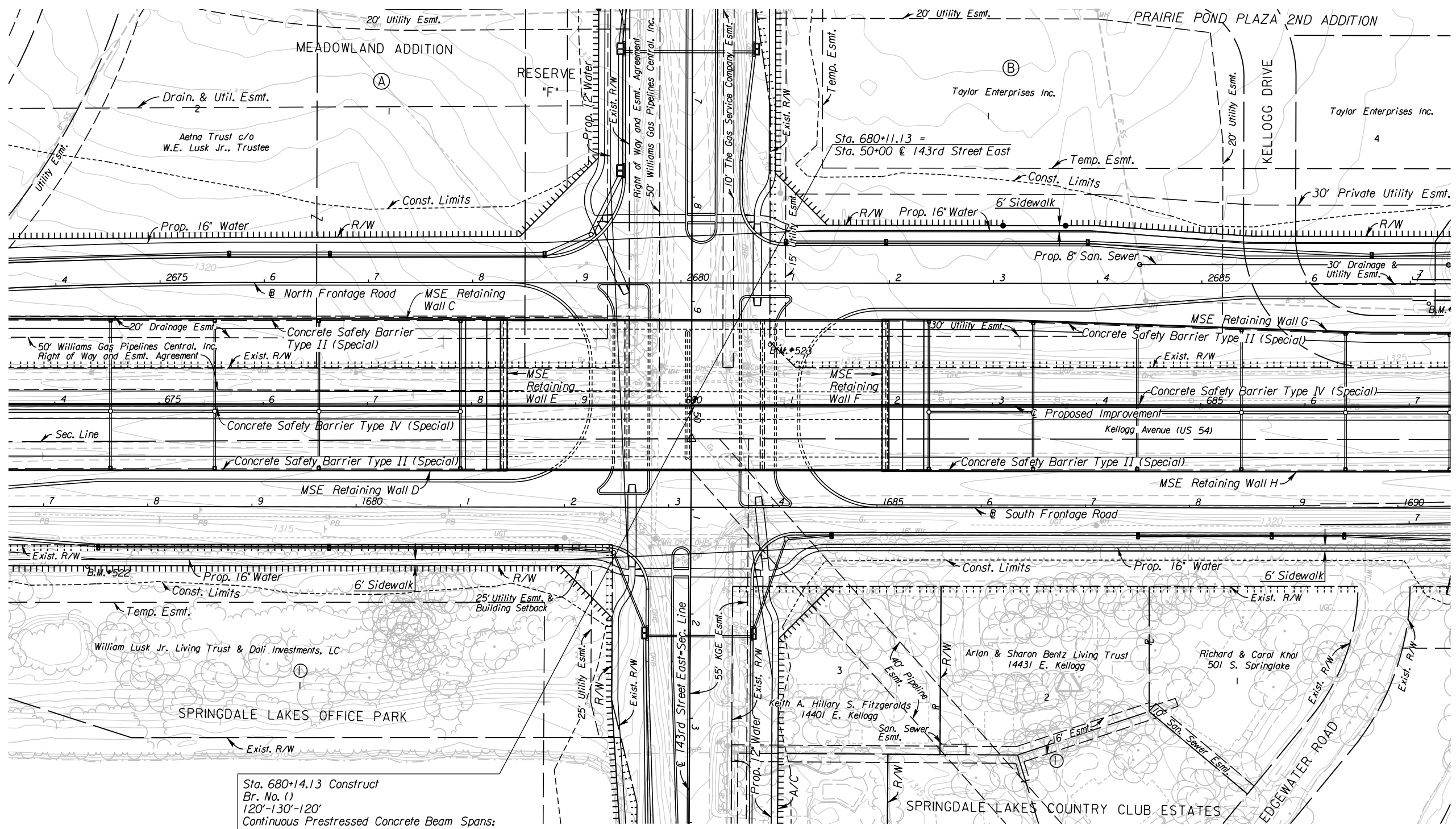


STATE	PROJECT NO.	YEAR	SHEET NO.	TOTAL SHEETS
KANSAS	472 84614	.	190	534



Sta. 680+14.13 Construct
 Br. No. (1)
 120'-130'-120'
 Continuous Prestressed Concrete Beam Spans;
 Pile Bent Abutments and Column Bent Piers,
 1-80' & 1-60' Roadways, 0° Skew

PLAN

UTILITIES

- | | |
|-------------------|------------------------|
| Cable | Cox Communications |
| Gas ₁ | Kansas Gas Service |
| Gas ₂ | Southern Star Pipeline |
| Gas ₅ | Coffeyville Resources |
| Power | Westar |
| Sanitary Sewer | Wichita Water & Sewer |
| Storm Water Sewer | Wichita Water & Sewer |
| Telephone | AT&T |
| Traffic Signal | City of Wichita |
| Water | Wichita Water & Sewer |

See Sh. No's. 102-130 for SWS Plans.
 See Sh. No's. 136-139 for San. Sewer Plans.
 See Sh. No's. 140-162 for Water Plans.

CITY OF WICHITA
 EAST KELLOGG OVER 143RD STREET EAST
 CONTOUR MAP
 BR. NO. STA. 680+14.13

10:49:51 AM
 2/9/2011
 T:\35766A\Cadd\Sheets\Structures\Bridges\43\EK243CTM.dgn
 SURV. - PLOT CADD DES. - DR. - TR. - CKD. - APP.