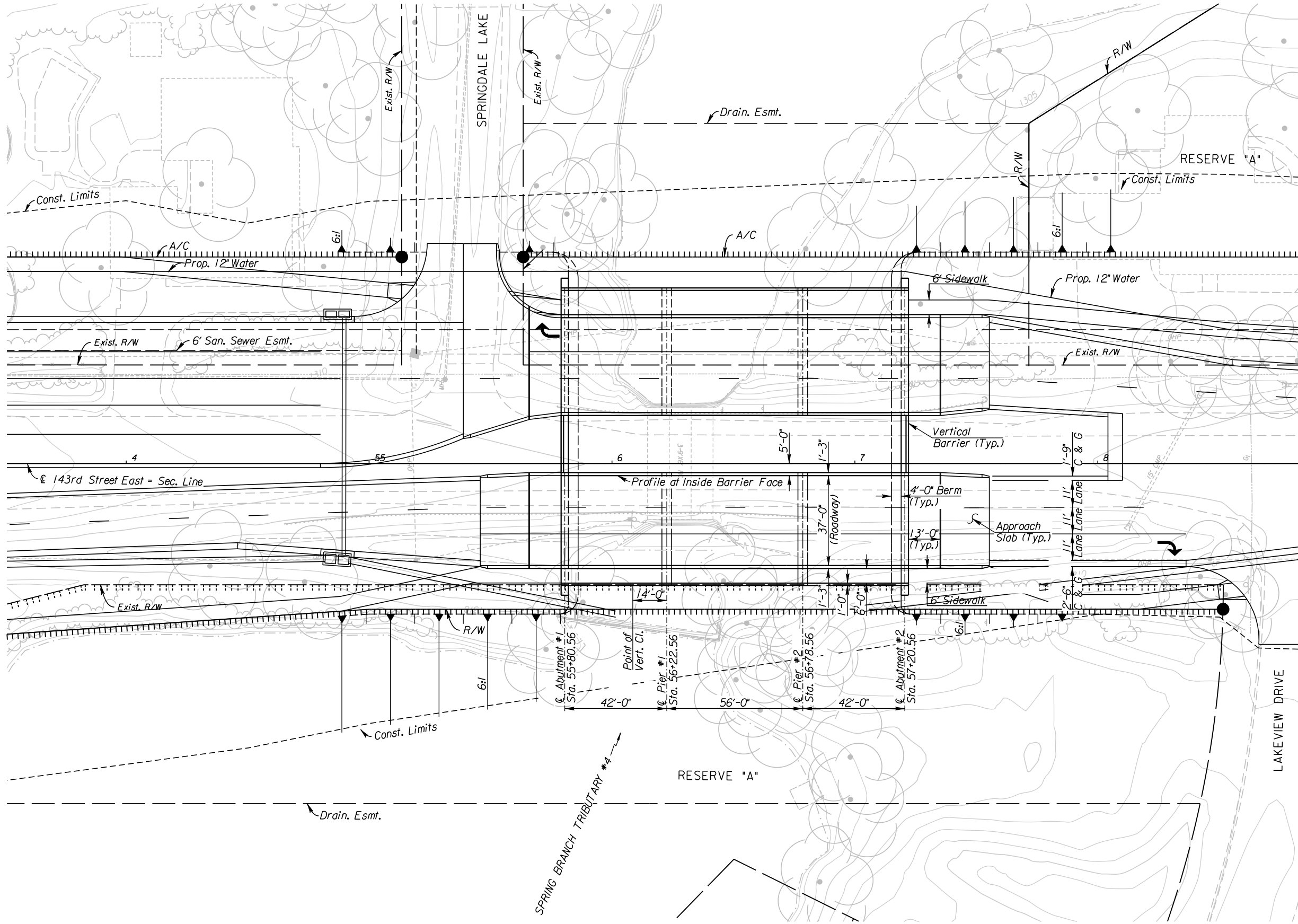
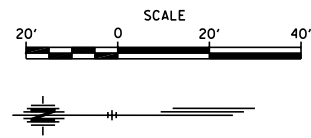


STATE	PROJECT NO.	YEAR	SHEET NO.	TOTAL SHEETS
KANSAS	472 84614	.	210	534



DRAINAGE DATA

* Drainage Area	3.3 Sq. Mi.
Design Frequency	50 Years
** Design Discharge (Q ₁₀₀)	3,060 cfs
Design High Water Elevation	1308.18 Ft.
Design Backwater	-2.63 Ft.
Design Backwater Elevation	1308.78 Ft.
Overtopping Elevation (Sta. N/A)	N/A Ft.
Overtopping Discharge	N/A cfs
Overtopping Frequency	>500 Years
** Discharge at Q ₁₀₀	3,813 cfs
Backwater at Q ₁₀₀	-2.39 Ft.
Backwater Elevation at Q ₁₀₀	1308.71 Ft.
Historic High Water Elevation	1306.30 Ft.
Ordinary High Water Elevation	1306 Ft.
Total Waterway Provided	568 Sq. Ft.
Design Waterway Provided	418 Sq. Ft.
100 Yr. Floodplain Elev. (FEMA)	
Average Velocity at Q _{des}	5.9 fps
Average Velocity at Q ₁₀₀	6.8 fps
* Drainage Area for Spring Branch Tributary #4	
** Discharge is controlled and published by FEMA	

CITY OF WICHITA
 SB 143RD STREET EAST OVER
 SPRING BRANCH TRIBUTARY #4
 CONSTRUCTION LAYOUT I

BR. NO. STA. 56+50.56

11/26/01 AM
 2/21/2011
 T:\357666\Cadd\Sheets\Structures\Bridges\143S\SB\EK2435BCL101.dgn
 SURV. - PLOT CADD DES. - DR. - TR. - APP.

PLAN