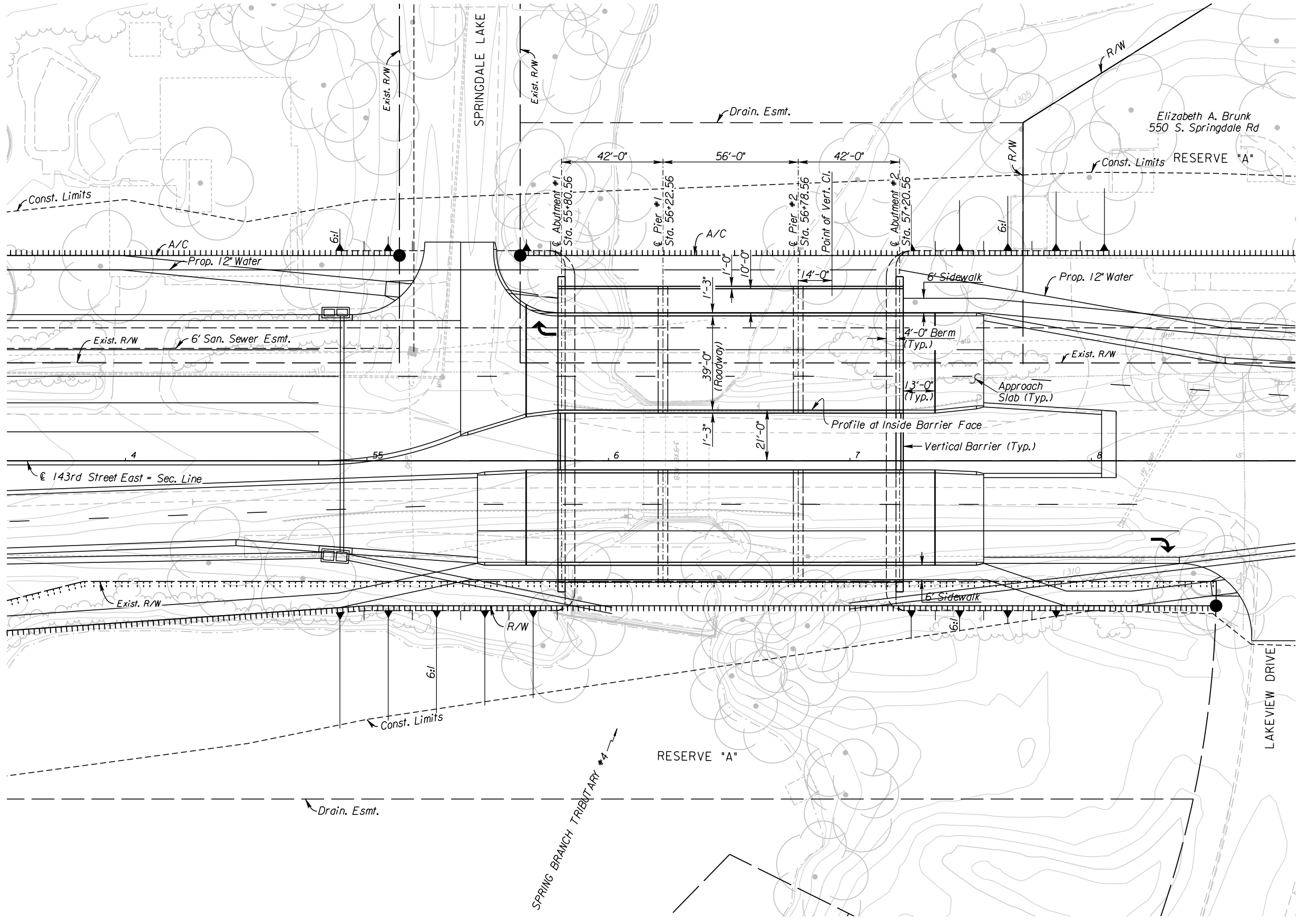
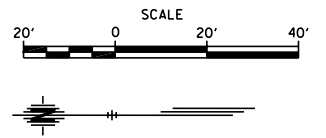


| | | | | |
|--------|-------------|------|-----------|--------------|
| STATE | PROJECT NO. | YEAR | SHEET NO. | TOTAL SHEETS |
| KANSAS | 472 84614 | . | 212 | 534 |



DRAINAGE DATA

| | |
|--|-------------|
| * Drainage Area | 3.3 Sq. Mi. |
| Design Frequency | 50 Years |
| ** Design Discharge (Q_{100}) | 3,060 cfs |
| Design High Water Elevation | 1308.18 Ft. |
| Design Backwater | -2.63 Ft. |
| Design Backwater Elevation | 1308.78 Ft. |
| | |
| Overtopping Elevation (Sta. N/A) | N/A Ft. |
| Overtopping Discharge | N/A cfs |
| Overtopping Frequency | >500 Years |
| | |
| ** Discharge at Q_{100} | 3,813 cfs |
| Backwater at Q_{100} | -2.39 Ft. |
| Backwater Elevation at Q_{100} | 1308.71 Ft. |
| | |
| Historic High Water Elevation | 1306.30 Ft. |
| Ordinary High Water Elevation | 1306 Ft. |
| Total Waterway Provided | 568 Sq. Ft. |
| Design Waterway Provided | 418 Sq. Ft. |
| | |
| 100 Yr. Floodplain Elev. (FEMA) | |
| Average Velocity at Q_{des} | 5.9 fps |
| Average Velocity at Q_{100} | 6.8 fps |
| | |
| * Drainage Area for Spring Branch Tributary #4 | |
| ** Discharge is controlled and published by FEMA | |

CITY OF WICHITA
 NB 143RD STREET OVER
 SPRING BRANCH TRIBUTARY #4
 CONSTRUCTION LAYOUT I

BR. NO. STA. 56+50.56

1/17/2011 2:21/2011
 T:\35766A\Cadd\Sheets\Structures\Bridges\143S\NB\EK243\NBCL101.dgn
 SURV. - PLOT CADD DES. - DR. - TR. - APP.

PLAN