

STATE	PROJECT NO.	YEAR	SHEET NO.	TOTAL SHEETS
KANSAS	472 84614	.	14	534

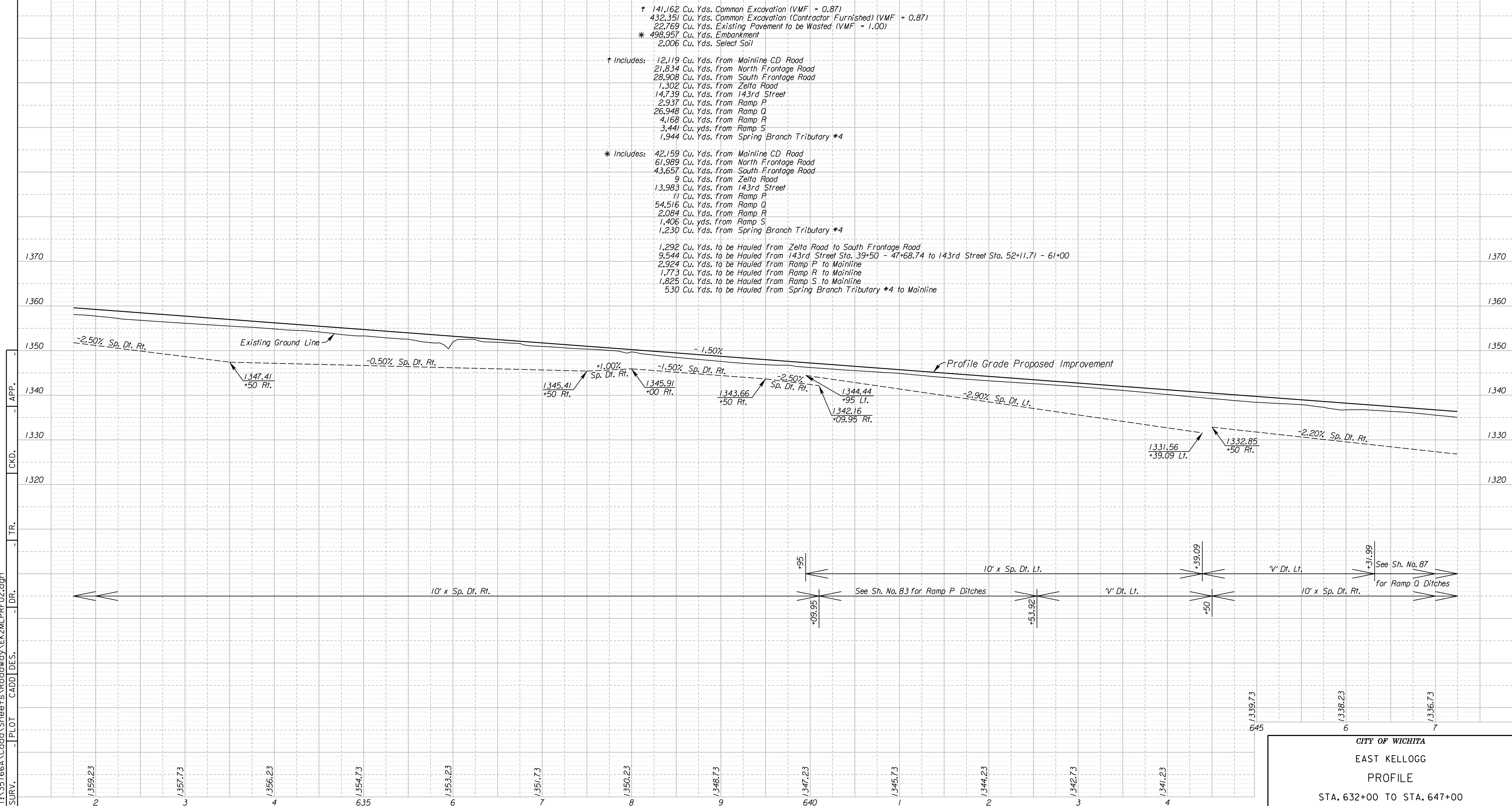
From Balance Sta. 631+00 BALANCE NO. 1 - STA. 631+00 to STA. 704+17.26 To Balance Sta. 704+17.26

- † 141,162 Cu. Yds. Common Excavation (VMF = 0.87)
- 432,351 Cu. Yds. Common Excavation (Contractor Furnished) (VMF = 0.87)
- 22,769 Cu. Yds. Existing Pavement to be Wasted (VMF = 1.00)
- \* 498,957 Cu. Yds. Embankment
- 2,006 Cu. Yds. Select Soil

- † Includes: 12,119 Cu. Yds. from Mainline CD Road
- 21,834 Cu. Yds. from North Frontage Road
- 28,908 Cu. Yds. from South Frontage Road
- 1,302 Cu. Yds. from Zelta Road
- 14,739 Cu. Yds. from 143rd Street
- 2,937 Cu. Yds. from Ramp P
- 26,948 Cu. Yds. from Ramp Q
- 4,168 Cu. Yds. from Ramp R
- 3,441 Cu. Yds. from Ramp S
- 1,944 Cu. Yds. from Spring Branch Tributary \*4

- \* Includes: 42,159 Cu. Yds. from Mainline CD Road
- 61,989 Cu. Yds. from North Frontage Road
- 43,657 Cu. Yds. from South Frontage Road
- 9 Cu. Yds. from Zelta Road
- 13,983 Cu. Yds. from 143rd Street
- 11 Cu. Yds. from Ramp P
- 54,516 Cu. Yds. from Ramp Q
- 2,084 Cu. Yds. from Ramp R
- 1,406 Cu. Yds. from Ramp S
- 1,230 Cu. Yds. from Spring Branch Tributary \*4

- 1,292 Cu. Yds. to be Hauled from Zelta Road to South Frontage Road
- 9,544 Cu. Yds. to be Hauled from 143rd Street Sta. 39+50 - 47+68.74 to 143rd Street Sta. 52+11.71 - 61+00
- 2,924 Cu. Yds. to be Hauled from Ramp P to Mainline
- 1,773 Cu. Yds. to be Hauled from Ramp R to Mainline
- 1,825 Cu. Yds. to be Hauled from Ramp S to Mainline
- 530 Cu. Yds. to be Hauled from Spring Branch Tributary \*4 to Mainline



11:20 PM  
 2/22/2011  
 T:\35166A\Cadd\Sheets\Roadway\EK2ML\_PRF02.dgn  
 SURV. PLOT CADD DES. DR. TR. CKD. APP.

**CITY OF WICHITA**  
**EAST KELLOGG**  
**PROFILE**  
**STA. 632+00 TO STA. 647+00**