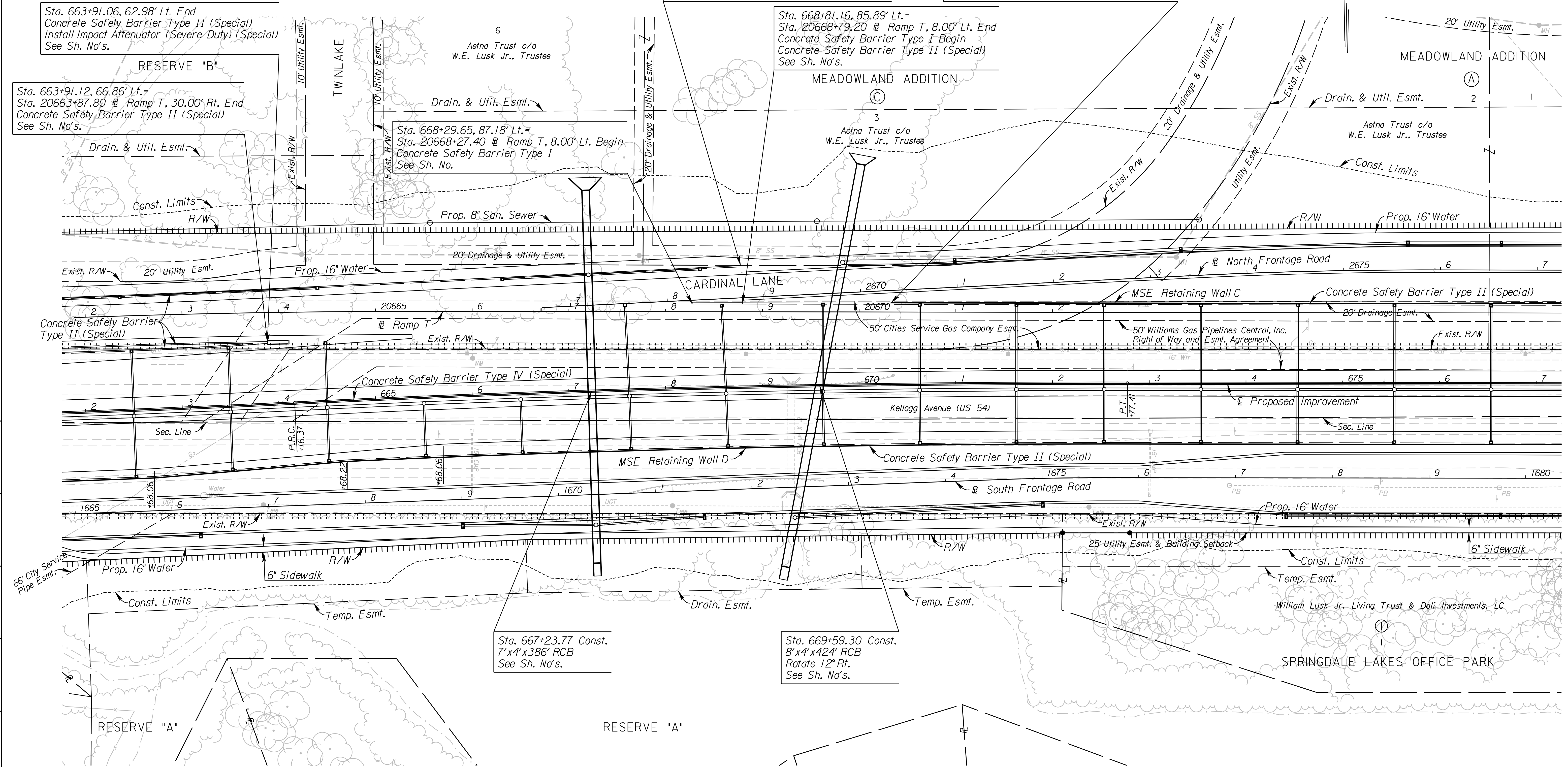


STATE	PROJECT NO.	YEAR	SHEET NO.	TOTAL SHEETS
KANSAS	472 84614	:	17	534



Sta. 668+80.32, 124.38' Lt. =
Sta. 20668+77.45 @ Ramp T, 46.46' Lt. End
Concrete Safety Barrier Type II (Special)
See Sh. No's.

Sta. 670+34.04, 84.29' Lt. =
Sta. 20670+32.84 @ Ramp T, 9.29' Lt. Begin
MSE Retaining Wall C
See Sh. No. 168

Sta. 663+91.06, 62.98' Lt. End
Concrete Safety Barrier Type II (Special)
Install Impact Attenuator (Severe Duty) (Special)
See Sh. No's.

Sta. 663+91.12, 66.86' Lt. =
Sta. 20663+87.80 @ Ramp T, 30.00' Rt. End
Concrete Safety Barrier Type II (Special)
See Sh. No's.

Sta. 668+29.65, 87.18' Lt. =
Sta. 20668+27.40 @ Ramp T, 8.00' Lt. Begin
Concrete Safety Barrier Type I
See Sh. No.

Sta. 668+81.16, 85.89' Lt. =
Sta. 20668+79.20 @ Ramp T, 8.00' Lt. End
Concrete Safety Barrier Type I Begin
Concrete Safety Barrier Type II (Special)
See Sh. No's.

Sta. 667+23.77 Const.
7'x4'x386' RCB
See Sh. No's.

Sta. 669+59.30 Const.
8'x4'x424' RCB
Rotate 12° Rt.
See Sh. No's.

- UTILITIES**
- Gas2
 - Gas5
 - Power
 - Sanitary Sewer
 - Storm Water Sewer
 - Telephone
 - Traffic Signal
 - Water
 - Southern Star Pipeline
 - Coffeyville Resources
 - Westar
 - Wichita Water & Sewer
 - Wichita Water & Sewer
 - AT&T
 - City of Wichita
 - Wichita Water & Sewer

See Sh. No's. 102-130 for SWS Plans.
See Sh. No's. 136-139 for San. Sewer Plans.
See Sh. No's. 140-162 for Water Plans.

CITY OF WICHITA
EAST KELLOGG
PLAN
STA. 662+00 TO STA. 677+00

11:24:47 AM
2/9/2011
T:\35766A\Cadd\Sheets\Roadway\EK2ML\PLN04.dgn
SURV. PLOT CADD DES. TR. CKD. APP.