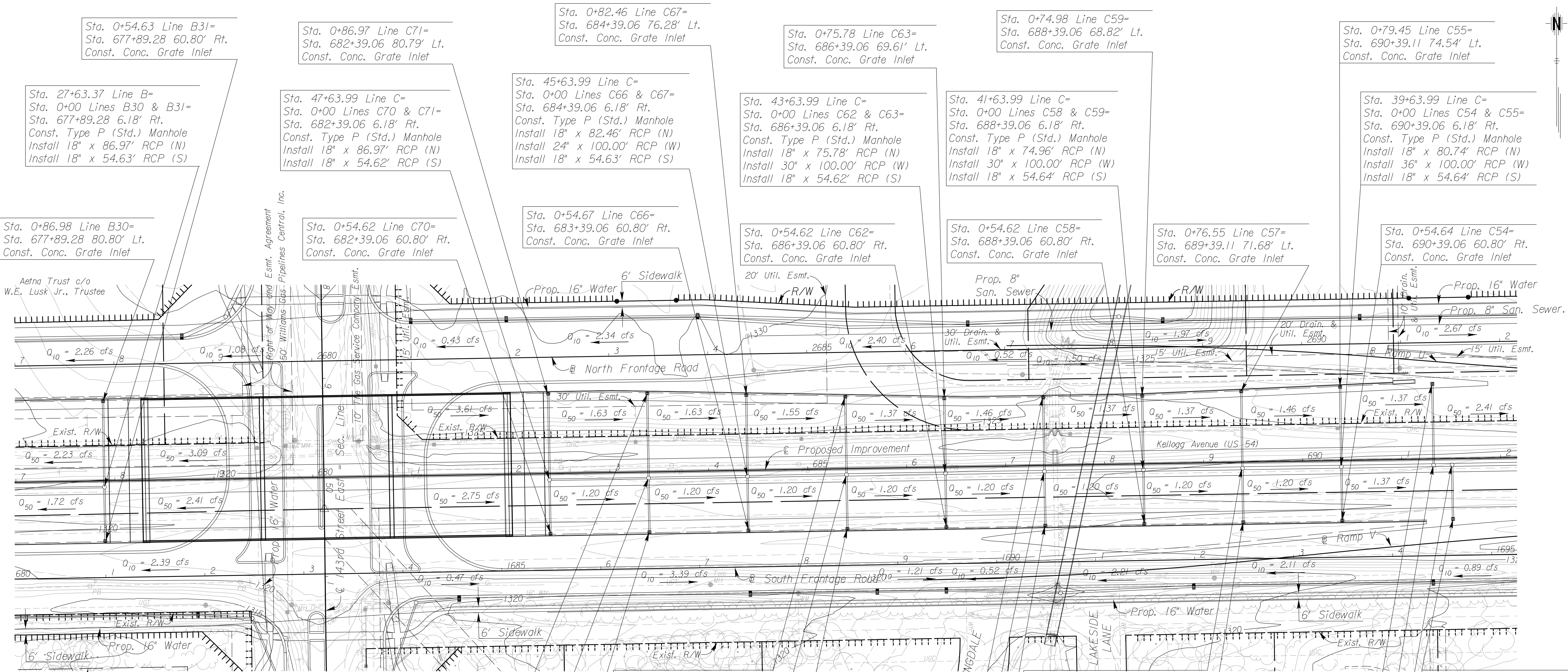


STATE	PROJECT NO.	YEAR	SHEET NO.	TOTAL SHEETS
KANSAS	472 84614	.	105	534



Sta. 0+54.63 Line B31=  
Sta. 677+89.28 60.80' Rt.  
Const. Conc. Grate Inlet

Sta. 0+86.97 Line C71=  
Sta. 682+39.06 80.79' Lt.  
Const. Conc. Grate Inlet

Sta. 0+82.46 Line C67=  
Sta. 684+39.06 76.28' Lt.  
Const. Conc. Grate Inlet

Sta. 0+75.78 Line C63=  
Sta. 686+39.06 69.61' Lt.  
Const. Conc. Grate Inlet

Sta. 0+74.98 Line C59=  
Sta. 688+39.06 68.82' Lt.  
Const. Conc. Grate Inlet

Sta. 0+79.45 Line C55=  
Sta. 690+39.11 74.54' Lt.  
Const. Conc. Grate Inlet

Sta. 27+63.37 Line B=  
Sta. 0+00 Lines B30 & B31=  
Sta. 677+89.28 6.18' Rt.  
Const. Type P (Std.) Manhole  
Install 18" x 86.97' RCP (N)  
Install 18" x 54.63' RCP (S)

Sta. 47+63.99 Line C=  
Sta. 0+00 Lines C70 & C71=  
Sta. 682+39.06 6.18' Rt.  
Const. Type P (Std.) Manhole  
Install 18" x 86.97' RCP (N)  
Install 18" x 54.62' RCP (S)

Sta. 45+63.99 Line C=  
Sta. 0+00 Lines C66 & C67=  
Sta. 684+39.06 6.18' Rt.  
Const. Type P (Std.) Manhole  
Install 18" x 82.46' RCP (N)  
Install 24" x 100.00' RCP (W)  
Install 18" x 54.63' RCP (S)

Sta. 43+63.99 Line C=  
Sta. 0+00 Lines C62 & C63=  
Sta. 686+39.06 6.18' Rt.  
Const. Type P (Std.) Manhole  
Install 18" x 75.78' RCP (N)  
Install 30" x 100.00' RCP (W)  
Install 18" x 54.62' RCP (S)

Sta. 41+63.99 Line C=  
Sta. 0+00 Lines C58 & C59=  
Sta. 688+39.06 6.18' Rt.  
Const. Type P (Std.) Manhole  
Install 18" x 74.96' RCP (N)  
Install 30" x 100.00' RCP (W)  
Install 18" x 54.64' RCP (S)

Sta. 39+63.99 Line C=  
Sta. 0+00 Lines C54 & C55=  
Sta. 690+39.06 6.18' Rt.  
Const. Type P (Std.) Manhole  
Install 18" x 80.74' RCP (N)  
Install 36" x 100.00' RCP (W)  
Install 18" x 54.64' RCP (S)

Sta. 0+86.98 Line B30=  
Sta. 677+89.28 80.80' Lt.  
Const. Conc. Grate Inlet

Sta. 0+54.62 Line C70=  
Sta. 682+39.06 60.80' Rt.  
Const. Conc. Grate Inlet

Sta. 0+54.67 Line C66=  
Sta. 683+39.06 60.80' Rt.  
Const. Conc. Grate Inlet

Sta. 0+54.62 Line C62=  
Sta. 686+39.06 60.80' Rt.  
Const. Conc. Grate Inlet

Sta. 0+54.62 Line C58=  
Sta. 688+39.06 60.80' Rt.  
Const. Conc. Grate Inlet

Sta. 0+76.55 Line C57=  
Sta. 689+39.11 71.68' Lt.  
Const. Conc. Grate Inlet

Sta. 0+54.64 Line C54=  
Sta. 689+39.06 60.80' Rt.  
Const. Conc. Grate Inlet

Sta. 0+85.80 Line C69=  
Sta. 683+39.06 79.62' Lt.  
Const. Conc. Grate Inlet

Sta. 0+79.12 Line C65=  
Sta. 685+39.06 72.95' Lt.  
Const. Conc. Grate Inlet

Sta. 0+74.78 Line C61=  
Sta. 687+39.06 68.81' Lt.  
Const. Conc. Grate Inlet

Sta. 40+63.99 Line C=  
Sta. 0+00 Lines C56 & C57=  
Sta. 689+39.06 6.18' Rt.  
Const. Type P (Std.) Manhole  
Install 18" x 77.84' RCP (N)  
Install 36" x 100.00' RCP (W)  
Install 18" x 54.64' RCP (S)

Sta. 0+82.11 Line C53=  
Sta. 691+32.26 75.90' Lt.  
Const. Conc. Grate Inlet

Sta. 0+54.62 Line C52=  
Sta. 691+50.94 60.80' Rt.  
Const. Conc. Grate Inlet

Sta. 46+63.99 Line C=  
Sta. 0+00 Lines C68 & C69=  
Sta. 683+39.06 6.18' Rt.  
Const. Type P (Std.) Manhole  
Install 18" x 85.80' RCP (N)  
Install 18" x 100.00' RCP (W)  
Install 18" x 54.62' RCP (S)

Sta. 44+63.99 Line C=  
Sta. 0+00 Lines C64 & C65=  
Sta. 685+39.06 6.18' Rt.  
Const. Type P (Std.) Manhole  
Install 18" x 79.12' RCP (N)  
Install 24" x 100.00' RCP (W)  
Install 18" x 54.63' RCP (S)

Sta. 42+63.99 Line C=  
Sta. 0+00 Lines C60 & C61=  
Sta. 687+39.06 6.18' Rt.  
Const. Type P (Std.) Manhole  
Install 18" x 74.97' RCP (N)  
Install 30" x 100.00' RCP (W)  
Install 18" x 54.64' RCP (S)

Sta. 0+54.62 Line C56=  
Sta. 689+39.06 60.80' Rt.  
Const. Conc. Grate Inlet

Sta. 38+70.79 Line C=  
Sta. 0+00 Line C53=  
Sta. 691+32.26 6.18' Rt.  
Const. Type P (Std.) Manhole  
Install 36" x 93.19' RCP (W)  
Install 18" x 82.11' RCP (N)

Sta. 38+52.11 Line C=  
Sta. 0+00 Line C52=  
Sta. 691+50.94 6.18' Rt.  
Const. Type P (Std.) Manhole  
Install 36" x 18.68' RCP (W)  
Install 18" x 54.60' RCP (S)

Sta. 0+54.62 Line C68=  
Sta. 683+39.06 60.80' Rt.  
Const. Conc. Grate Inlet

Sta. 0+54.67 Line C64=  
Sta. 685+39.06 60.80' Rt.  
Const. Conc. Grate Inlet

Sta. 0+54.62, Line C60=  
Sta. 687+39.06, 60.80' Rt.  
Const. Conc. Grate Inlet

**UTILITIES**

- Cable Cox Communications
- Gas<sub>1</sub> Kansas Gas Service
- Gas<sub>2</sub> Southern Star Pipeline
- Gas<sub>5</sub> Coffeyville Resources
- Power Westar
- Sanitary Sewer Wichita Water & Sewer
- Storm Water Sewer Wichita Water & Sewer
- Telephone AT&T
- Traffic Signal City of Wichita
- Water Wichita Water & Sewer

$Q_{50} = x.xx$  cfs - DESIGN YEAR FLOW PER INLET  
See Sh. No's. 19-20 for Crossroad Structure  
See Sh. No's. 136-139 for San. Sewer Plans.  
See Sh. No's. 140-162 for Water Plans.

**CITY OF WICHITA**  
**EAST KELLOGG**  
**STORM WATER SEWER PLAN**  
**STA. 677+00 TO STA. 692+00**

2:41 PM  
 2/18/2011  
 J:\CIVIL\07432\DWG\SWS\EK2ML\_Plan\EK2ML\_SWP\05.DWG  
 SURV. - PLOT CADD DES. - TR. - CKD. - APP.